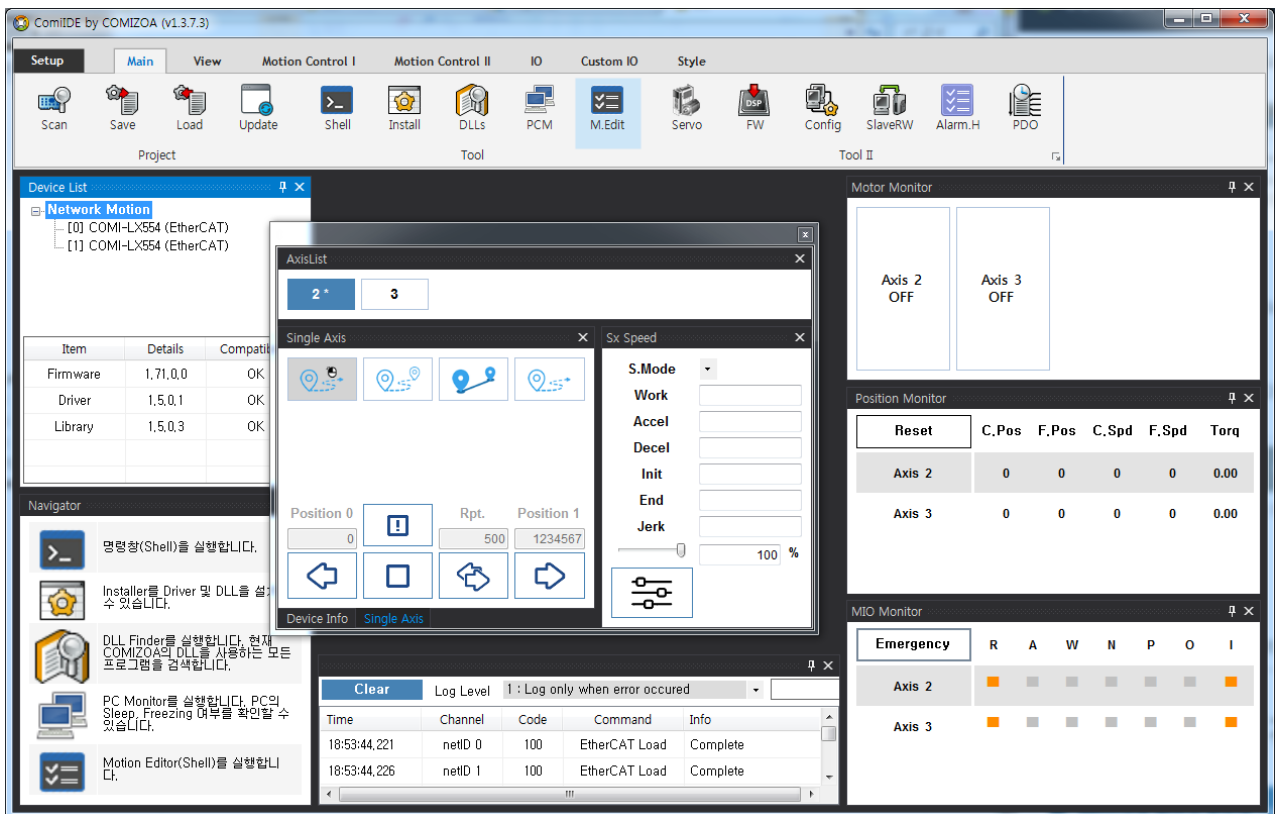


**Test - Motion** ..... 1  
..... 1  
..... 2  
Servo On ..... 3  
Motor State ..... 3  
..... 4  
..... 5  
..... 7  
..... 9  
..... 11

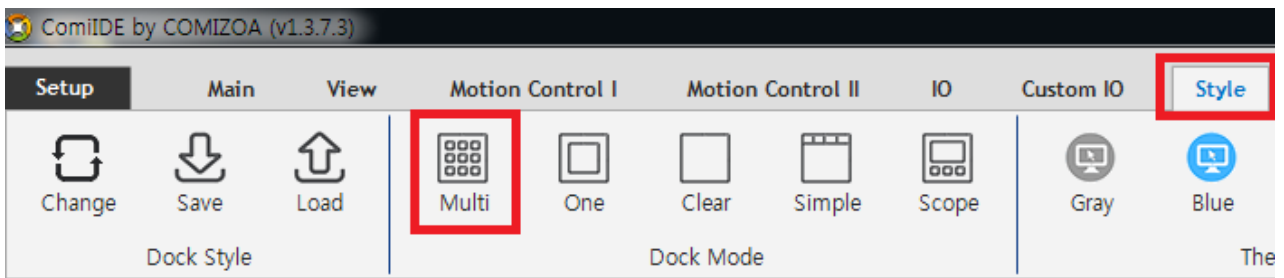
# Test - Motion

× ComiIDE

- ComiIDE



- , Style - Multi



Device List
⌵ ×

[-] **Network Motion**

- [0] COMI-LX554 (EtherCAT)
- [1] COMI-LX554 (EtherCAT)

Item	Details	Compatibility
Firmware	1,71,0,0	OK
Driver	1,5,0,1	OK
Library	1,5,0,3	OK

- DeviceList , Load .
- Device가 , .

Clear
Log Level
1 : Log only when error occurred
▼

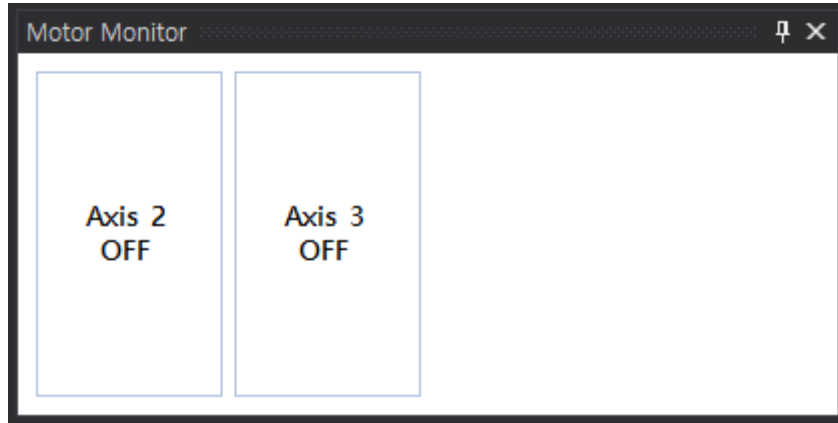
Find

Time	Channel	Code	Command	Info
23:21:32,750	netID 0	100	EtherCAT Load	Complete
23:21:32,773	netID 1	100	EtherCAT Load	Complete

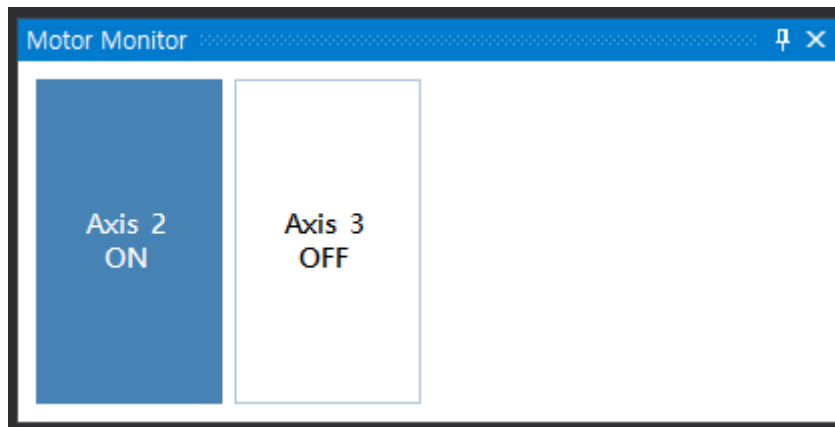
- LogView Load 가 .
- LogView Log View .

### Servo On

- Motor Monitor 가



- Servo\_On



- Motor Monitor Motor ServoOn Stop
- Motor Monitor **Motor Monitor**

### Motor State

- Motor가

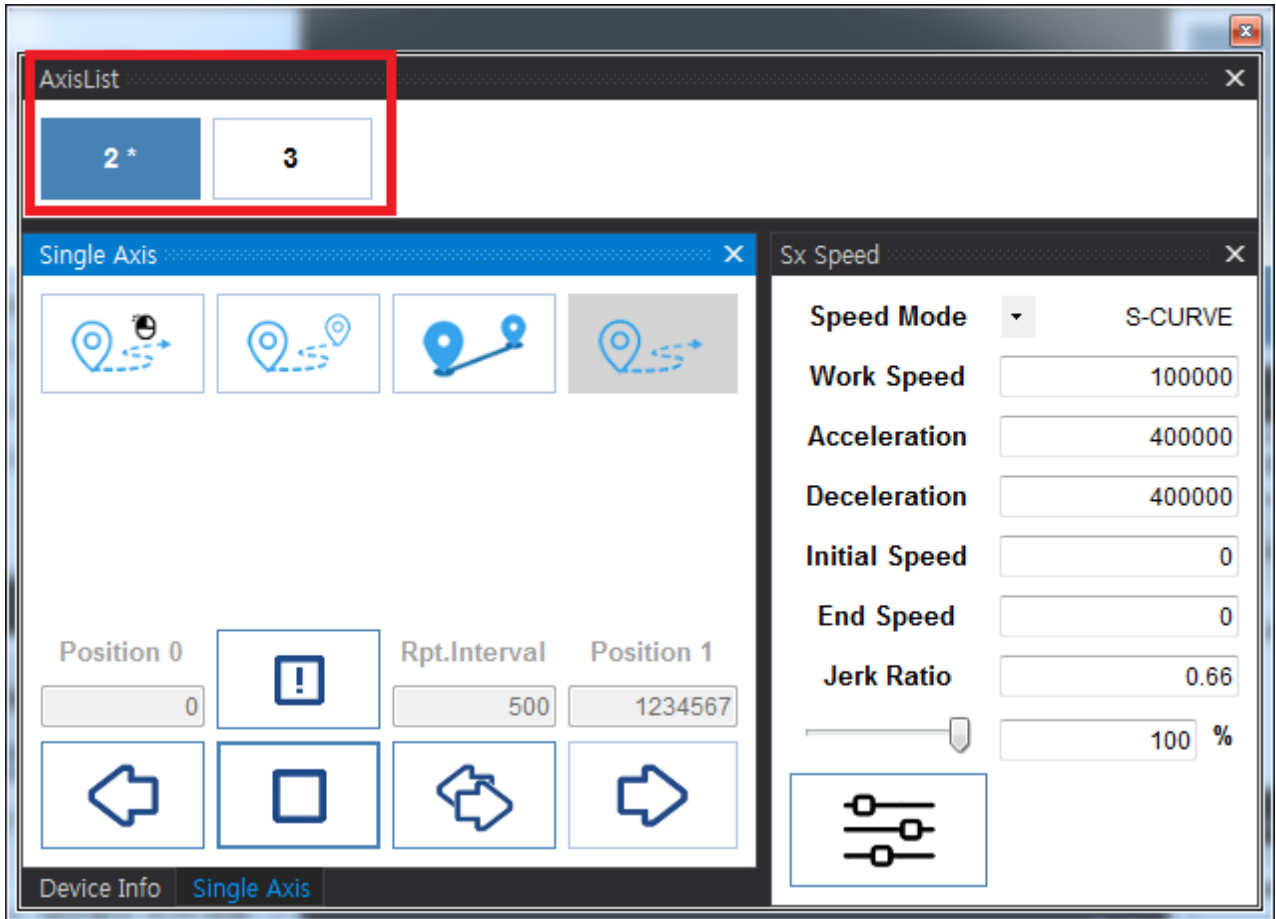


- Motor 가 Alarm , 가
- , Servo-On .
- MIO Monitor Motor가 가 .

MIO Monitor							
Emergency	RDY	ALM	WARN	NEL	PEL	ORG	INP
Axis 2	Orange	Grey	Grey	Grey	Grey	Grey	Orange
Axis 3	Orange	Grey	Grey	Grey	Grey	Grey	Orange

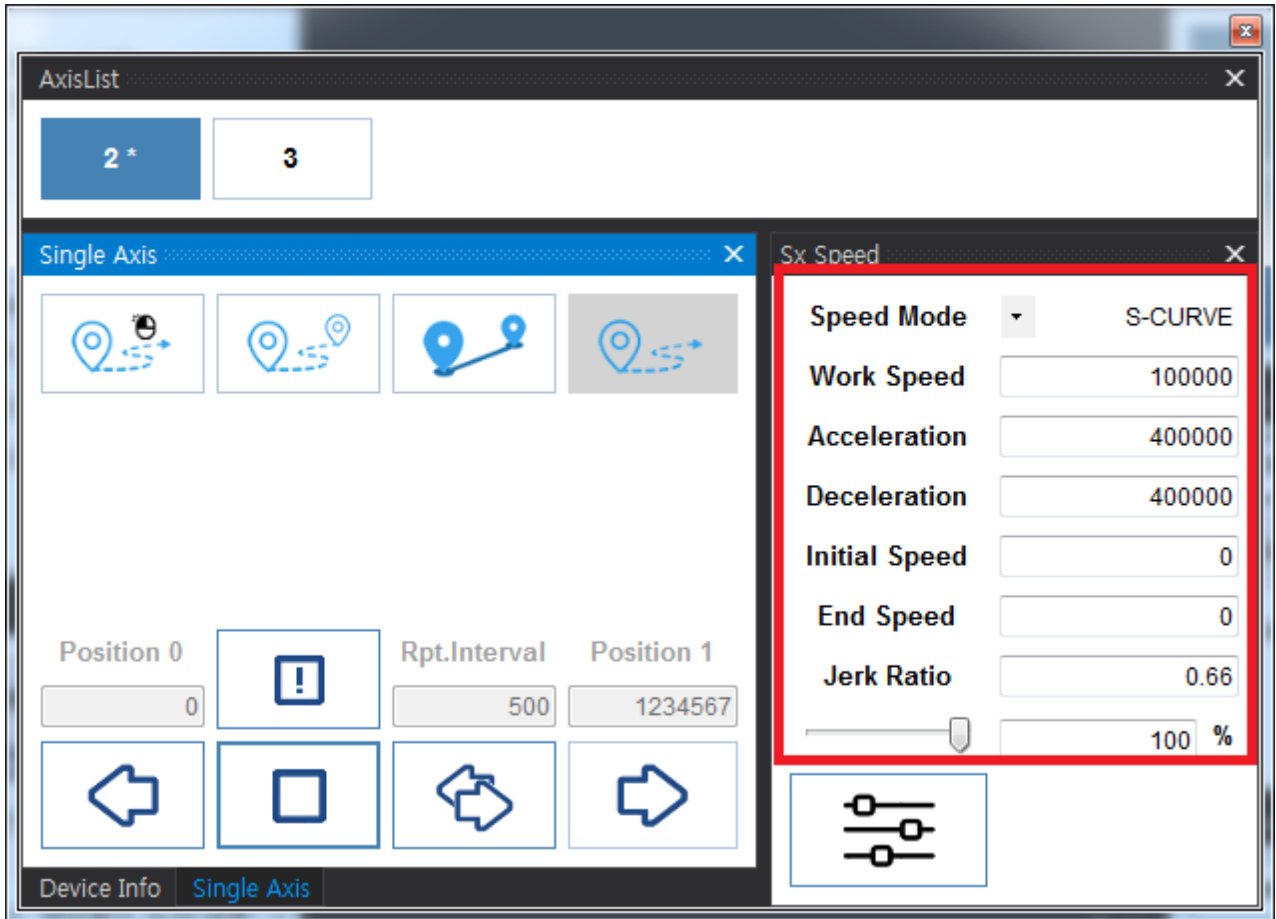
- , Alarm , PEL (Limit+) / NEL(Limit-) 가
- Ready , RDY 가 .
- MIO Monitor **MIO Monitor** .

- AxisList .

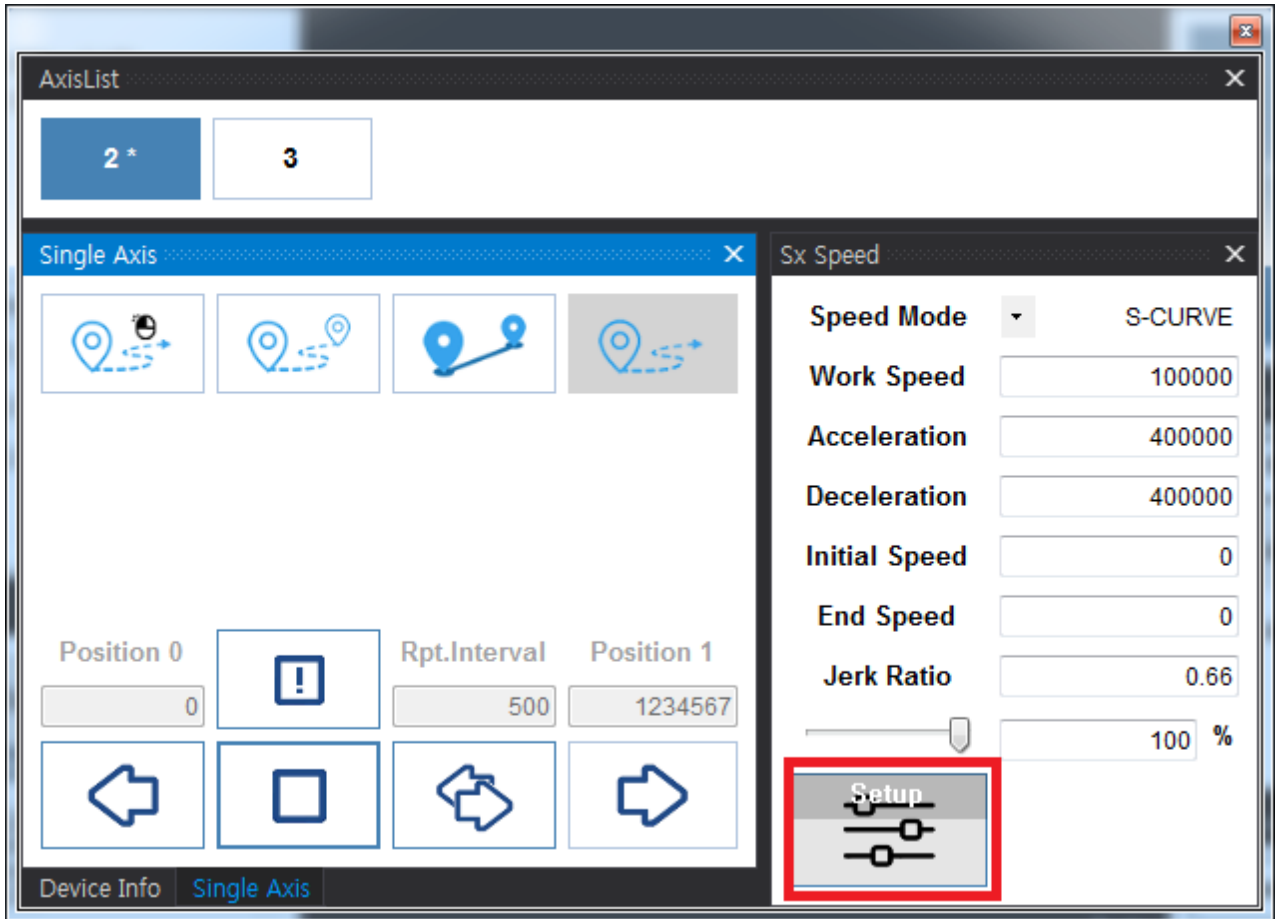


- AxisList

**AxisList**

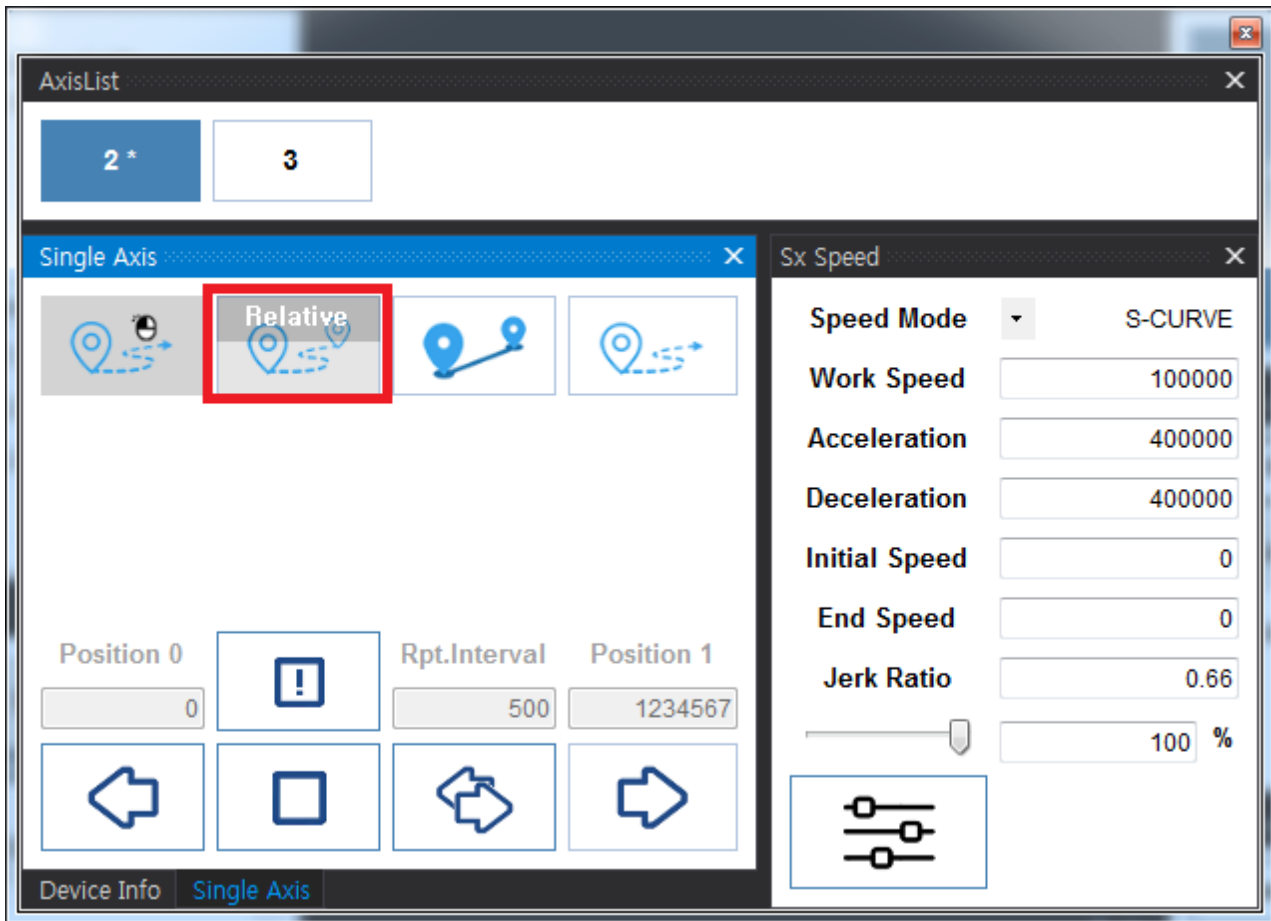


- 가 ,

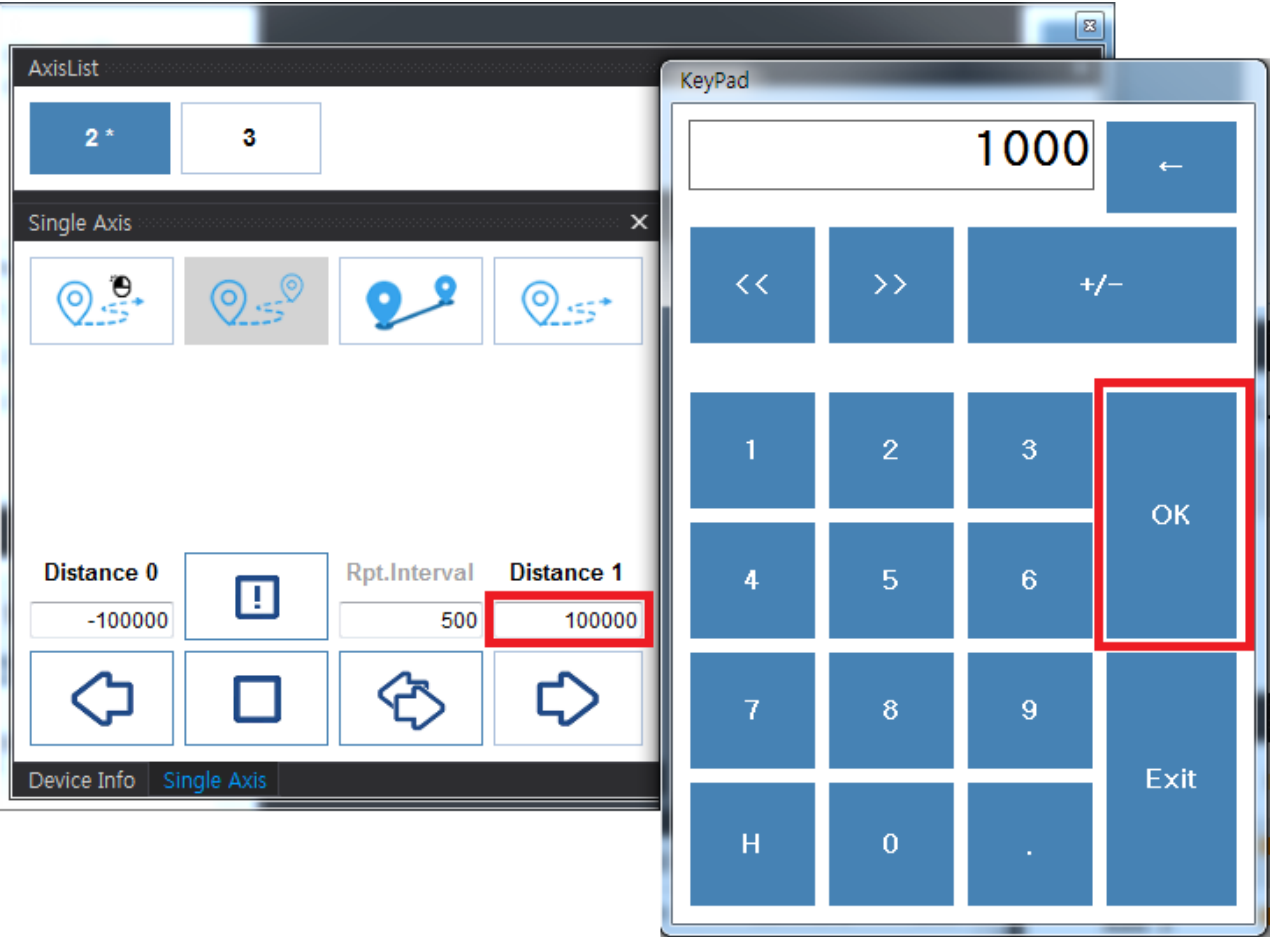


- Setup 가
- **SetSpeed\_Sx**
- KeyPad **KeyPad**

- <sup>1)</sup> RelativeMove-Mode



- Distance



- Move

- **SingleAxis**



## Trouble Shooting

- [EtherCAT TroubleShooting](#)
- [PCI\\_Pulse TroubleShooting](#)
- [NEMO TroubleShooting](#)

1)

2)

From:

<http://comizoa.com/info/> - -

Permanent link:

[http://comizoa.com/info/doku.php?id=application:comiide:25\\_begin:10\\_test\\_motion&rev=1559126742](http://comizoa.com/info/doku.php?id=application:comiide:25_begin:10_test_motion&rev=1559126742)

Last update: **2024/07/08 18:23**