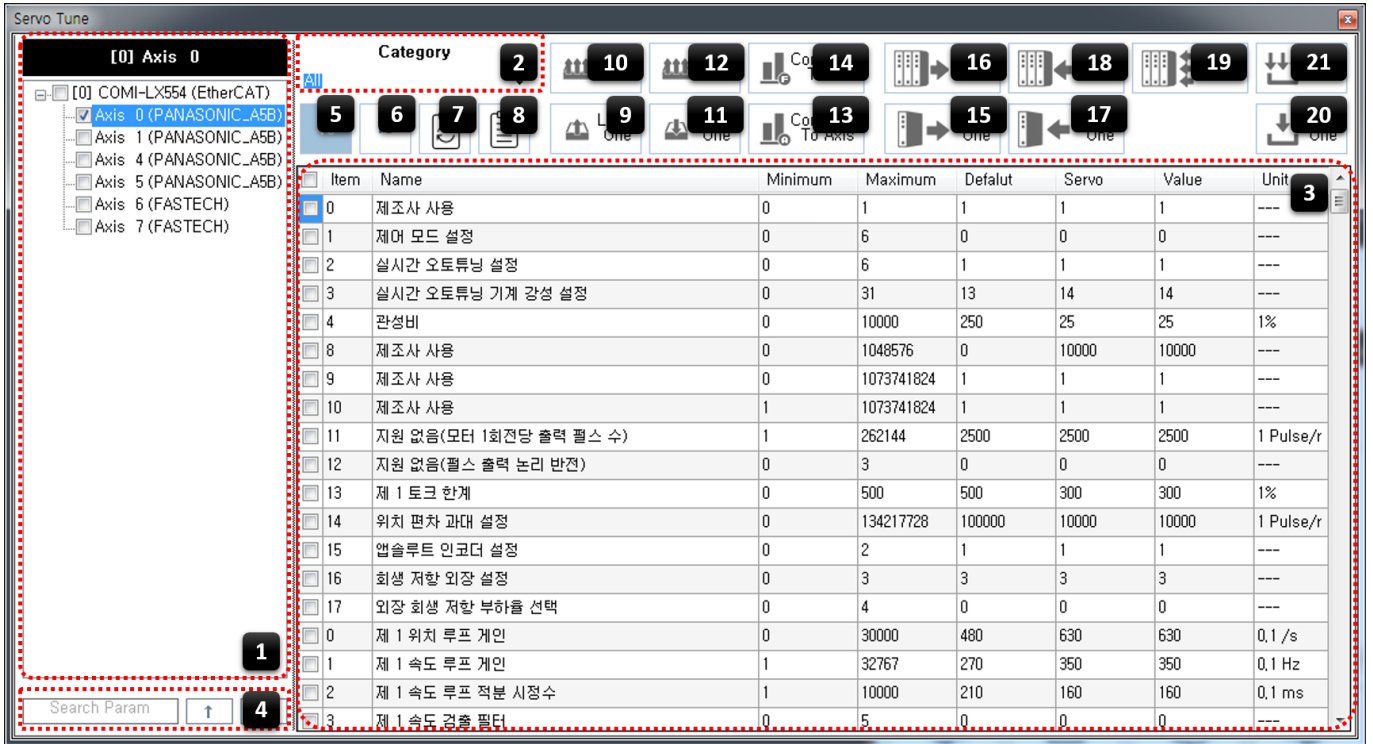


Check 1

× ServoTunes



1 AxisList

- LoadOne / SaveOne / ReadOne One
- LoadAll / SaveAll / ReadAll All

Check

- ReadOne "Axis 4" . ()
- ReadAll "Axis 0" . ()

2 Category

- Category

- Category

3 Parameter List

- - Minimum : 가
 - Maximum : 가
 - Default : ¹⁾
 - **Servo :**
 - **Value : ServoTunes**
 - 'Servo' Write
 - Value cell
 - **MotionIO** 가

4 Search Param

-

5 10 6 16

- 10 16
- Minimum, Maximum, Default, Servo, Value

7 Param Reset

- 'Servo' / 'Value'
- , Read

8 View Details

- Index, DataType, DataSize

9 LoadOne 10 LoadAll

- ²⁾
- 가
- ex) Omron / Panasonic

11 SaveOne 12 SaveAll

-
- Read

13 CompareToAxis

-

14 CompareToFile

- SaveOne

15 ReadOne 16 ReadAll

- Load 'Value' 'Servo'

17 WriteOne

- Value

18 Write 1:N

- Value

19 Write N:N

- Value

20 EepOne 21 EepAll

- 가 EEPROM

× Warning!

ServoTunes

comizoa, , ide, ethercat, , servotunes, ,
 1)

2)
 ServoTunes 가

From:
<http://comizoa.com/info/> - -

Permanent link:
http://comizoa.com/info/doku.php?id=application:comiide:tool:servotunes:10_feature_introduction&rev=1575619381

Last update: 2024/07/08 18:23