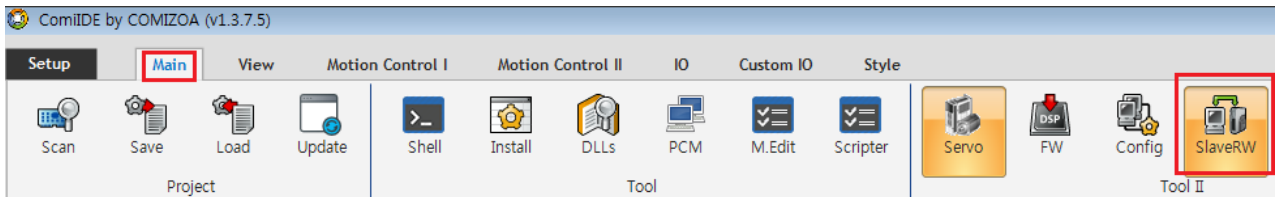


	1
Update	1

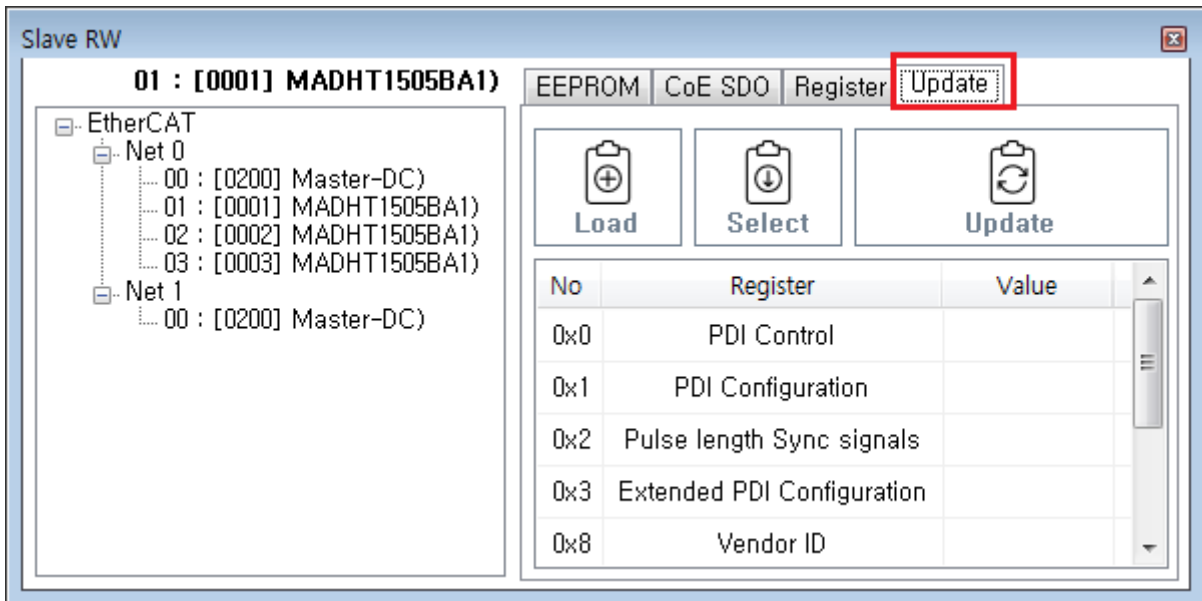
EEPROM Update

x EtherCAT Slave EEPROM Update

- ComiIDE Main - Tool II SlaveRW SlaveRW

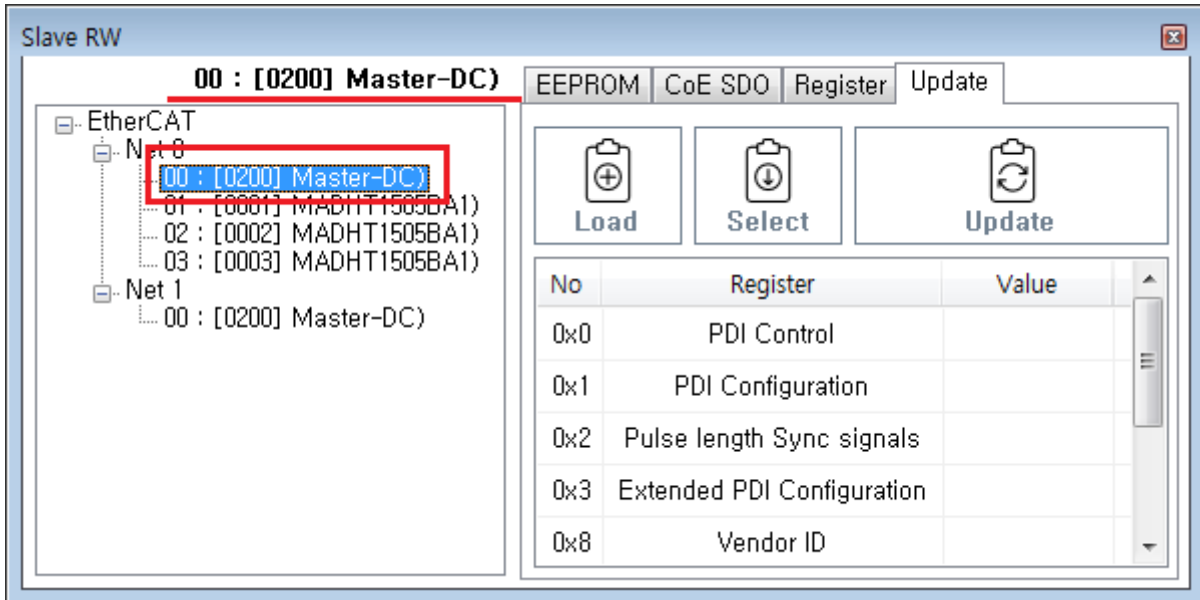


- Update Update

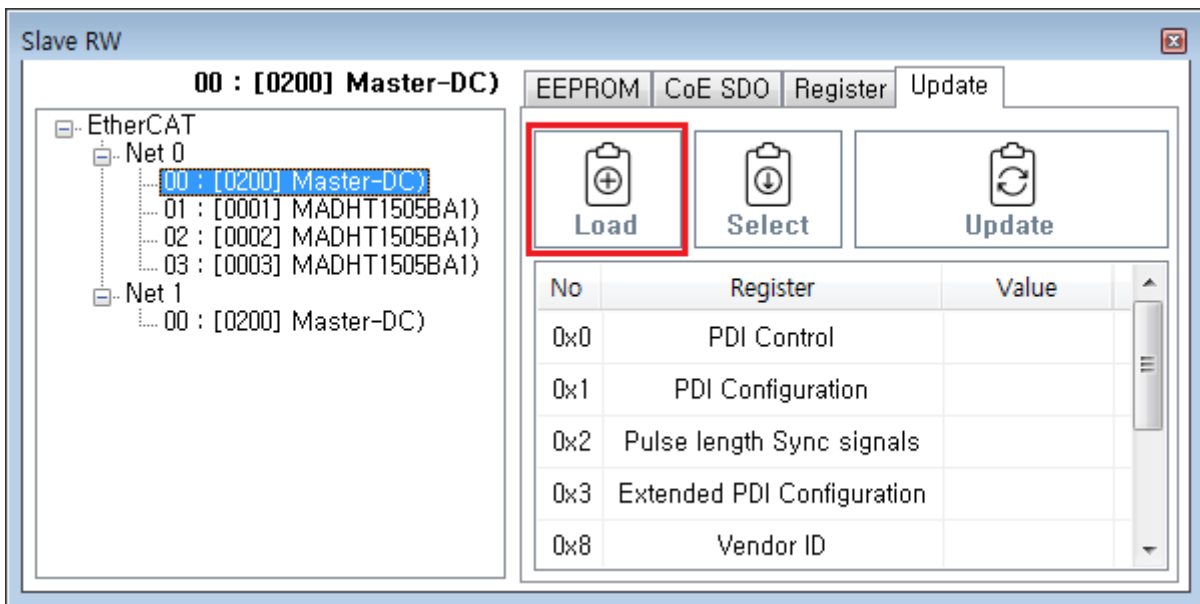


Update

- SlaveList Update Slave MASTER-DC



- Load slaveList



- Slave List Slave
 - ProductCode가 , RevisionNo

Module List

- ... ECS-AI08V
- ... ECS-AI08I
- ... ECS-AI04VH
- ... ECS-AI04IH
- ... ECS-AI04R
- ... ECS-AI04T
- ... ECS-AO04VH
- ... ECS-AO02IH
- ... ECS-AO04IH
- ... ECS-SC02I-232
- ... ECS-SC02I-422/485
- ... ECS-CN08P
- ... EMS-STEP-A1
- ... EPS-Coupler
- ... EPS-DO24
- ... EPS-DI24
- ... EPS-AI08IH
- ... EPS-AO04I
- ... EPS-AI04RnT
- ... EPS-AI08RnT
- MASTER-DC**
14111000
- ... 14111001
- ... ETC-MUR08

Selected MASTER-DC

Clipboard icons: Refresh, Cancel, Confirm

- Update

Slave RW

00 : [0200] Master-DC)

EtherCAT

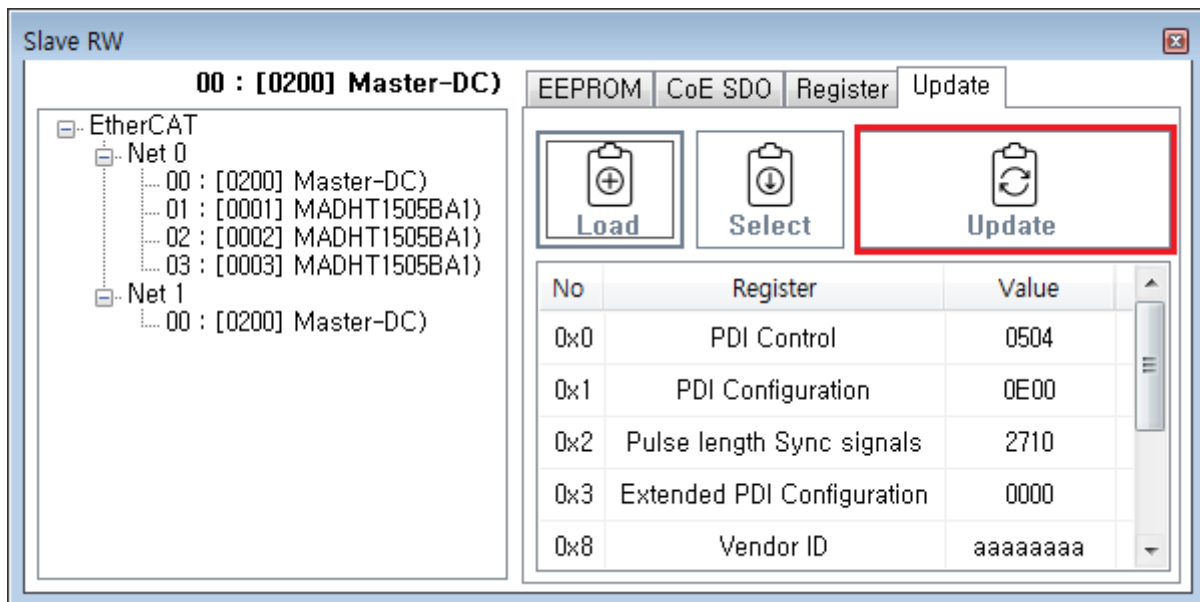
- Net 0
 - 00 : [0200] Master-DC)
 - 01 : [0001] MADHT1505BA1)
 - 02 : [0002] MADHT1505BA1)
 - 03 : [0003] MADHT1505BA1)
- Net 1
 - 00 : [0200] Master-DC)

EEPROM | CoE SDO | Register | Update

Load Select Update

No	Register	Value
0x0	PDI Control	0504
0x1	PDI Configuration	0E00
0x2	Pulse length Sync signals	2710
0x3	Extended PDI Configuration	0000
0x8	Vendor ID	aaaaaaaa

- Update Update



- LogView Update

Time	Channel	Code	Command	Info
17:11:47,389	Slave RW	100	<u>EepromUpload</u>	Success

comizoa, , ide, ethercat, , esc, eeprom, update

From:
<http://comizoa.com/info/> - -
 Permanent link:
<http://comizoa.com/info/doku.php?id=application:comiide:tool:slaverw:update&rev=1611745105>
 Last update: **2024/07/08 18:23**