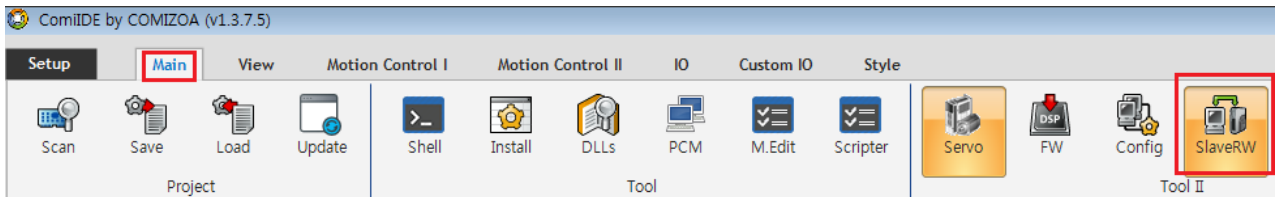


| | | |
|--------|-------|---|
| | | 1 |
| Update | | 1 |

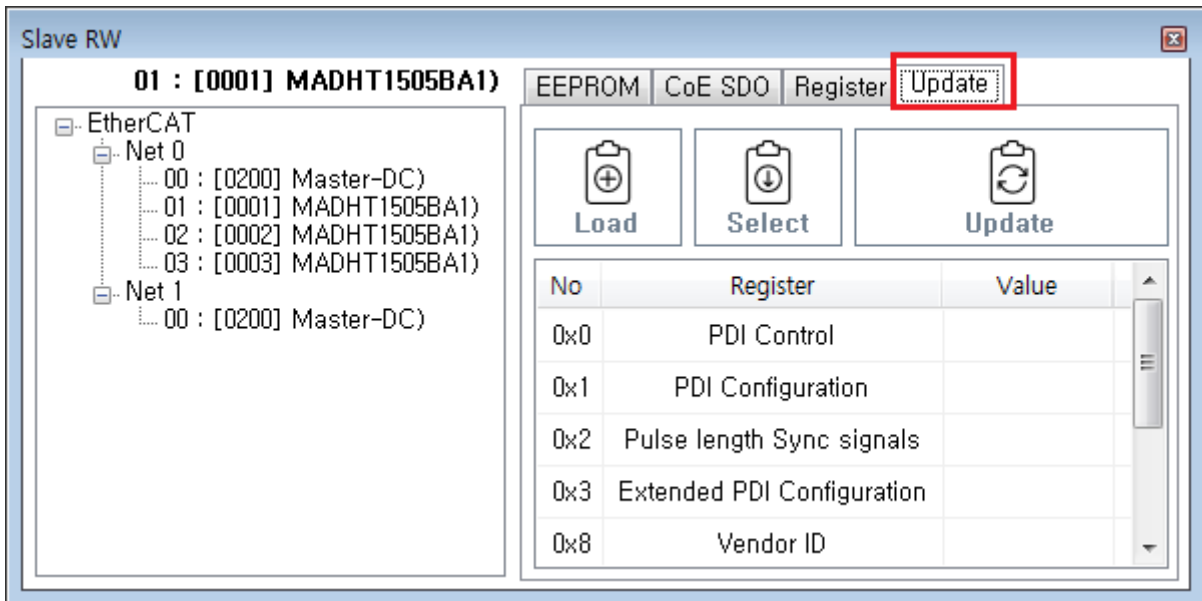
EEPROM Update

x EtherCAT Slave EEPROM Update

- ComiIDE Main - Tool II SlaveRW SlaveRW

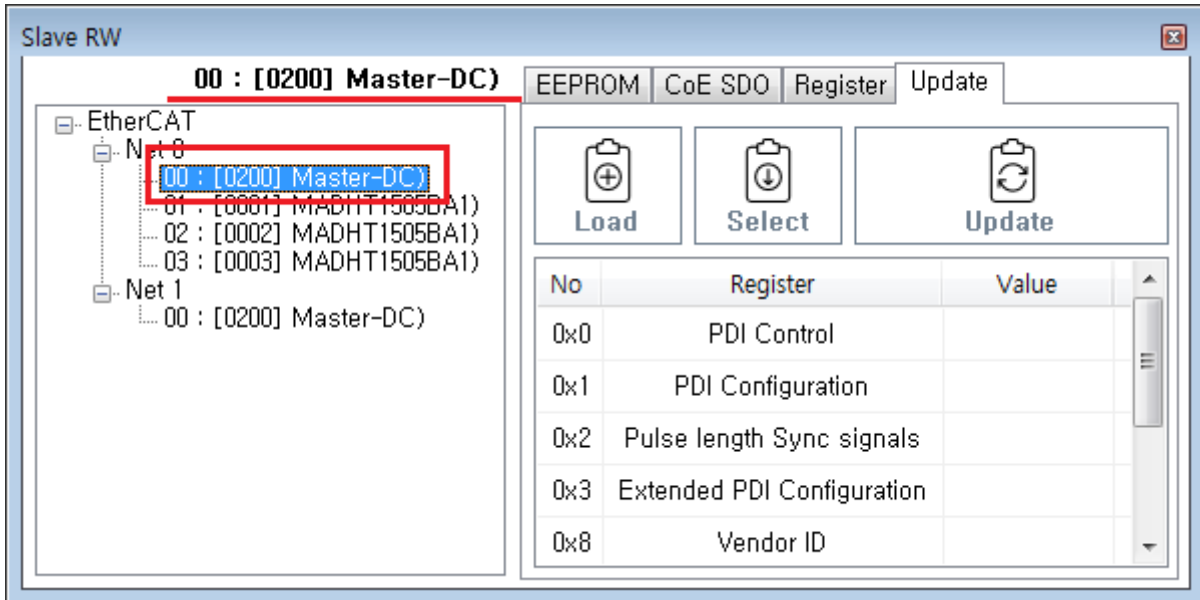


- Update Update

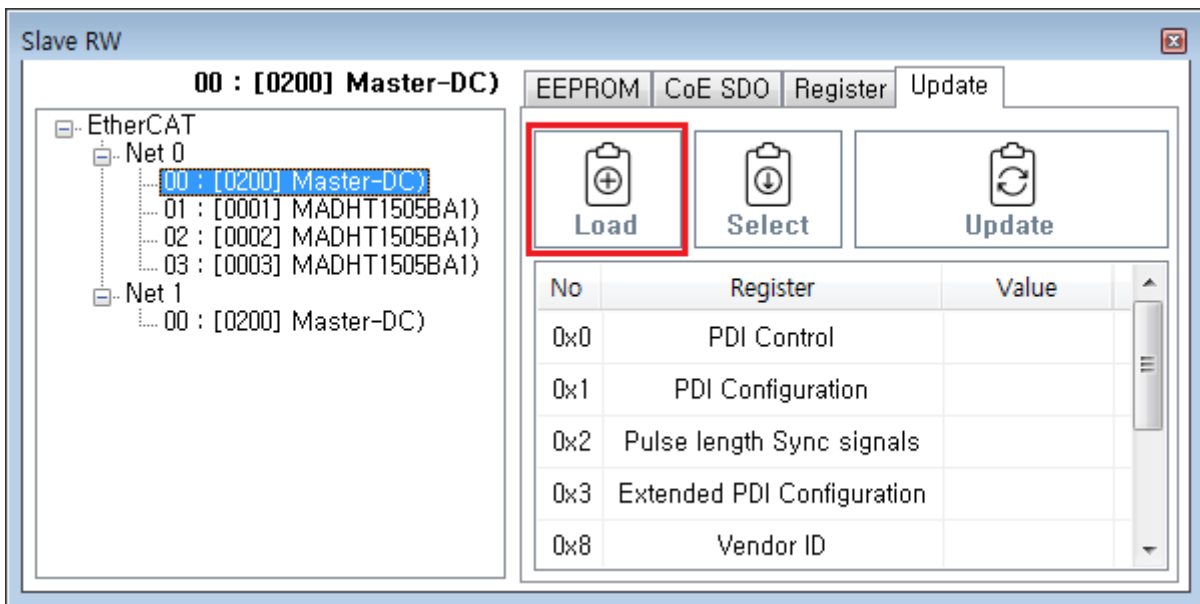


Update

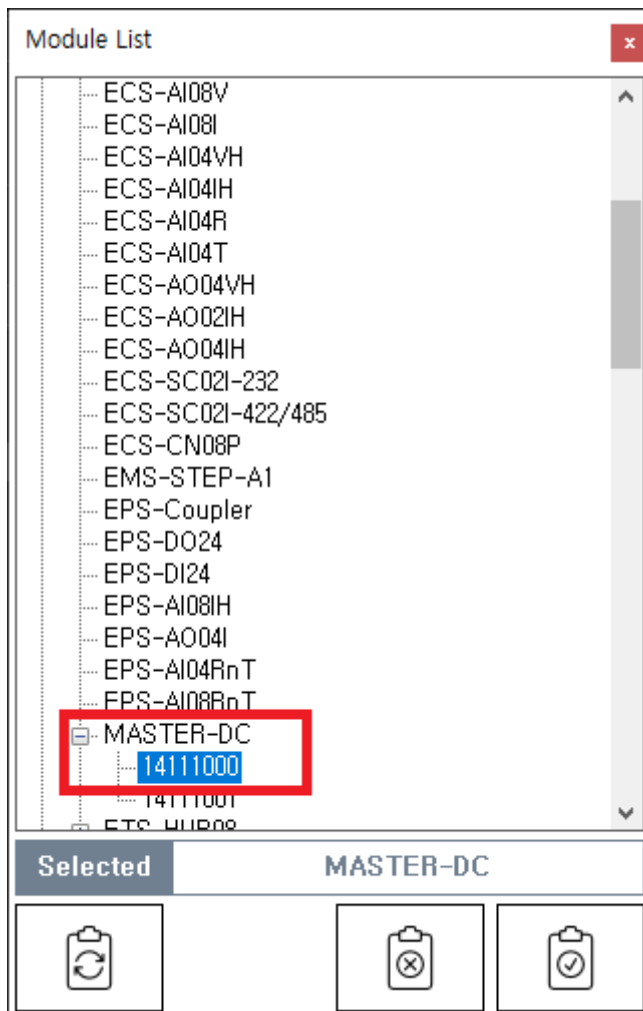
- SlaveList Update Slave MASTER-DC



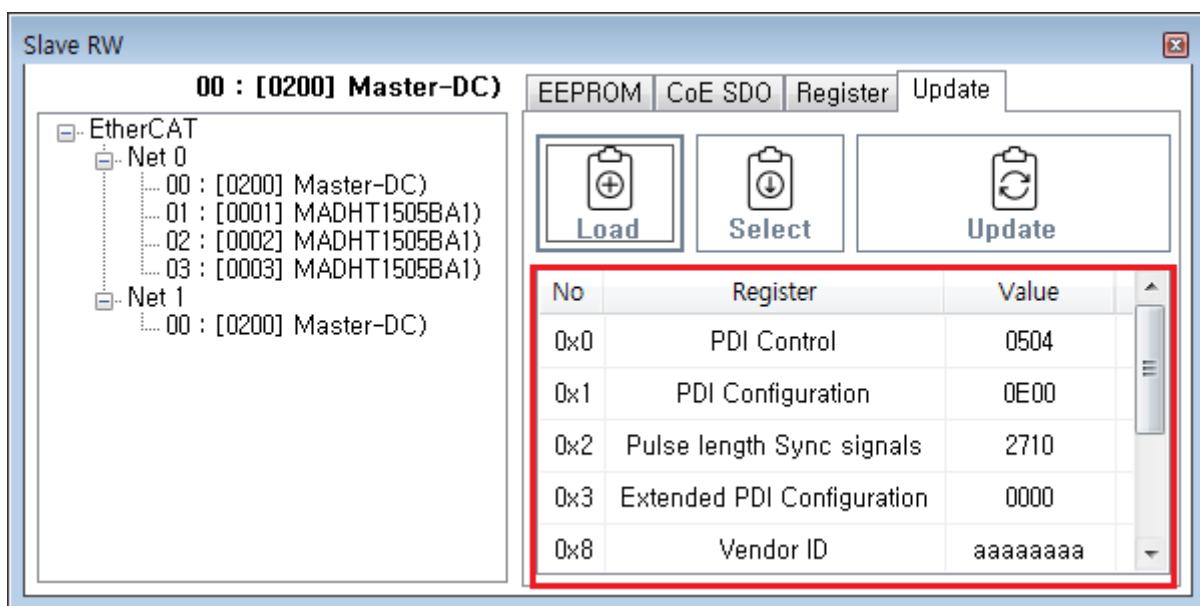
- Load slaveList



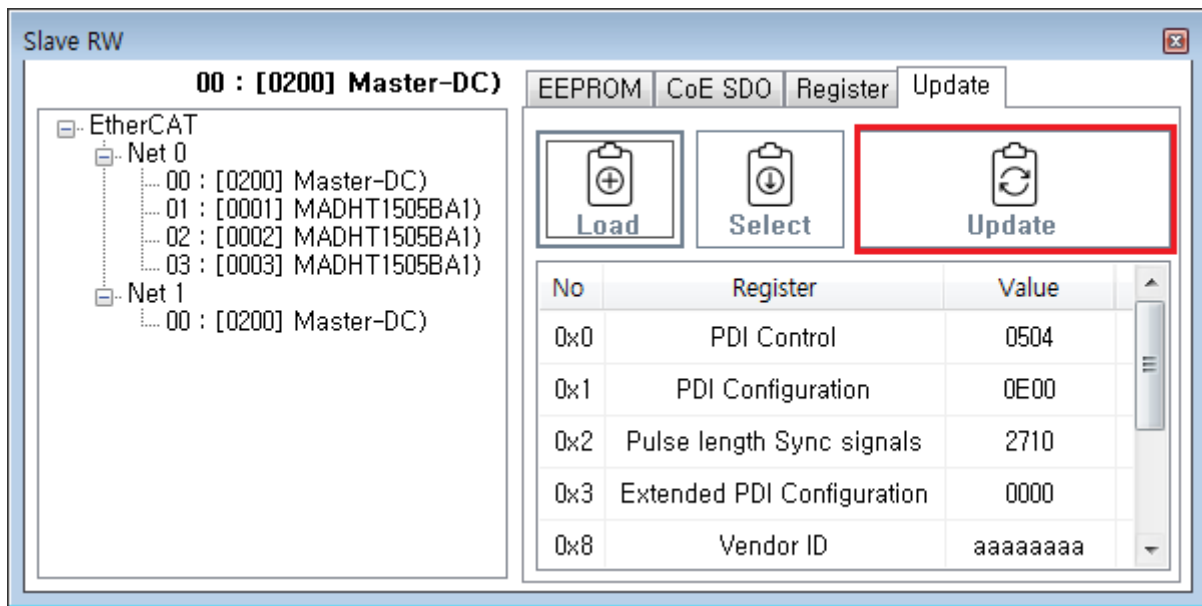
- Slave List Slave
 - ProductCode가 , RevisionNo



- Update



- Update Update .



- LogView Update .

LogView interface showing a log entry:

Clear Log Level 1 : Log only when error occur Search

| Time | Channel | Code | Command | Info |
|--------------|----------|------|---------------------|---------|
| 17:11:47.389 | Slave RW | 100 | <u>EepromUpload</u> | Success |

comizoa, ide, ethercat, esc, eeprom, update

From: <http://comizoa.com/info/> - -

Permanent link: <http://comizoa.com/info/doku.php?id=application:comiide:tool:slaverw:update&rev=1611745162>

Last update: 2024/07/08 18:23