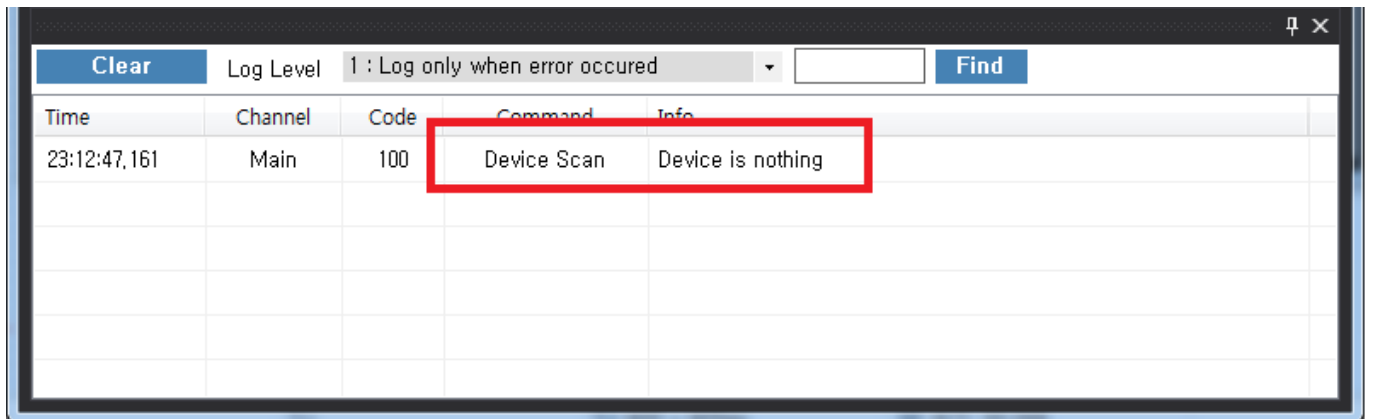
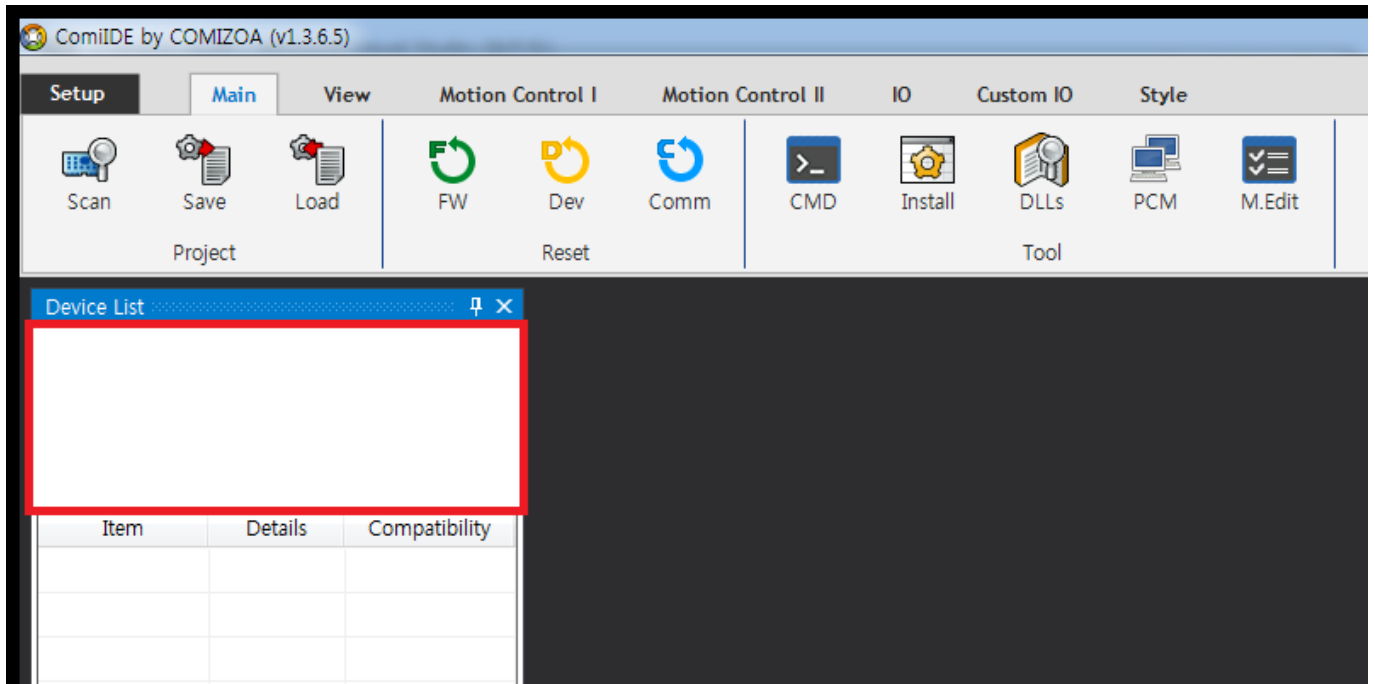


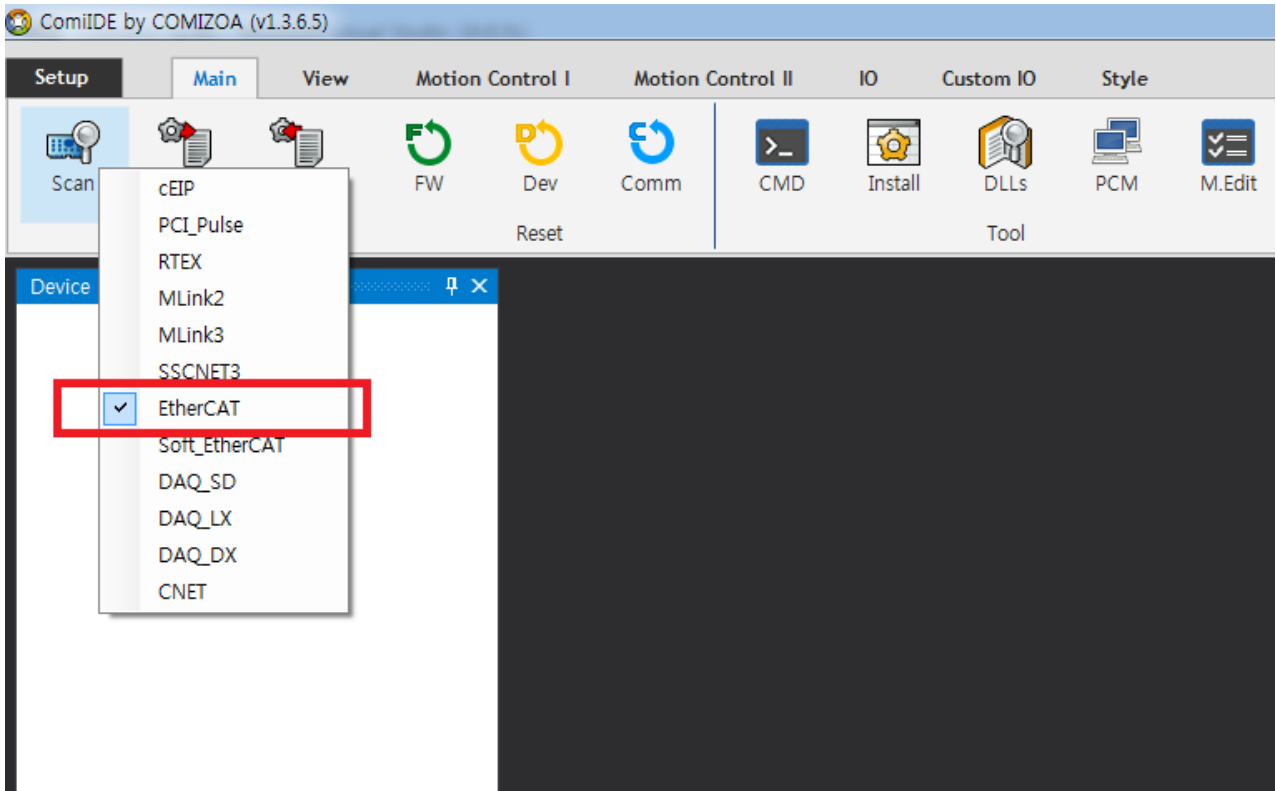
.....	1
Case 1	1
Case 2	3
Case 3	3
Case 4	4
Case 5	4

× ComiIDE Application Device가

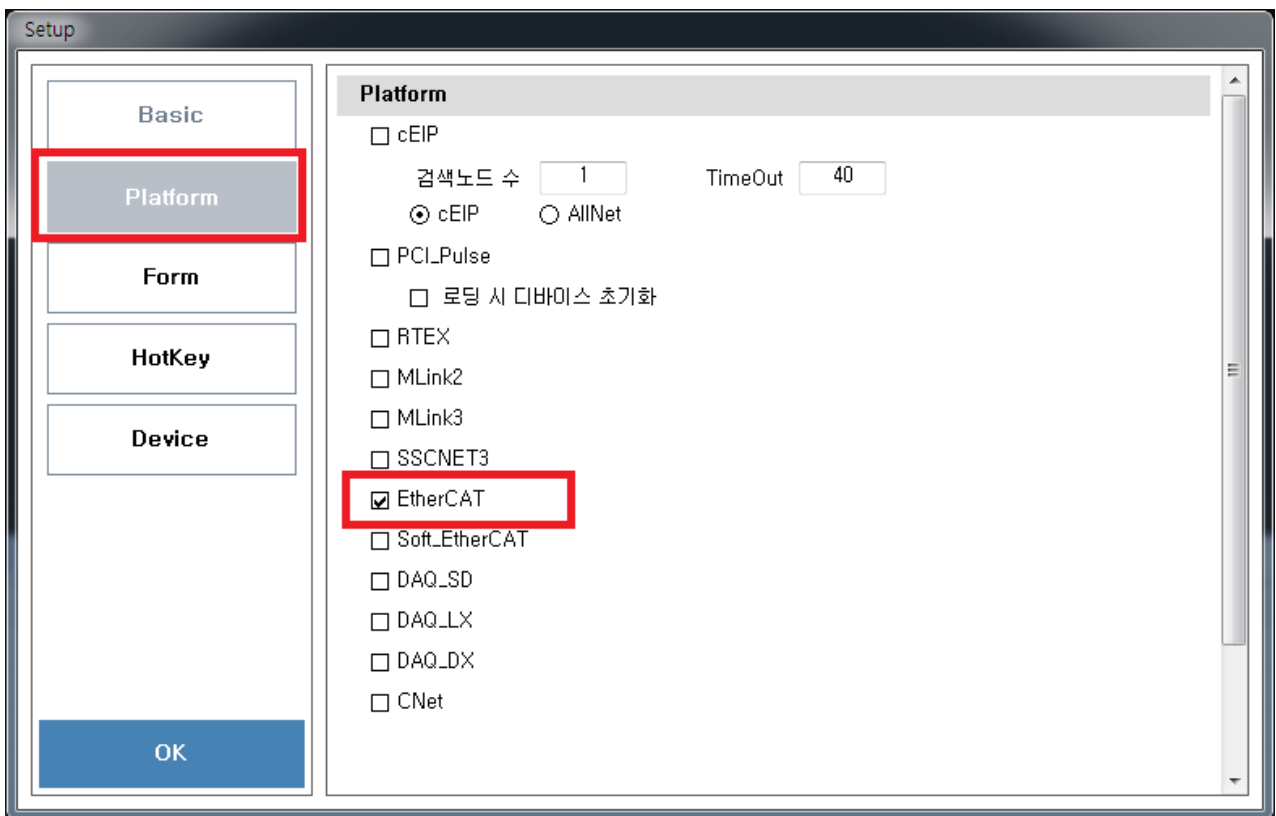


Case 1

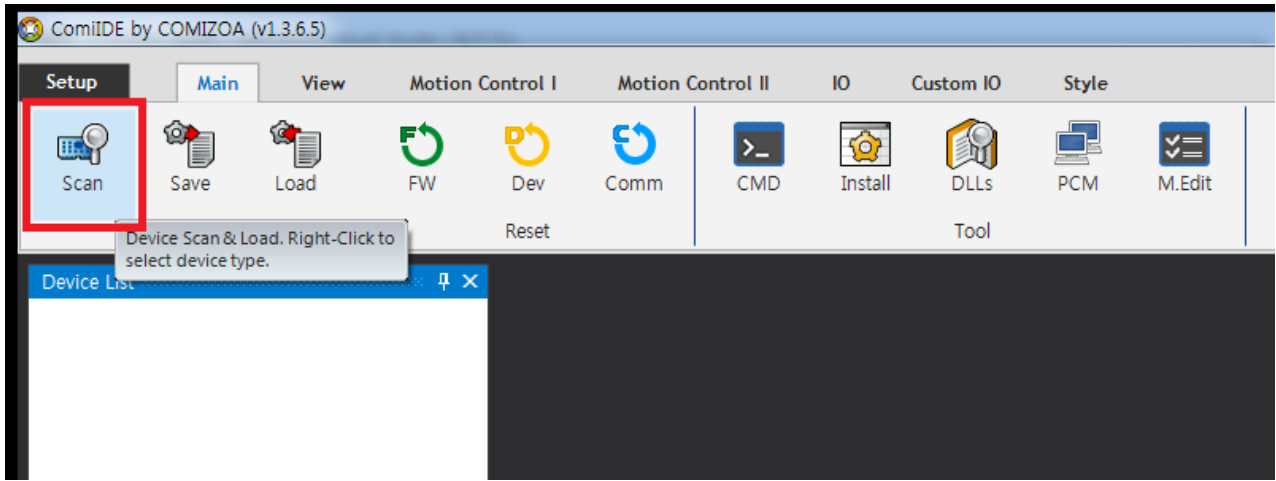
- ComiIDE Platform
- ComiIDE Platform
 - 'Scan' Platform



- 'Setup' 'Device' Tab Platform



- 'Scan' SCAN



Case 2

- Driver 가

Time	Channel	Code	Command	Info
00:15:04,567	EtherCAT	100	Driver Check	Driver is not installed
00:15:05,747	Main	100	Device Scan	Device is nothing

- Driver

Case 3

- DLL (Library)

Time	Channel	Code	Command	Info
00:50:38,542	EtherCAT	100	DLL Check	DLL not found : ComiEcatSdk,DLL
00:50:39,735	Main	100	Device Scan	Device is nothing

- DLL

Case 4

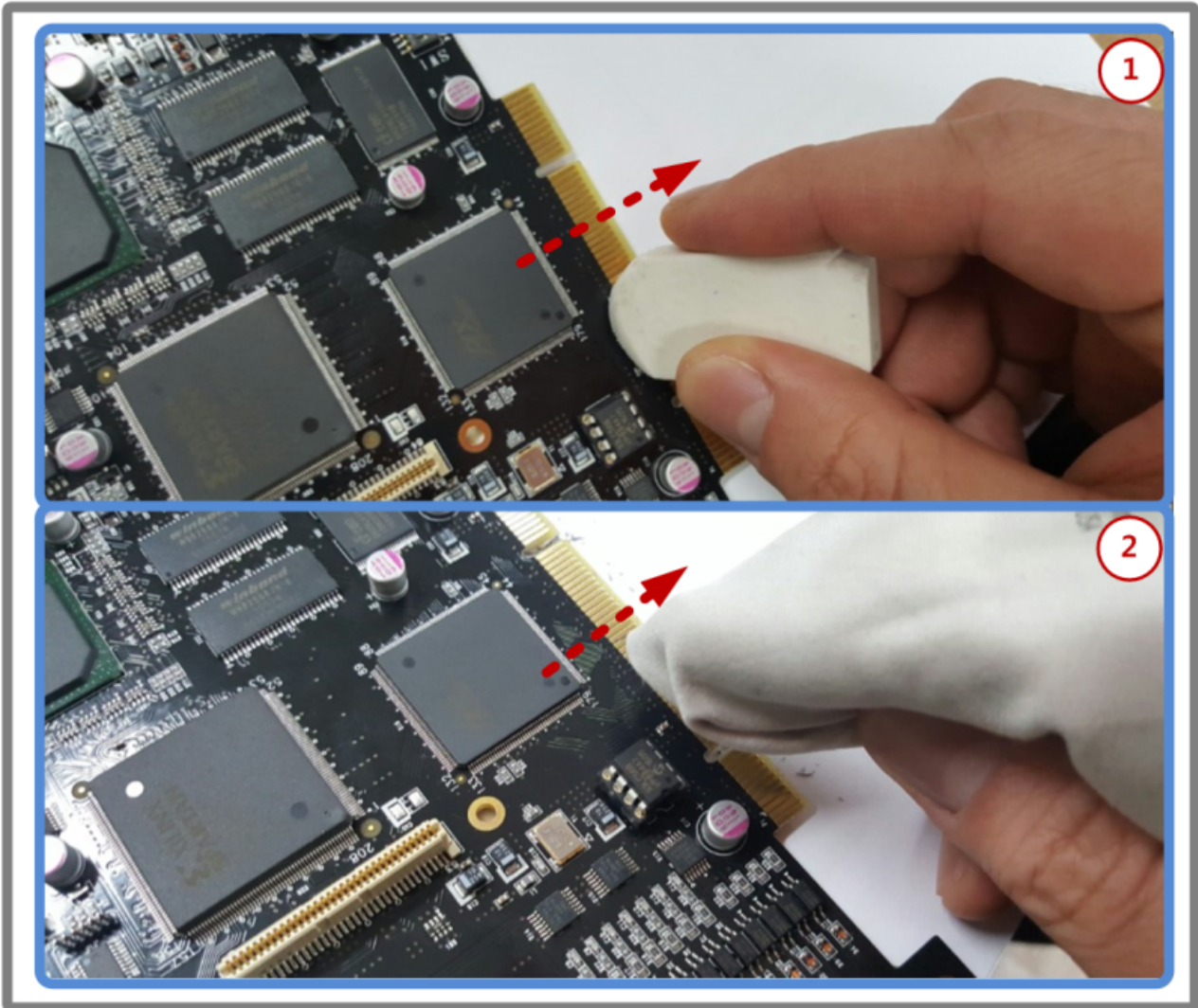
- (OS : x86 / x64) DLL

Time	Channel	Code	Command	Info
09:19:10,649	EtherCAT	100	DLL Check	Check the ComiEcatSdk,dll. It does not match the version of OS
09:19:11,833	Main	100	Device Scan	Device is nothing

- x64 OS x86 DLL
- x86 OS x64 DLL
- ComiIDE x86 OS x86 , X64 OS x64 , DLL OS
- DLL
- x64 OS x86 DLL x86 ComiIDE 1)

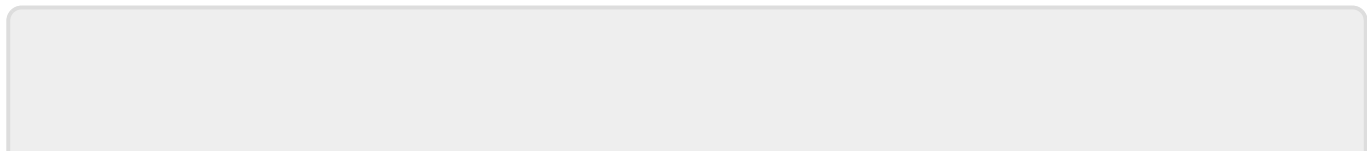
Case 5

- Driver가
- PCI Slot , 가 .
- PCI Slot
- PCI Slot



- PCI
- PCI
- PCI

1) DLL C:\Windows\SysWow64



From:

<http://comizoa.com/info/> - -

Permanent link:

http://comizoa.com/info/doku.php?id=application:comiide:troubleshooting:device_scan_failed&rev=1587002267

Last update: **2024/07/08 18:23**