

Step 1. cEIP IP, ID 1
Step 2. cEIP 2
Step 3. PC Daemon IP 2
Step 4. Daemon 5
Step 5. 8
See Also 10

cEIP Setup

x cEIP

Step 1. cEIP IP, ID



- cEIP

IP

- MSB IP 4 , LSB 4
- MSB가 1, LSB가 F 0x1, 0xF
- IP 192.168.1.31(0x1F) IP가 . 0x01 ~ 0xFE

IP

- ID 0~9 가
- ID ID 가

Step 2. cEIP

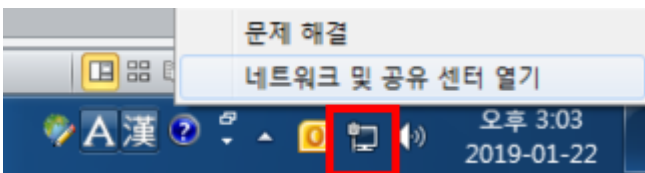


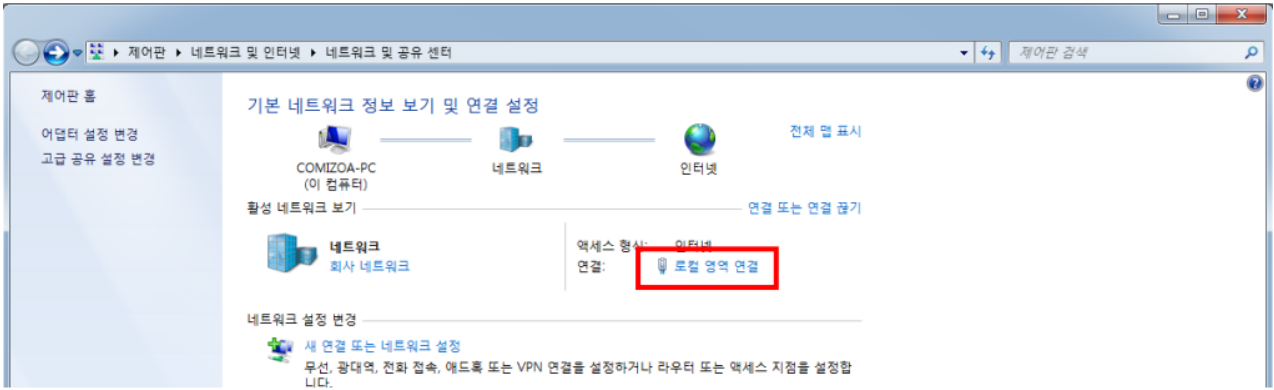
- cEIP

P LED

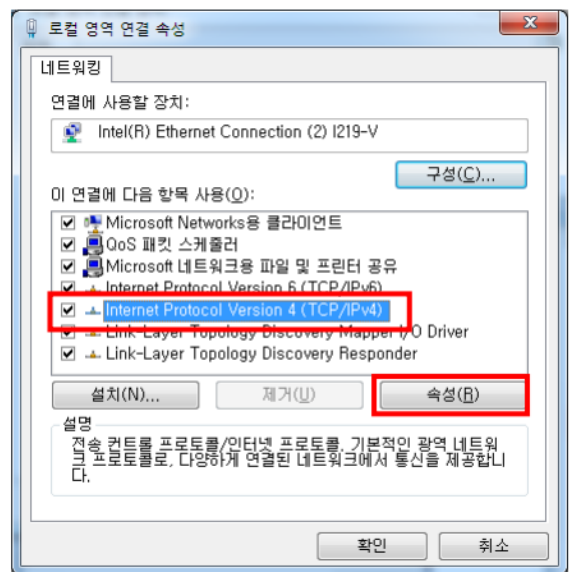
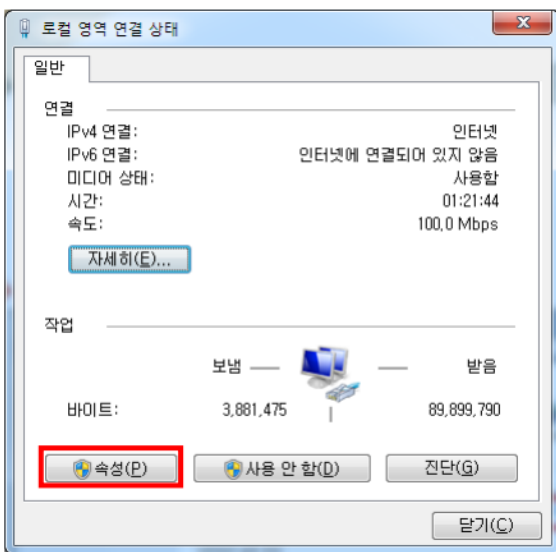
ON, A LED

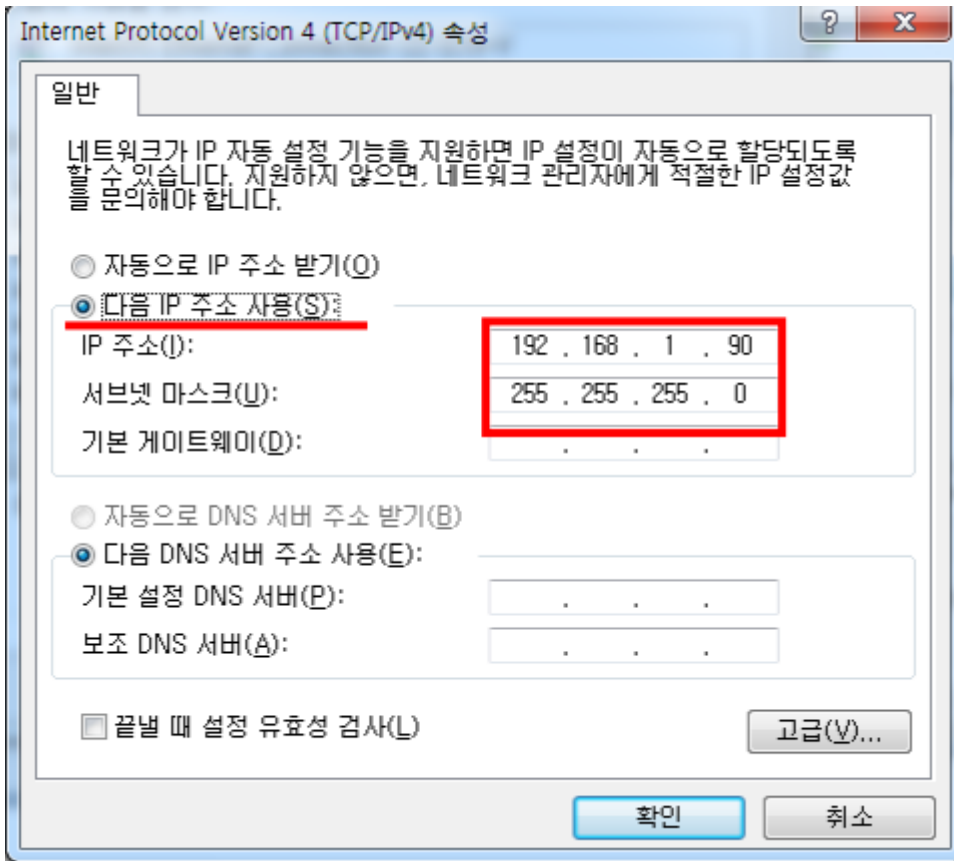
Step 3. PC Daemon IP





• [- [] - []] - cEIP

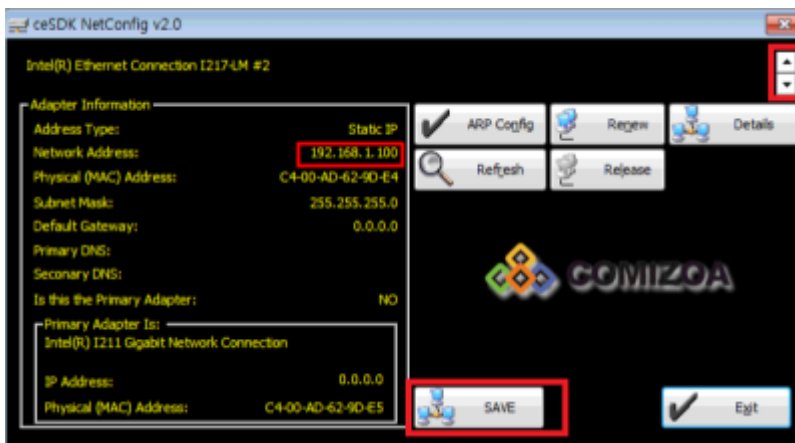




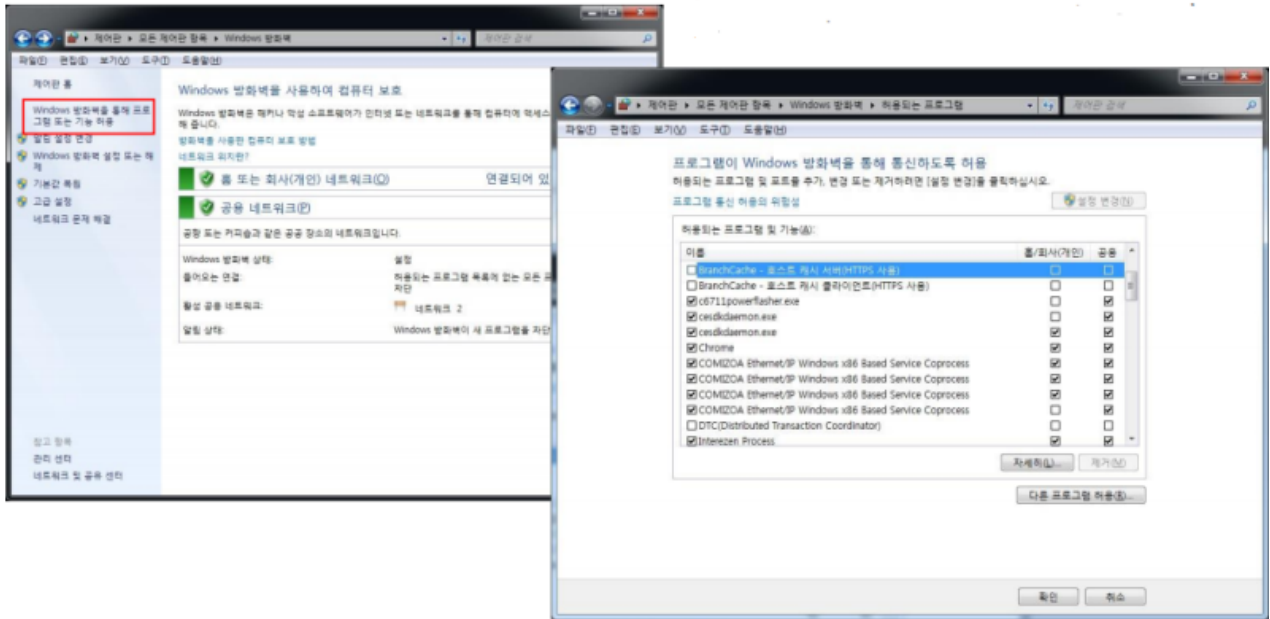
- 192.168.1.1 ~ 192.168.1.254 IP

File Name	Date and Time	Type	Size
VersionManager	2021-10-28 오후 3:36	파일 폴더	
ceNetConfig.exe	2011-03-08 오전 11:06	응용 프로그램	423KB
ceSDKDLL.dll	2019-02-22 오전 9:46	응용 프로그램 확장	3,045KB
CmeBuilder.exe	2015-05-21 오후 2:42	응용 프로그램	3,169KB
DIChecker.exe	2021-02-05 오후 1:13	응용 프로그램	22KB
MADIC.exe	2019-04-05 오후 4:49	응용 프로그램	2,849KB
RDLLMFC.dll	2009-06-09 오후 1:19	응용 프로그램 확장	32KB
VelocityGraph.exe	2013-10-31 오후 2:19	응용 프로그램	1,429KB

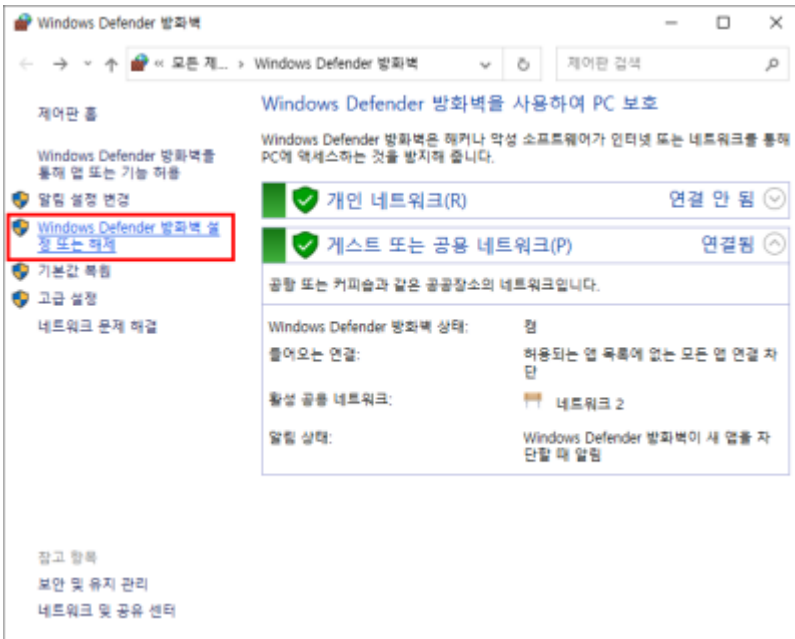
- cEIP ceNetConfig.exe



- IP
- IP가 Save

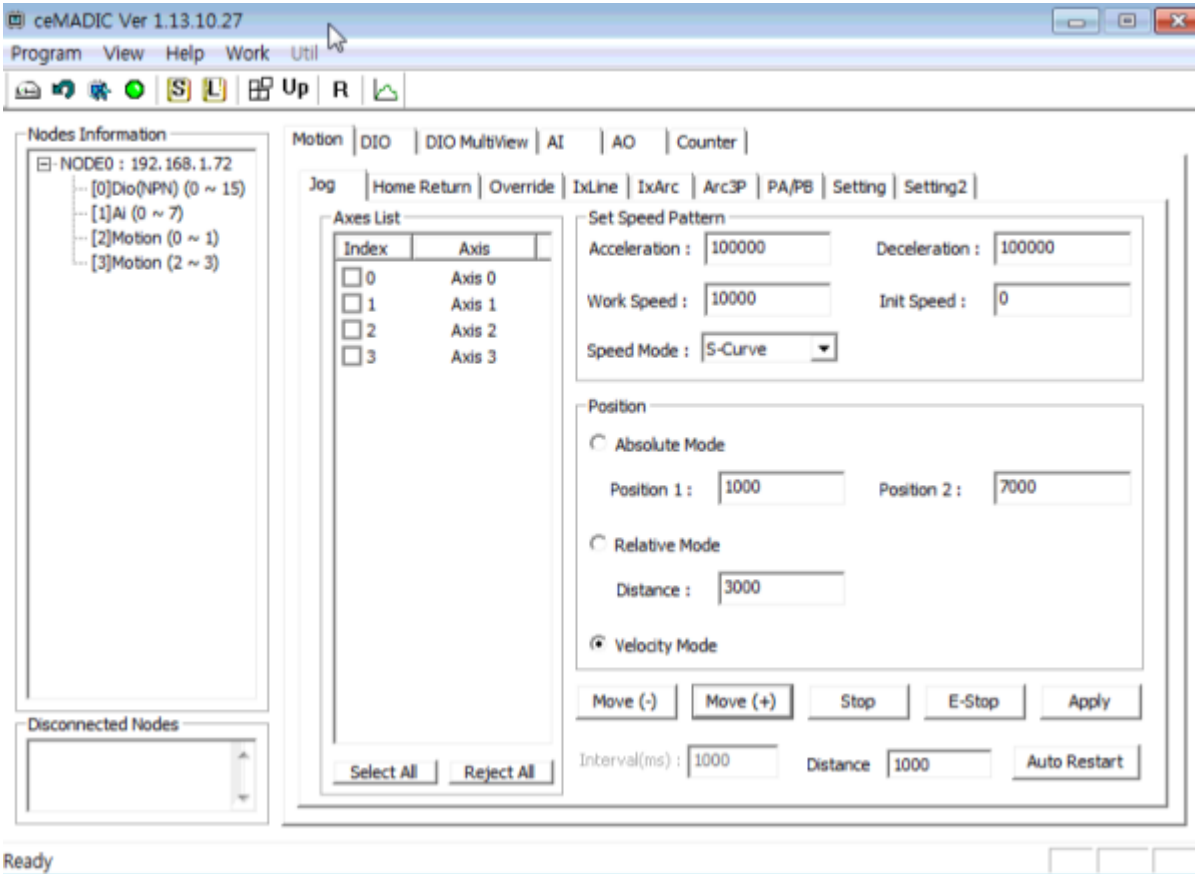


- -
1. C6711powerflasher.exe(ceMN-IP ,)
 2. Cesdkdaemon.exe
 3. COMIZOA Ethernet/IP Windows x86 Based Service Coprocess



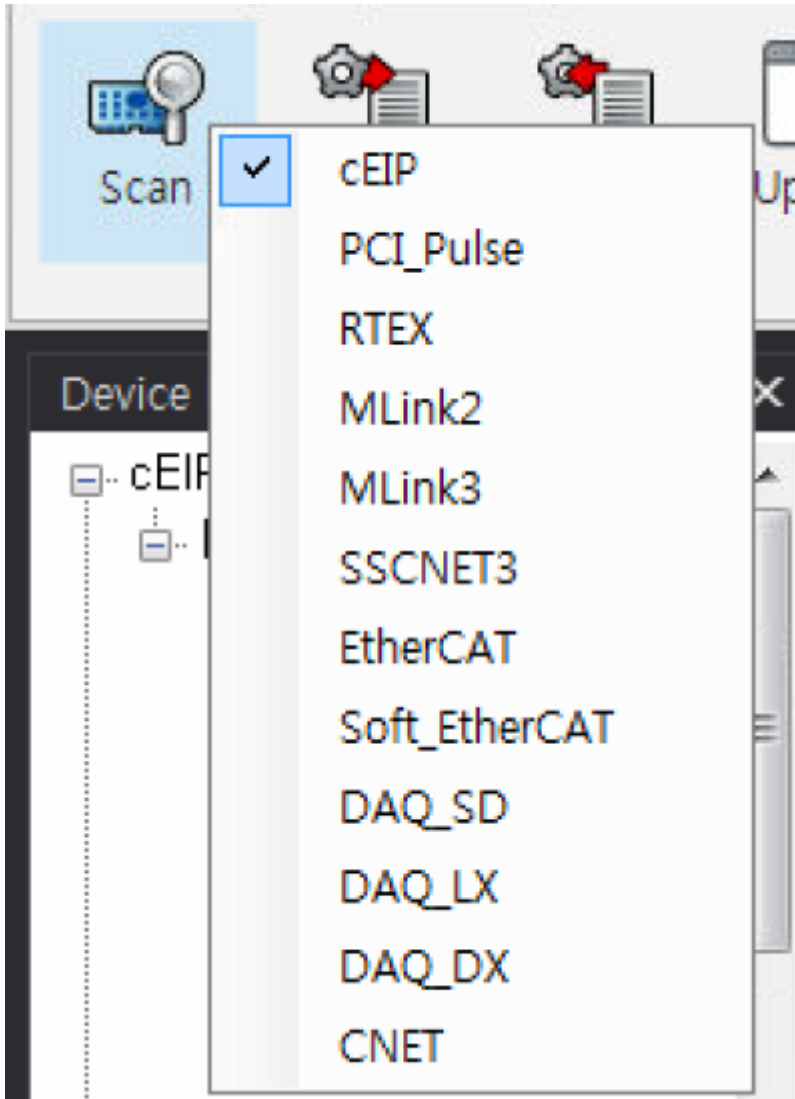
Step 5.

MADIC

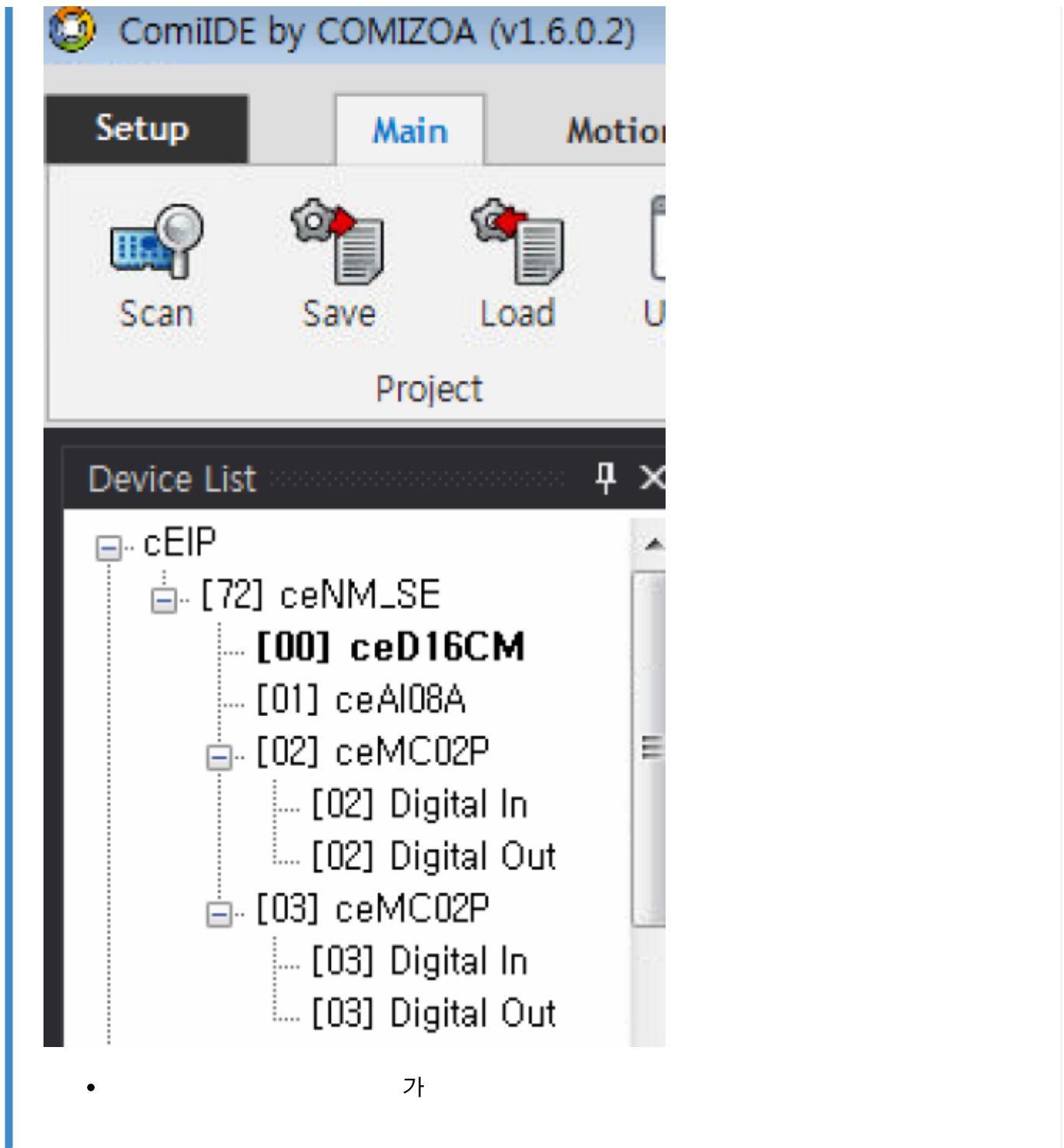


- MADIC
- 가

ComiIDE



- ComilDE Scan cEIP



See Also

[cEIP](#)

[cEIP](#) [가](#)

1)

From:
<http://comizoa.com/info/> - -

Permanent link:
http://comizoa.com/info/doku.php?id=faq:downloadandsetup:ceip:00_ceip_setup&rev=1640222602

Last update: **2024/07/08 18:22**