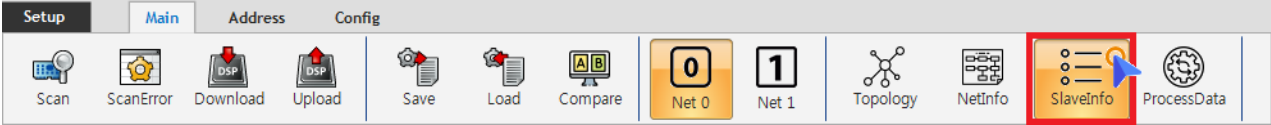


<b>1. Configurator</b>	<b>Download</b> .....	1
<b>2. Slave EEPROM, Register</b>	.....	2

× EtherCAT Config

# 1. Configurator

# Download



• Configurator    Slave Info

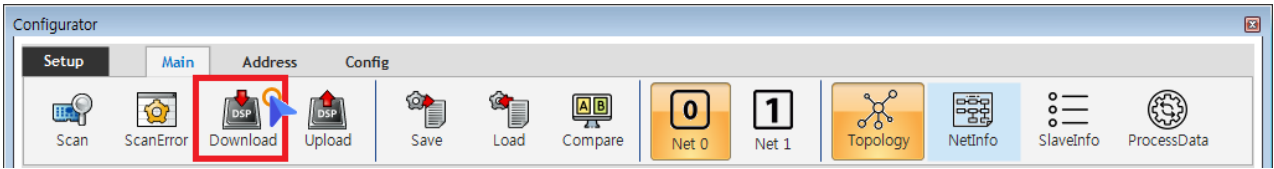
Property FMMU / SM

<b>Product</b>	ETS-A0402MV-E	<b>ProductCode</b>	0x5032D406
<b>Vendor</b>	COMIZOA	<b>VendorID</b>	0xAAAAAAAA
<b>Group</b>	ETS	<b>RevisionNo</b>	0x16102400

<b>Address</b>	
AddressMode <b>A</b>	<b>ALIAS</b>
Alias	580
AliasILMode <b>B</b>	<b>IdentificationADO</b>
AutoAddress	-6
PhysAddr_Hex <b>C</b>	<b>0244</b>
<b>Info</b>	
Physics Type	YY
SyncMode <b>D</b>	<b>FreeRUN</b>
<b>Support</b>	
IsAoE	False
IsCoE	True
IsFoE	True
IsMbx	True
<b>Type</b>	
DeviceType_401 <b>E</b>	<b>AI, AO</b>
ProfileNo	401
SubProfileNo	12

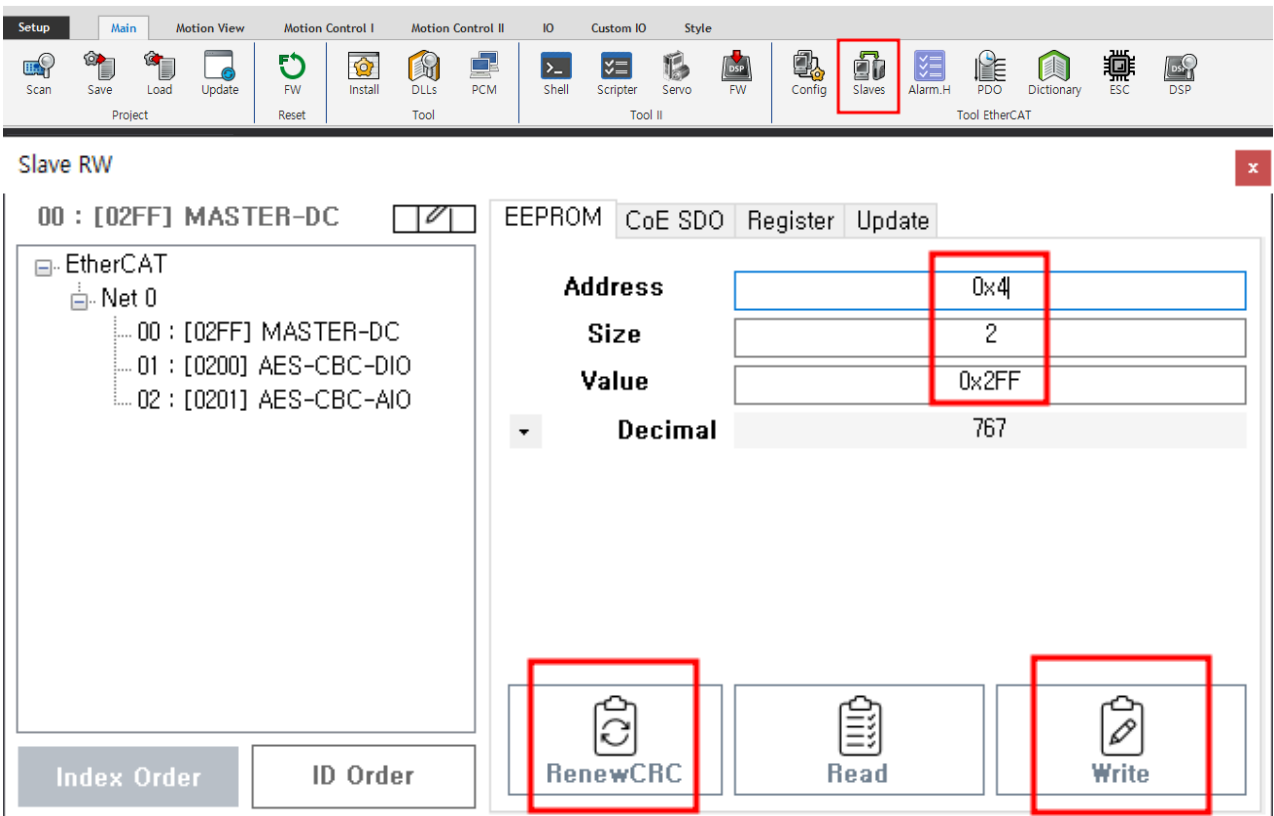
Apply All **3**

• PhysAddr\_Hex    Address



1. Download
- 2.

## 2. Slave EEPROM, Register



1. Slave
2. EEPROM 0x4                      2                      Slave                      Write
3. Renew CRC
- 4.

The screenshot shows the 'Slave RW' application window. On the left, a tree view shows 'EtherCAT' expanded to 'Net 0', with three registers listed: '00 : [02FF] MASTER-DC', '01 : [0200] AES-CBC-DIO', and '02 : [0201] AES-CBC-AIO'. The main area has tabs for 'EEPROM', 'CoE SDO', 'Register', and 'Update'. The 'Register' tab is active, showing a table with the following fields: 'Register' (0x12), 'Size' (2), 'Value' (0x2FF), and 'Decimal' (767). A red box highlights the 'Register' field. Below the table, there are 'Read' and 'Write' buttons, with the 'Read' button also highlighted by a red box. At the bottom, a status bar shows '1. Register 0x12 Read 가'.

From: <http://comizoa.com/info/> - -

Permanent link: [http://comizoa.com/info/doku.php?id=faq:downloadandsetup:ethercat:05\\_slave\\_address\\_set&rev=1654772207](http://comizoa.com/info/doku.php?id=faq:downloadandsetup:ethercat:05_slave_address_set&rev=1654772207)

Last update: 2024/07/08 18:22