

.....	1
.....	1
1. COMIZOA AI/O Slave	1
Solution	1
2. Slave	2
Case 1	2
Case 2	2
Solution	2

Slave

× Slave AI/O Channel

(Range Mode, Analog Type)

- Slave AI/O Channel Setting
- Setting module

- Slave Slave
- http://comizoa.co.kr/info/_media/download:10_ethercat:ets_sw_manual.pdf 17.Page

1. COMIZOA AI/O Slave

Solution

Motion Control I

Motion Control II

IO

Custom IO

Style

late

FW

Reset

Install

DLLs

PCM

Tool

Shell

Scripter

Servo

FW

Tool II

Config

Slaves

Alarm.H

PDO

Dictionary

ESC

DSP

Tool EtherCAT

Object Dictionary

01 : [0201] ETS-AI16AH-E

EtherCAT

Net 0

00 : [03FF] MASTER-DC

01 : [0C01] ETS-AI16AH-E

02 : [0203] ETS-AO04-E

Update Interval

1000

Save

Config

Index	Name	Type	Size	Value	Value_Hex	Flag
0x60D0	Analog Input Channel 13	DT6000	6			
0x60E0	Analog Input Channel 14	DT6000	6			
0x60F0	Analog Input Channel 15	DT6000	6			
0x8000	Analog Input Setting Ch.0	DT8000	12			
0x8010	Analog Input Setting Ch.1	DT8000	12			
0x8020	Analog Input Setting Ch.2	DT8000	12			
0x8030	Analog Input Setting Ch.3	DT8000	12			
0x8040	Analog Input Setting Ch.4	DT8000	12			
0x8050	Analog Input Setting Ch.5	DT8000	12			
0x8060	Analog Input Setting Ch.6	DT8000	12			
0x8070	Analog Input Setting Ch.7	DT8000	12			
0x8080	Analog Input Setting Ch.8	DT8000	12			
0x8090	Analog Input Setting Ch.9	DT8000	12			
0x80A0	Analog Input Setting Ch.10	DT8000	12			
0x80B0	Analog Input Setting Ch.11	DT8000	12			
0x80C0	Analog Input Setting Ch.12	DT8000	12			
0x80D0	Analog Input Setting Ch.13	DT8000	12			
0x80E0	Analog Input Setting Ch.14	DT8000	12			
0x80F0	Analog Input Setting Ch.15	DT8000	12			
0x9000	Device ID	UINT	2	1	0x1	
0xF001	Setting Save Flag	UINT	2	0	0x0	

Index Order

ID Order

◦

Range Mode, Analog Type

Setting Save Flag

0

1

. (0 1)

2. Slave

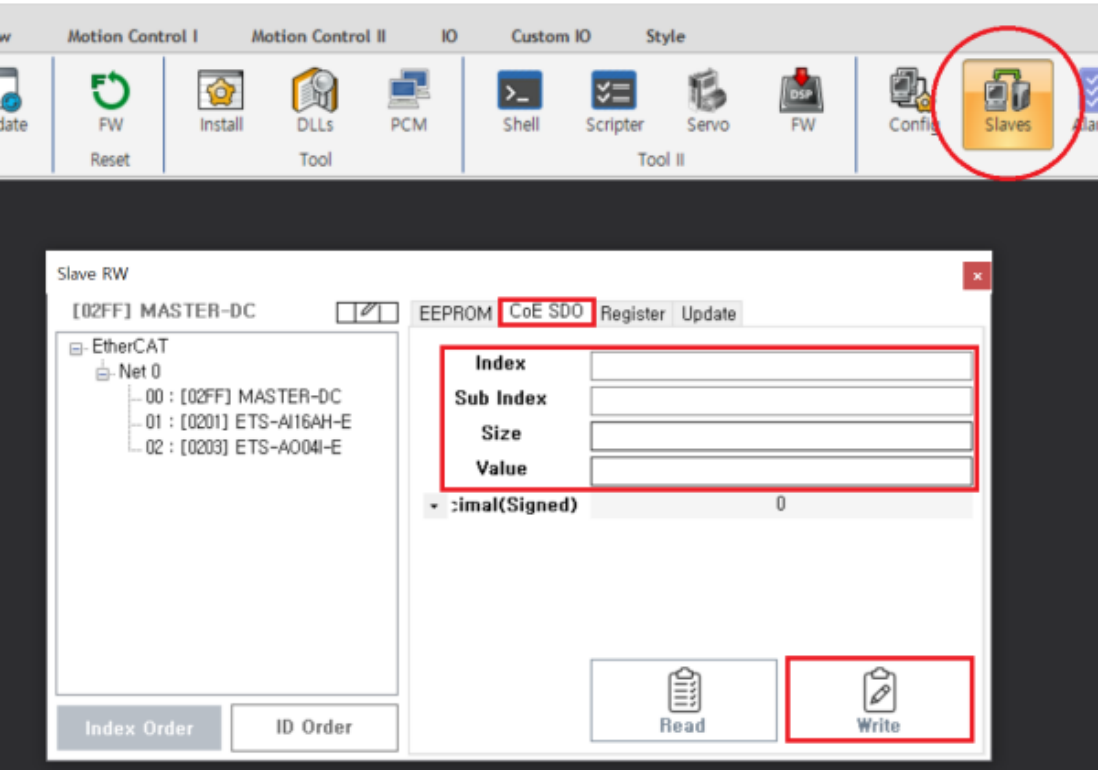
Case 1

* , Dictionary
COMIZOA 가 Dictionary

Case 2

* Dictionary

Solution



- ComiIDE-Slaves-CoE SDO Index,Sub Index,Size,Value Write .
- Sub index = 0, Value = 1 . ()

Module Slave 가 .

