

- 1. Comizoa Serial Daemon** 1
- 2. **Setup** 1
 - 가 1
 - EtherCAT Master Configuration 1
 - Serial Daemon Licence Key 2
- 3. 2
 - COM Port 2
 - Serial Channel 3
 - 5
 - Mapping 6
 - Mapping 6
 - Mapping 7

Comizoa Serial Daemon

× Comizoa Serial Daemon

× Serial Daemon

Comizoa EtherCAT

가

가

1. Comizoa Serial Daemon

Serial_Daemon (v1.1.1.3)

Auto Save Alias Mode

Port Mapping

Num	COM Port	Channel	Baudrate
1	COM 5	Ch.0(1[0])	115,200
2	COM 6	Ch.1(1[0])	115,200
3	COM10	Ch.2(1[0])	57,600
4	COM11	Ch.3(1[0])	57,600

Port Setting

COM Port: COM 5

Serial Channel: CH 0(Idx: 1[0])

Baudrate: 115,200

Data Bits: 8 Bit

Stop Bits: 1 Bit

Parity: None

Serial Mode: RS-232/422

Buttons: Mapping, Modify, Remove

- Serial Daemon [1\) PDO,SDO](#) 가

Windows 가

2. Setup

가

- 가

EtherCAT Master Configuration

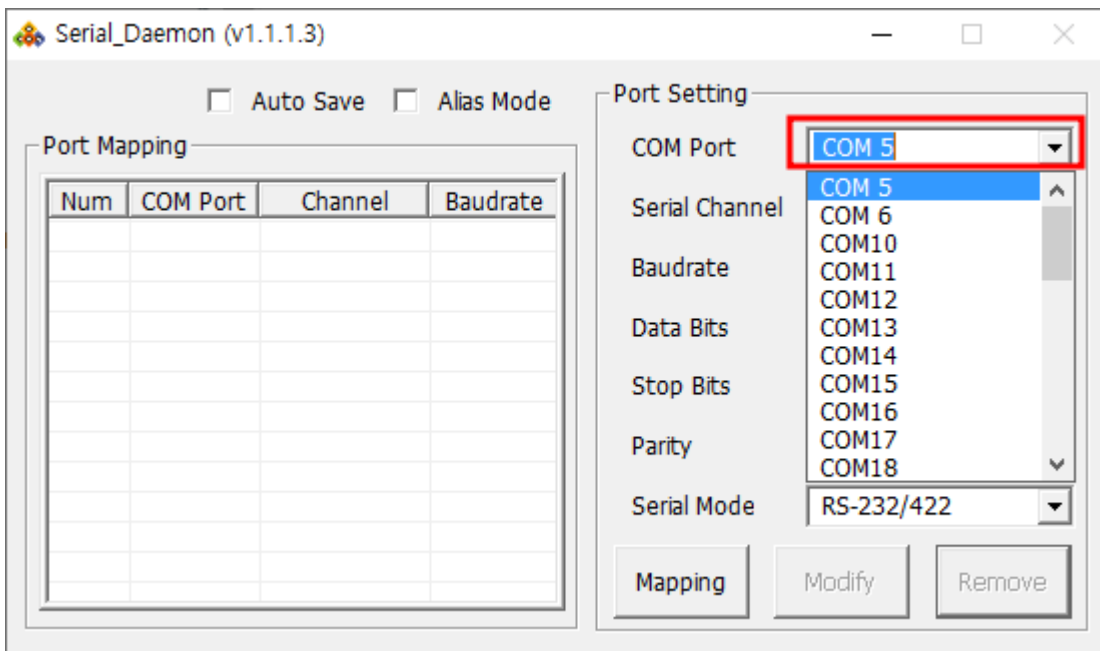
- PCI

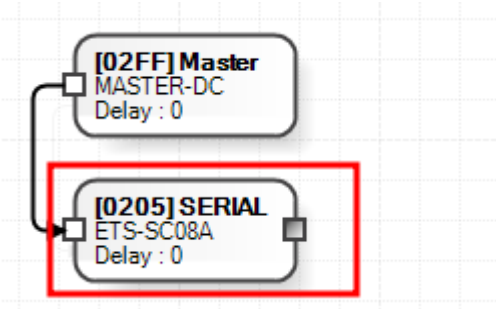
Serial Daemon Licence Key

- Serial Daemon Comizoa 가 .
- Serial Daemon

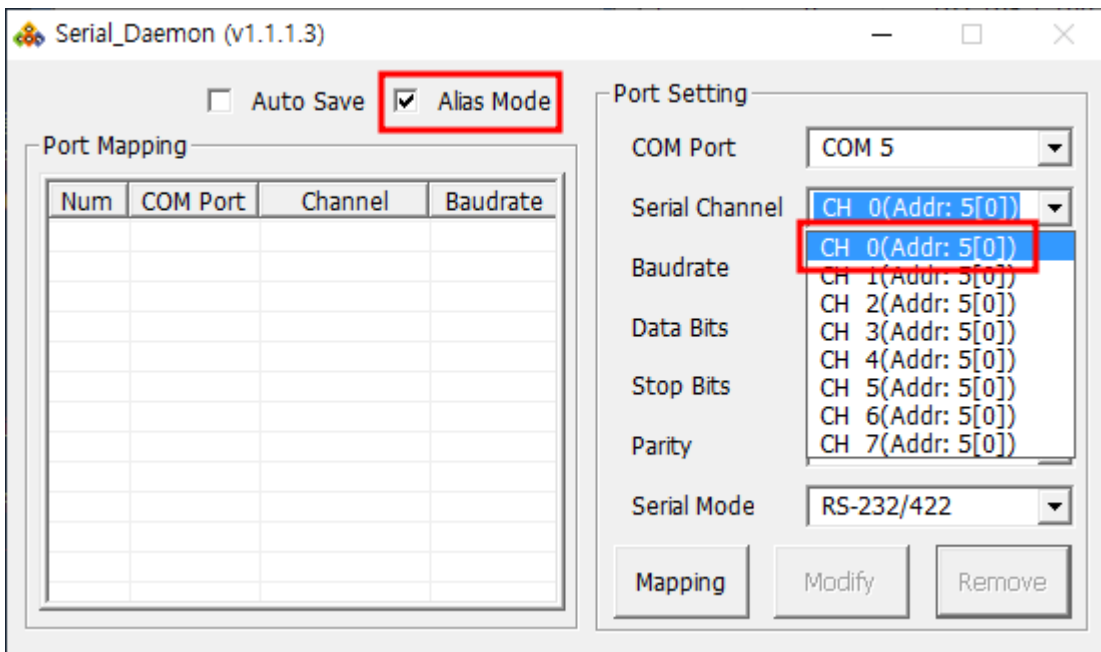
3.

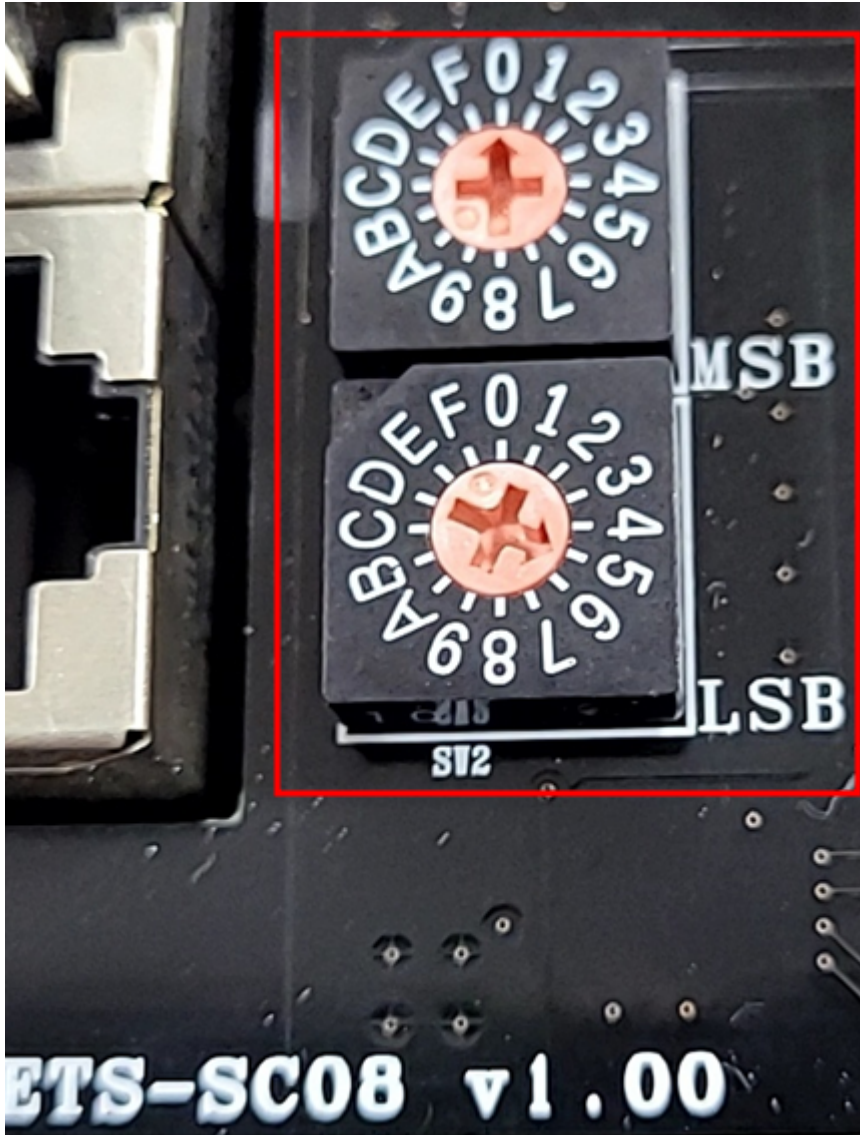
COM Port





- ComboBox Mapping
- Serial Channel
- { } (idx: { } [{ }])
- 1 0



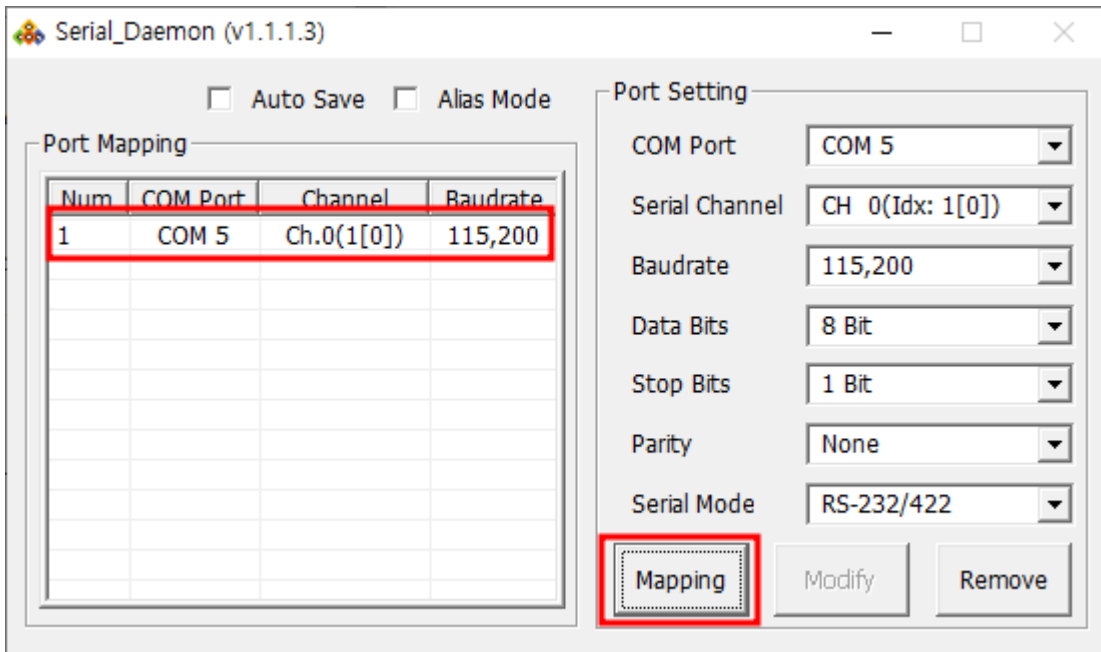


- Alias Serial Channel } (idx: { } [{
- { }]
- Physical Address가 5 0



-

Mapping



-

Mapping

Mapping

Mapping

Serial_Daemon (v1.1.1.3)

Auto Save Alias Mode

Port Mapping

Num	COM Port	Channel	Baudrate
1	COM 5	Ch.0(1[0])	115,200
2	COM 6	Ch.1(1[0])	115,200
3	COM10	Ch.2(1[0])	57,600
4	COM11	Ch.3(1[0])	57,600
5	COM12	Ch.4(1[0])	57,600

Port Setting

COM Port: COM12
Serial Channel: CH 4(Idx: 1[0])
Baudrate: 57,600
Data Bits: 8 Bit
Stop Bits: 1 Bit
Parity: None
Serial Mode: RS-485

Mapping Modify Remove

Serial_Daemon (v1.1.1.3)

Auto Save Alias Mode

Port Mapping

Num	COM Port	Channel	Baudrate
1	COM 5	Ch.0(5[0])	115,200
2	COM 6	Ch.1(5[0])	115,200
3	COM10	Ch.2(5[0])	57,600
4	COM11	Ch.3(5[0])	57,600

Port Setting

COM Port: COM12
Serial Channel: CH 4(Addr: 5[0])
Baudrate: 57,600
Data Bits: 8 Bit
Stop Bits: 1 Bit
Parity: None
Serial Mode: RS-485

Mapping Modify Remove

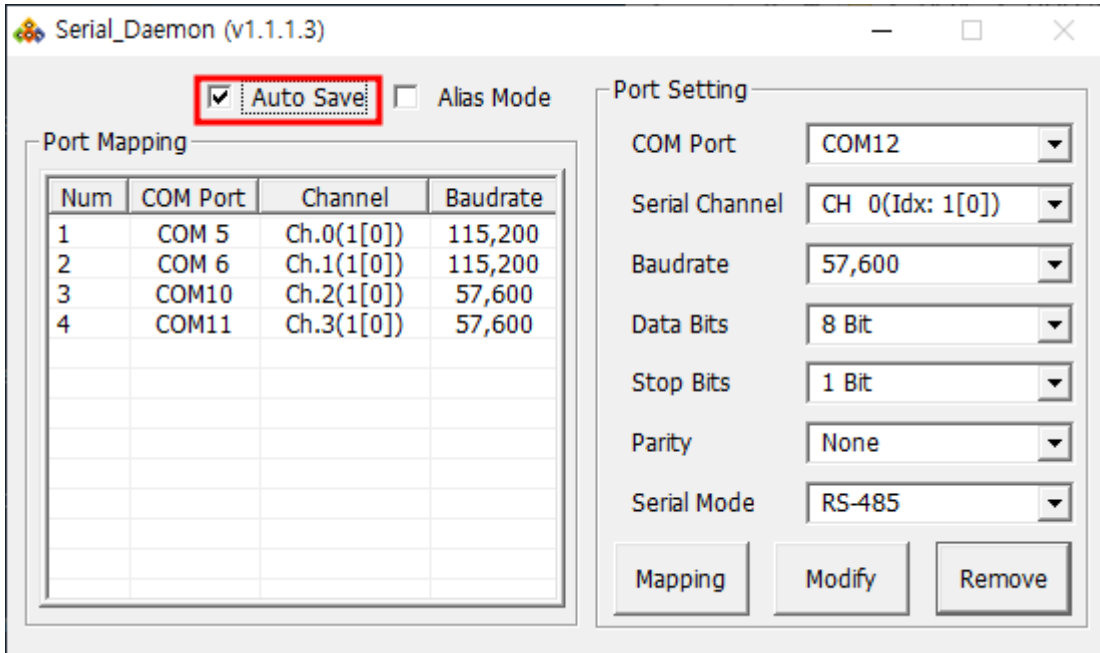
- Mapping **Remove**

Mapping

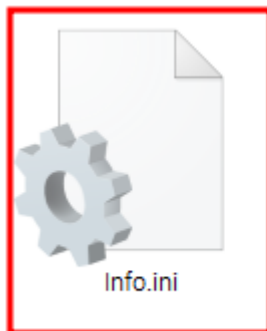
Serial_Daemon

매핑 정보를 저장 하시겠습니까?

예(Y) 아니요(N)



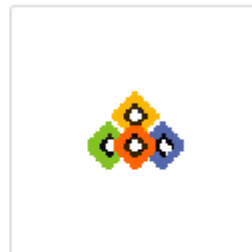
- Mapping
- Mapping
- Info.INI
- - **Auto Save**



Info.ini



LXUARTCON.dll



Serial_Daemon.exe

