

- 1. Comizoa Serial Daemon** 1
- 2. **Setup** 1
 - 가 1
 - EtherCAT Master Configuration 2
 - Serial Daemon Licence Key 2
- 3. 2
 - COM Port 2
 - Serial Channel 3
 - 5
 - Mapping 6
 - Mapping 6
 - Mapping 7
 - Serial 9

가 _ _ .pdf

Comizoa Serial Daemon

× Comizoa Serial Daemon

× Serial Daemon

Comizoa EtherCAT

가

가

1. Comizoa Serial Daemon

Serial_Daemon (v1.1.1.3)

Auto Save Alias Mode

Port Mapping

Num	COM Port	Channel	Baudrate
1	COM 5	Ch.0(1[0])	115,200
2	COM 6	Ch.1(1[0])	115,200
3	COM10	Ch.2(1[0])	57,600
4	COM11	Ch.3(1[0])	57,600

Port Setting

COM Port: COM 5

Serial Channel: CH 0(Idx: 1[0])

Baudrate: 115,200

Data Bits: 8 Bit

Stop Bits: 1 Bit

Parity: None

Serial Mode: RS-232/422

Buttons: Mapping, Modify, Remove

- Serial Daemon
- Windows
- 1) PDO,SDO
- 가
- 가

2. Setup

가

- 가
- 가

_ _ .pdf

EtherCAT Master Configuration

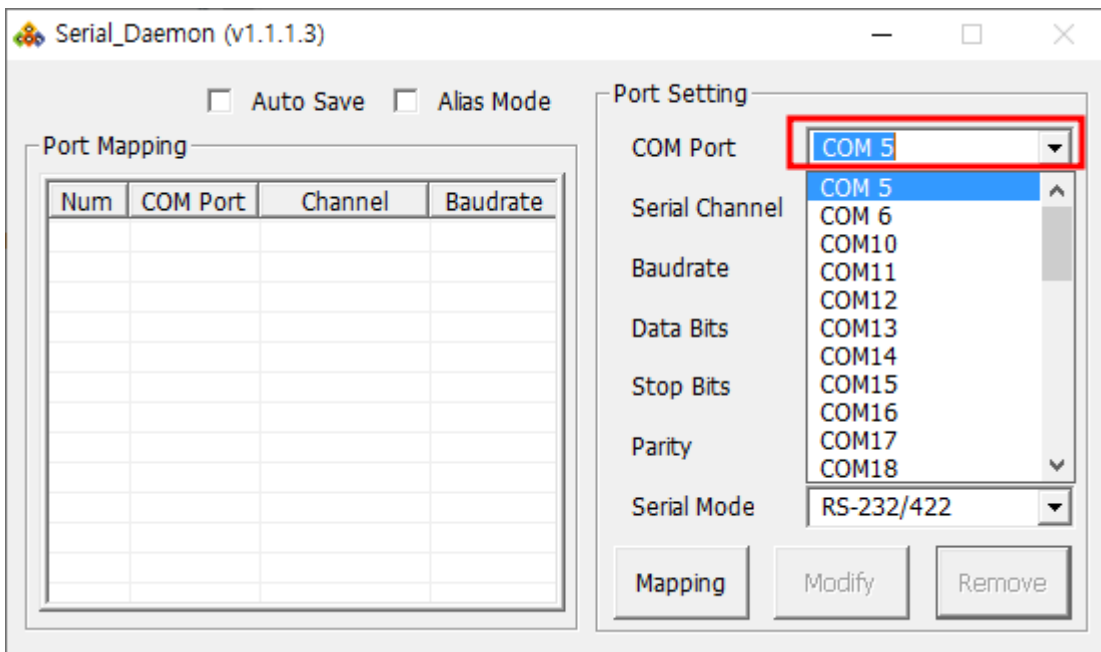
- PCI

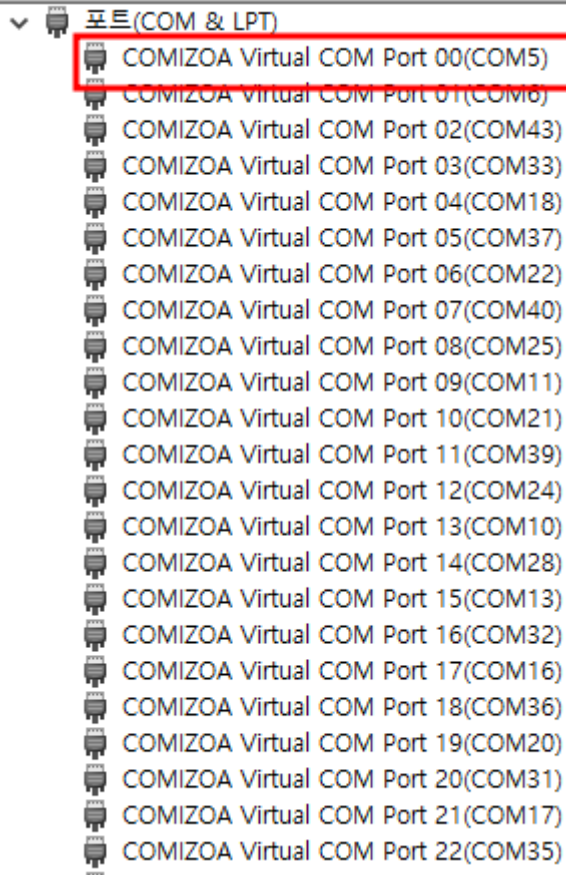
Serial Daemon Licence Key

- Serial Daemon
Comizoa 가 .
 - Serial Daemon

3.

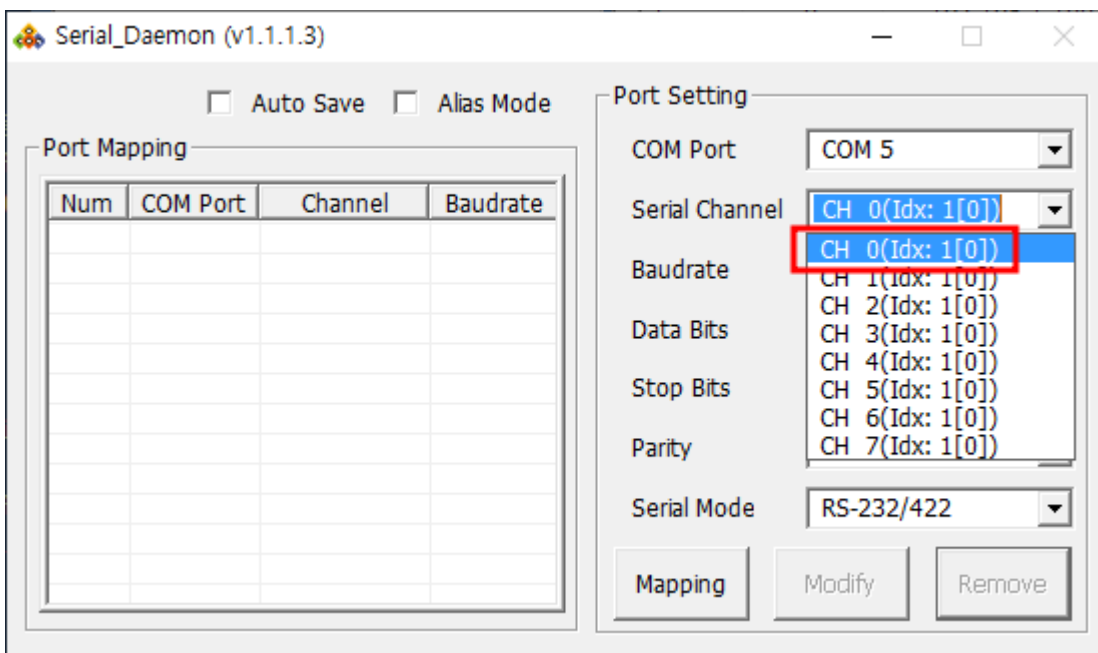
COM Port

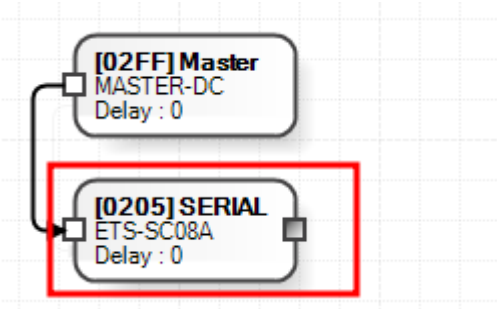




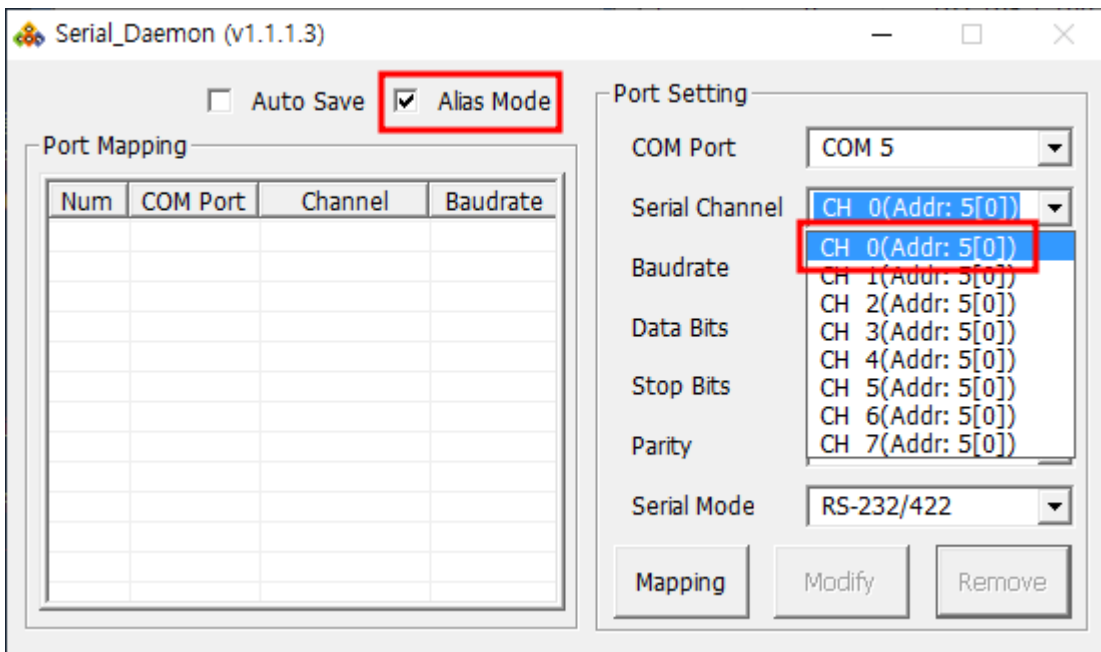
- 가 COM Port

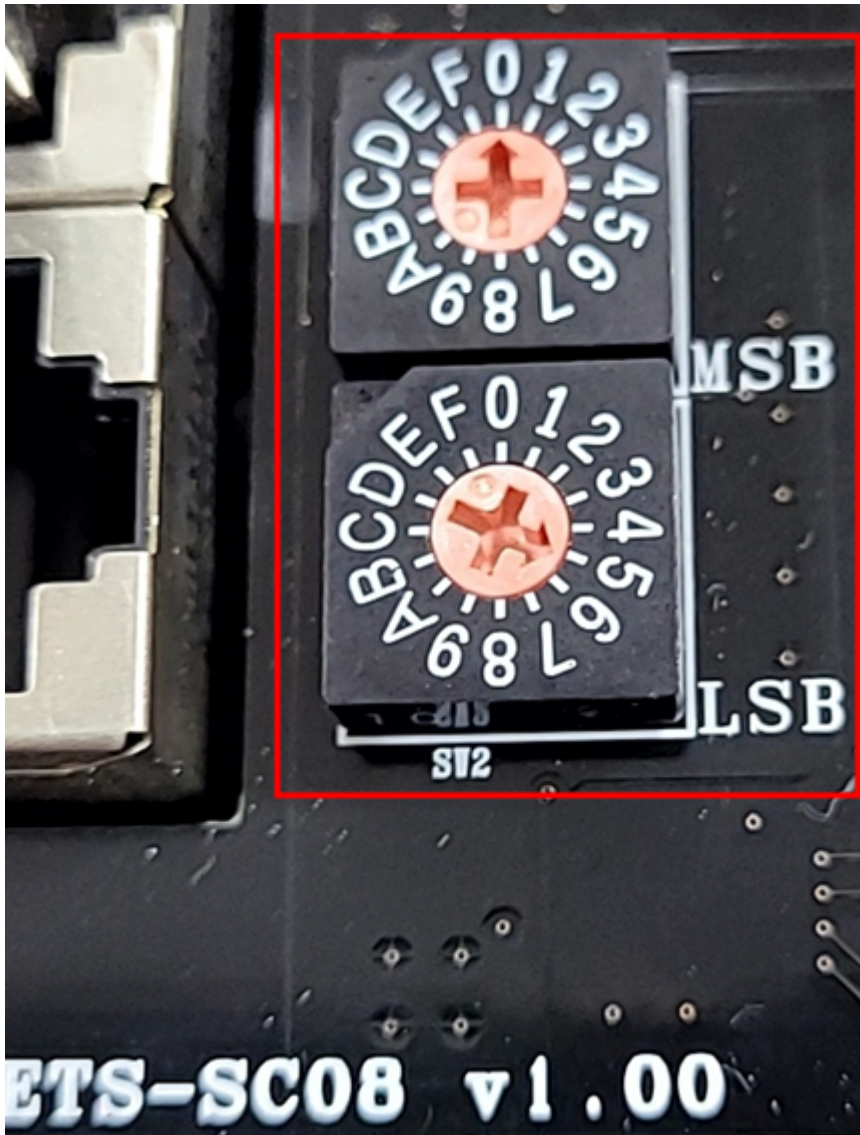
Serial Channel





- ComboBox Mapping
- Serial Channel
- { } (idx: { } [{ }] 1 0



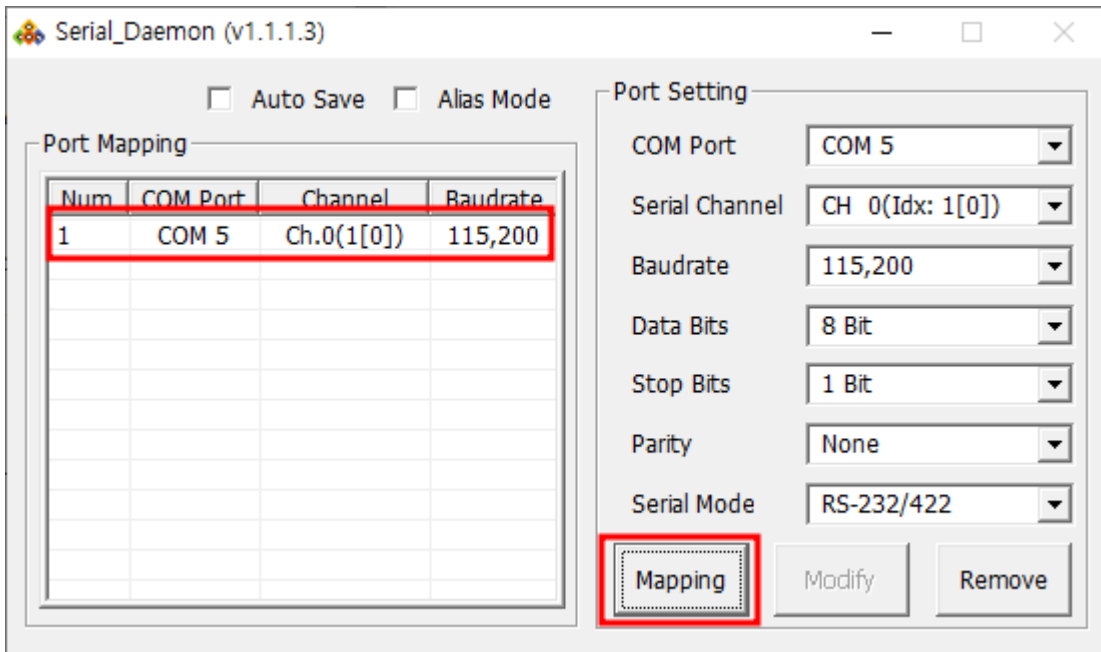


- Alias Serial Channel } (idx: { } [{
- { }]
- Physical Address가 5 0



-

Mapping



-

Mapping

Mapping

Mapping

Serial_Daemon (v1.1.1.3)

Auto Save Alias Mode

Port Mapping

Num	COM Port	Channel	Baudrate
1	COM 5	Ch.0(1[0])	115,200
2	COM 6	Ch.1(1[0])	115,200
3	COM10	Ch.2(1[0])	57,600
4	COM11	Ch.3(1[0])	57,600
5	COM12	Ch.4(1[0])	57,600

Port Setting

COM Port: COM12
Serial Channel: CH 4(Idx: 1[0])
Baudrate: 57,600
Data Bits: 8 Bit
Stop Bits: 1 Bit
Parity: None
Serial Mode: RS-485

Mapping Modify Remove

Serial_Daemon (v1.1.1.3)

Auto Save Alias Mode

Port Mapping

Num	COM Port	Channel	Baudrate
1	COM 5	Ch.0(5[0])	115,200
2	COM 6	Ch.1(5[0])	115,200
3	COM10	Ch.2(5[0])	57,600
4	COM11	Ch.3(5[0])	57,600

Port Setting

COM Port: COM12
Serial Channel: CH 4(Addr: 5[0])
Baudrate: 57,600
Data Bits: 8 Bit
Stop Bits: 1 Bit
Parity: None
Serial Mode: RS-485

Mapping Modify Remove

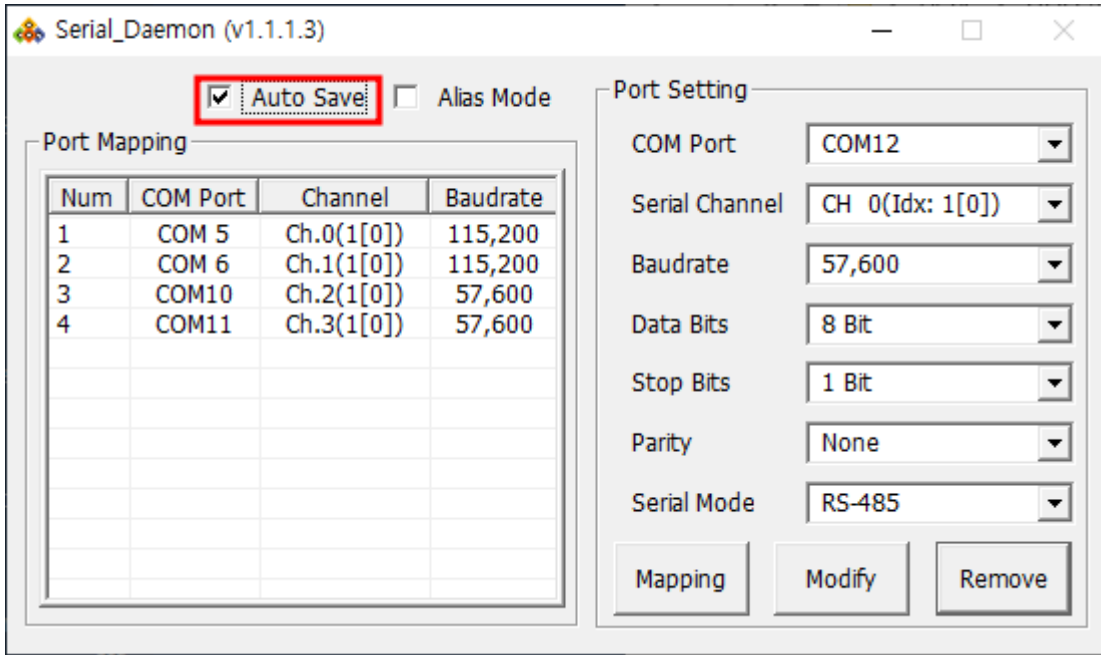
- Mapping **Remove**

Mapping

Serial_Daemon

매핑 정보를 저장 하시겠습니까?

예(Y) 아니요(N)



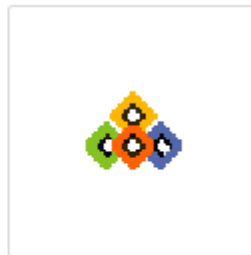
- Mapping
- Mapping
- Info.INI
- - **Auto Save**



Info.ini



LXUARTCON.dll



Serial_Daemon.exe

The screenshot shows the Serial_Daemon (v1.1.1.3) application window. At the top, there are checkboxes for "Auto Save" and "Alias Mode". The interface is divided into two main sections: "Port Mapping" and "Port Setting".

Port Mapping: A table with 4 columns: Num, COM Port, Channel, and Baudrate. It contains 4 rows of data.

Num	COM Port	Channel	Baudrate
1	COM 5	Ch.0(1[0])	115,200
2	COM 6	Ch.1(1[0])	115,200
3	COM10	Ch.2(1[0])	57,600
4	COM11	Ch.3(1[0])	57,600

Port Setting: A panel with several dropdown menus and buttons. The settings are: COM Port (COM 5), Serial Channel (CH 0(Idx: 1[0])), Baudrate (115,200), Data Bits (8 Bit), Stop Bits (1 Bit), Parity (None), and Serial Mode (RS-232/422). Below these are three buttons: "Mapping", "Modify", and "Remove".

• Info.ini Mapping 가

Mapping 가

Serial

ComMaster - Test Program for Serial Port

File Edit View Capture Help

[Received Data]

-----10-----20-----30-----40-----50

Com Port Setting

Baudrate 115200

Data Bits 8

Stop Bits 1

Parity None

Device COM5

RTS DTR

Clear Rx Format HEX Open Com Close Com

[Send Data]

Format	Send
HEX	Send
HEX	Send
HEX	Send
HEX	Send
HEX	Send
HEX	Send
HEX	Send

Send Counter 1 / 1 Interval 0 ms Add CR/LF

Ready CAP

• Serial Daemon Mapping Windows Serial EtherCAT
Slave 가 가 .

1)

ETS-SC08A

From: <http://comizoa.com/info/> - -

Permanent link: http://comizoa.com/info/doku.php?id=faq:downloadandsetup:serialdaemon:00_setup&rev=1677736426

Last update: 2024/07/08 18:22