

- Case 1 1
 - AddInfo 1
 - Cause 1
 - Solution 1
- Case 2 2
 - AddInfo 2
 - Cause 2
 - Solution 2

Driver IO가

× Home, EL +,- 가

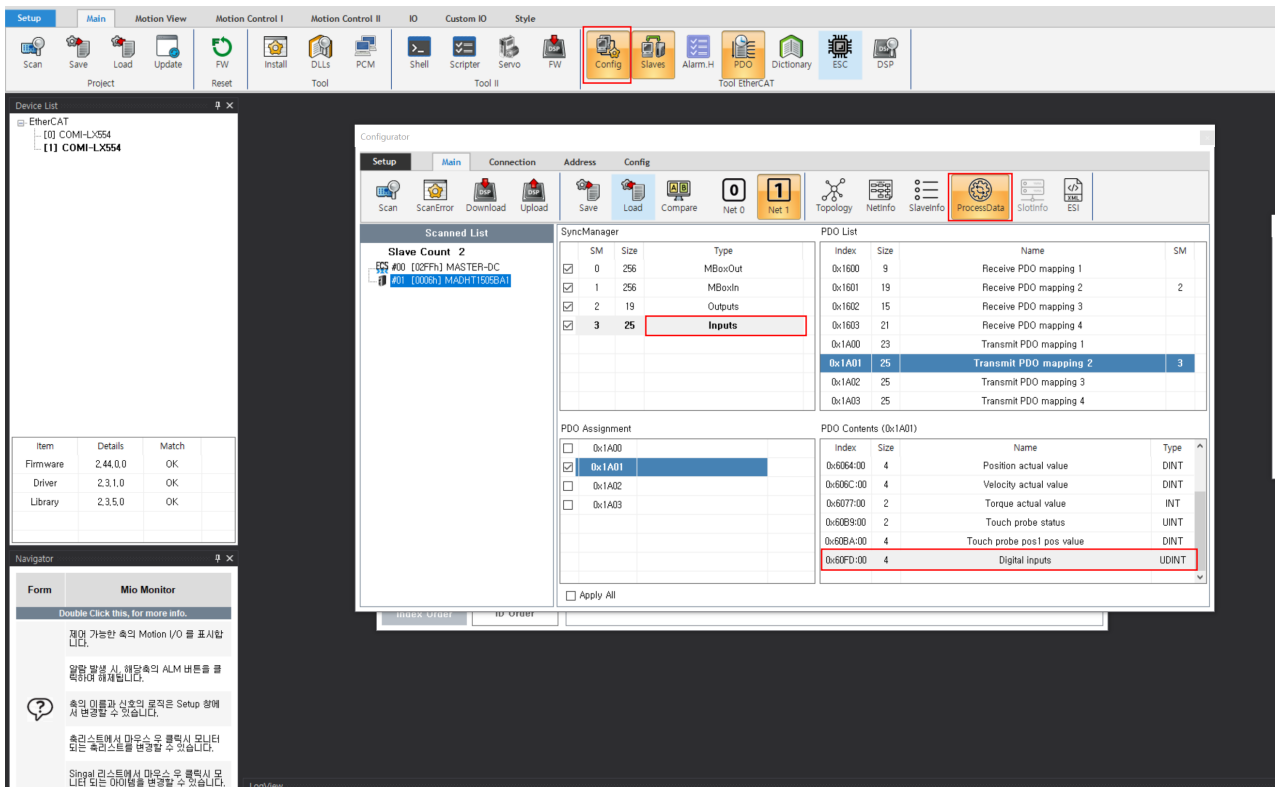
IDE 가

Case 1

AddInfo

- PDO DI

Cause



- [Config]→ Download ProcessData Inputs 'PDO Contents' "0x60FD Digital Input"

Solution

Case 2

AddInfo

- PDO Digital Input , DI

Cause

The screenshot shows the 'Tool EtherCAT' interface. The 'Slaves' tab is active. The tree view on the left shows the following structure:

- EtherCAT
 - Net 0
 - 00 : [FFFF] MASTER-DC
 - 01 : [0002] Ezi-SERVO2 EtherC
 - Net 1
 - 00 : [02FF] MASTER-DC
 - 01 : [0006] MADHT1505BA1

The right panel shows the 'CoE SDO' configuration for the selected slave:

| | |
|-----------------|--------|
| Index | 0x60FD |
| Sub Index | 0 |
| Size | 4 |
| Value | 0x0 |
| Digital(Signed) | 0 |

The 'Read' button is highlighted with a red box.

- [Slaves] 'CoE SDO' 가 'Digital Input' (Index : 0x60FD , SubIndex : 0, Size : 4) 'Read'
- Home, EL+, - ,

Solution

- ETS DO

ethercat, , ets,

From:

<http://comizoa.com/info/> - -

Permanent link:

http://comizoa.com/info/doku.php?id=faq:io:ethercat:02_driver_io_fail&rev=1669715114

Last update: **2024/07/08 18:22**