

- Case 1 1
 - Cause 1
 - Solution 1
- Case 2 1
 - Cause 1
 - Solution 2
- Case 3 2
 - Cause 2
 - Solution 3

Driver IO가

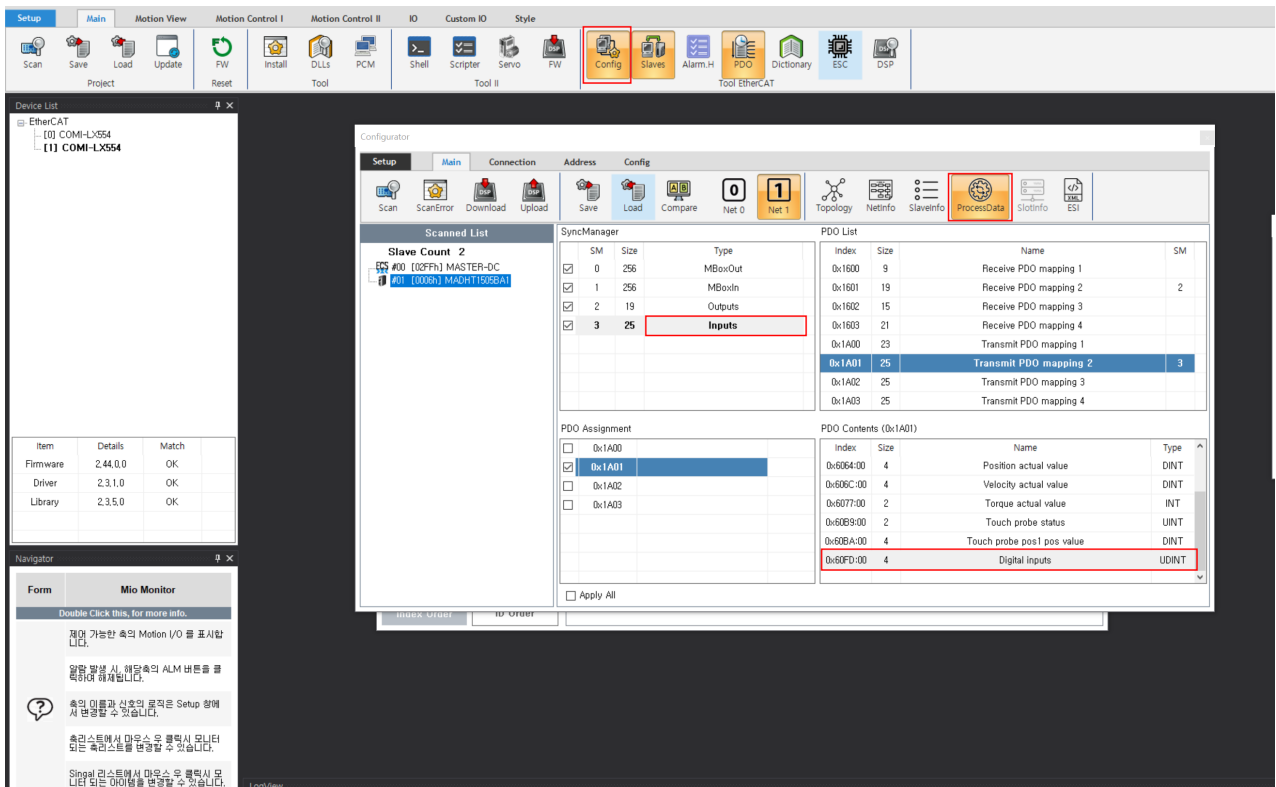
x Home, EL +,- 가

IDE 가

Case 1

Cause

- PDO DI



- [Config]→ Download ProcessData Inputs 'PDO Contents' "0x60FD Digital Input"

Solution

- , ESI

Case 2

Cause

* PDO Digital Input , DI

The screenshot shows the 'Tool EtherCAT' interface. At the top, there are icons for Config, Slaves, Alarm.H, PDO, Dictionary, ESC, and DSP. The 'Slaves' icon is highlighted with a red box. Below the icons, the 'Slave RW' window is open. It has tabs for EEPROM, CoE SDO, Register, and Update. The 'CoE SDO' tab is selected. On the left, a tree view shows the EtherCAT network structure: EtherCAT -> Net 0 -> 00 : [FFFF] MASTER-DC -> 01 : [0002] Ezi-SERVO2 EtherC; and EtherCAT -> Net 1 -> 00 : [02FF] MASTER-DC -> 01 : [0006] MADHT1505BA1. The selected node is '01 : [0006] MADHT1505BA1'. The right panel shows the SDO configuration: Index (0x60FD), Sub Index (0), Size (4), Value (0x0), and Signed (0). The 'Read' button is highlighted with a red box.

- [Slaves] 'CoE SDO' 가 'Digital Input' (Index : 0x60FD , SubIndex : 0, Size : 4) 'Read'
- Home, EL+, - ,

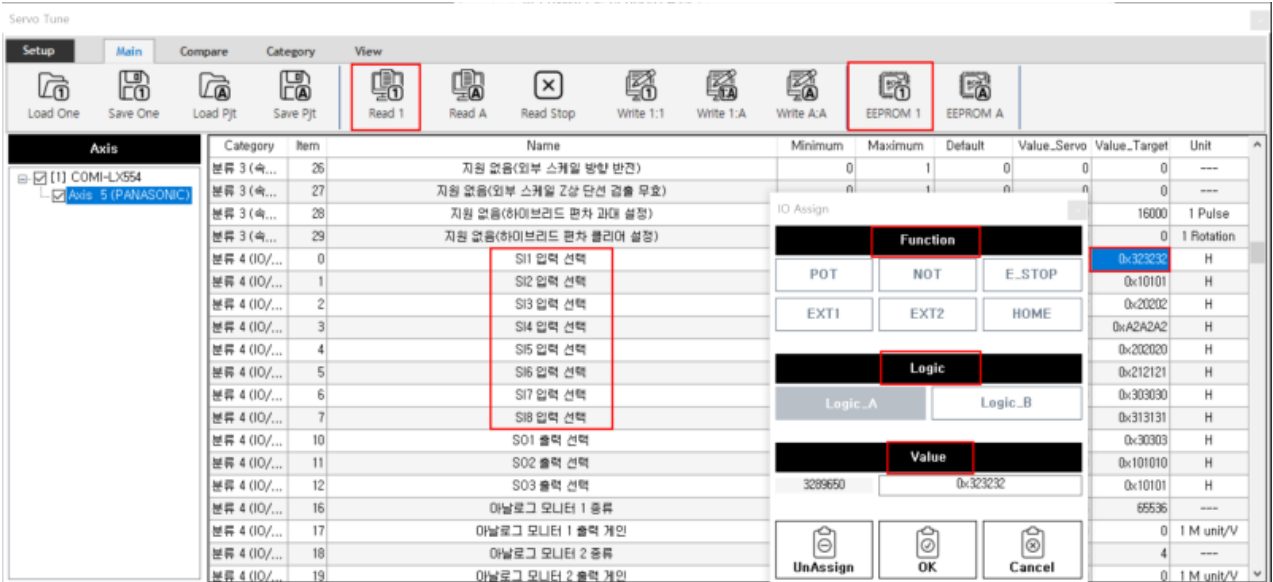
Solution

- . ()

Case 3

Cause

- IO Assign



- [Config]→ Download ProcessData Inputs 'PDO Contents' "0x60FD Digital Input"

Solution

- , ESI

From:

<http://comizoa.com/info/> - -

Permanent link:

http://comizoa.com/info/doku.php?id=faq:io:ethercat:02_driver_io_fail&rev=1669770241

Last update: **2024/07/08 18:22**