

..... 1

**1. Configurator Download Dictionary** ..... 1

**2. SDO Torque Limit** ..... 1

× (Torque Limit)

# 1. Configurator Download Dictionary

The screenshot shows the ComiIDE (v1.6.4.0) interface. The 'Configurator' window is active, displaying a 'Scanned List' with two slave devices:

- #00 [02FFh] MASTER-DC
- #01 [0005h] SGD7S-xxxxA0x CoE

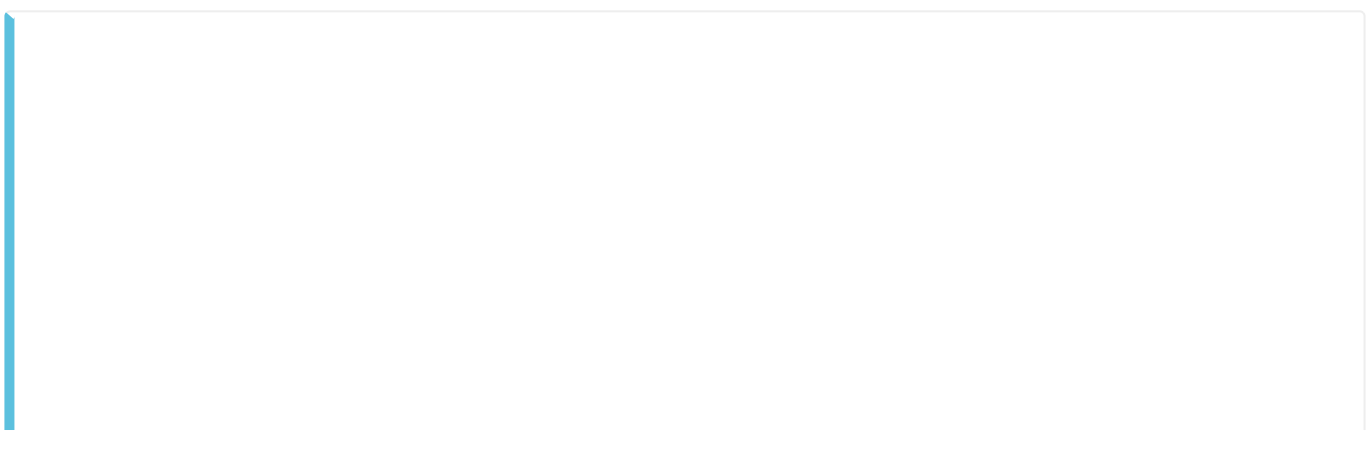
Each device is represented by a block diagram showing a 'Master' and a 'Servo' connected. The 'Cycle Time' section shows parameters like RoundTrip, Set, Current, Max, Average, ProcessCycle, App, and Net.

At the bottom, the 'LogView' window shows a list of log entries:

Time	Channel	Code	Command	Info
13:02:07.110	EtherCAT	-183	ecSlv_ReadCoe...	ecERR_IMPROPER_AL_STATE (AL-STATE가 적절하지 않은 경우) (netID = 0, slaveP...
13:02:07.110	EtherCAT	-183	ecSlv_ReadCoe...	ecERR_IMPROPER_AL_STATE (AL-STATE가 적절하지 않은 경우) (netID = 0, slaveP...
13:02:07.110	EtherCAT	-183	ecSlv_ReadCoe...	ecERR_IMPROPER_AL_STATE (AL-STATE가 적절하지 않은 경우) (netID = 0, slaveP...
13:02:07.111	EtherCAT	-183	ecSlv_ReadCoe...	ecERR_IMPROPER_AL_STATE (AL-STATE가 적절하지 않은 경우) (netID = 0, slaveP...
13:02:07.111	EtherCAT	-183	ecSlv_ReadCoe...	ecERR_IMPROPER_AL_STATE (AL-STATE가 적절하지 않은 경우) (netID = 0, slaveP...

Navigation instructions: • Config→ Download Main Dictionary

# 2. SDO Torque Limit



Object Dictionary

Index	Name	Type	Size	Value	Value_Hex	Flags
0x609A	Homing acceleration	UDINT	4	0	0x0000	rw RT
0x60A4	Profile jerk	DT60A4	6	0	0x0	ro
0x60B1	Velocity Offset	DINT	4	0	0x0000	rw RT
0x60B2	Torque Offset	INT	2	0	0x00	rw RT
0x60B8	Touch probe function	UINT	2	0	0x00	rw RT
0x60B9	Touch probe status	UINT	2	0	0x00	ro T
0x60BA	Touch probe 1 position value	DINT	4	0	0x0000	ro T
0x60BC	Touch probe 2 position value	DINT	4	0	0x0000	ro T
0x60C1	Interpolation data record	DT60C1	6	0	0x0	ro
0x60C2	Interpolation time period	DT60C2	4	0	0x0	ro
0x60E0	Positive Torque Limit Value	UINT	2	0	0x00	rw RT
0x60E1	Negative Torque Limit Value	UINT	2	0	0x00	rw RT
0x60E4	Additional Position Actual Value	DT60E4	6	0	0x0	ro
0x60F2	Positioning option code	UINT	2	0	0x00	rw R
0x60F4	Following error actual value	DINT	4	0	0x0000	ro T
0x60FC	Position demand internal value	DINT	4	0	0x0000	ro T
0x60FD	Digital inputs	UDINT	4	0	0x0000	ro T
0x60FE	Digital outputs	DT60FE	10	0	0x0	ro
0x60FF	Target velocity	DINT	4	0	0x0000	rw RT
0x6502	Supported drive modes	UDINT	4	0	0x0000	ro
0x60C0	Interpolation sub mode select	INT	2	0	0x00	rw
0x2730	Interpolation data configuration for 1st pr	DT2730	18	0	0x0	ro
0x2731	Interpolation data configuration for 2nd pr	DT2731	18	0	0x0	ro
0x2732	Interpolation profile select	USINT	1	0	0x0	rw RT

LogView

Time	Channel	Code	Command	Info
13:05:31.691	EtherCAT	-183	ecSlv_ReadCoe...	ecERR_IMPROPER_AL_STATE (AL-STATE가 적절하지 않은 경우) (netID = 0, slaveP...
13:05:31.691	EtherCAT	-183	ecSlv_ReadCoe...	ecERR_IMPROPER_AL_STATE (AL-STATE가 적절하지 않은 경우) (netID = 0, slaveP...
13:05:31.692	EtherCAT	-183	ecSlv_ReadCoe...	ecERR_IMPROPER_AL_STATE (AL-STATE가 적절하지 않은 경우) (netID = 0, slaveP...
13:05:31.692	EtherCAT	-183	ecSlv_ReadCoe...	ecERR_IMPROPER_AL_STATE (AL-STATE가 적절하지 않은 경우) (netID = 0, slaveP...
13:05:31.692	EtherCAT	-183	ecSlv_ReadCoe...	ecERR_IMPROPER_AL_STATE (AL-STATE가 적절하지 않은 경우) (netID = 0, slaveP...

- SDO Torque Limit

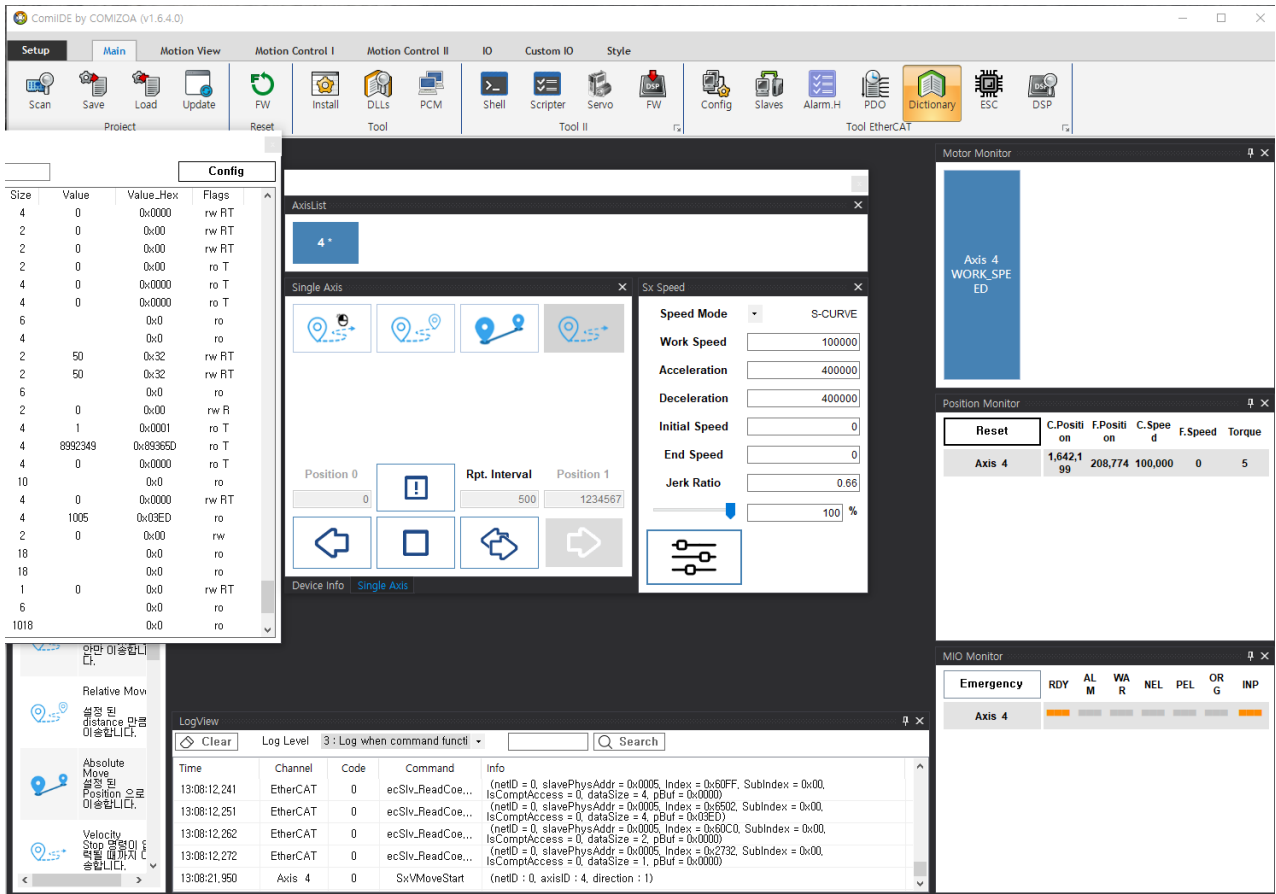
Object Dictionary

Index	Name	Type	Size	Value	Value_Hex	Flags
0x609A	Homing acceleration	UDINT	4	0	0x0000	rw RT
0x60A4	Profile jerk	DT60A4	6	0	0x0	ro
0x60B1	Velocity Offset	DINT	4	0	0x0000	rw RT
0x60B2	Torque Offset	INT	2	0	0x00	rw RT
0x60B8	Touch probe function	UINT	2	0	0x00	rw RT
0x60B9	Touch probe status	UINT	2	0	0x00	ro T
0x60BA	Touch probe 1 position value	DINT	4	0	0x0000	ro T
0x60BC	Touch probe 2 position value	DINT	4	0	0x0000	ro T
0x60C1	Interpolation data record	DT60C1	6	0	0x0	ro
0x60C2	Interpolation time period	DT60C2	4	0	0x0	ro
0x60E0	Positive Torque Limit Value	UINT	2	0	0x00	rw RT
0x60E1	Negative Torque Limit Value	UINT	2	0	0x00	rw RT
0x60E4	Additional Position Actual Value	DT60E4	6	0	0x0	ro
0x60F2	Positioning option code	UINT	2	0	0x00	rw R
0x60F4	Following error actual value	DINT	4	0	0x0000	ro T
0x60FC	Position demand internal value	DINT	4	0	0x0000	ro T
0x60FD	Digital inputs	UDINT	4	0	0x0000	ro T
0x60FE	Digital outputs	DT60FE	10	0	0x0	ro
0x60FF	Target velocity	DINT	4	0	0x0000	rw RT
0x6502	Supported drive modes	UDINT	4	0	0x0000	ro
0x60C0	Interpolation sub mode select	INT	2	0	0x00	rw
0x2730	Interpolation data configuration for 1st pr	DT2730	18	0	0x0	ro
0x2731	Interpolation data configuration for 2nd pr	DT2731	18	0	0x0	ro
0x2732	Interpolation profile select	USINT	1	0	0x0	rw RT

LogView

Time	Channel	Code	Command	Info
13:06:32.775	EtherCAT	-183	ecSlv_ReadCoe...	ecERR_IMPROPER_AL_STATE (AL-STATE가 적절하지 않은 경우) (netID = 0, slaveP...
13:06:32.775	EtherCAT	-183	ecSlv_ReadCoe...	ecERR_IMPROPER_AL_STATE (AL-STATE가 적절하지 않은 경우) (netID = 0, slaveP...
13:06:32.775	EtherCAT	-183	ecSlv_ReadCoe...	ecERR_IMPROPER_AL_STATE (AL-STATE가 적절하지 않은 경우) (netID = 0, slaveP...
13:06:32.775	EtherCAT	-183	ecSlv_ReadCoe...	ecERR_IMPROPER_AL_STATE (AL-STATE가 적절하지 않은 경우) (netID = 0, slaveP...
13:06:32.775	EtherCAT	-183	ecSlv_ReadCoe...	ecERR_IMPROPER_AL_STATE (AL-STATE가 적절하지 않은 경우) (netID = 0, slaveP...

1. Value .
2. Value enter.



\* 가 Limit

\* Torque Limit

. (Ex: Torque Limit = Maximum Current)

From: <http://comizoa.com/info/> - -

Permanent link: [http://comizoa.com/info/doku.php?id=faq:motion:ethercat:07\\_torque\\_limit\\_setup&rev=1659500723](http://comizoa.com/info/doku.php?id=faq:motion:ethercat:07_torque_limit_setup&rev=1659500723)

Last update: 2024/07/08 18:22