

..... 1

1. Configurator Download Dictionary 1

2. SDO Torque Limit 1

× (Torque Limit)

[]

1. Configurator Download Dictionary

The screenshot shows the ComilIDE (v1.6.4.0) interface. The 'Configurator' window is active, displaying a network diagram with a '02FF Master' and a '0005 Servo'. The toolbar at the top includes icons for 'Config', 'Slaves', 'Alarm.H', 'PDO', 'Dictionary' (highlighted with a red box), 'ESC', and 'DSP'. The 'Motor Monitor' window on the right shows 'Axis 4 INITIAL'. The 'Position Monitor' window displays a table with columns: Reset, C.Pos, F.Pos, C.Spd, F.Spd, Torq. The 'MIO Monitor' window shows an 'Emergency' status for 'Axis 4'.

• Config→ Download Main Dictionary

2. SDO Torque Limit

The screenshot displays the ComiIDE interface for configuring an EtherCAT device. The 'Object Dictionary' window is open, showing a list of parameters. The parameter '0x60E0 Positive Torque Limit Value' is highlighted with a red box. The 'LogView' window at the bottom shows a series of error messages: 'ecERR_IMPROPER_AL_STATE (AL-STATE가 적절하지 않은 경우) (netID = 0, slaveP...)'.

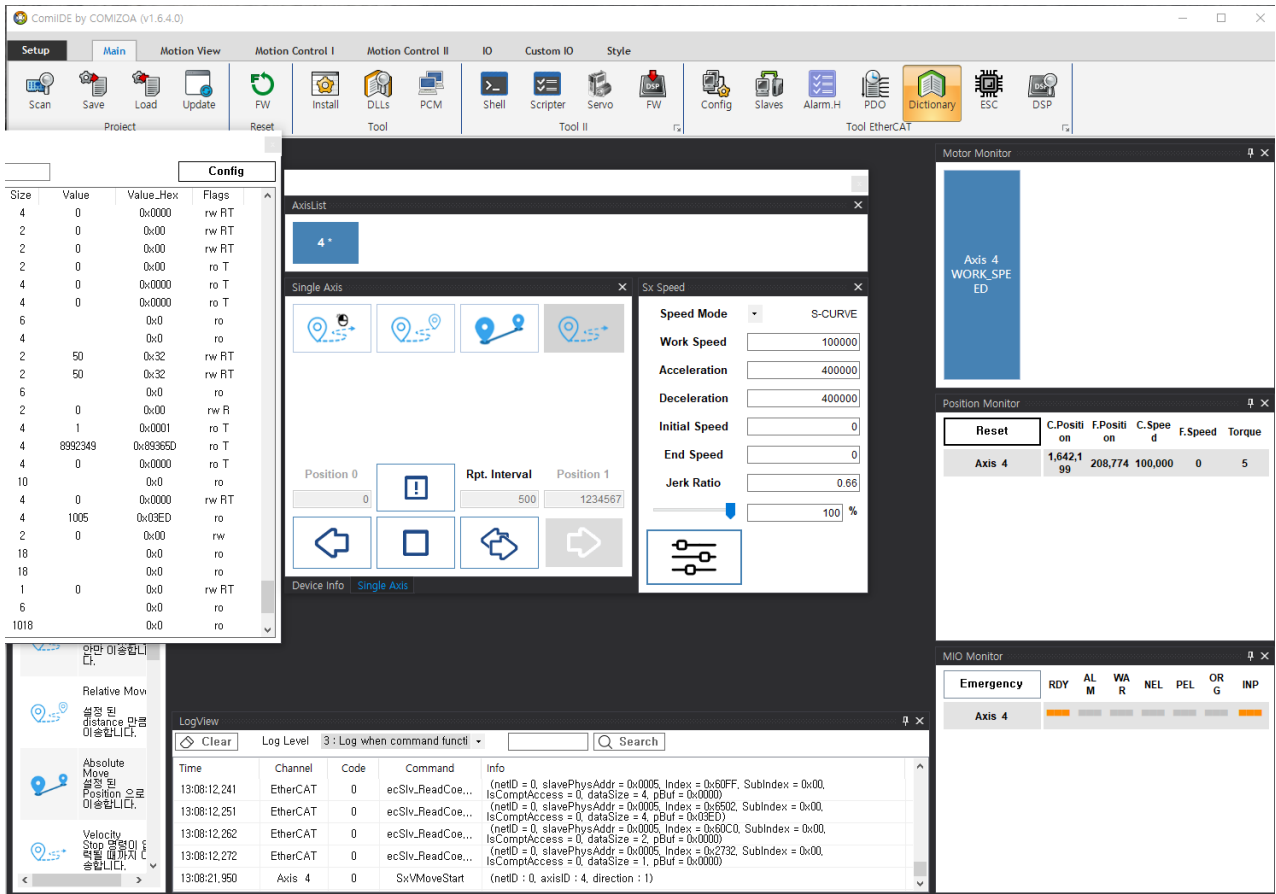
Index	Name	Type	Size	Value	Value_Hex	Flags
0x609A	Homing acceleration	UDINT	4	0	0x0000	rw RT
0x60A4	Profile jerk	DT60A4	6	0x0	0x0	ro
0x60B1	Velocity Offset	DINT	4	0	0x0000	rw RT
0x60B2	Torque Offset	INT	2	0	0x00	rw RT
0x60B8	Touch probe function	UINT	2	0	0x00	rw RT
0x60B9	Touch probe status	UINT	2	0	0x00	ro T
0x60BA	Touch probe 1 position value	DINT	4	0	0x0000	ro T
0x60BC	Touch probe 2 position value	DINT	4	0	0x0000	ro T
0x60C1	Interpolation data record	DT60C1	6	0x0	0x0	ro
0x60C2	Interpolation time period	DT60C2	4	0x0	0x0	ro
0x60E0	Positive Torque Limit Value	UINT	2	0	0x00	rw RT
0x60E1	Negative Torque Limit Value	UINT	2	0	0x00	rw RT
0x60E4	Additional Position Actual Value	DT60E4	6	0x0	0x0	ro
0x60F2	Positioning option code	UINT	2	0	0x00	rw R
0x60F4	Following error actual value	DINT	4	0	0x0000	ro T
0x60FC	Position demand internal value	DINT	4	0	0x0000	ro T
0x60FD	Digital inputs	UDINT	4	0	0x0000	ro T
0x60FE	Digital outputs	DT60FE	10	0x0	0x0	ro
0x60FF	Target velocity	DINT	4	0	0x0000	rw RT
0x6502	Supported drive modes	UDINT	4	0	0x0000	ro
0x60C0	Interpolation sub mode select	INT	2	0	0x00	rw
0x2730	Interpolation data configuration for 1st pr	DT2730	18	0x0	0x0	ro
0x2731	Interpolation data configuration for 2nd pr	DT2731	18	0x0	0x0	ro
0x2732	Interpolation profile select	USINT	1	0	0x0	rw RT

- SDO Torque Limit

This screenshot is similar to the one above, but the '0x60E0 Positive Torque Limit Value' parameter is highlighted in blue. The 'LogView' window shows a series of error messages: 'ecERR_IMPROPER_AL_STATE (AL-STATE가 적절하지 않은 경우) (netID = 0, slaveP...)'.

Index	Name	Type	Size	Value	Value_Hex	Flags
0x609A	Homing acceleration	UDINT	4	0	0x0000	rw RT
0x60A4	Profile jerk	DT60A4	6	0x0	0x0	ro
0x60B1	Velocity Offset	DINT	4	0	0x0000	rw RT
0x60B2	Torque Offset	INT	2	0	0x00	rw RT
0x60B8	Touch probe function	UINT	2	0	0x00	rw RT
0x60B9	Touch probe status	UINT	2	0	0x00	ro T
0x60BA	Touch probe 1 position value	DINT	4	0	0x0000	ro T
0x60BC	Touch probe 2 position value	DINT	4	0	0x0000	ro T
0x60C1	Interpolation data record	DT60C1	6	0x0	0x0	ro
0x60C2	Interpolation time period	DT60C2	4	0x0	0x0	ro
0x60E0	Positive Torque Limit Value	UINT	2	0	0x00	rw RT
0x60E1	Negative Torque Limit Value	UINT	2	0	0x00	rw RT
0x60E4	Additional Position Actual Value	DT60E4	6	0x0	0x0	ro
0x60F2	Positioning option code	UINT	2	0	0x00	rw R
0x60F4	Following error actual value	DINT	4	0	0x0000	ro T
0x60FC	Position demand internal value	DINT	4	0	0x0000	ro T
0x60FD	Digital inputs	UDINT	4	0	0x0000	ro T
0x60FE	Digital outputs	DT60FE	10	0x0	0x0	ro
0x60FF	Target velocity	DINT	4	0	0x0000	rw RT
0x6502	Supported drive modes	UDINT	4	0	0x0000	ro
0x60C0	Interpolation sub mode select	INT	2	0	0x00	rw
0x2730	Interpolation data configuration for 1st pr	DT2730	18	0x0	0x0	ro
0x2731	Interpolation data configuration for 2nd pr	DT2731	18	0x0	0x0	ro
0x2732	Interpolation profile select	USINT	1	0	0x0	rw RT

- 1. Value .
- 2. Value enter.



* 가 Limit

* Torque Limit

. (Ex: Torque Limit = Maximum Current)

From: <http://comizoa.com/info/> - -

Permanent link: http://comizoa.com/info/doku.php?id=faq:motion:ethercat:07_torque_limit_setup&rev=1659500819

Last update: 2024/07/08 18:22