

..... 1

1. Configurator Download Dictionary 1

2. SDO Torque Limit 1

× (Torque Limit)

[]

1. Configurator Download Dictionary

The screenshot shows the ComilIDE (v1.6.4.0) interface. The 'Configurator' window is active, displaying a network diagram with a Master (02FF) and a Servo (0005). The toolbar at the top includes icons for Scan, Save, Load, Update, FW, Install, DLLs, PCM, Shell, Scripter, Servo, FW, Config, Slaves, Alarm.H, PDO, Dictionary (highlighted with a red box), ESC, and DSP. The 'Motor Monitor' window shows 'Axis 4 INITIAL'. The 'Position Monitor' window displays a table with columns: Reset, C.Pos, F.Pos, C.Spd, F.Spd, Torq. The 'MIO Monitor' window shows an 'Emergency' status for Axis 4.

• Config→ Download Main Dictionary

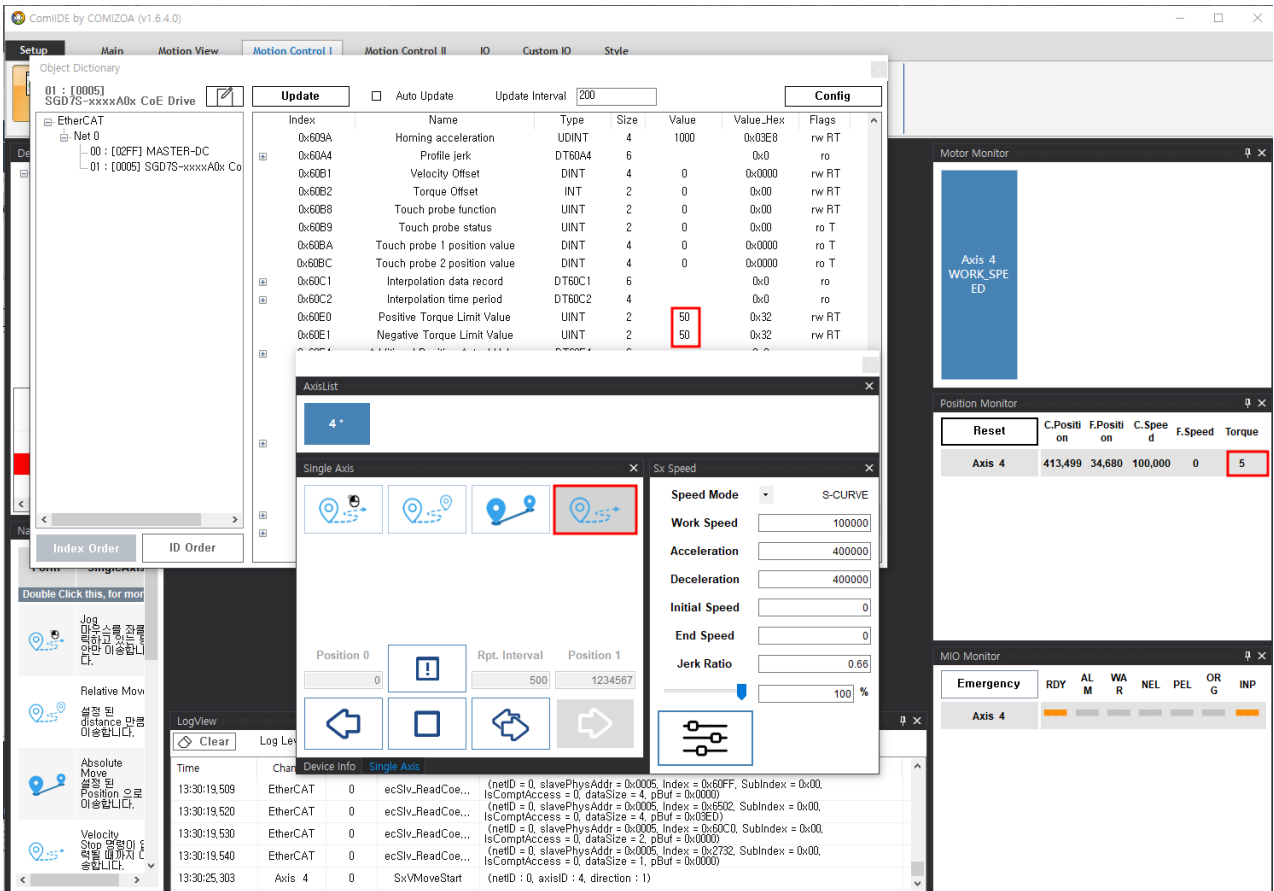
2. SDO Torque Limit

The screenshot shows the ComiIDE software interface. The main window displays the Object Dictionary for an EtherCAT device. The 'Update' tab is active, and the 'Positive Torque Limit Value' parameter (Index 0x60E0) is highlighted with a red box. The LogView window at the bottom shows a series of error messages: 'ecERR_IMPROPER_AL_STATE (AL-STATE가 적절하지 않은 경우) (netID = 0, slaveP...'. The interface includes various toolbars for navigation and configuration, and a sidebar with project management options.

- SDO Torque Limit

This screenshot is similar to the one above, showing the ComiIDE software interface. In this instance, the 'Negative Torque Limit Value' parameter (Index 0x60E1) is highlighted with a blue selection bar. The LogView window continues to show error messages: 'ecERR_IMPROPER_AL_STATE (AL-STATE가 적절하지 않은 경우) (netID = 0, slaveP...'. The interface elements, including toolbars and sidebars, are consistent with the previous screenshot.

1. Value .
2. Value enter.



Velocity , 가 Limit

* Torque Limit

Torque Limit

. (Ex: = Maximum Current)

From:

<http://comizoa.com/info/> - -

Permanent link:

http://comizoa.com/info/doku.php?id=faq:motion:ethercat:07_torque_limit_setup&rev=1659507987

Last update: 2024/07/08 18:22