

SercureBoot	.....	1
SercureBoot	1 : Windows PowerShell	1
SercureBoot	2 : CMD	2
SercureBoot	: AMI BIOS	3
SercureBoot	: MainBoard	6

# SecureBoot

x SecureBoot

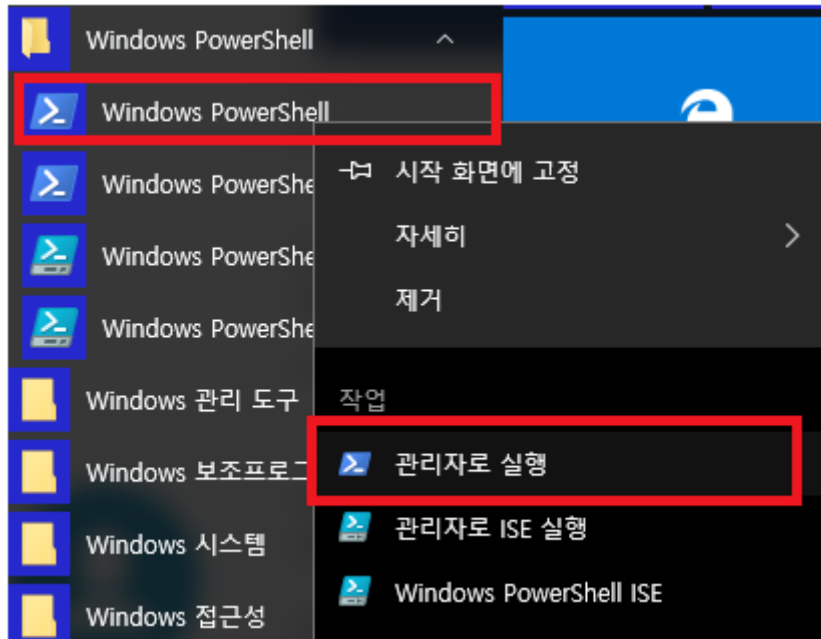
## SercureBoot

- SecureBoot , OS
- SecureBoot가 Enable 가 가

## SercureBoot

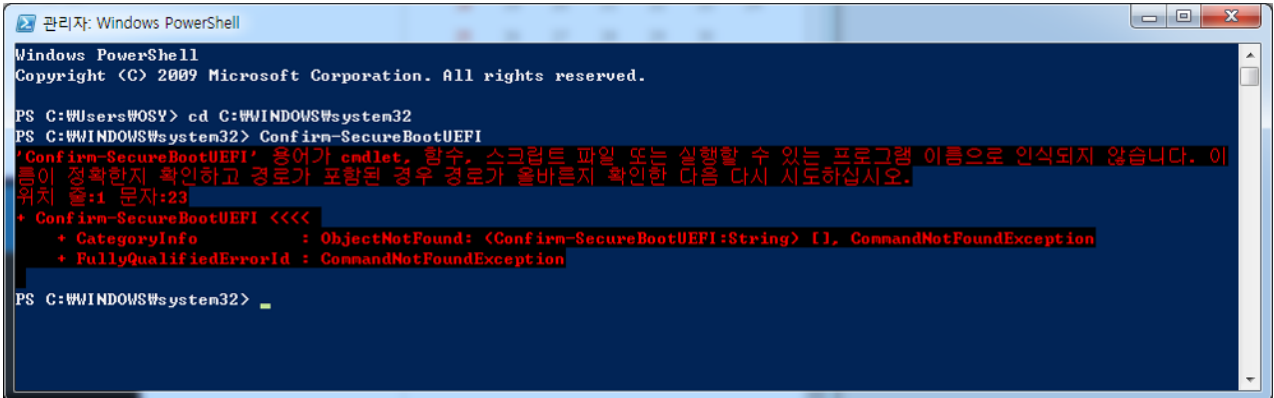
### 1 : Windows PowerShell

- Windows PowerShell



- 가 system32가 system32
- Confirm-SecureBootUEFI

```
cd C:\WINDOWS\system32
Confirm-SecureBootUEFI
```



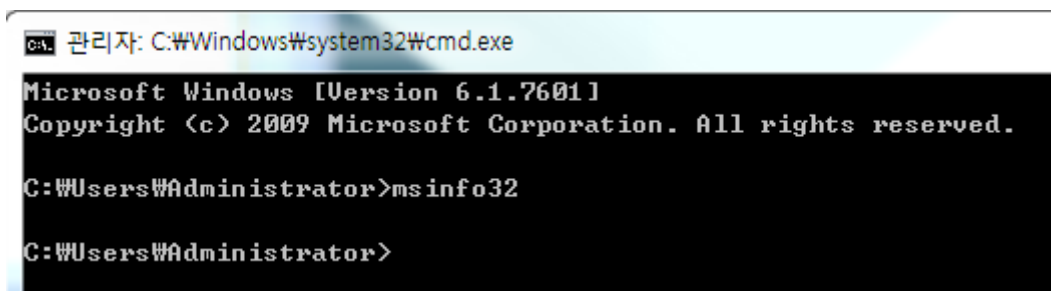
- 가 BIOS가 UEFI  
SecureBoot True False .

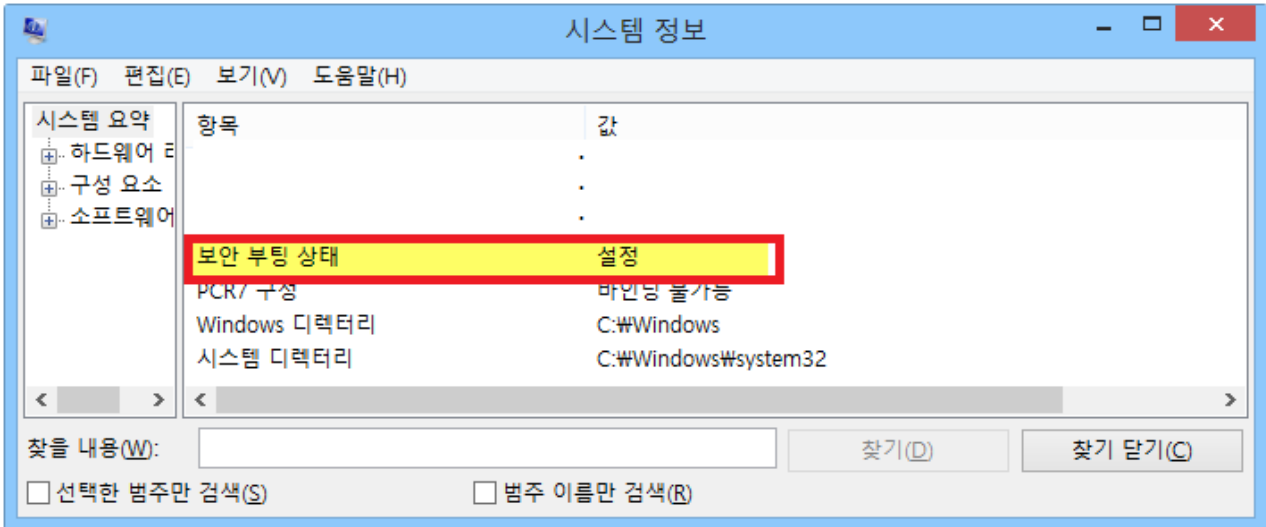
```
UEFI / Secure Boot Enable : True
```

```
UEFI / Secure Boot Enable : False
```

## SercureBoot 2 : CMD

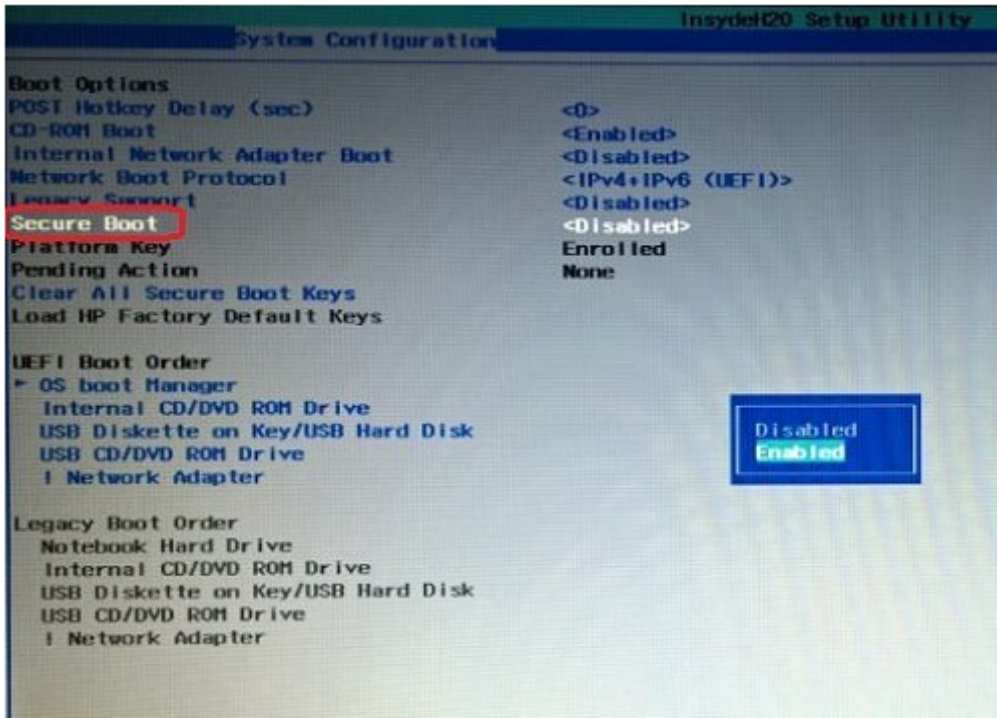
- CMD msinfo32 , system32



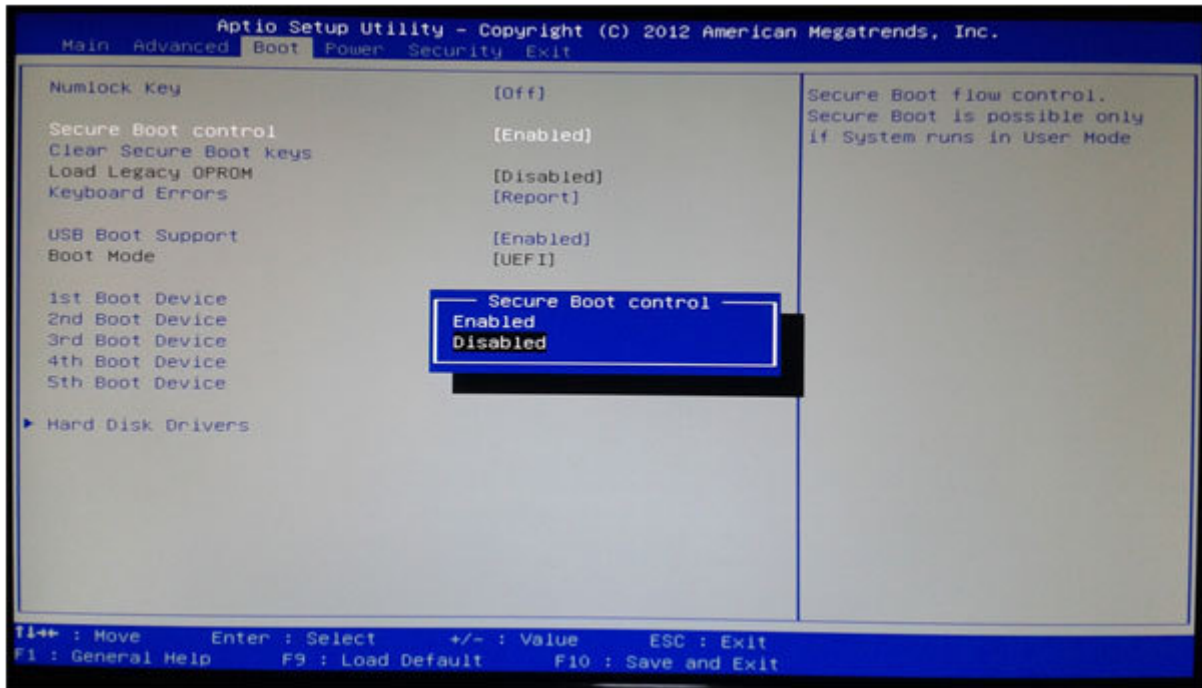


## SercureBoot : AMI BIOS

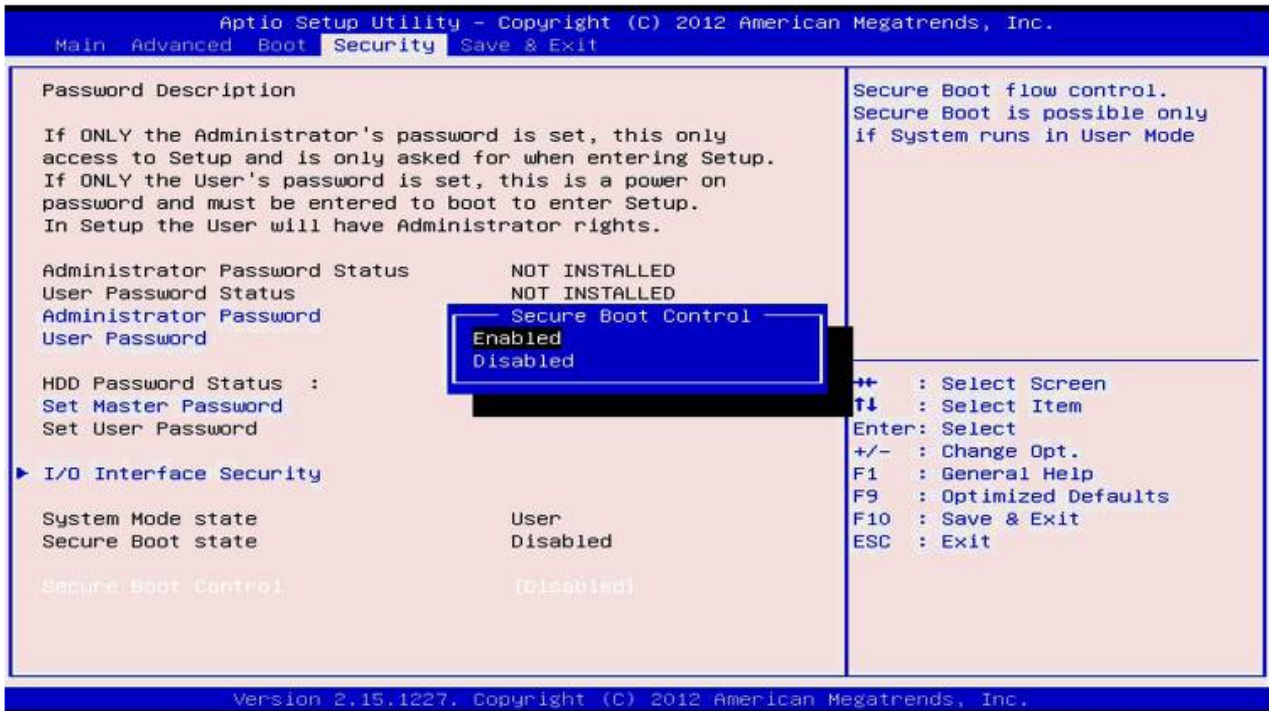
- Case 1



• case 2



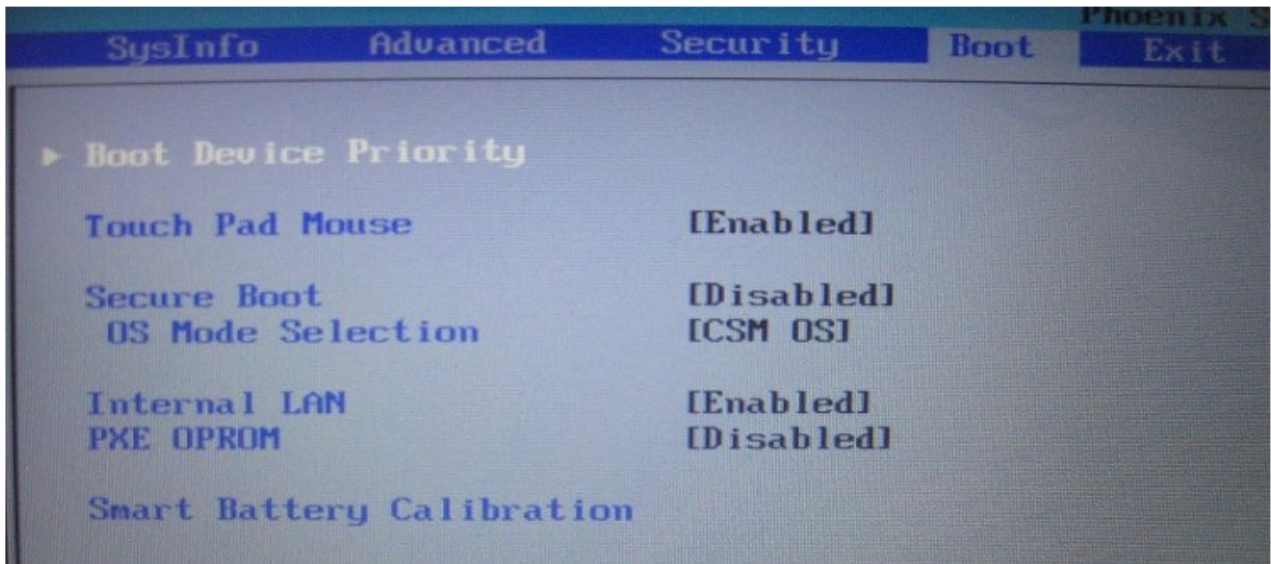
• case 3



- case 4

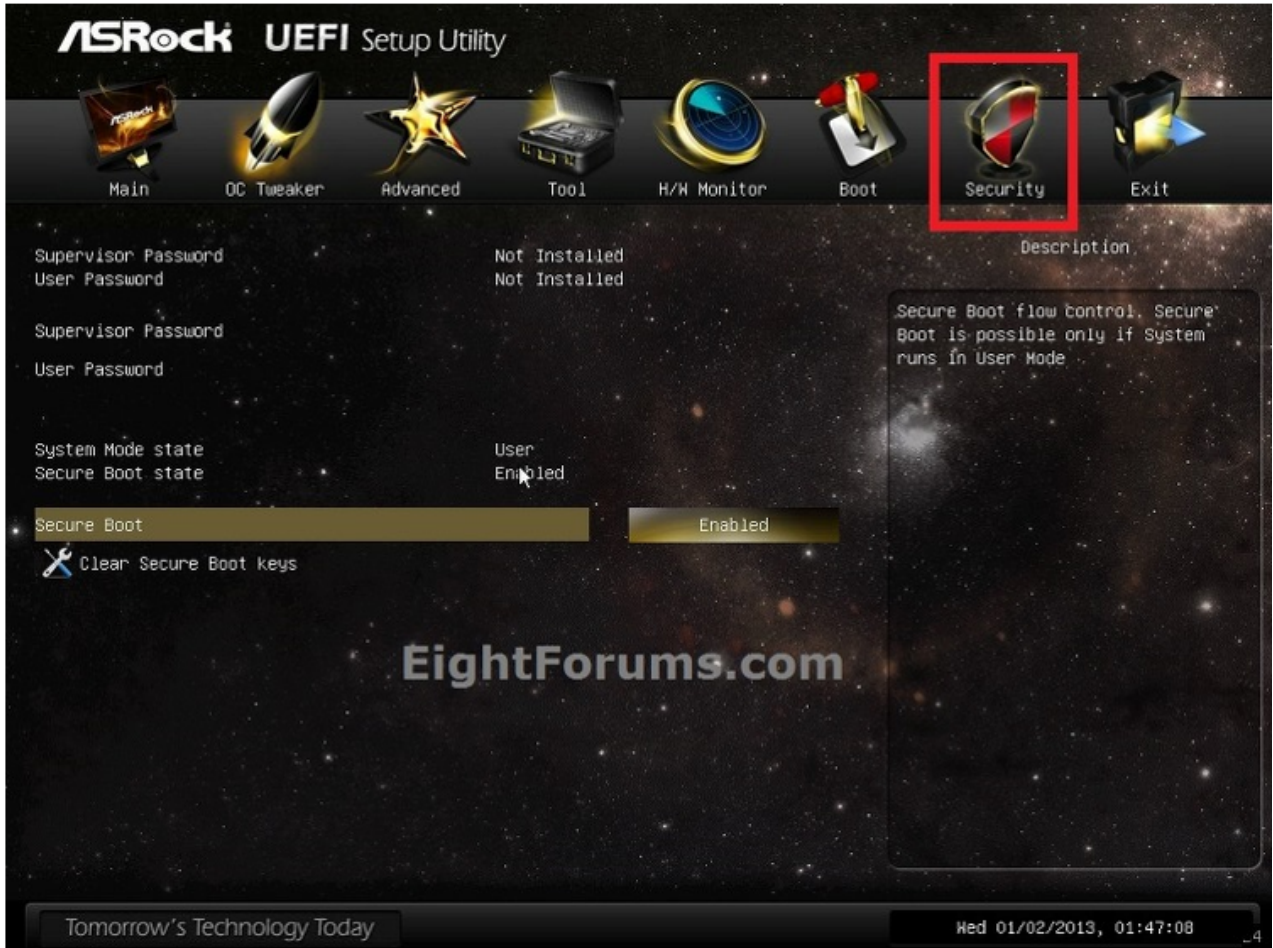


- case 5

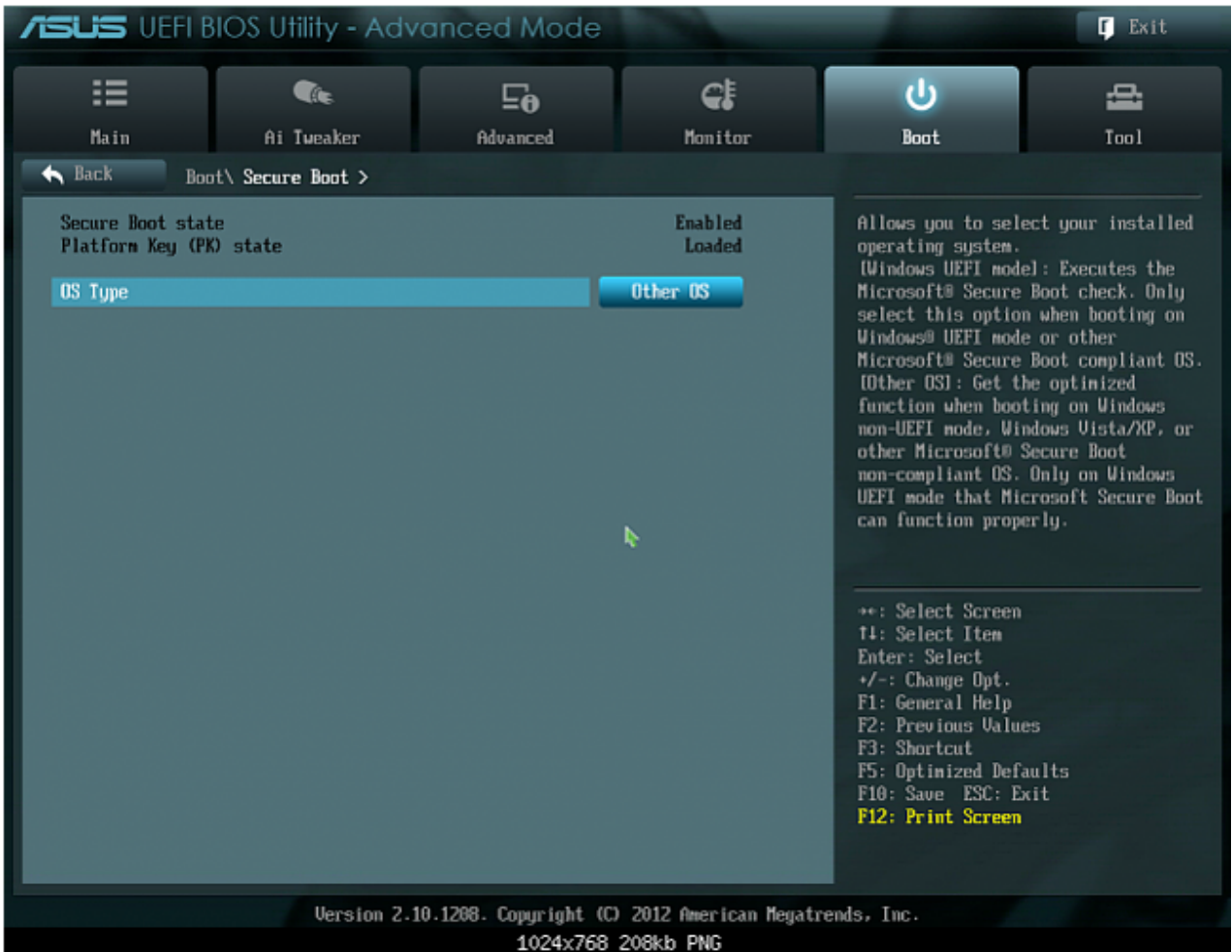


## SercureBoot : MainBoard

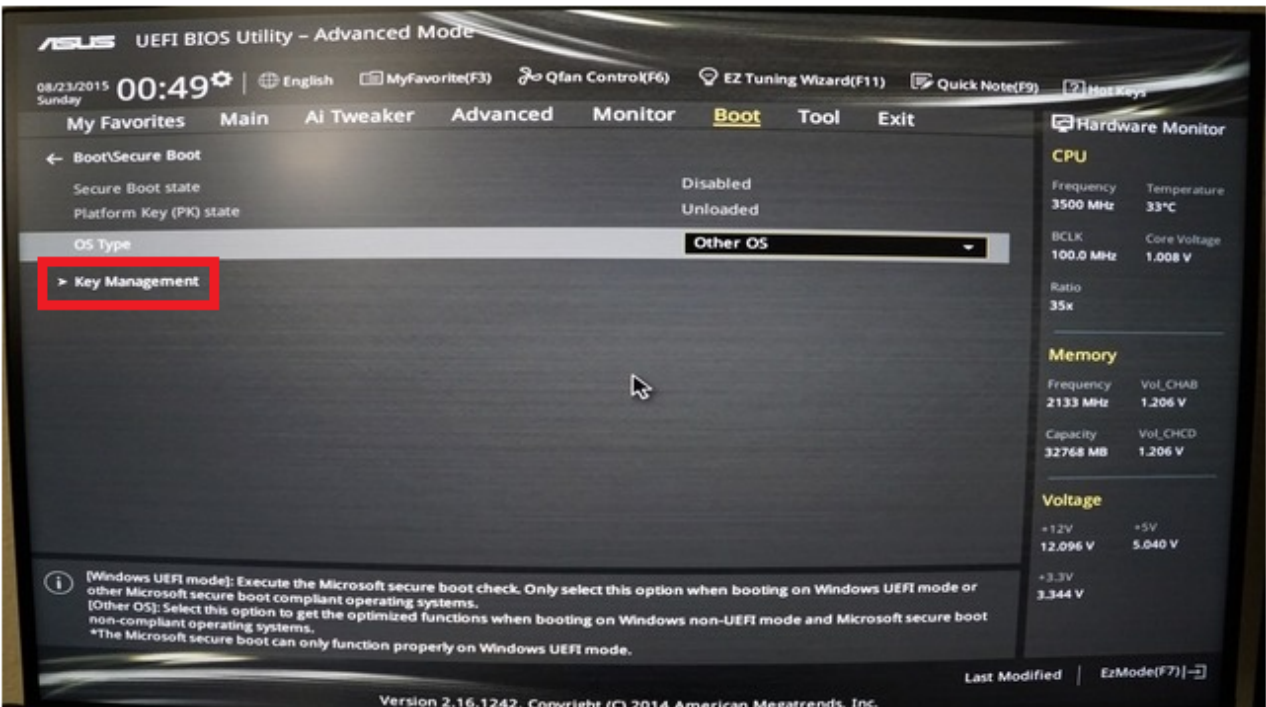
- Asrock



- Asus



- OS Type Other OS



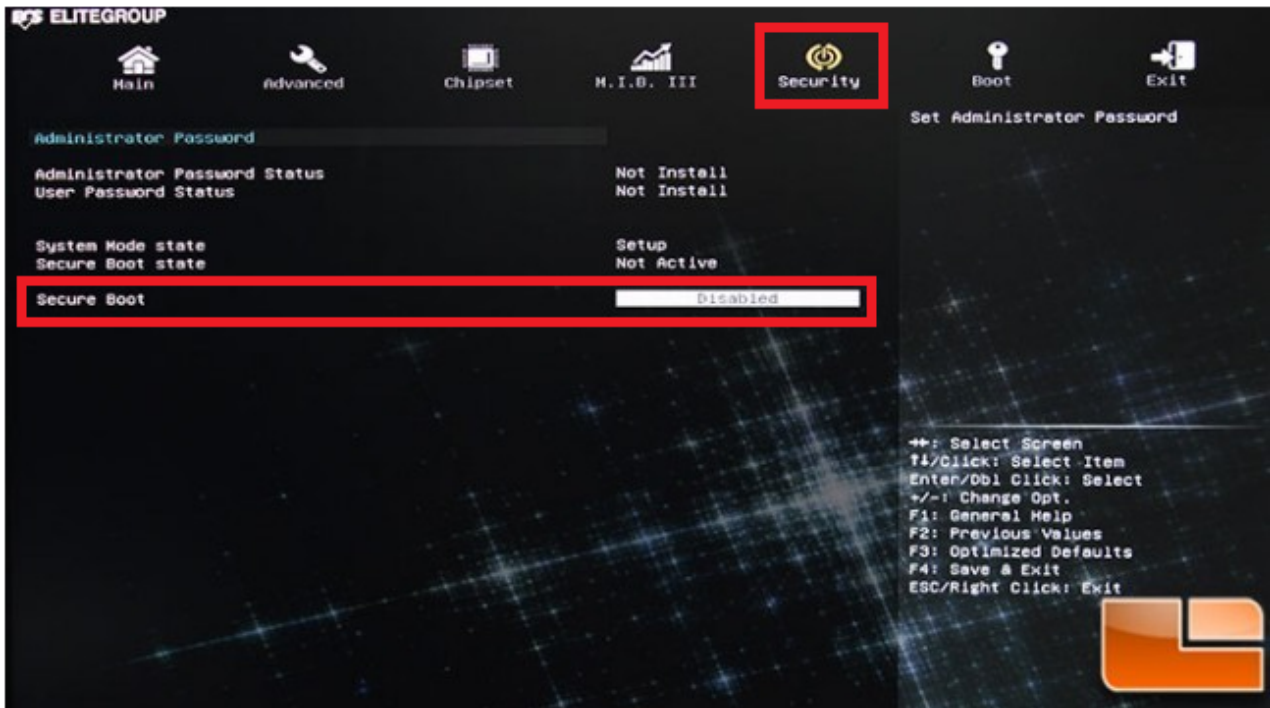


- Key Management가 Secure Boot

• GIGABYTE



• ECS



• MSI

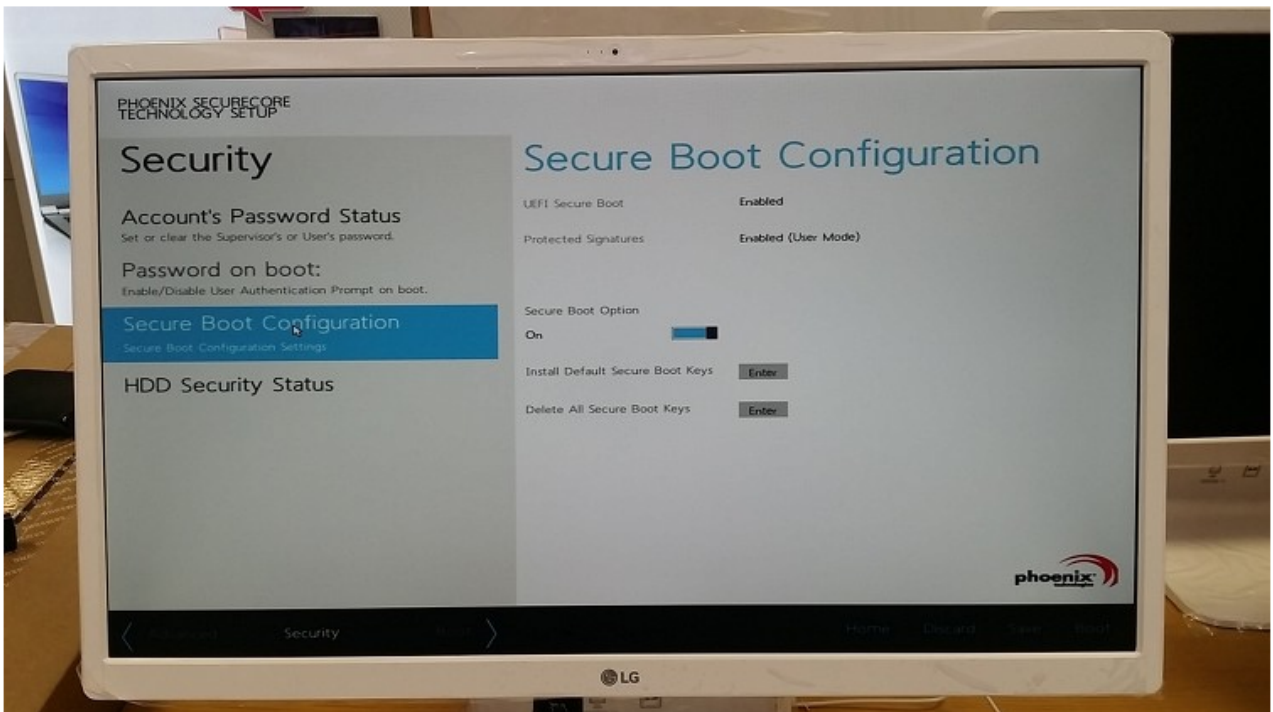


Settings ≡ Advanced ≡ Windows8/8.1 Configuration ≡ Secure Boot 에 있는 것 같다.

• SAMSUNG



- LG



From:

<http://comizoa.com/info/> - -

Permanent link:

<http://comizoa.com/info/doku.php?id=platform:common:support:secureboot&rev=1544500433>

Last update: **2024/07/08 18:22**