

SercureBoot ..... 1

SercureBoot     1 : Windows PowerShell ..... 1

SercureBoot     2 : CMD ..... 2

SercureBoot     : AMI BIOS ..... 3

SercureBoot     : MainBoard ..... 6

# SecureBoot

x SecureBoot

**SecureBoot**

- SecureBoot , , OS
- SecureBoot가 Enable 가 가

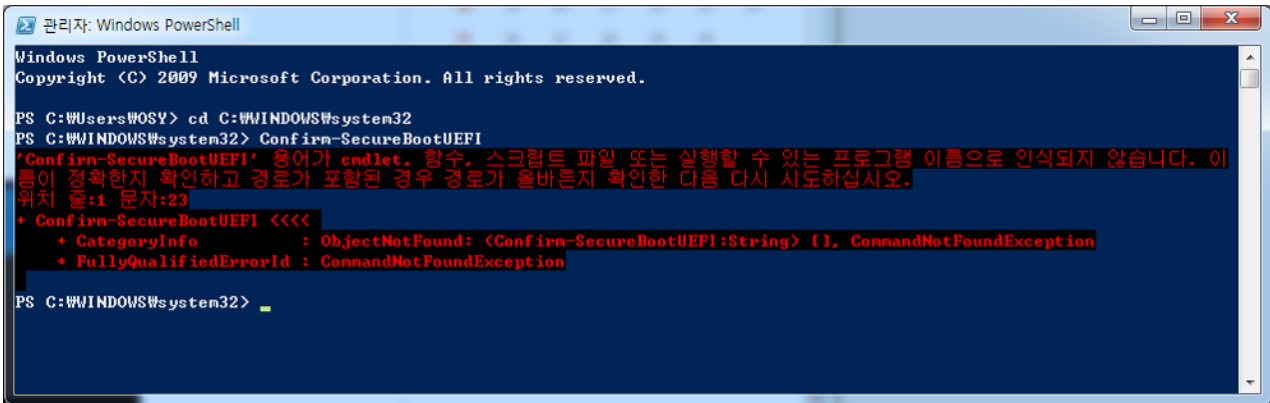
**SecureBoot 1 : Windows PowerShell**

- Windows PowerShell

- 가 system32가 system32
- Confirm-SecureBootUEFI

```
cd C:\WINDOWS\system32
```

### Confirm-SecureBootUEFI



- 가 BIOS가 UEFI  
SecureBoot True False .

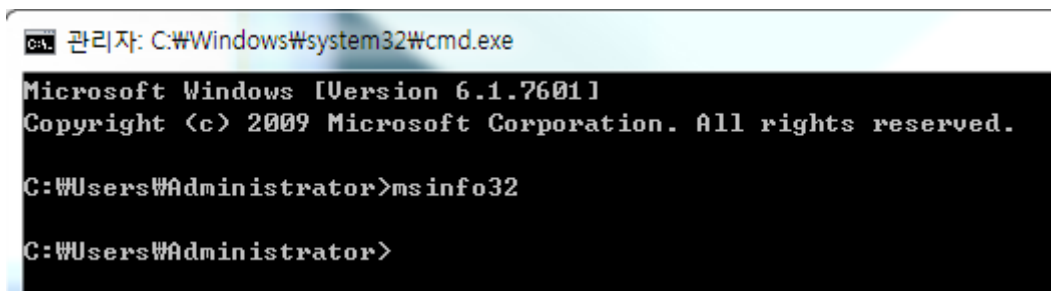
UEFI / Secure Boot Enable : True

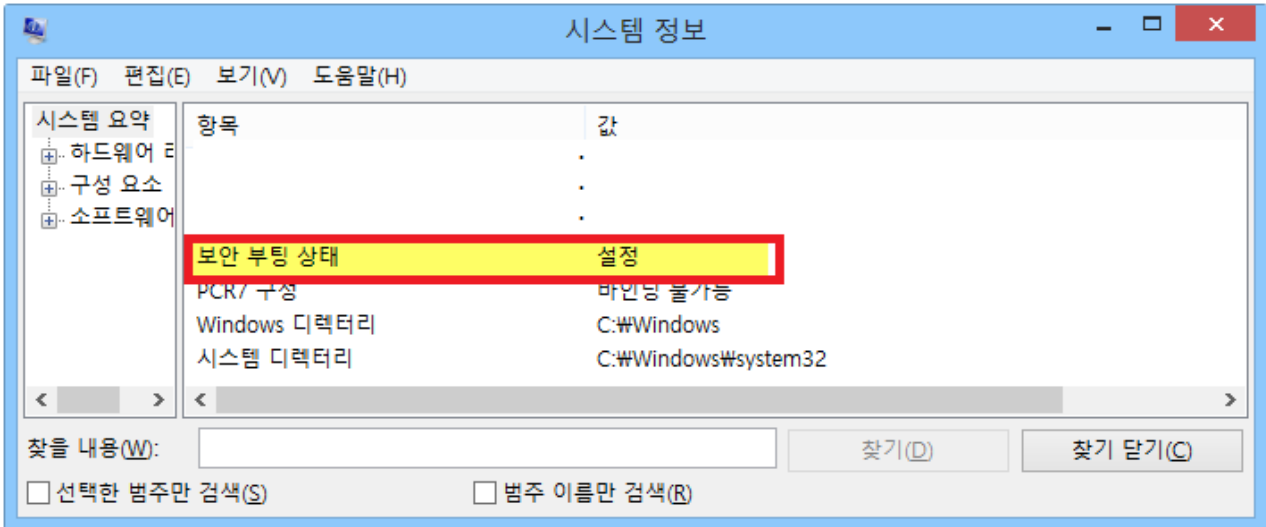
UEFI / Secure Boot Enable : False

### SercureBoot

### 2 : CMD

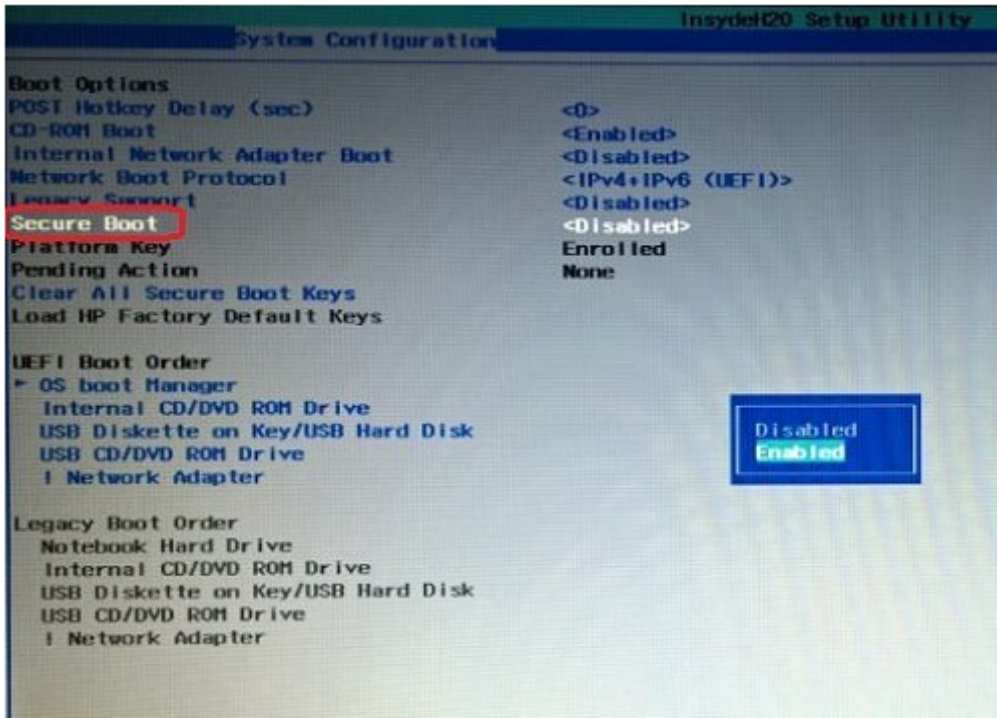
- CMD
  - msinfo32 , system32



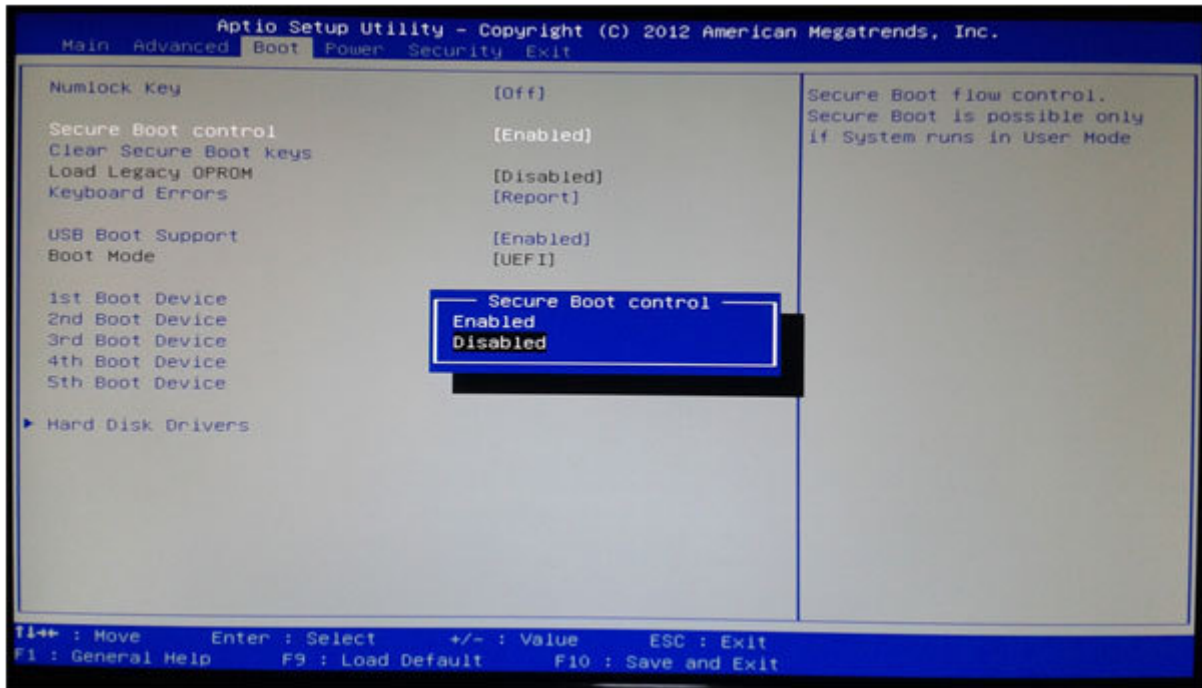


### SercureBoot : AMI BIOS

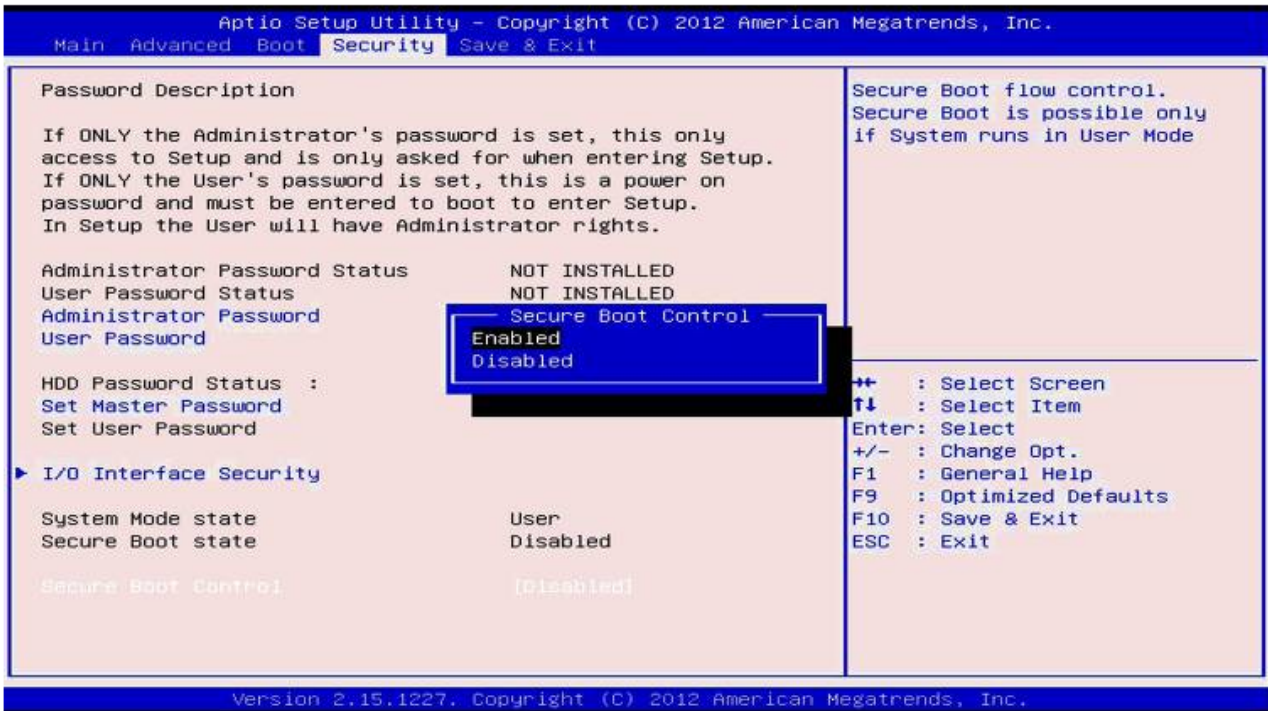
- Case 1



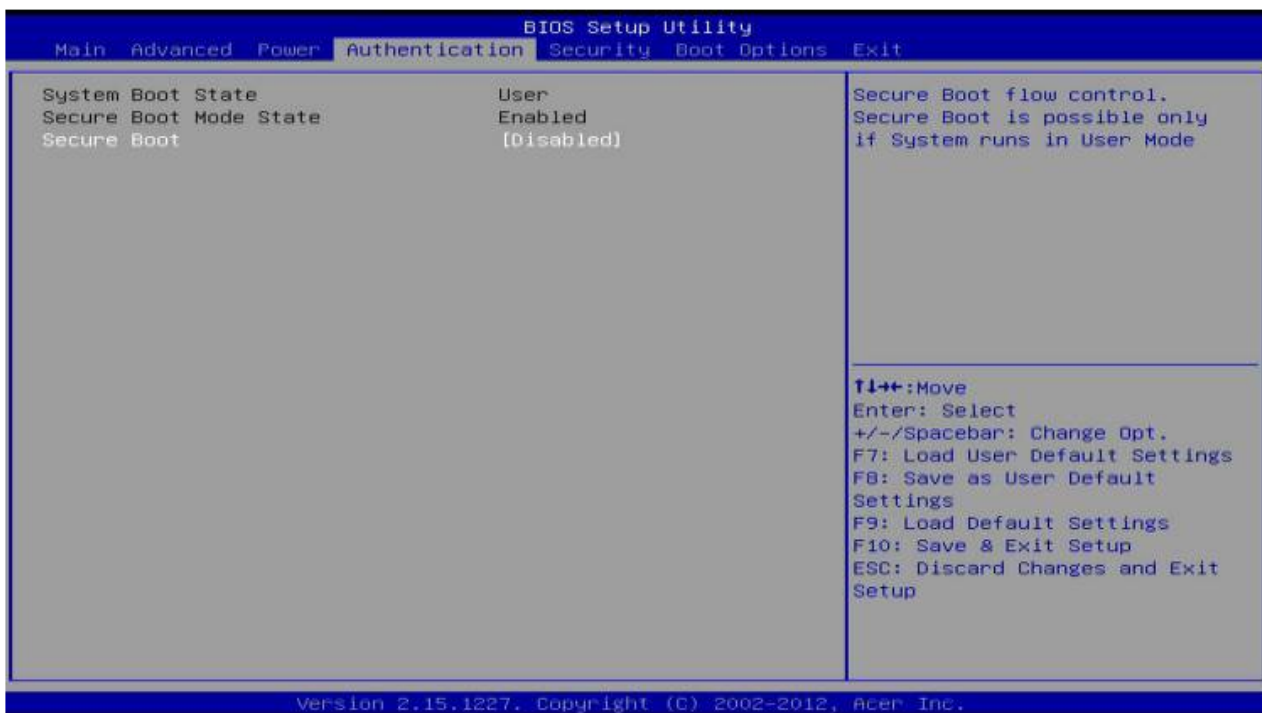
• case 2



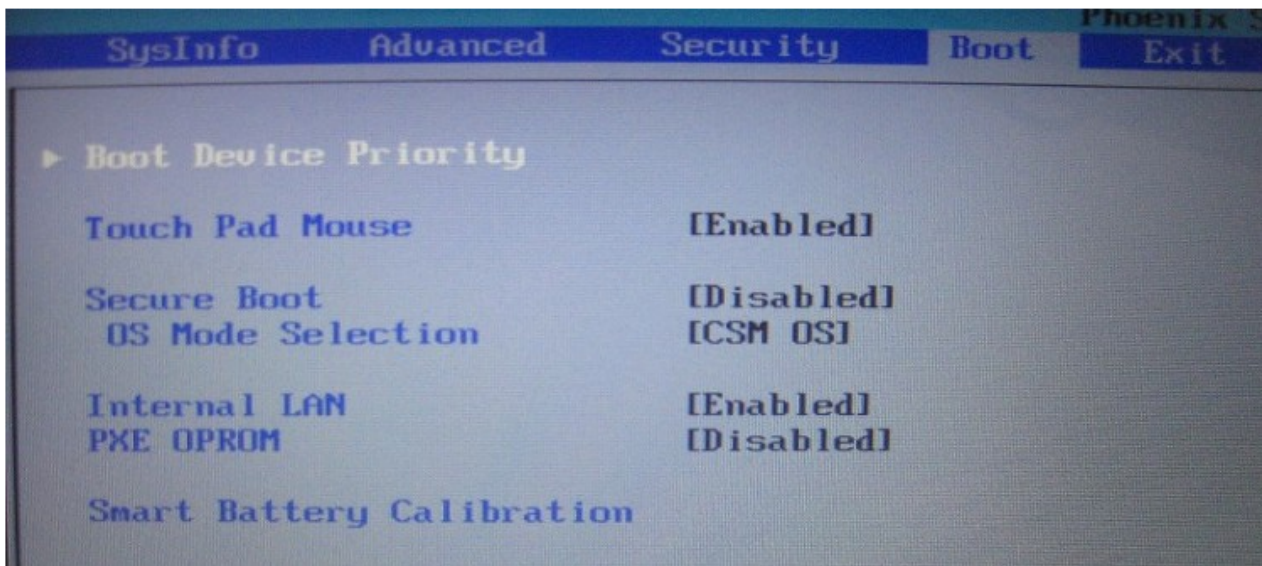
• case 3



- case 4

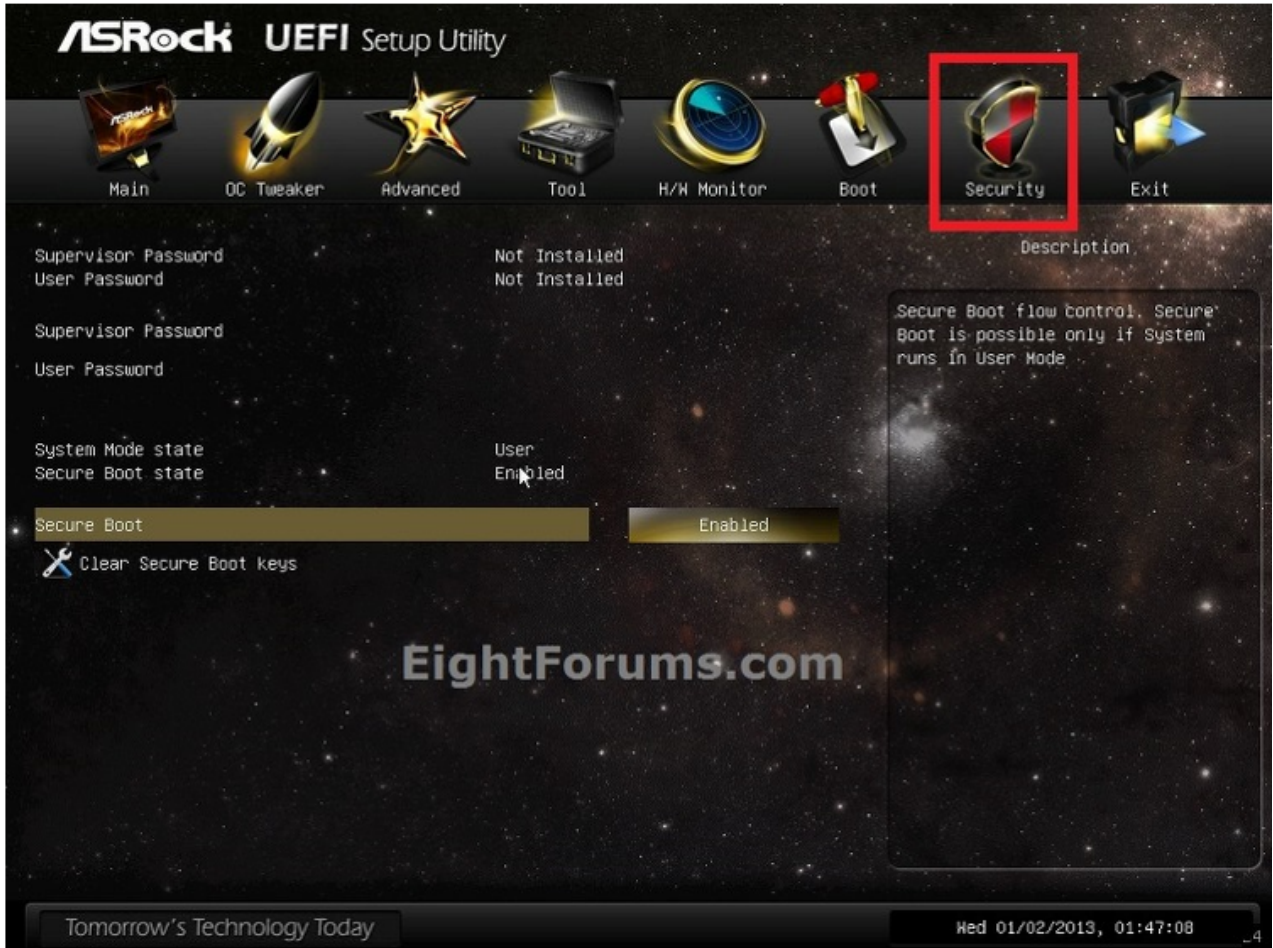


- case 5

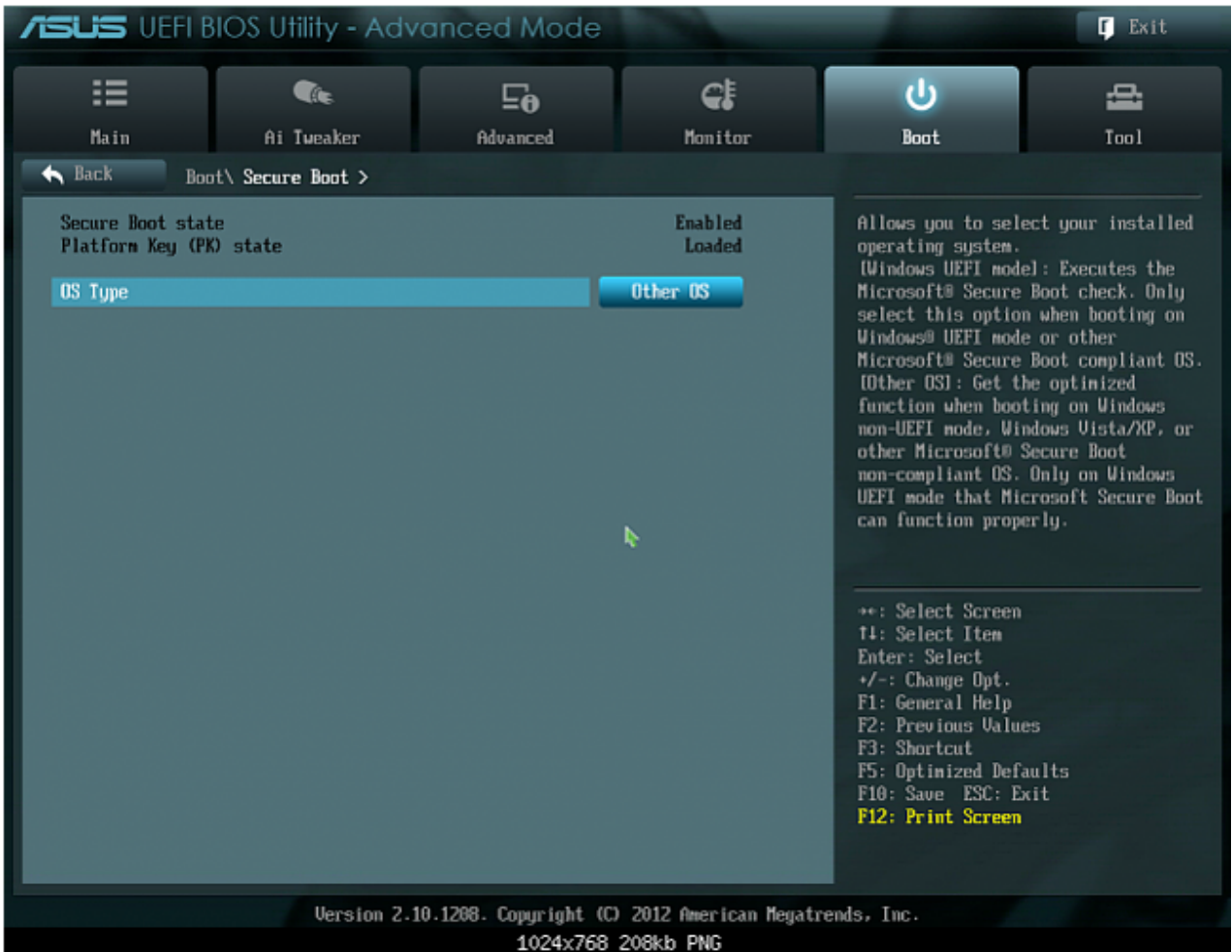


## SercureBoot : MainBoard

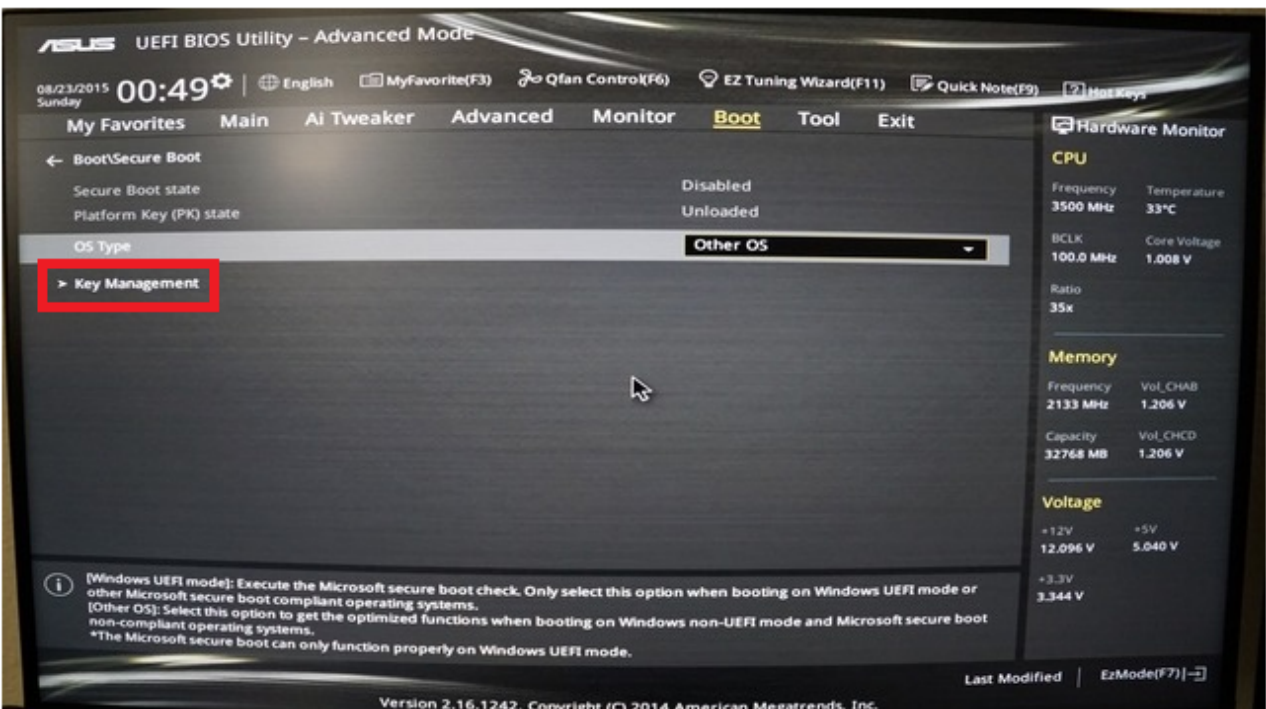
- Asrock



- Asus



- OS Type Other OS



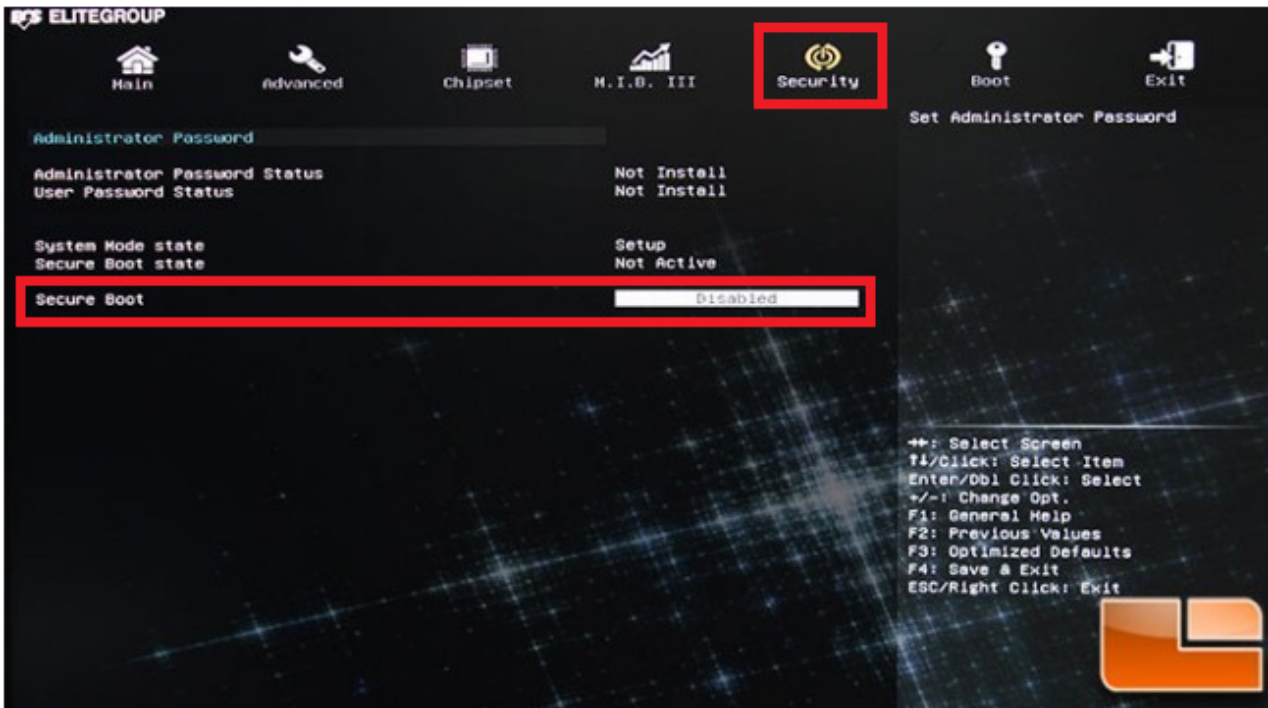


- Key Management가 Secure Boot

- GIGABYTE



• ECS



• MSI

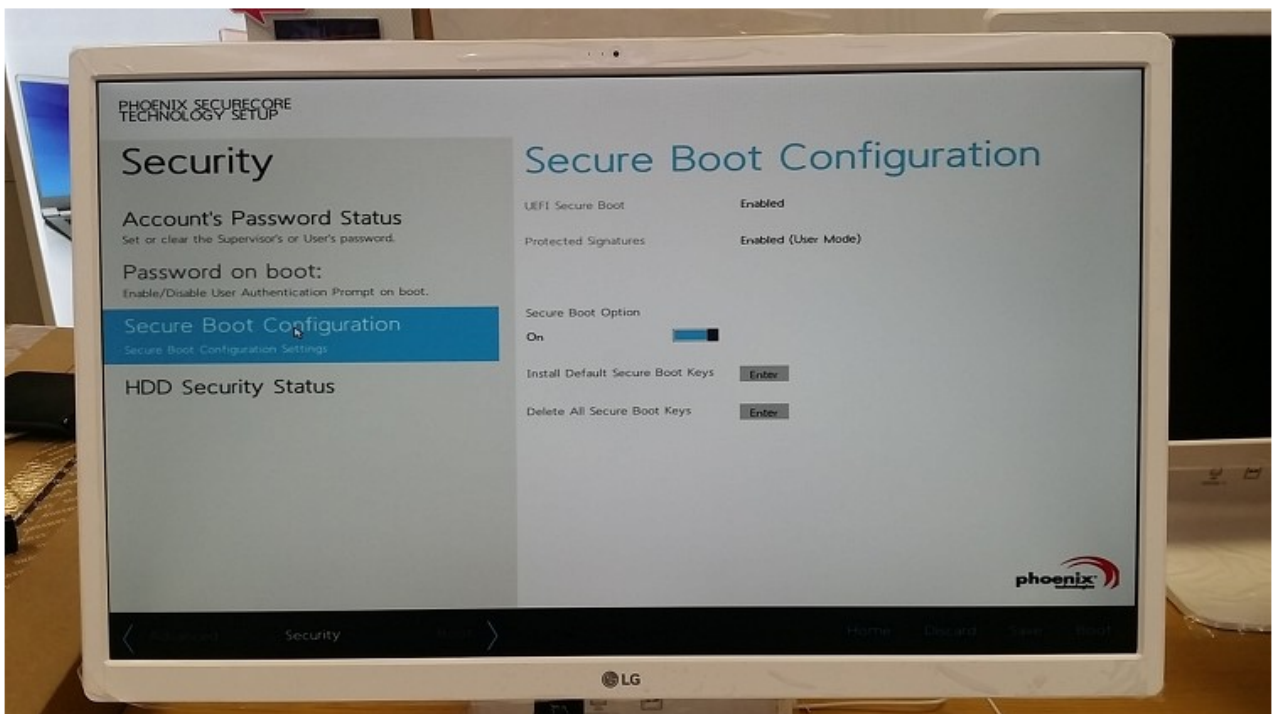


Settings ≡ Advanced ≡ Windows8/8.1 Configuration ≡ Secure Boot 에 있는 것 같다.

• SAMSUNG



- LG



From:

<http://comizoa.com/info/> - -

Permanent link:

<http://comizoa.com/info/doku.php?id=platform:common:support:secureboot&rev=1544500439>

Last update: **2024/07/08 18:22**