

SercureBoot 1

SercureBoot 1 1

SercureBoot 2 : CMD 2

SercureBoot : AMI BIOS 3

SercureBoot : MainBoard 6

SecureBoot

x SecureBoot

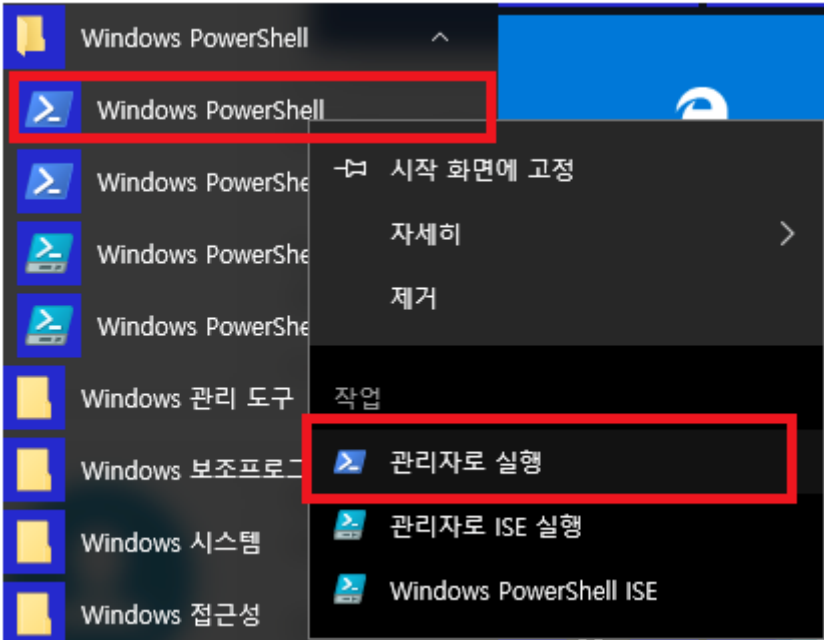
SercureBoot

- SecureBoot , OS
- SecureBoot가 Enable 가 가

SercureBoot 1

Windows PowerShell

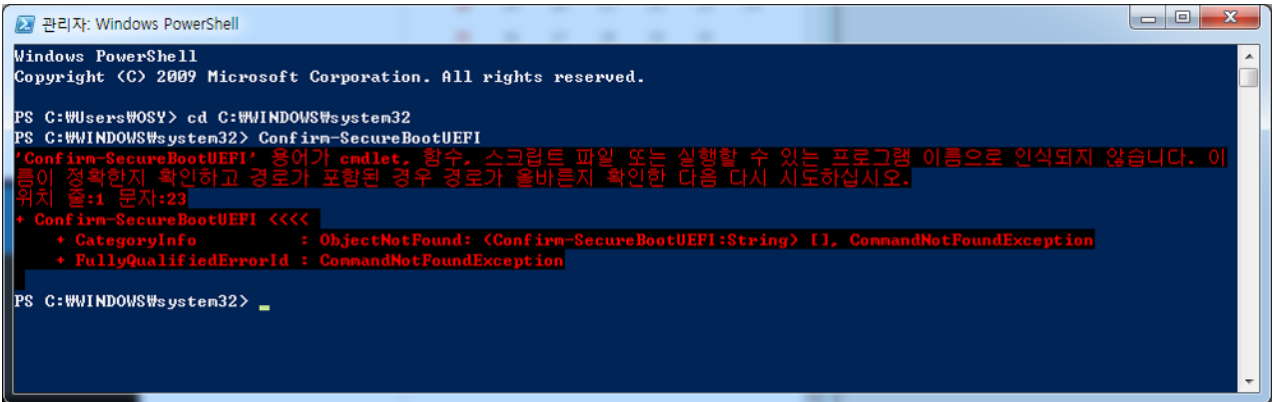
- Windows PowerShell



- 가 system32가 system32

- Confirm-SecureBootUEFI

```
cd C:\WINDOWS\system32
Confirm-SecureBootUEFI
```



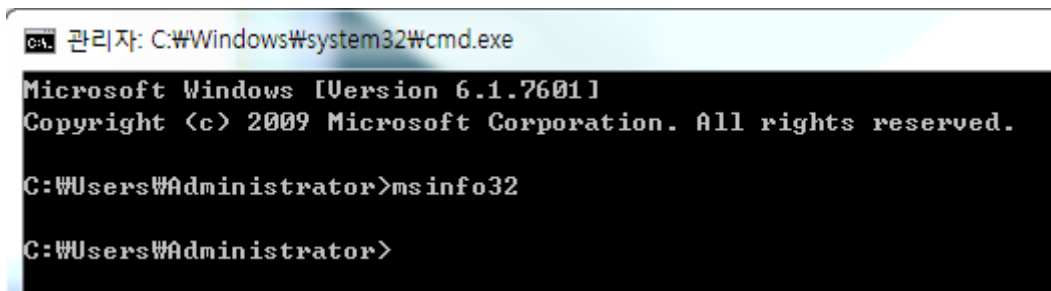
- 가 BIOS가 UEFI
SecureBoot True False

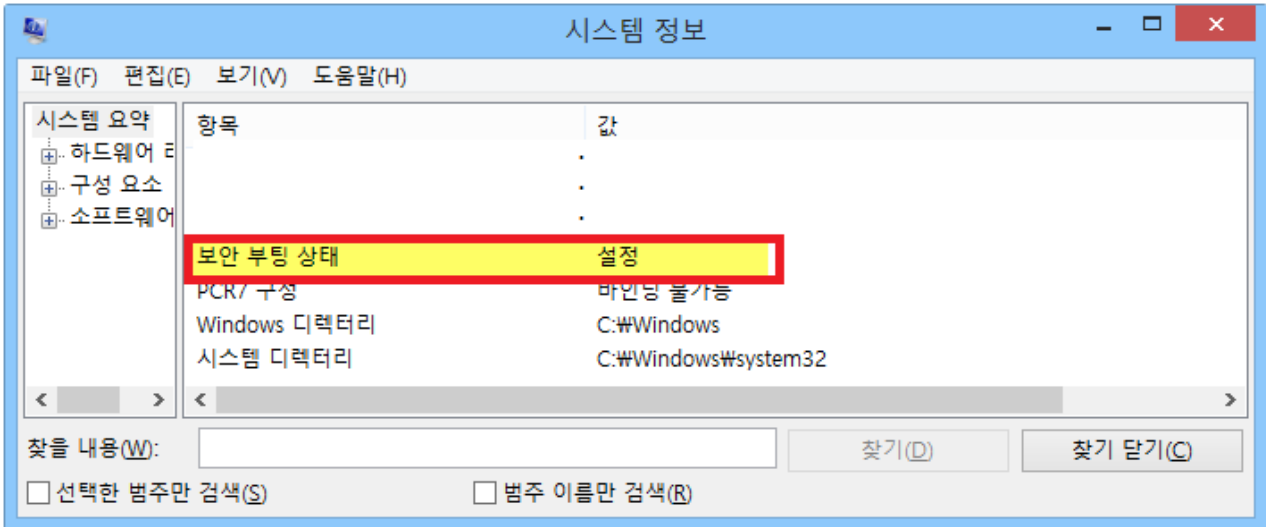
UEFI / Secure Boot Enable : True

UEFI / Secure Boot Enable : False

SercureBoot 2 : CMD

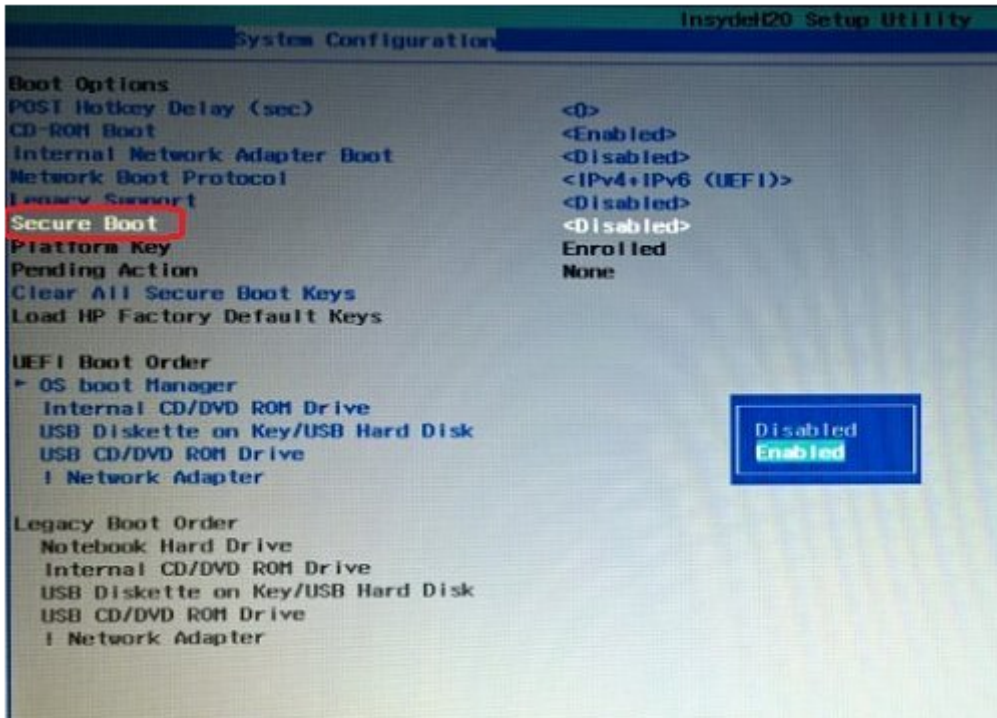
- CMD
 - msinfo32 , system32



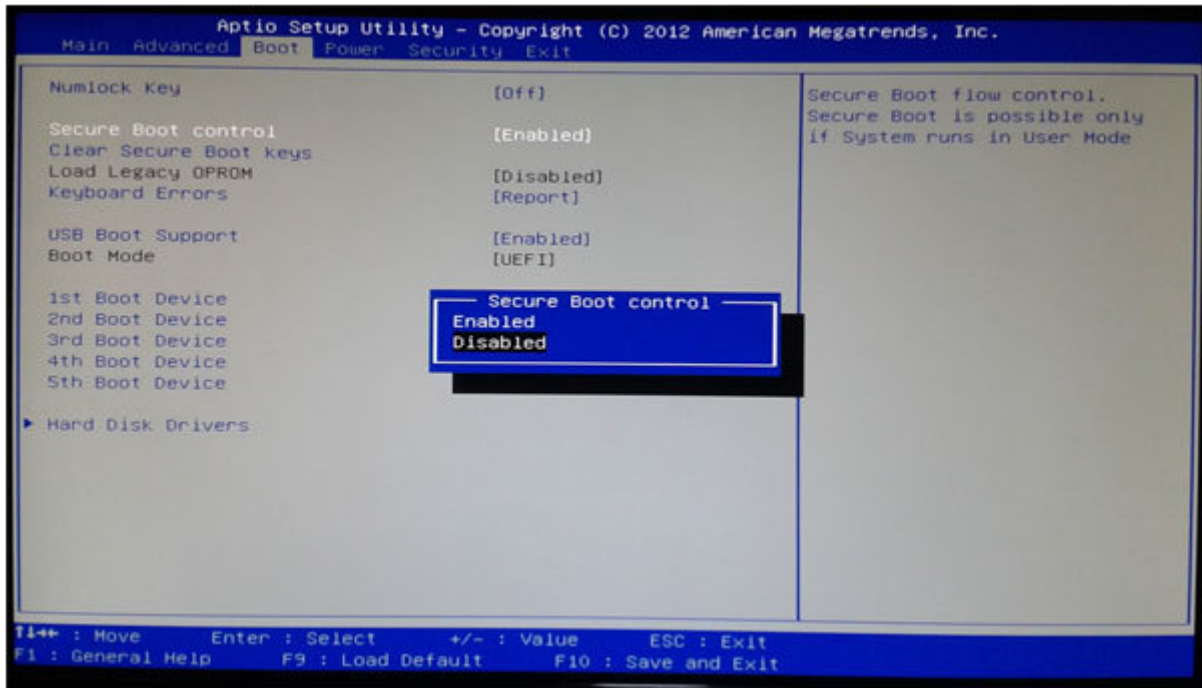


SercureBoot : AMI BIOS

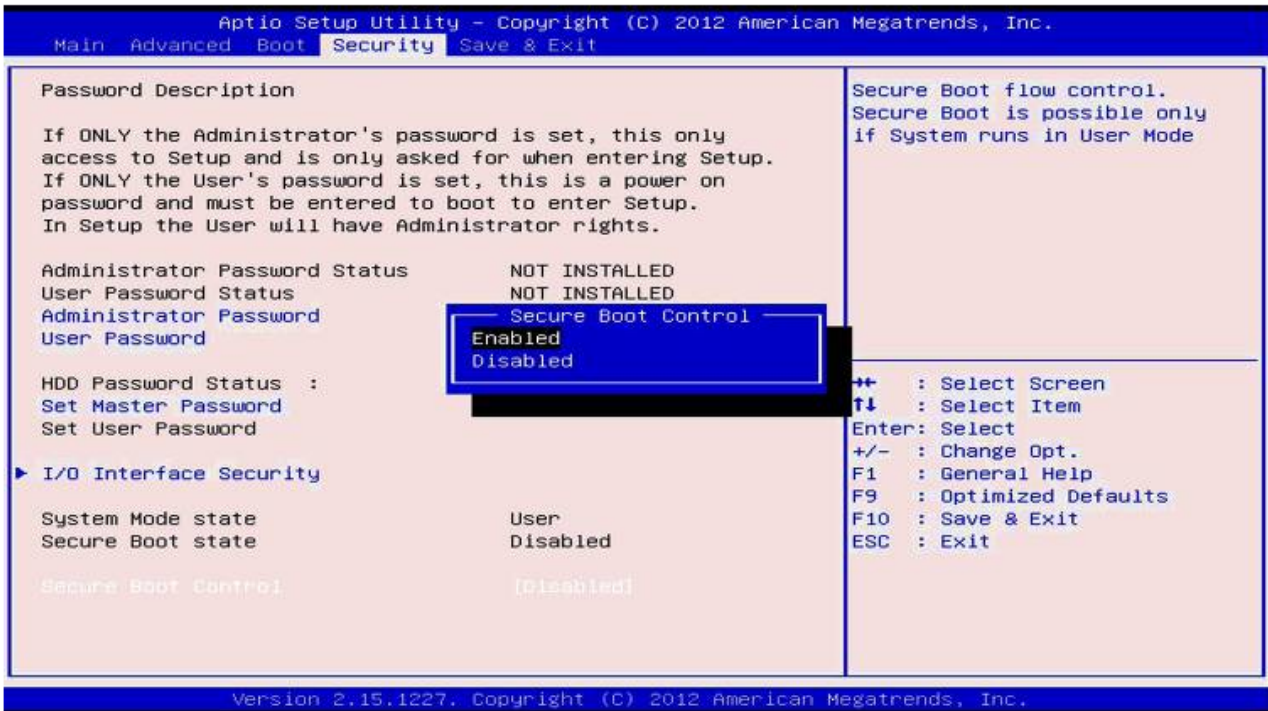
- Case 1



• case 2



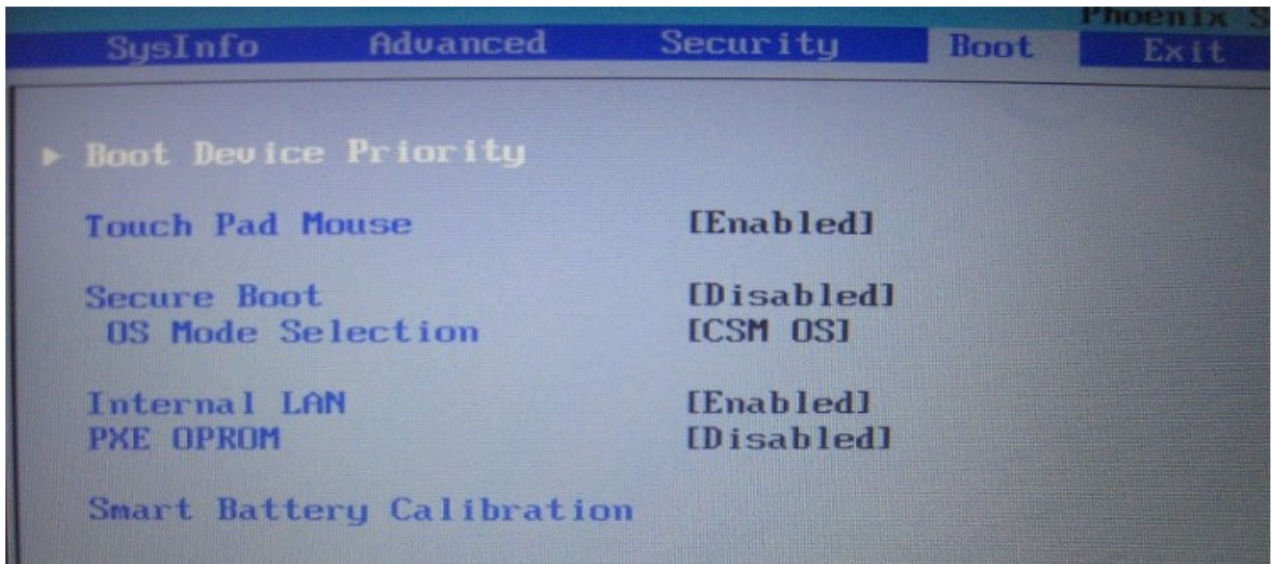
• case 3



- case 4

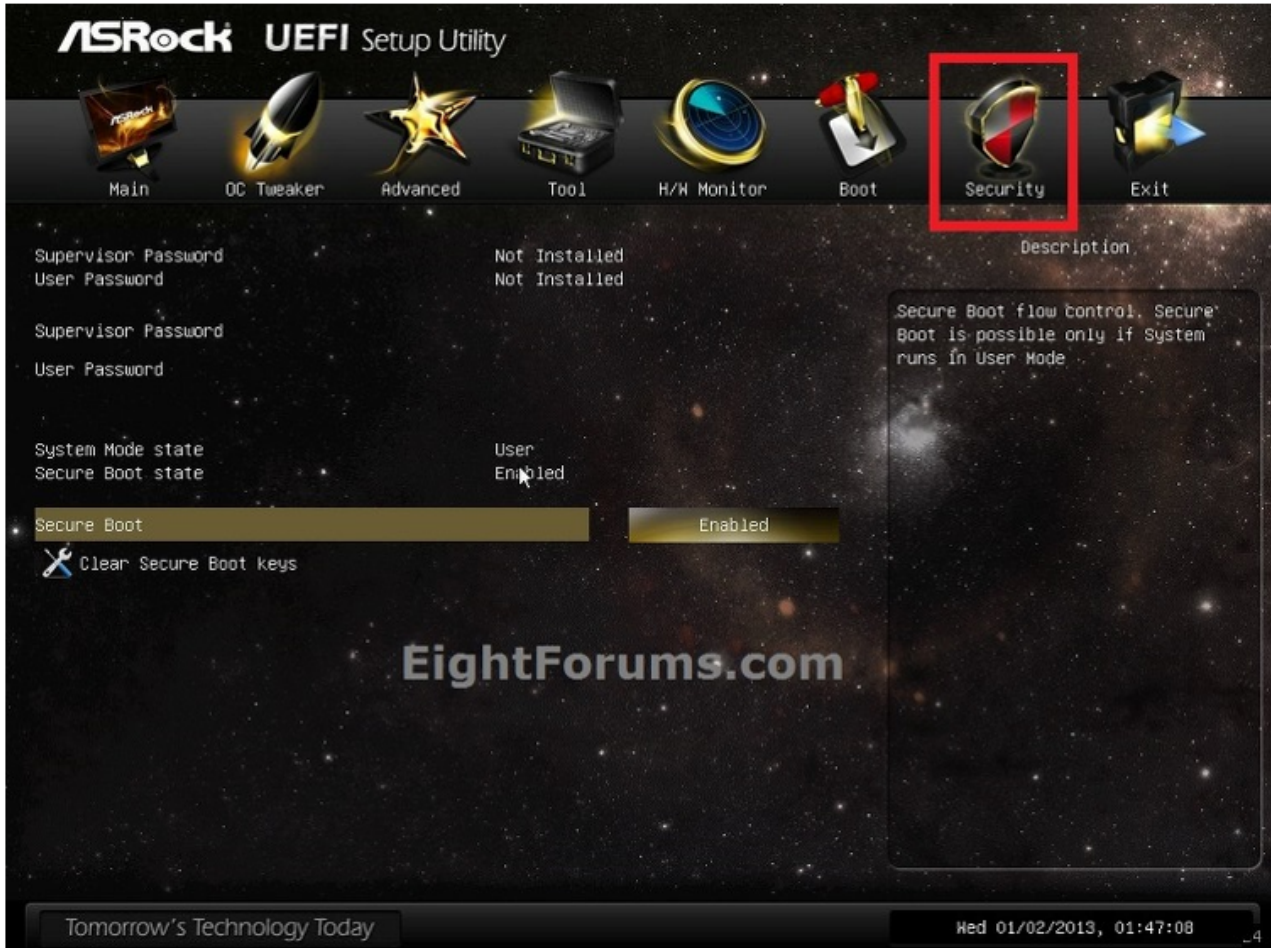


- case 5

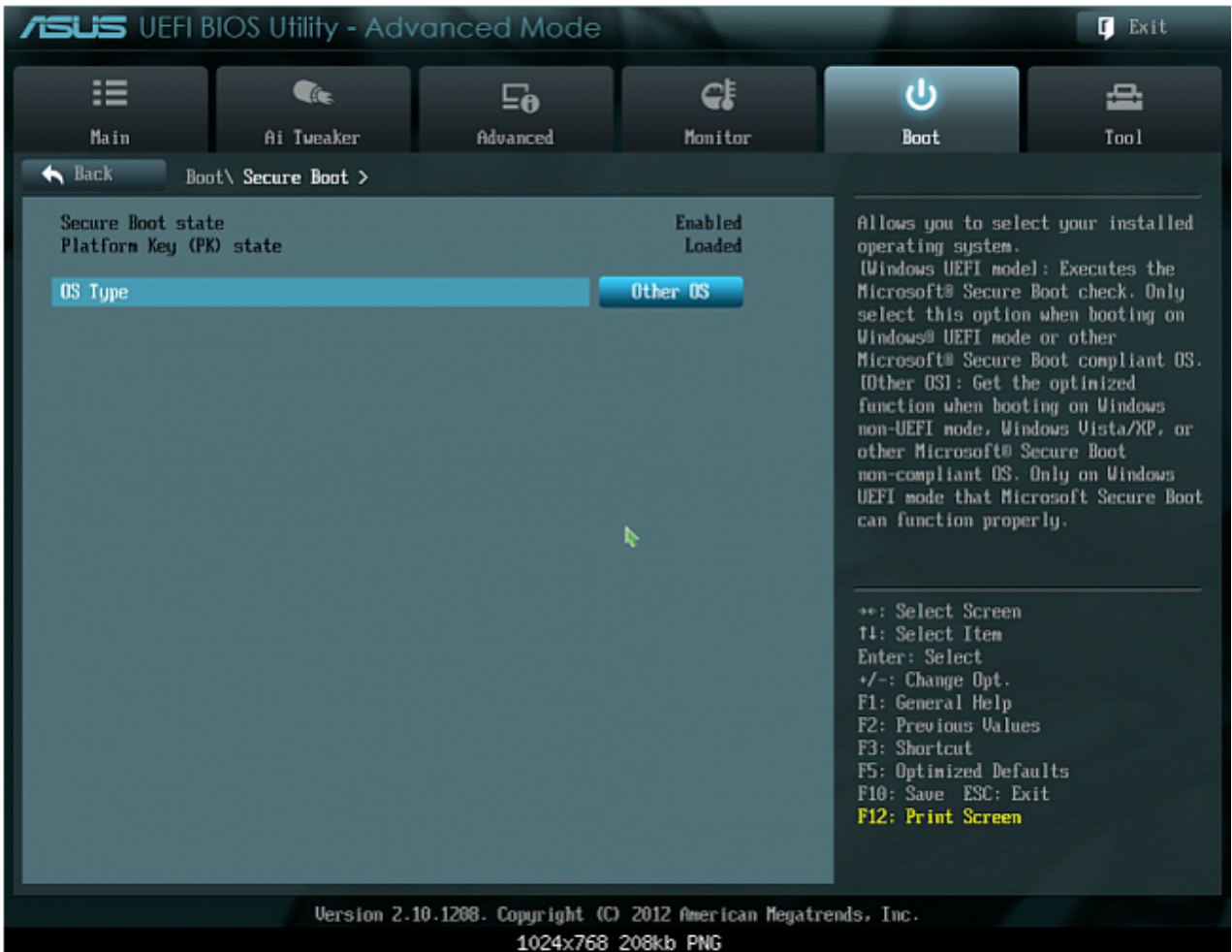


SercureBoot : MainBoard

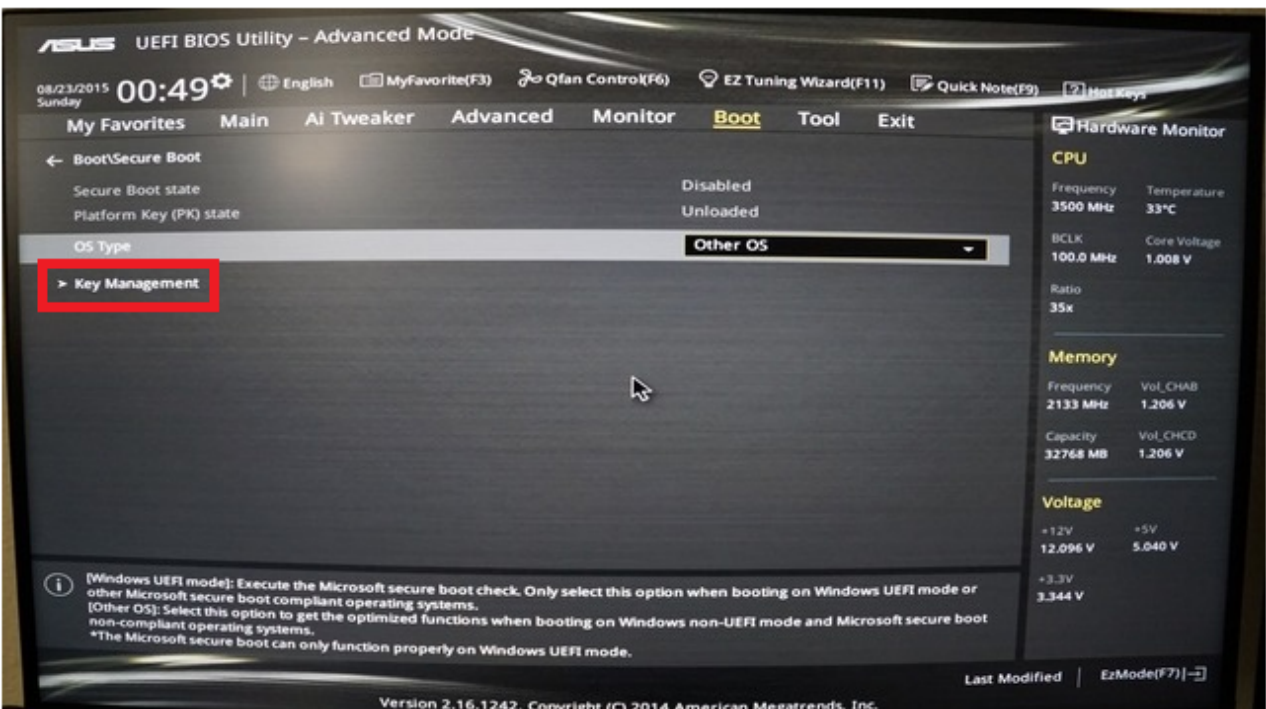
- Asrock



- Asus



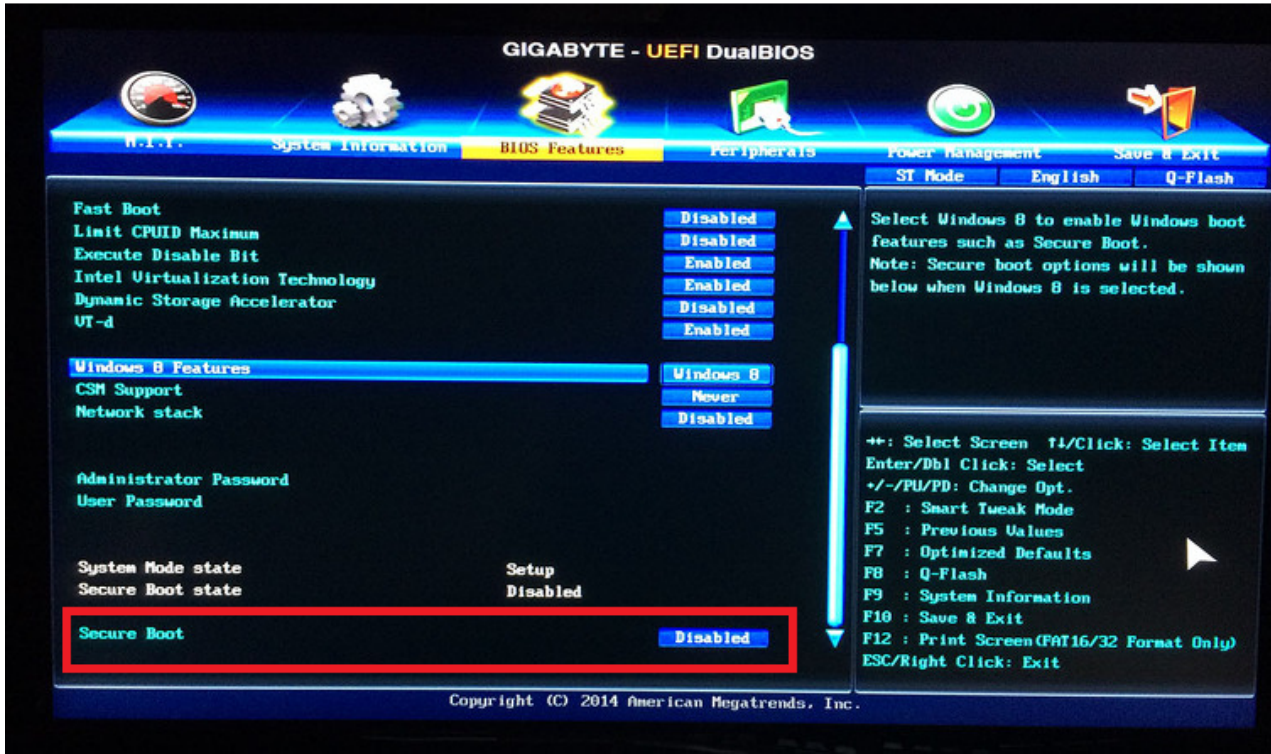
- OS Type Other OS



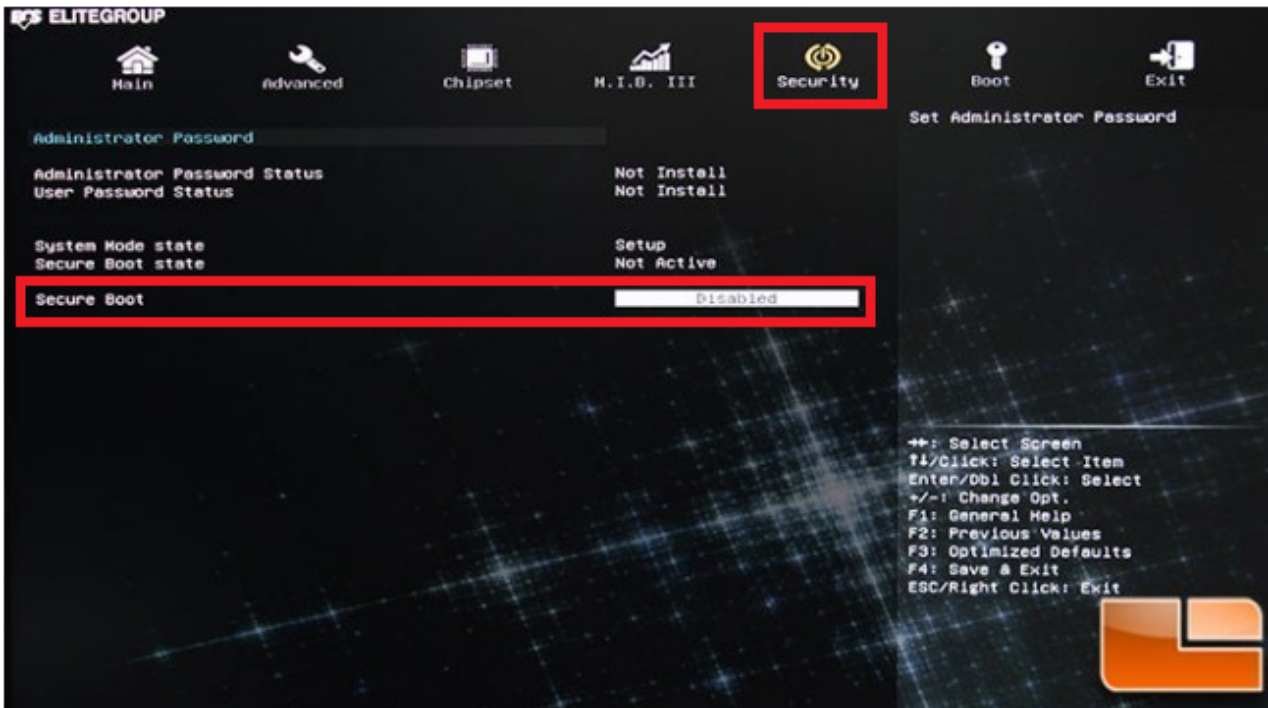


- Key Management가 Secure Boot

• GIGABYTE



• ECS

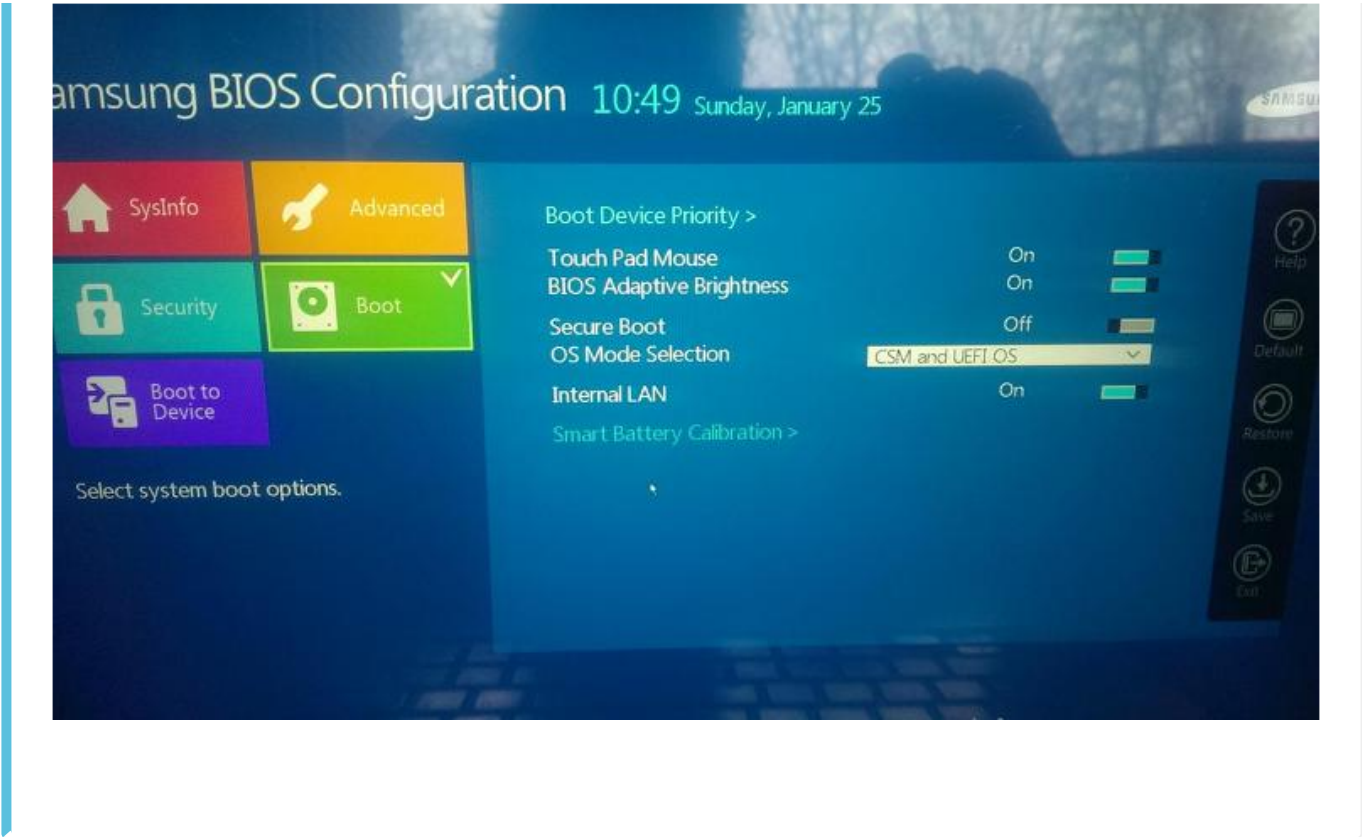


• MSI

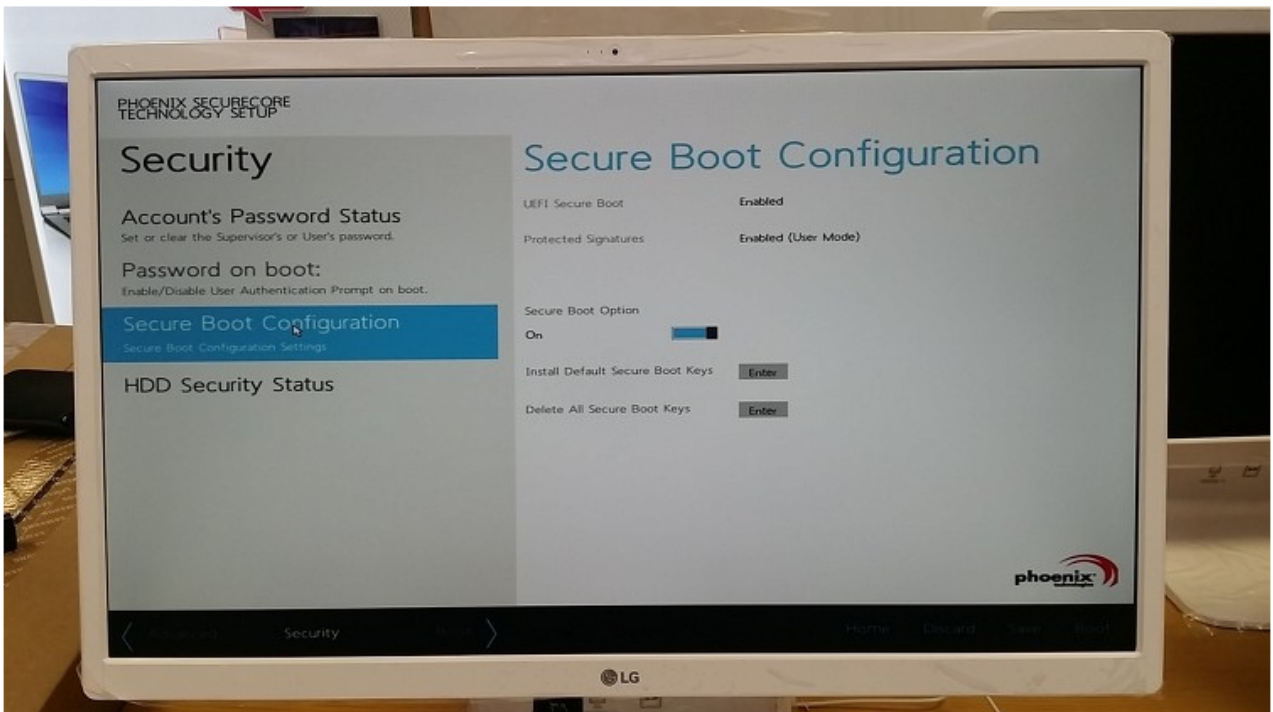


Settings ≡ Advanced ≡ Windows8/8.1 Configuration ≡ Secure Boot 에 있는 것 같다.

• SAMSUNG



- LG



From:

<http://comizoa.com/info/> - -

Permanent link:

<http://comizoa.com/info/doku.php?id=platform:common:support:secureboot&rev=1544500563>

Last update: **2024/07/08 18:22**