

| | | |
|-------------|---------|---|
| SercureBoot | | 1 |
| SercureBoot | 1 | 1 |
| SercureBoot | 2 | 2 |
| SercureBoot | 1 | 3 |
| SercureBoot | 2 | 6 |

SecureBoot

x SecureBoot

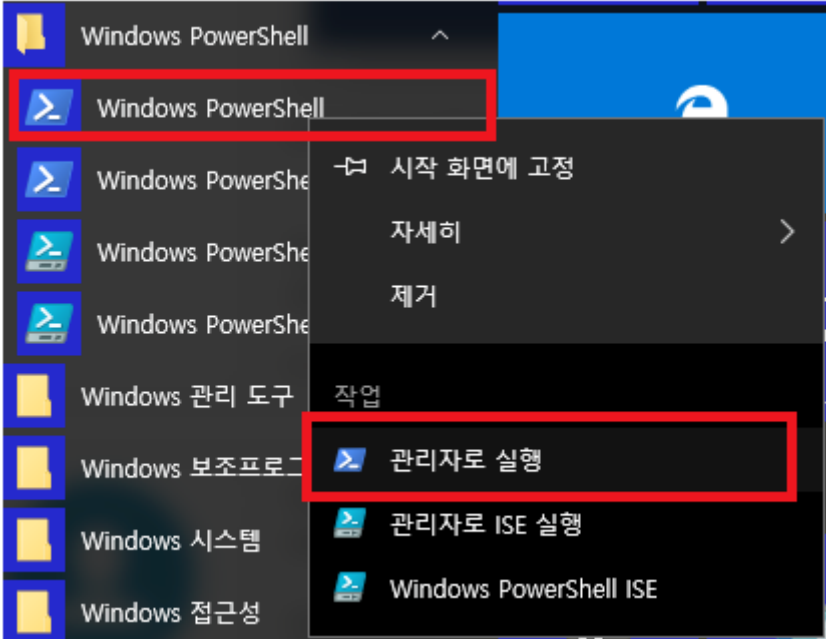
SercureBoot

- SecureBoot , OS
- SecureBoot가 Enable 가 가

SercureBoot 1

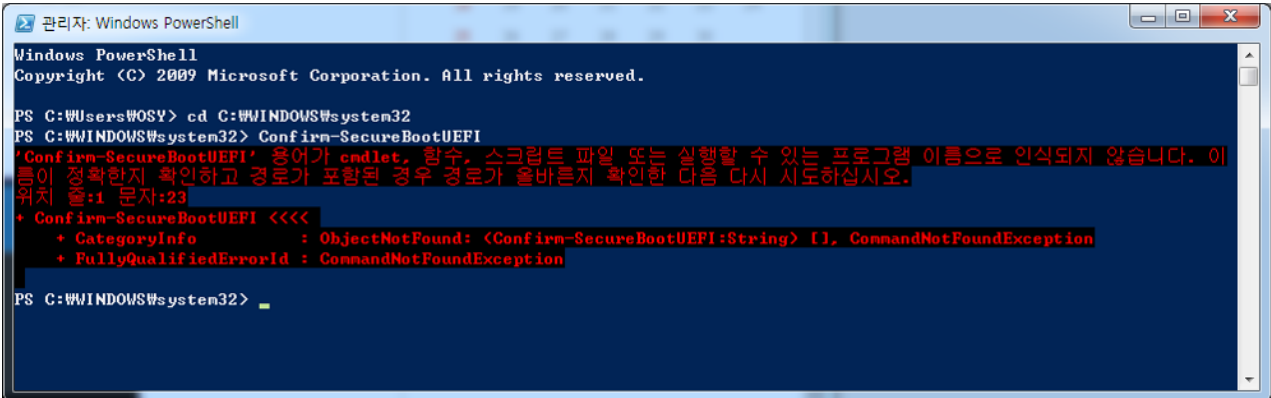
Windows PowerShell

- Windows PowerShell



- 가 system32가 system32
- Confirm-SecureBootUEFI

```
cd C:\WINDOWS\system32
Confirm-SecureBootUEFI
```



- 가 BIOS가 UEFI
SecureBoot True False .

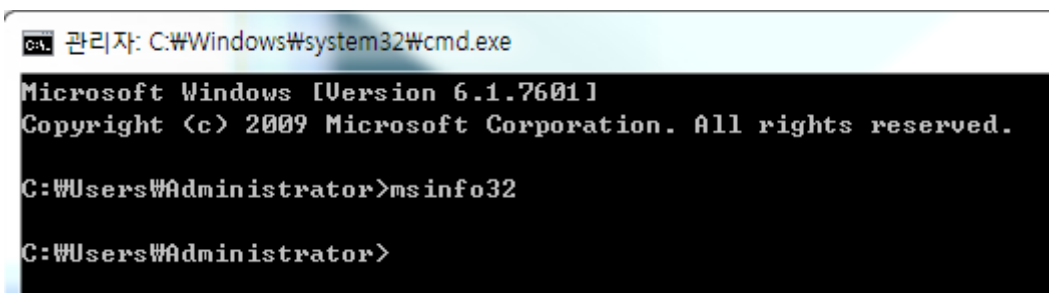
```
UEFI / Secure Boot Enable : True
```

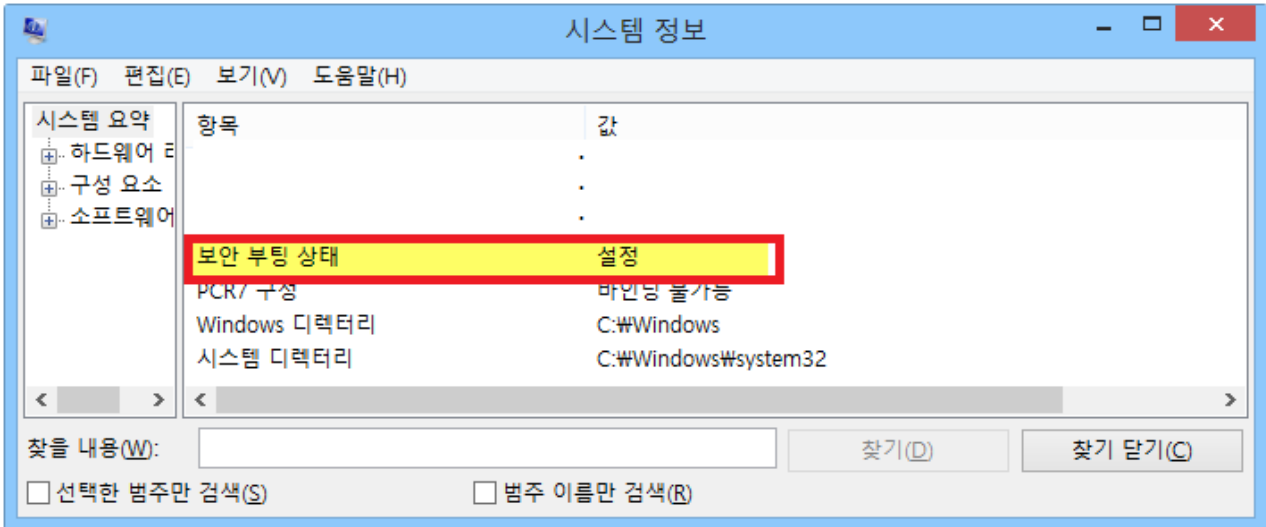
```
UEFI / Secure Boot Enable : False
```

SercureBoot 2

CMD

- CMD msinfo32
o , system32



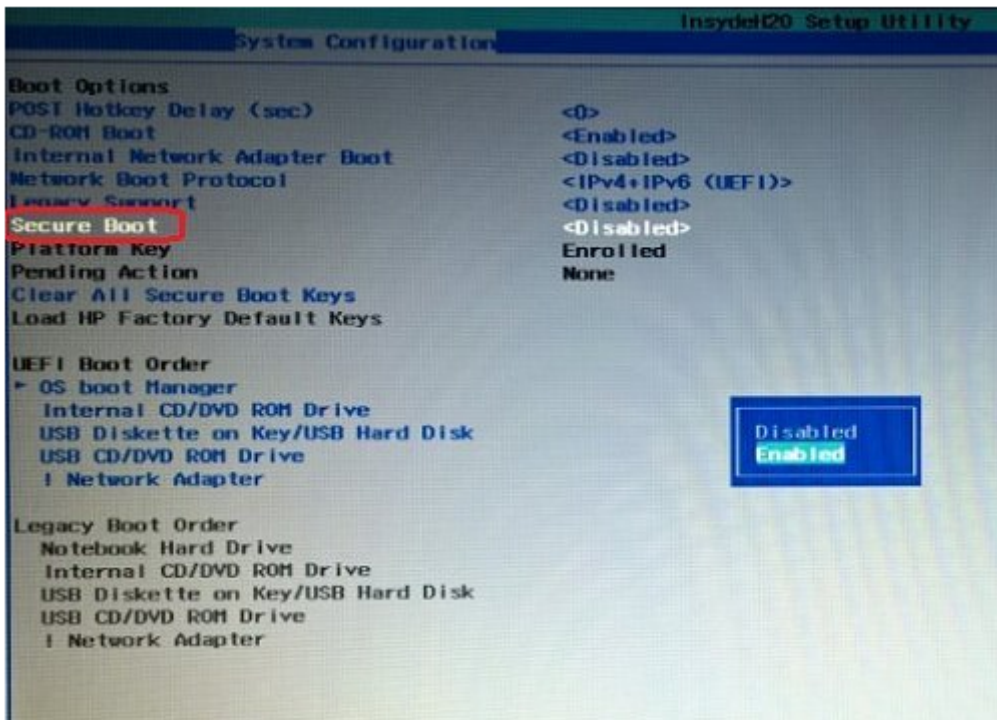


SecureBoot

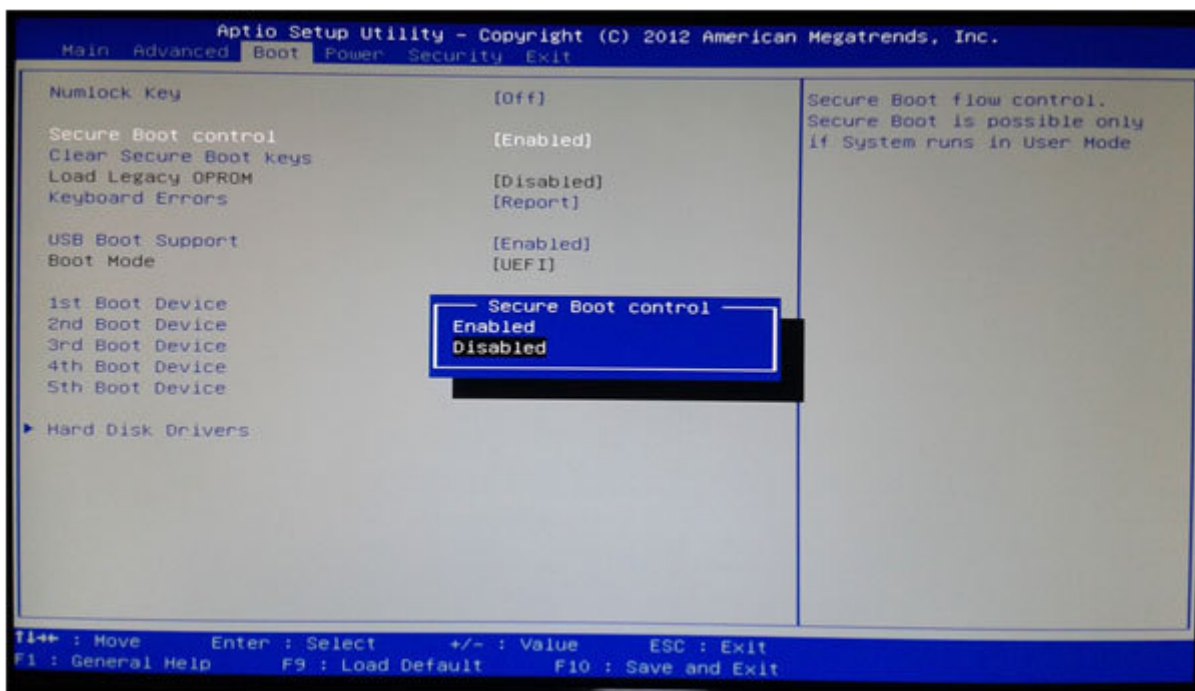
1

AMI BIOS

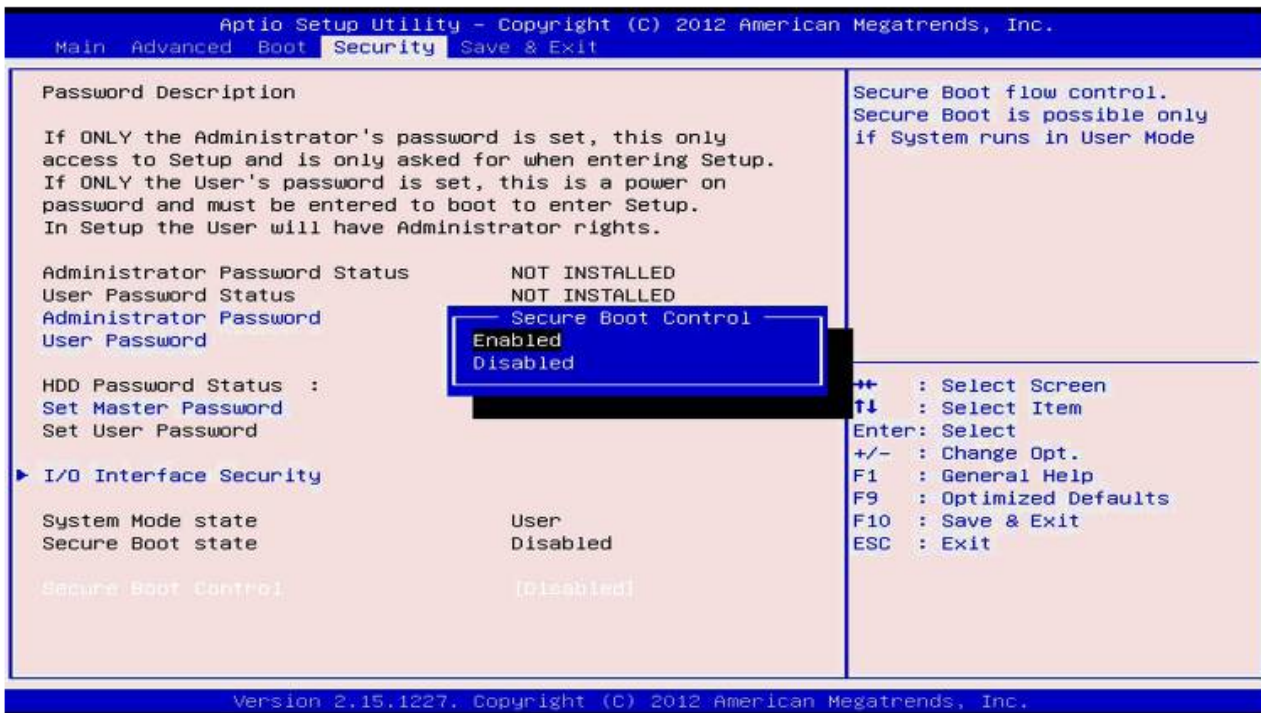
- Case 1



• case 2



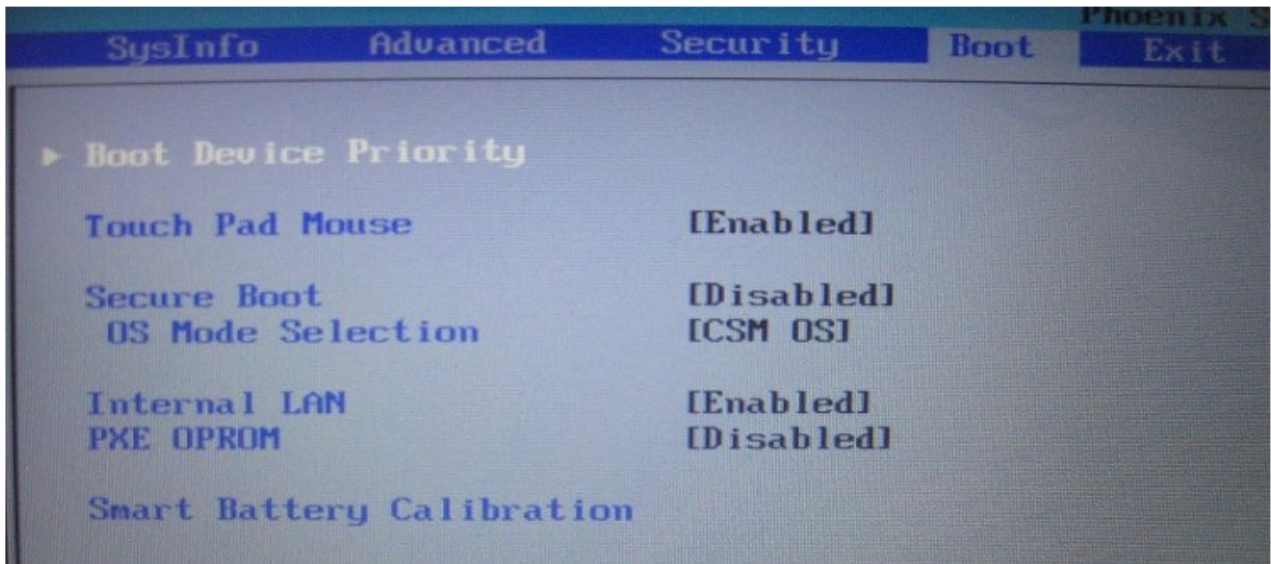
• case 3



- case 4



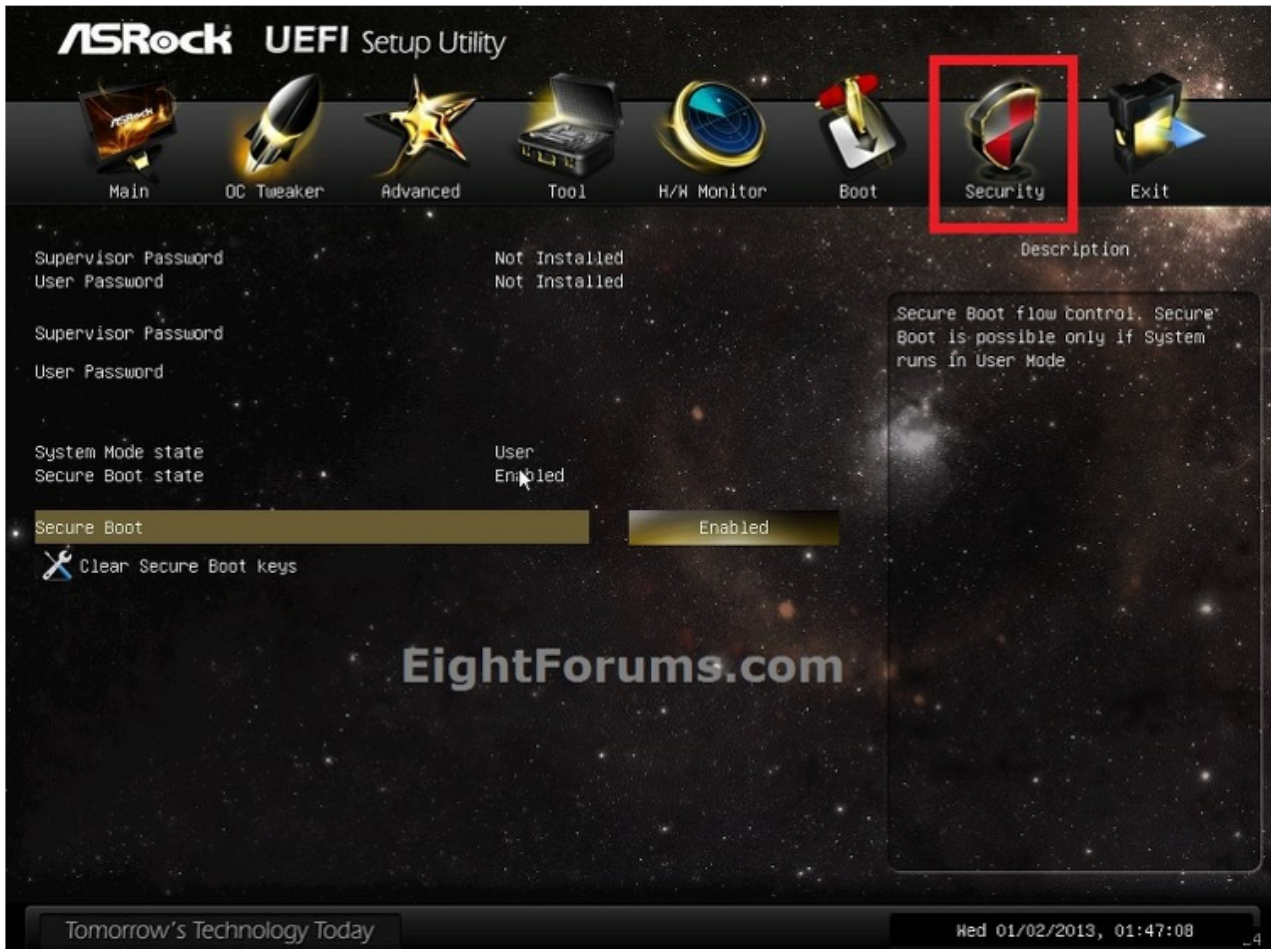
- case 5



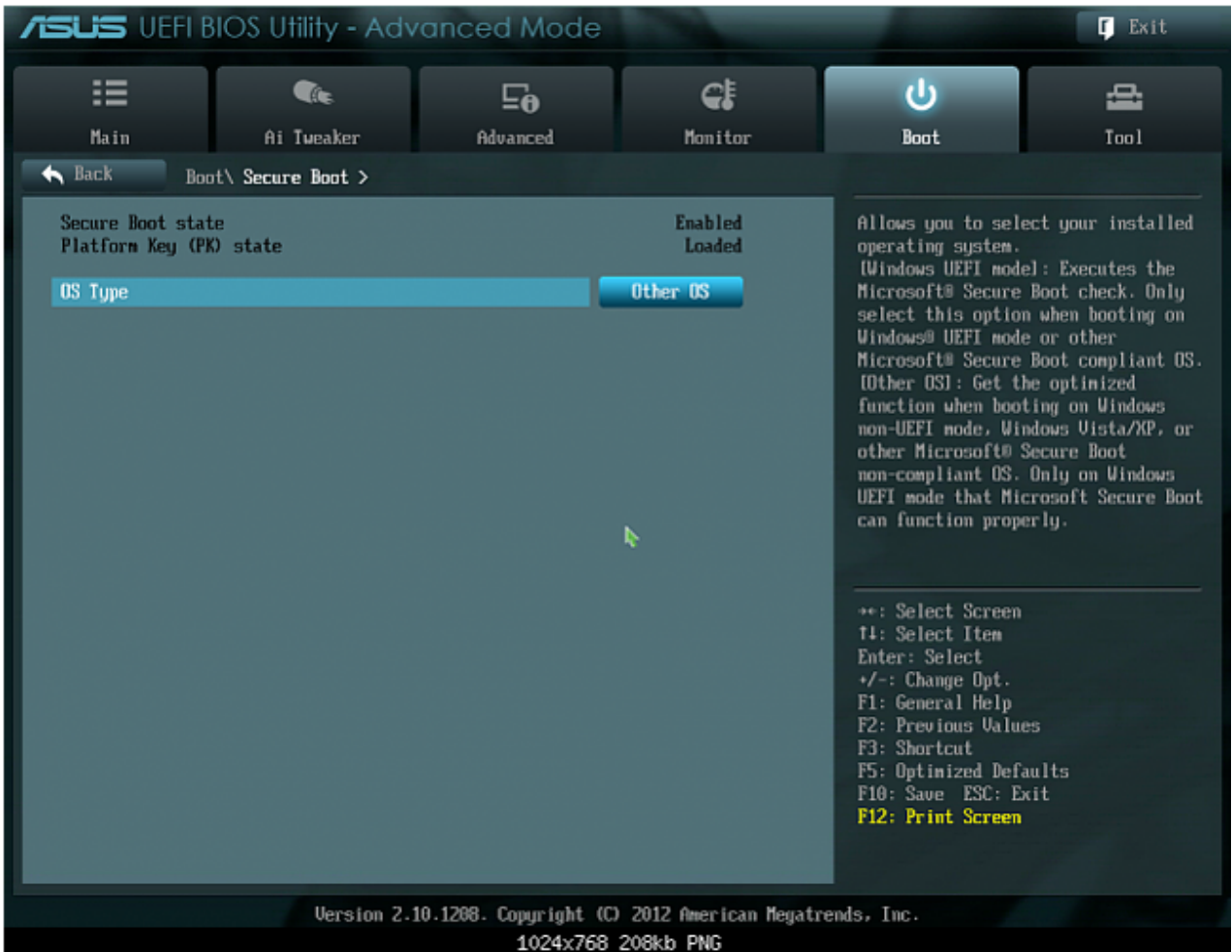
SecureBoot 2

MainBoard

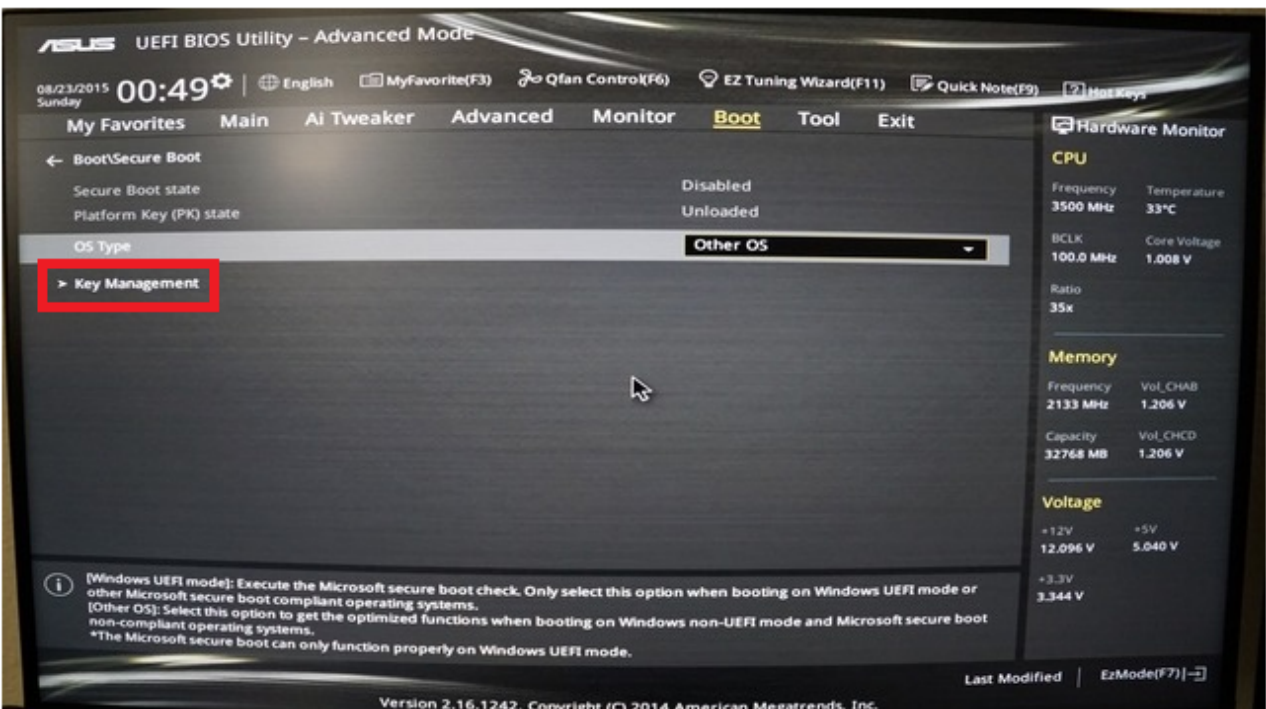
- Asrock



- Asus



- OS Type Other OS



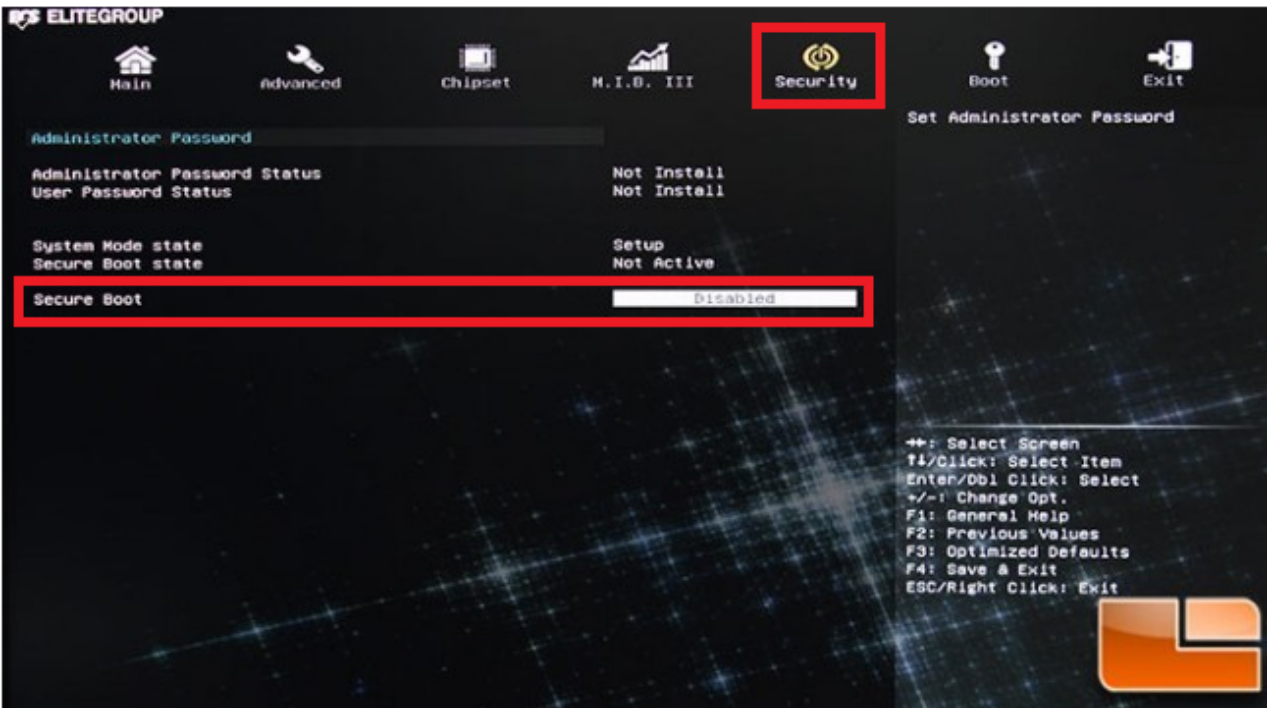


- Key Management가 Secure Boot

- GIGABYTE



• ECS



• MSI

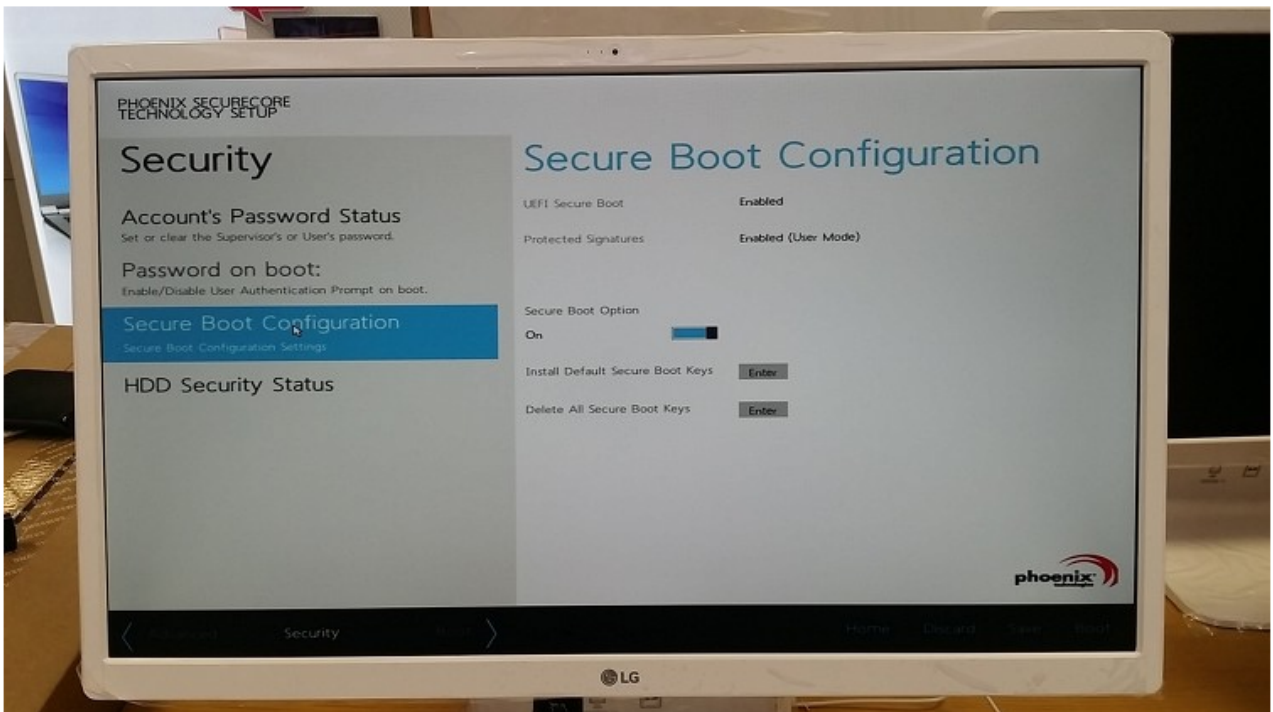


Settings ≡ Advanced ≡ Windows8/8.1 Configuration ≡ Secure Boot 에 있는 것 같다.

• SAMSUNG



- LG



From:

<http://comizoa.com/info/> - -

Permanent link:

<http://comizoa.com/info/doku.php?id=platform:common:support:secureboot&rev=1544500670>

Last update: **2024/07/08 18:22**