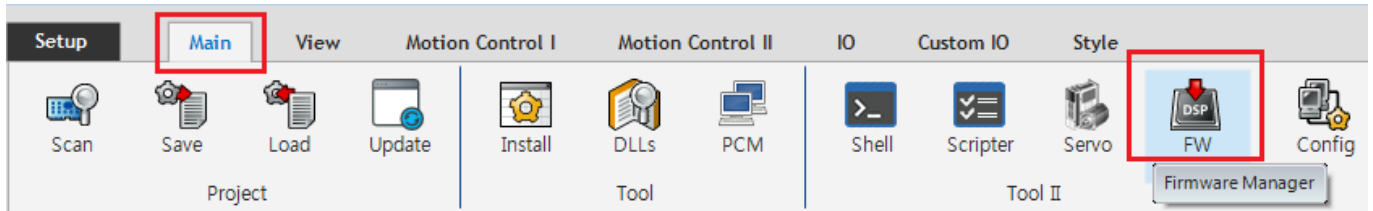


Table of Contents

FW Update

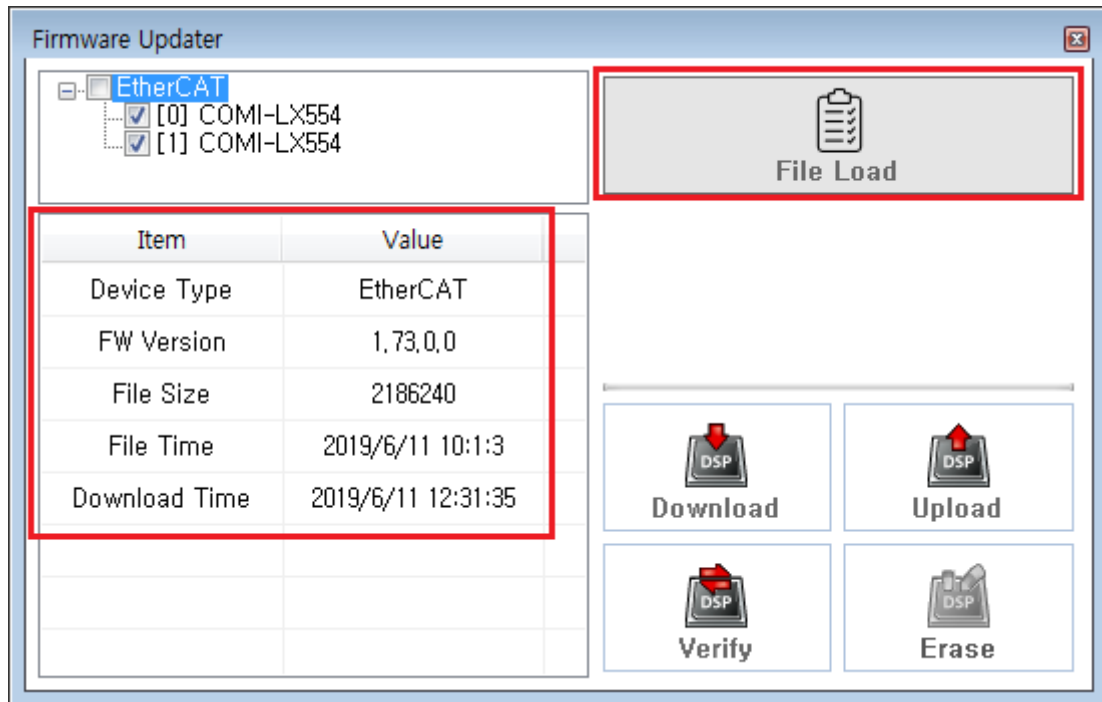
× 펌웨어 업데이트에 대한 안내 페이지입니다.

1 FW 버튼을 클릭하여 Firmware Manager 실행

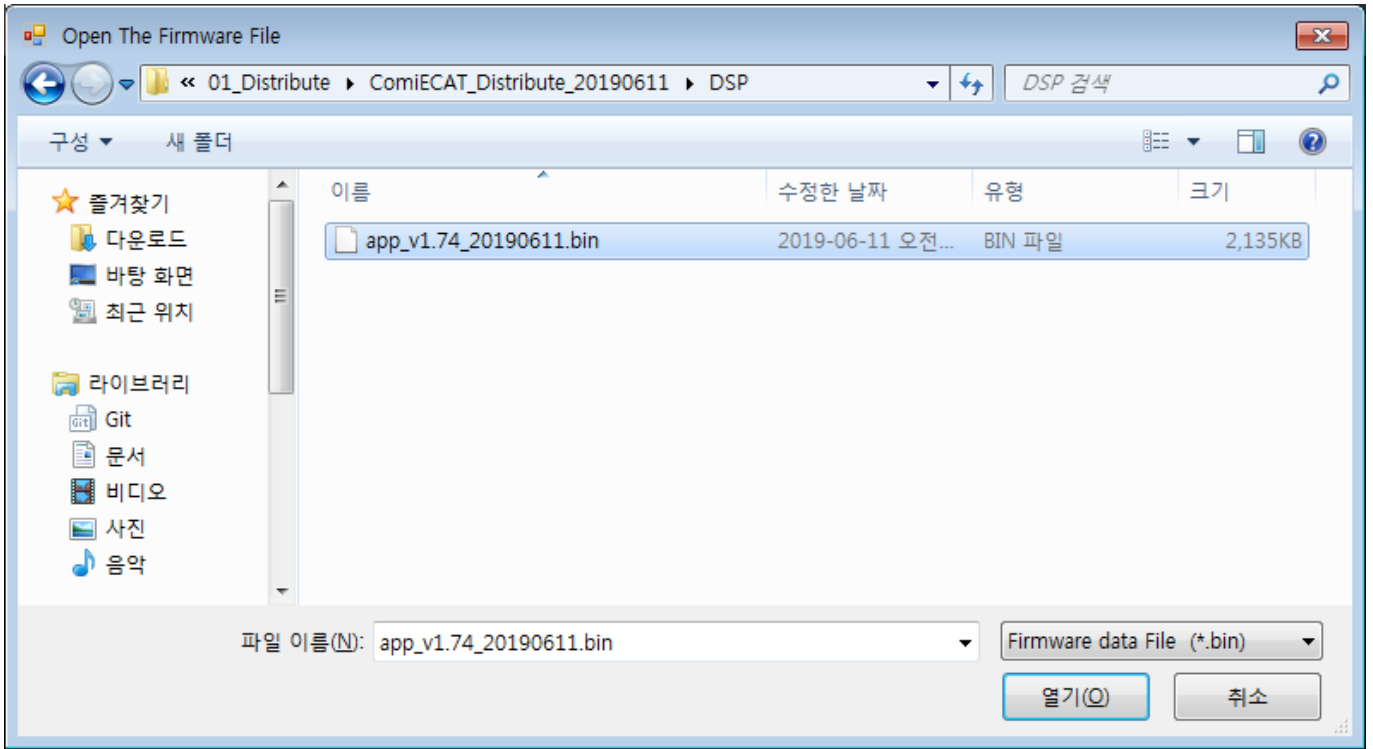


2 왼쪽 화면에서 현재 설치된 FW 확인

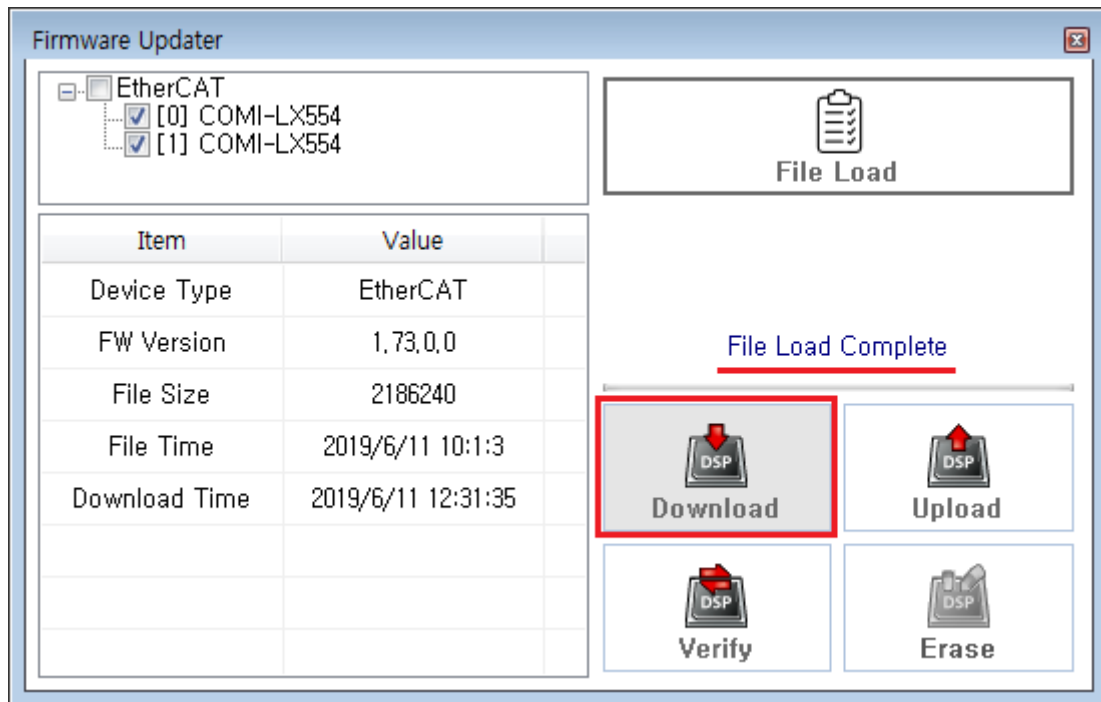
- Device Tree에서 Device 선택 시 선택된 Device의 FW 정보 표시

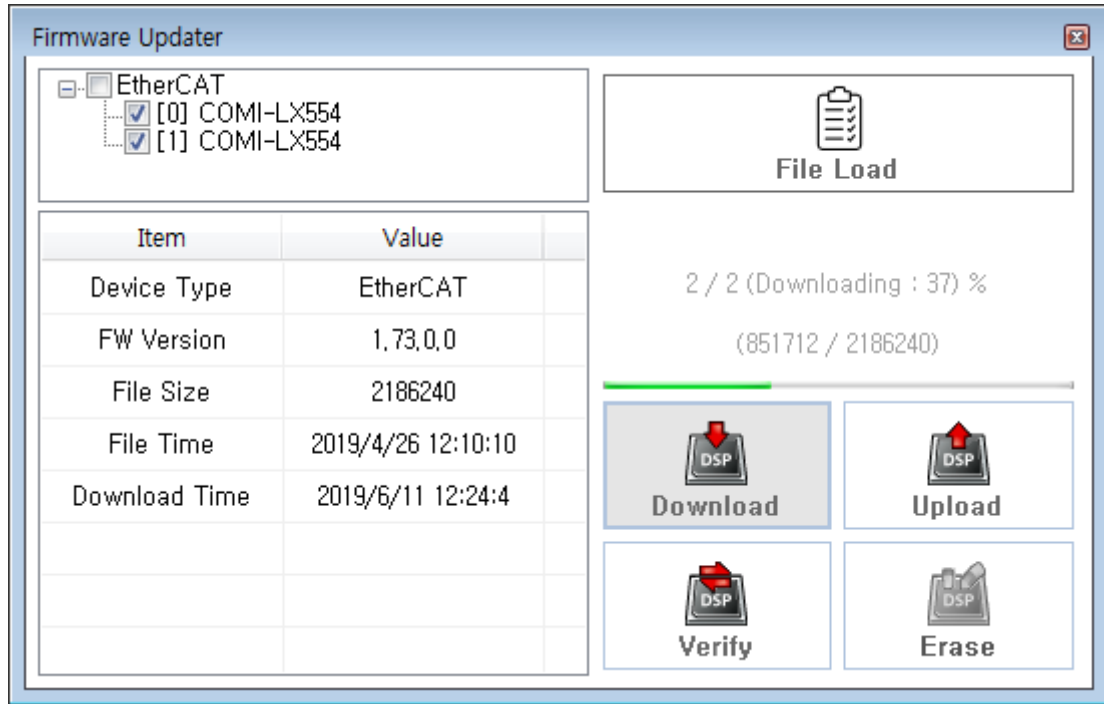


3 File Load 버튼을 클릭하여 Firmware File 선택

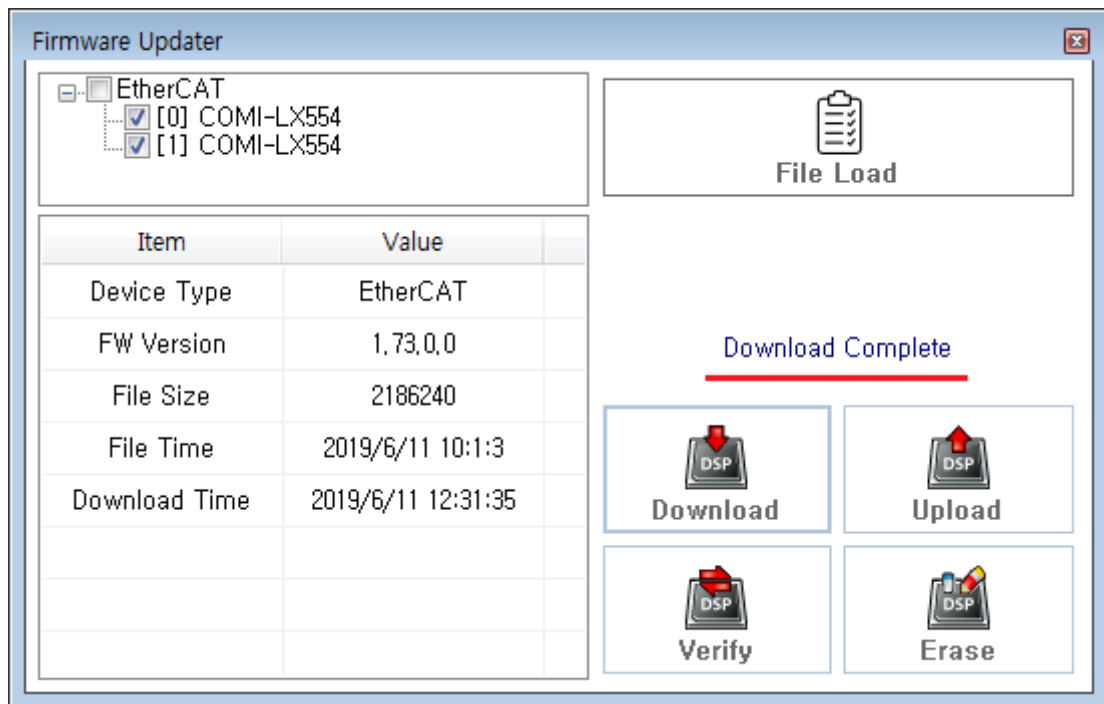


4 “File Load Complete” 메시지 확인 후 **Download** 버튼을 클릭하여 Download 진행





5 "Download Complete" 메시지 확인 후 종료



x 업데이트 완료 후 펌웨어를 재부팅 시켜야 업데이트 된 펌웨어로 동작합니다.

From: <http://comizoa.com/info/> - -

Permanent link: http://comizoa.com/info/doku.php?id=platform:common:support:swupdate:00_fwupdate&rev=1575969158

Last update: 2024/07/08 18:22