

Configuration : 1

..... 1

ESI Import 2

Network 2

Scan 2

Master-DC 3

Scan 4

Download 5

Configuration Check 6

Configuration :

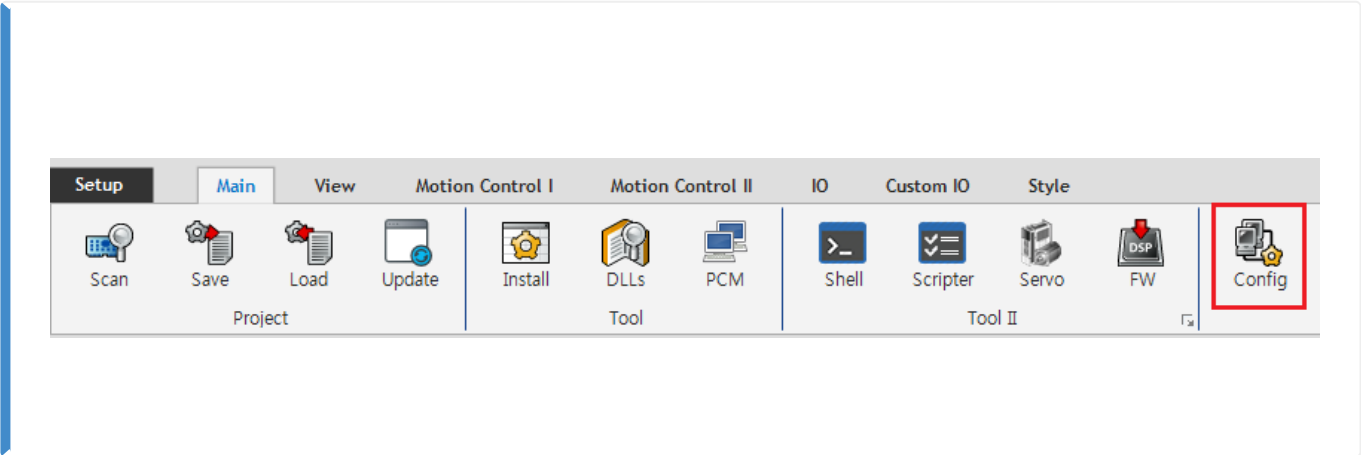
×

Configuration
, Slave

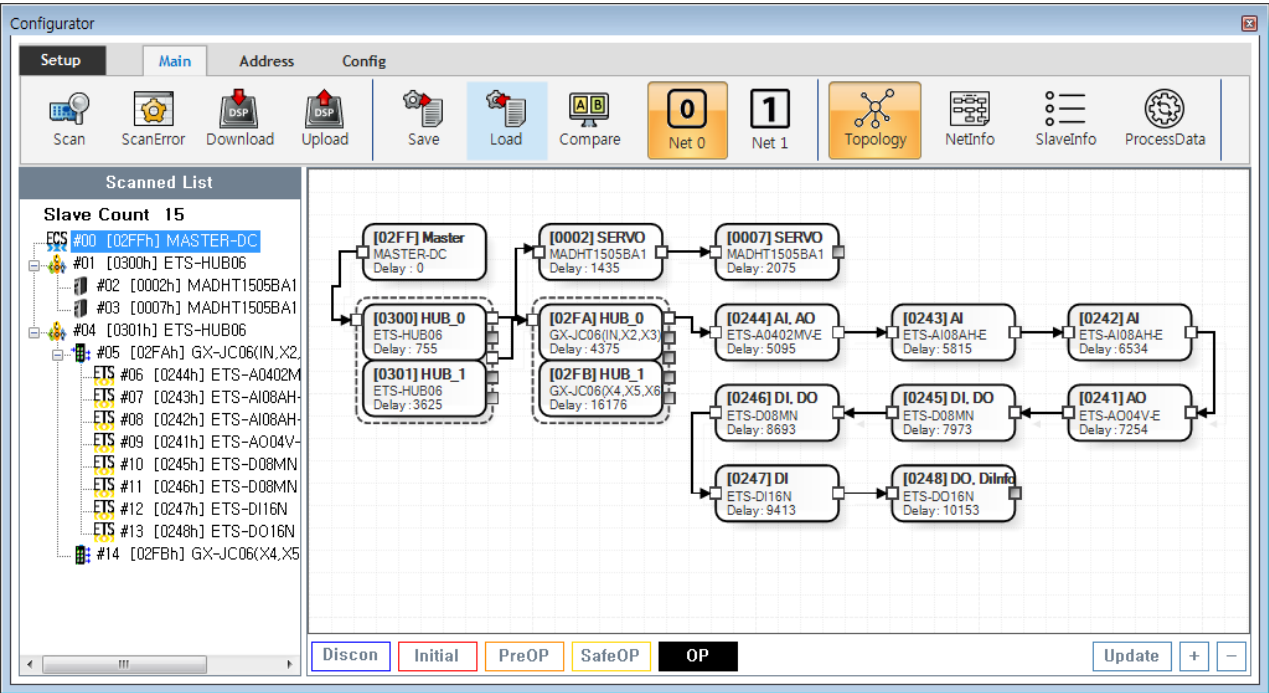
Configuration

×

ComiIDE v1.4.0.0



- ComiIDE Main **Config**



- Config , EtherCAT Master가 Load
 - **Device Load**
 - **SW Version**
- Config 가 Update

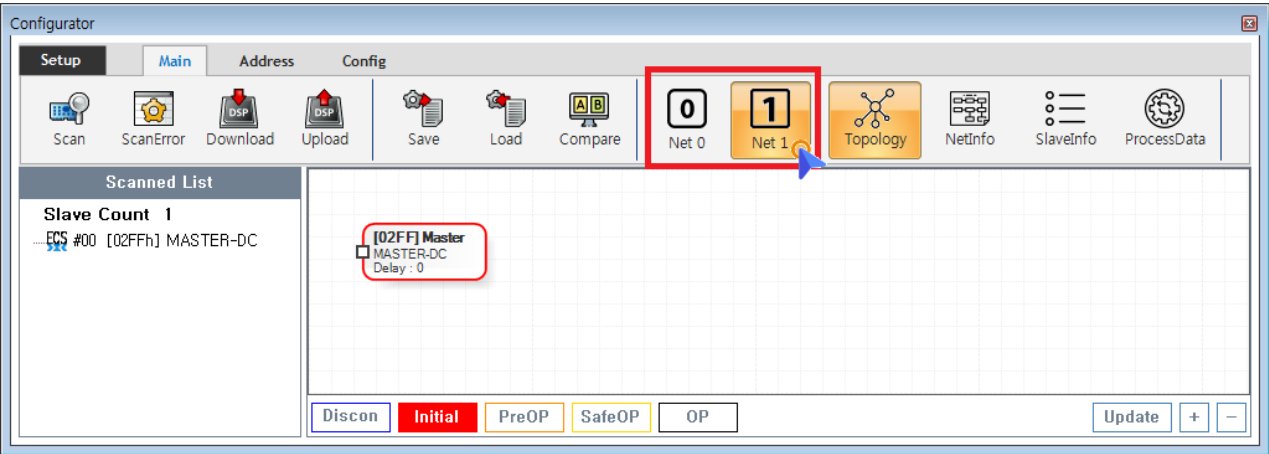
- Config
- Scan - Edit - Download
- Configuration
- .

ESI

Import

- Scan
- Slave Module
- ESI file
- ESI
- ./ComilDE/Data/Xml
- .
- 가 /
- ESI
- Configurator
- .

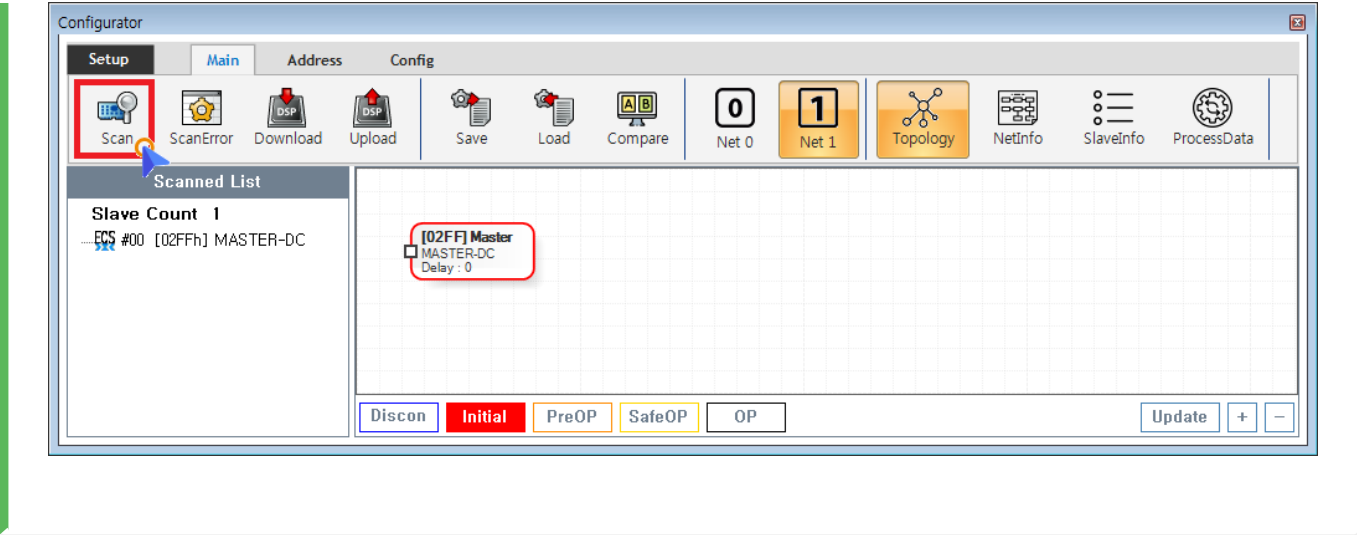
Network



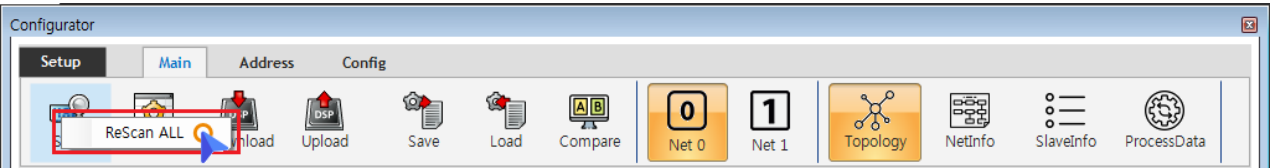
- COMI-LX550 ~ COMI-LX552
- 1
- Network 가
- , COMI-LX554
- Network 가
- .
- Network 가
- ,
- **Net #**
- , Network
- .
- Configuration
- Network
- ,
- Network
- Configuration
- .

Scan

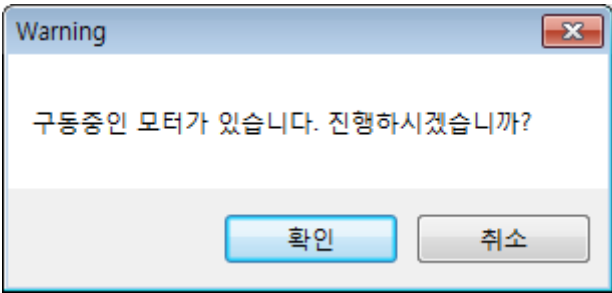
- Scan
- EtherCAT Master
- Slave Module
- .



- Main Tab **Scan**
 ◦ SCAN , SCAN Scan_failed SCAN
 ◦ SCAN , **Scan** **ReScan**
 ALL



- Scan , Slave Module AIStatus Initial
 ◦ 가 ,

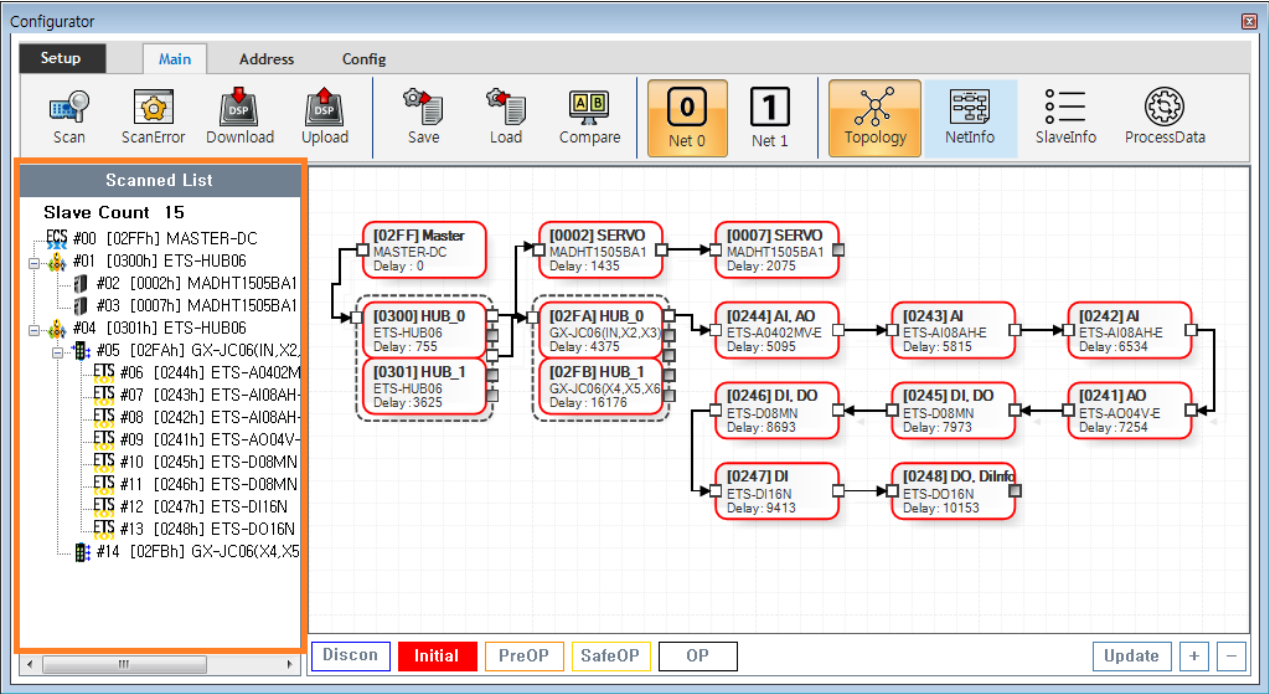


Master-DC

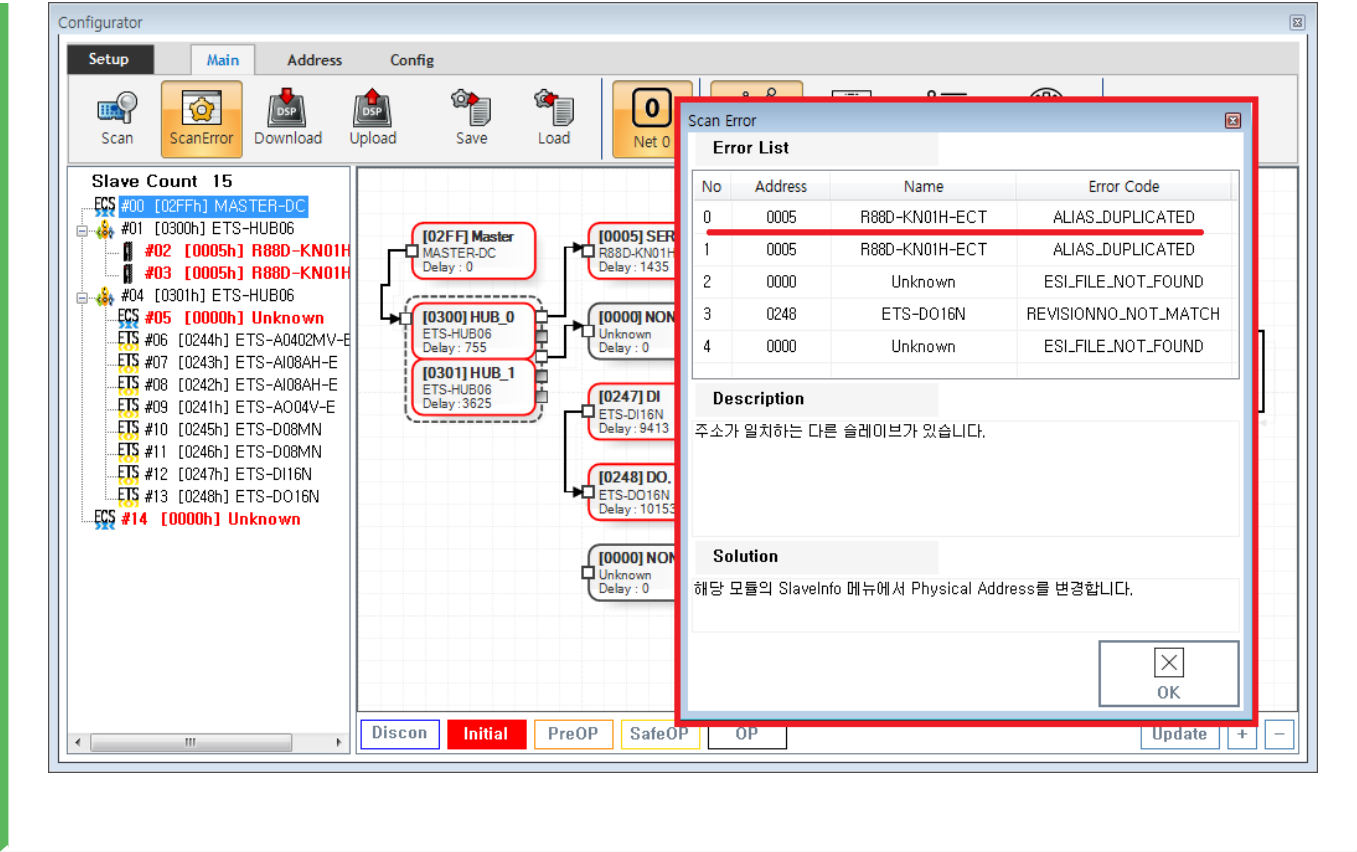
- Master-DC
- Slave Module , Master-DC

• Master DC가 , Scan Master-DC 가 .

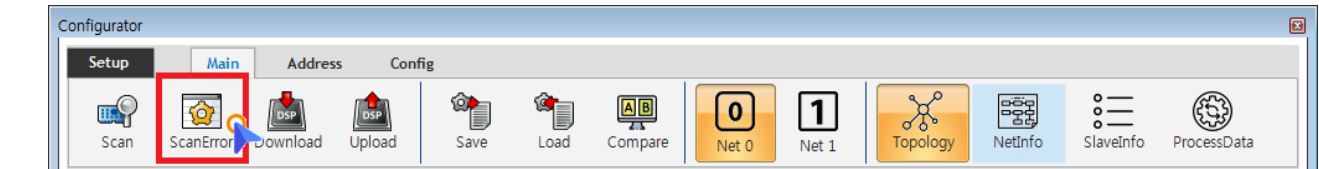
Scan



• Tree Slave가 , , Slave



- 가 ScanError List
- ErrorCode Scan Error 가



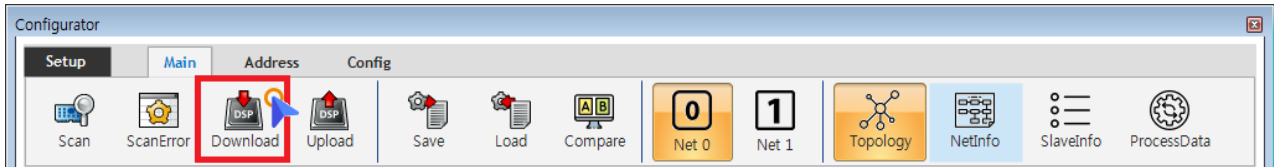
- Scan Error Main - ScanError ScanError List

× Warning!

Scan Download

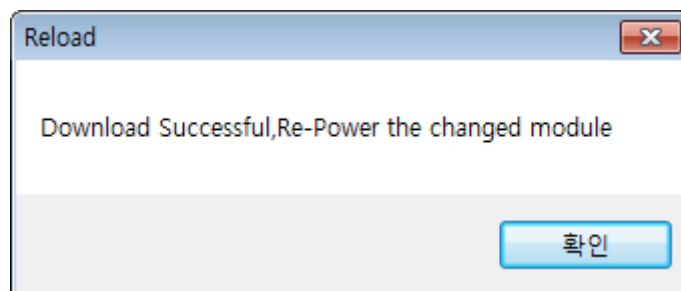
Download

- DownLoad / Slave Master

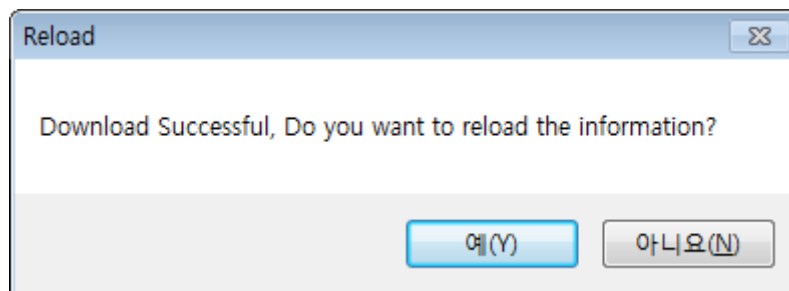


- Main - **Download**

- Scan Error가 , Download ScanError .
- ScanError가 Download 가 , AIStatus가 .



- EEPROM Data가 , Slave Module
 - Configuration Address
 - Slave Address가 ,



- ComilIDE

- “ ” .

Configuration Check

- Configuration , Slave AI Status 가 OP .

	○	, AI Status	.
•	Slave가 OP가	, OP	.

From:
<http://comizoa.com/info/> - -

Permanent link:
http://comizoa.com/info/doku.php?id=platform:ethercat:1_setup:10_config:20_configuration&rev=1587052223

Last update: **2024/07/08 18:22**