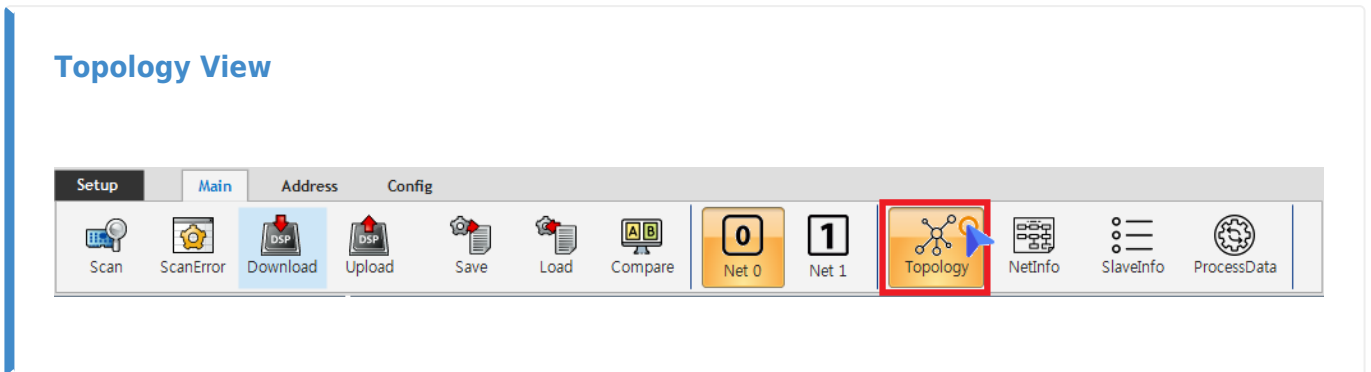


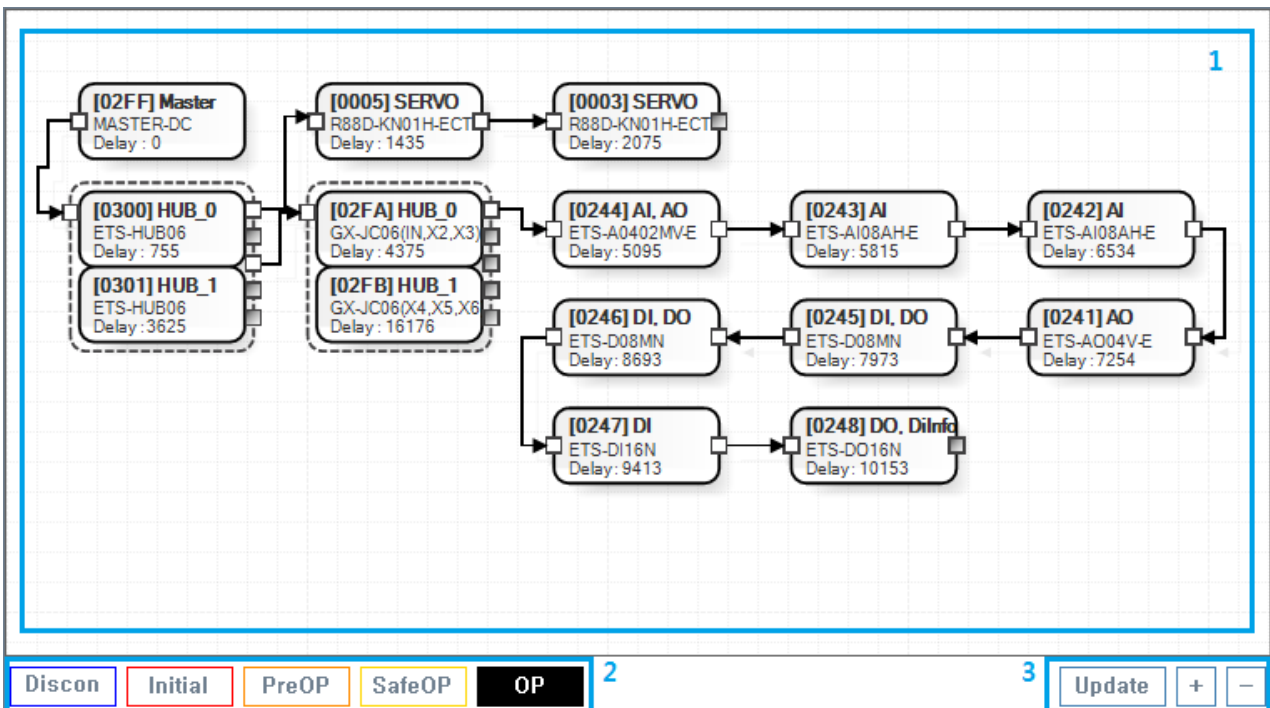
Topology View ..... 1  
..... 1  
1. Main View ..... 2  
2. [[platform:ethercat:2\_info:10\_alstatus | AI Status]] Control Panel ..... 4  
3. Display Control Panel ..... 4

# Topology View

× Configurator Topology View



- Topology

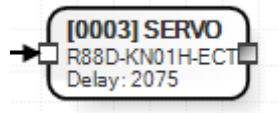


- 1. MainView : Table Line Topology
  - Slave
  - Slave ESC Memory Read / Write / Update
- 2. AI Status Control Panel
  - Slave AI Statue

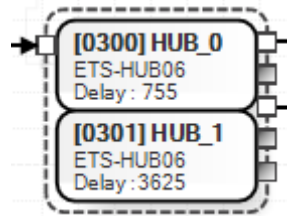
- 3. Display Control Panel
  - MainView

### 1. Main View

- Table ESC
- Table 가
  - Physical Address (Hexa)
  - SlaveType (Servo / DI / DO )
  - DC Delay
  - Port ,
  - AI Status

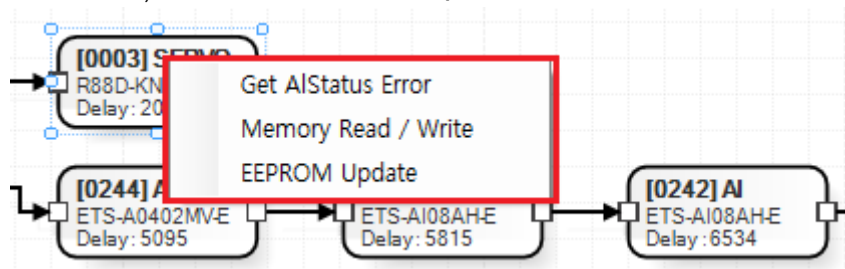


- - Physical Address : **0x0003**
  - SlaveType : **Servo**
  - DC Delay : **2075ns**
  - Port : 2 가 Port 1 port(Inport) (Open)
  - AIStatus : **OP**
- ESC가 , E-BUS

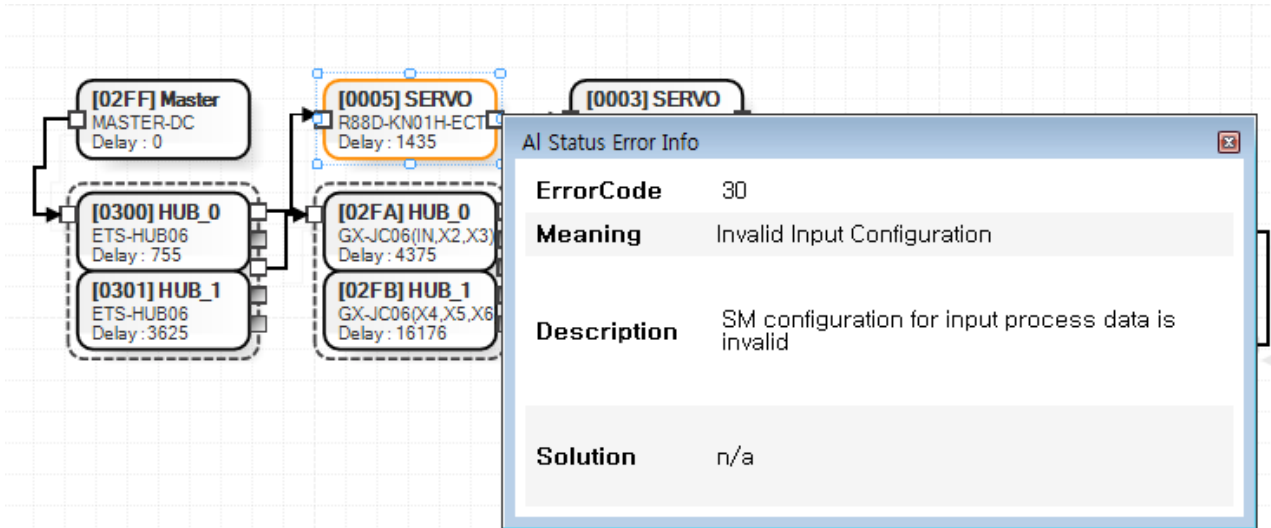


### Table

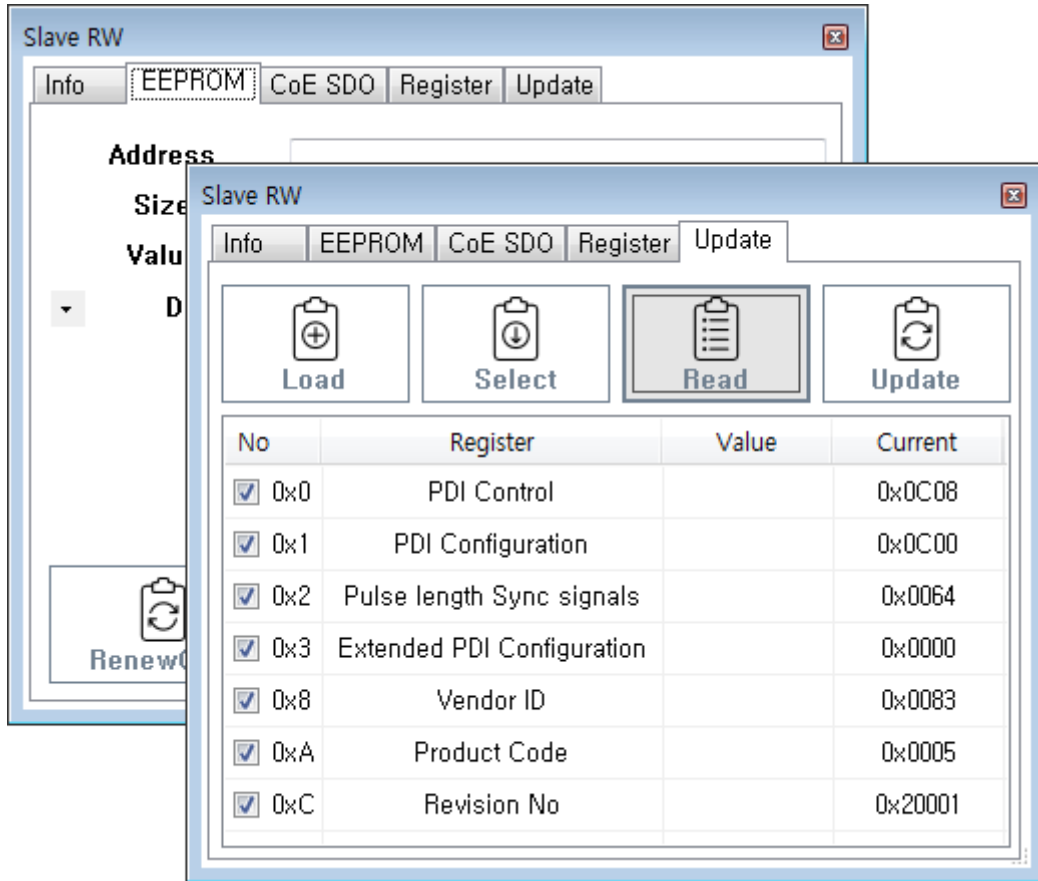
가



- Get AIStatus Error
  - AI Status가 , Error Code



- Memory Read / Write
  - EEPROM, Coe SDO, Register Read / Write
  - **SlaveR/W**
- EEPROM Update
  - EEPROM ConfigData Update
  - **SlaveR/W**



× **Warning!**

EEPROM\_READ\_FAILED ScanError 가 , Slave Topology가

2. **[[platform:ethercat:2\_info:10\_alstatus | AI Status]] Control Panel**

- Slave AI Status
- Disconnect AI Status가 Disconnect
- AI Status 가 , Get AIStatus Error Error
- AI Status ErrorCode 가 0 , **AI Status**

3. **Display Control Panel**

- **Update** : MainView

- + : MainView .
- - : MainView .

From:

<http://comizoa.com/info/> - -

Permanent link:

[http://comizoa.com/info/doku.php?id=platform:ethernet:1\\_setup:10\\_config:20\\_desc:10\\_topologyview&rev=1586240237](http://comizoa.com/info/doku.php?id=platform:ethernet:1_setup:10_config:20_desc:10_topologyview&rev=1586240237)

Last update: **2024/07/08 18:22**