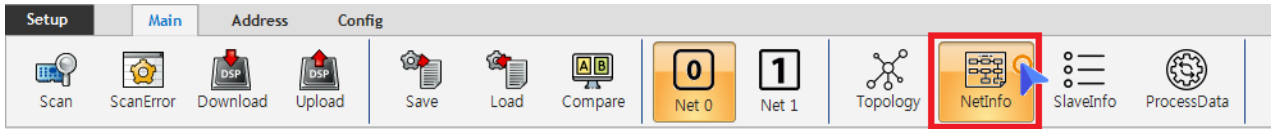


Net Info ..... 1  
..... 1  
Info ..... 1  
Logic Memory Section ..... 3  
Channel Map ..... 3

# Net Info

× Configurator Net Information Tab



- NetInfo
- Cycle Time
- Redundancy(            )
- Logic Memory Section
- DI / DO Channel Map
- AI / AO Channel MAP

## Info

Info   Logic Out   Logic In   DI/O Channel Map   AI/O Channel Map   FMMU   Driver PDO

---

**Cycle Time**

Cycle Time	<input type="text" value="1000"/>	μs (Min : 10μs / Max : 1000μs)
Process Time (Net)	<input type="text" value="60"/>	Cycle time of the DSP-Core0
ProcessTime(App)	<input type="text" value="36"/>	Cycle time of the DSP-Core 1

---

**Data Size**

Output	<input type="text" value="27"/>	Byte
Input	<input type="text" value="51"/>	Byte

---

**DC Setup**

Dc Offset	<input type="text" value="50000"/>	ns
-----------	------------------------------------	----

---

**Redundancy**

Redundancy (링 이중화) 사용

## Cycle Time

- Cycle Time
  - Download
    - 가 125 / 250 / 500 / 1000 / 2000 / 4000 , us
      - 32 <sup>1)</sup>, 500us 가
      - 16 , 250us 가
      - 8 , 125us 가
  - Process Time
    - Process Time (Net) : DSP-Core 0
    - Process Time (App) : DSP-Core 1
    - Process Time us

× ProcessTime CycleTime

## Data Size

- OutPut : Output Data . 2048 Byte
- Input : Input Data . 2048 Byte

## DC Setup

- **SyncMode**가 DC-Sync
  - - Master EtherCAT Frame
    -
  - Frame
    - 가
    - 가
    - 가
    - , 가 ( , )
  - Master EtherCAT Frame
    - **DC Offset**
    - ns , 50,000 50us
    - -999,999 ~ 999,999
    - (-) 가 , -50,000 , 50us Frame
  - - , DC-Offset
    - Frame 0 가 DC Offset 50,000 , 50us ,
    - 가
    - , DC-Offset

### Redundancy

- , “Redundancy( ) ” .

### Logic Memory Section

Info	Logic Memory Section - Output	Logic Memory - Input	DI/O Channel Map	AI/O Channel Map	
Start Address	Length	Type	Device	No	Alias
<b>DO</b>					
0	1	DO	ETS-D08MN	10	0245
1	1	DO	ETS-D08MN	11	0246
2	2	DO	ETS-D016N	13	0248
<b>AO</b>					
4	4	AO	ETS-A0402MV-E	6	0244
8	8	AO	ETS-A004V-E	9	0241
<b>SERVO</b>					
16	12	SERVO	R88D-KN01H-ECT	2	0005
28	12	SERVO	R88D-KN01H-ECT	3	0003

- (Input/Output) Slave가 Master Slave Frame .

### Channel Map

Info	Logic Memory Section - Output	Logic Memory - Input	DI/O Channel Map	AI/O Channel Map		
Start Channel	Channel Count	Start L-Address	Start L-Bit	Device	No	Alias
<b>Digital Input Channel Map</b>						
0	8	0	0	ETS-D08MN	10	0245
8	8	2	0	ETS-D08MN	11	0246
16	16	4	0	ETS-DI16N	12	0247
<b>Digital Output Channel Map</b>						
0	8	0	0	ETS-D08MN	10	0245
8	8	1	0	ETS-D08MN	11	0246
16	16	2	0	ETS-DO16N	13	0248

- Slave Type DI / DO / AI / AO Slave Global Channel Map
  - ex) 0x246 ETS-D08MN 8 ~ 15 Global Channel
- Channel Map **IO Channel Mapping**

1)  
COMI-LX554 64

From:  
<http://comizoa.com/info/> - -

Permanent link:  
[http://comizoa.com/info/doku.php?id=platform:ethercat:1\\_setup:10\\_config:20\\_desc:20\\_netinfo&rev=1671090772](http://comizoa.com/info/doku.php?id=platform:ethercat:1_setup:10_config:20_desc:20_netinfo&rev=1671090772)

Last update: **2024/07/08 18:22**