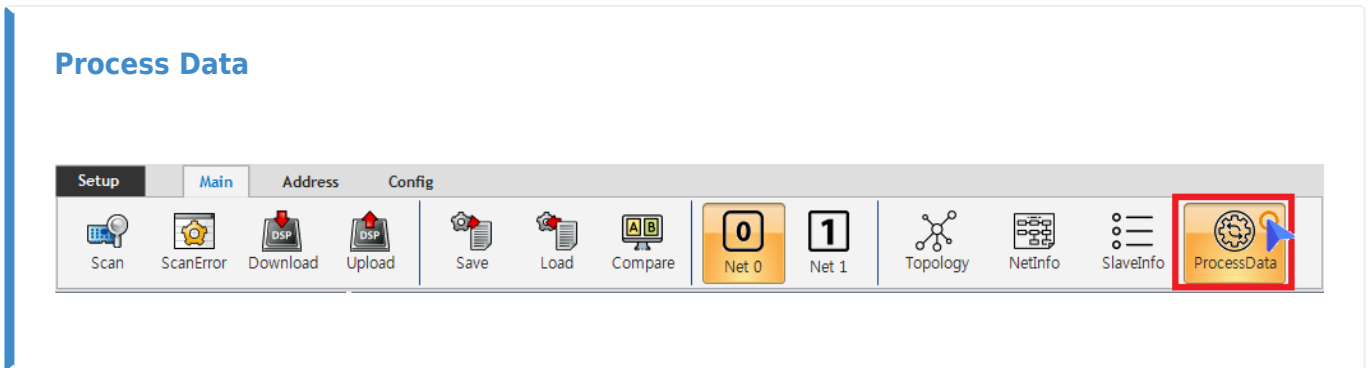


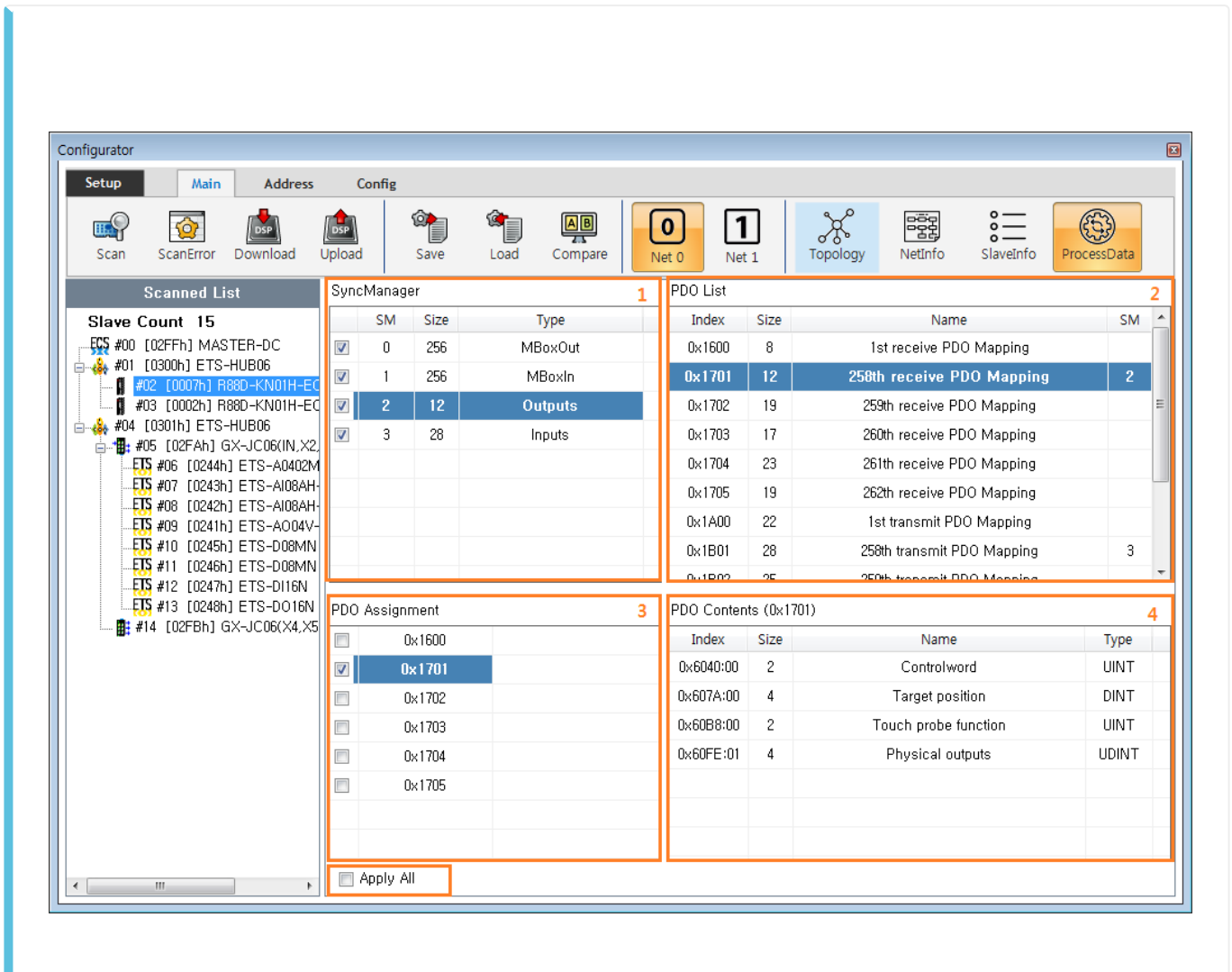
Process Data ..... 1  
..... 1  
Outputs ..... 2  
Inputs ..... 4  
PDO Map ..... 5

# Process Data

x Process Data



- ProcessData
- PDO<sup>1)</sup> Slave PDO , Contents



- 1. SyncManager
  - “MBoxOut”, “MBoxIn” <sup>2)</sup>
  - “Outputs”, “Inputs” PDO , Size Byte
  - PDO List SM
- 2. PDO List
  - “SyncManager” “Outputs” “Inputs”
  - Slave ESI PDO Map , SM
  - PDO Map PDO Contents
- 3. PDO Assignment
  - PDO Map
  - Map SyncManager Process Data
  - (excluded) <sup>3)</sup>
  - 가 가 <sup>4)</sup>
- 4. PDO Contents
  - PDO Map Object
  - 가
- 5. Apply All
  - <sup>5)</sup>

## Outputs

SyncManager

SM	Size	Type
0	256	MBoxOut
1	256	MBoxIn
2	9	Outputs
3	25	Inputs

PDO List

Index	Size	Name	SM
0x1600	9	Receive PDO mapping 1	2
0x1601	19	Receive PDO mapping 2	
0x1602	15	Receive PDO mapping 3	
0x1603	21	Receive PDO mapping 4	
0x1A00	23	Transmit PDO mapping 1	
0x1A01	25	Transmit PDO mapping 2	3
0x1A02	25	Transmit PDO mapping 3	
0x1A03	25	Transmit PDO mapping 4	

PDO Assignment

<input checked="" type="checkbox"/>	0x1600
<input type="checkbox"/>	0x1601
<input type="checkbox"/>	0x1602
<input type="checkbox"/>	0x1603

PDO Content (0x1A00)

Index	Size	Name	Type
0x6040:00	2	Controlword	UINT
0x6060:00	1	Modes of operation	SINT
0x607A:00	4	Target position	DINT
0x60B8:00	2	Touch probe function	UINT

- “Outputs” <sup>6)</sup> (Process Data)
- , 4 PDO (RxPDO)가 0x1600 PDO가
  - 0x1600 PDO Content Controlword, Modes of operation, Target position, TouchProbe function
  - , Torque , Torque
- PDO Assignment RxPDO

SyncManager

SM	Size	Type
0	256	MBoxOut
1	256	MBoxIn
2	19	Outputs
3	23	Inputs

PDO List

Index	Size	Name	SM
0x1600	9	Receive PDO mapping 1	
0x1601	19	Receive PDO mapping 2	2
0x1602	15	Receive PDO mapping 3	
0x1603	21	Receive PDO mapping 4	
0x1A00	23	Transmit PDO mapping 1	3
0x1A01	25	Transmit PDO mapping 2	
0x1A02	25	Transmit PDO mapping 3	
0x1A03	25	Transmit PDO mapping 4	

PDO Assignment

<input type="checkbox"/>	0x1600
<input checked="" type="checkbox"/>	0x1601
<input type="checkbox"/>	0x1602
<input type="checkbox"/>	0x1603

PDO Content (0x1A00)

Index	Size	Name	Type
0x6040:00	2	Controlword	UINT
0x6060:00	1	Modes of operation	SINT
0x6071:00	2	Target torque	INT
0x607A:00	4	Target position	DINT
0x6080:00	4	Max motor speed	UDINT
0x60B8:00	2	Touch probe function	UINT
0x60FF:00	4	Target velocity	DINT

- PDO 0x1601 , 0x1601 PDO Content 가
  - 0x1600 Target torque Max motor speed가 가
  - , Torque 가 가 .

Inputs

SyncManager

SM	Size	Type
0	256	MBoxOut
1	256	MBoxIn
2	9	Outputs
3	25	Inputs

PDO List

Index	Size	Name	SM
0x1600	9	Receive PDO mapping 1	2
0x1601	19	Receive PDO mapping 2	
0x1602	15	Receive PDO mapping 3	
0x1603	21	Receive PDO mapping 4	
0x1A00	23	Transmit PDO mapping 1	
0x1A01	25	Transmit PDO mapping 2	3
0x1A02	25	Transmit PDO mapping 3	
0x1A03	25	Transmit PDO mapping 4	

PDO Assignment

<input type="checkbox"/>	0x1A00	
<input checked="" type="checkbox"/>	0x1A01	
<input type="checkbox"/>	0x1A02	
<input type="checkbox"/>	0x1A03	

PDO Content (0x1A00)

Index	Size	Name	Type
0x603F:00	2	Error code	UINT
0x6041:00	2	Statusword	UINT
0x6061:00	1	Modes of operation display	SINT
0x6064:00	4	Position actual value	DINT
0x606C:00	4	Velocity actual value	DINT
0x6077:00	2	Torque actual value	INT
0x60B9:00	2	Touch probe status	UINT

- “Inputs” (Process Data)
- , 4 PDO (TxPDO)가 0x1A01 PDO가
  - 0x1A01 PDO Content
  - , PDO Content Torque actual value torque

PDO Map



- PDO Content

EDIT



- EDIT                      processData                      가                      Object                      .
- /                      가 가                      .

1)  
CANopen Process Data Object

2)  
,    Data

3) , 4)  
ESI

5)  
VendorID    ProductCode가

6)  
Data                      RxPDO

7)  
Data                      TxPDO

From:  
<http://comizoa.com/info/> - -

Permanent link:  
[http://comizoa.com/info/doku.php?id=platform:ethercat:1\\_setup:10\\_config:20\\_desc:40\\_processdata&rev=1586751700](http://comizoa.com/info/doku.php?id=platform:ethercat:1_setup:10_config:20_desc:40_processdata&rev=1586751700)

Last update: **2024/07/08 18:22**