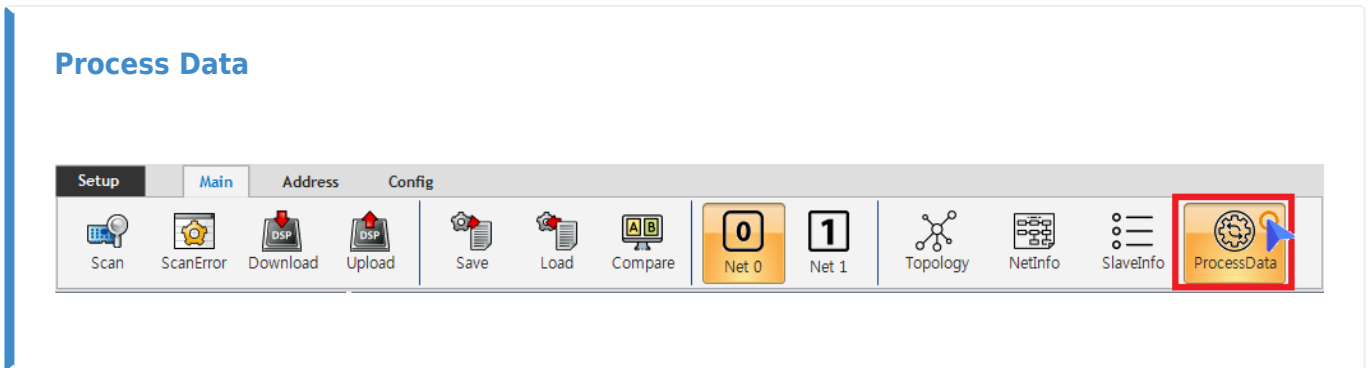


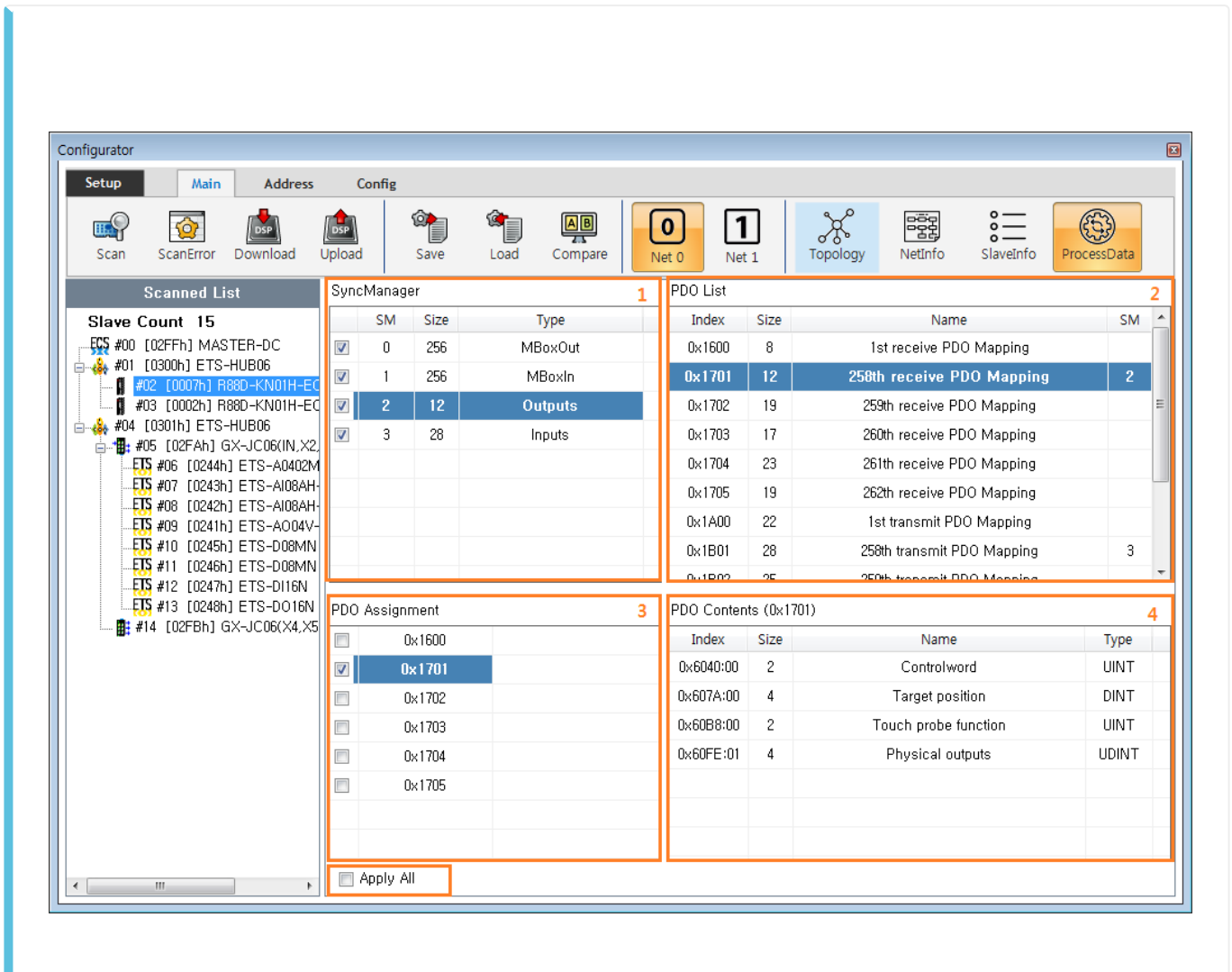
Process Data ..... 1  
..... 1  
Outputs ..... 2  
Inputs ..... 4  
PDO Map ..... 5

# Process Data

x Process Data



- ProcessData
- PDO<sup>1)</sup> Slave PDO , Contents



- 1. SyncManager
  - “MBoxOut”, “MBoxIn” <sup>2)</sup>
  - “Outputs”, “Inputs” PDO , Size Byte
  - PDO List SM
- 2. PDO List
  - “SyncManager” “Outputs” “Inputs”
  - Slave ESI PDO Map , SM
  - PDO Map Object가 PDO Contents
- 3. PDO Assignment
  - PDO Map
  - Map SyncManager Process Data
  - (excluded) <sup>3)</sup>
  - 가 가 <sup>4)</sup>
- 4. PDO Contents
  - PDO Map Object
  - 가
- 5. Apply All
  - <sup>5)</sup>

## Outputs

SyncManager

SM	Size	Type
0	256	MBoxOut
1	256	MBoxIn
2	9	Outputs
3	25	Inputs

PDO List

Index	Size	Name	SM
0x1600	9	Receive PDO mapping 1	2
0x1601	19	Receive PDO mapping 2	
0x1602	15	Receive PDO mapping 3	
0x1603	21	Receive PDO mapping 4	
0x1A00	23	Transmit PDO mapping 1	
0x1A01	25	Transmit PDO mapping 2	3
0x1A02	25	Transmit PDO mapping 3	
0x1A03	25	Transmit PDO mapping 4	

PDO Assignment

<input checked="" type="checkbox"/>	0x1600
<input type="checkbox"/>	0x1601
<input type="checkbox"/>	0x1602
<input type="checkbox"/>	0x1603

PDO Content (0x1A00)

Index	Size	Name	Type
0x6040:00	2	Controlword	UINT
0x6060:00	1	Modes of operation	SINT
0x607A:00	4	Target position	DINT
0x60B8:00	2	Touch probe function	UINT

- “Outputs” <sup>6)</sup> (Process Data)
- , 4 PDO (RxPDO)가 0x1600 PDO가
  - 0x1600 PDO Content Controlword, Modes of operation, Target position, TouchProbe function
  - , Torque , Torque
- PDO Assignment RxPDO

SyncManager

SM	Size	Type
0	256	MBoxOut
1	256	MBoxIn
2	19	Outputs
3	23	Inputs

PDO List

Index	Size	Name	SM
0x1600	9	Receive PDO mapping 1	
0x1601	19	Receive PDO mapping 2	2
0x1602	15	Receive PDO mapping 3	
0x1603	21	Receive PDO mapping 4	
0x1A00	23	Transmit PDO mapping 1	3
0x1A01	25	Transmit PDO mapping 2	
0x1A02	25	Transmit PDO mapping 3	
0x1A03	25	Transmit PDO mapping 4	

PDO Assignment

<input type="checkbox"/>	0x1600
<input checked="" type="checkbox"/>	0x1601
<input type="checkbox"/>	0x1602
<input type="checkbox"/>	0x1603

PDO Content (0x1A00)

Index	Size	Name	Type
0x6040:00	2	Controlword	UINT
0x6060:00	1	Modes of operation	SINT
0x6071:00	2	Target torque	INT
0x607A:00	4	Target position	DINT
0x6080:00	4	Max motor speed	UDINT
0x60B8:00	2	Touch probe function	UINT
0x60FF:00	4	Target velocity	DINT

- PDO 0x1601 , 0x1601 PDO Content 가
  - 0x1600 Target torque Max motor speed가 가
  - , Torque 가 가

Inputs

SyncManager

SM	Size	Type
0	256	MBoxOut
1	256	MBoxIn
2	9	Outputs
3	25	Inputs

PDO List

Index	Size	Name	SM
0x1600	9	Receive PDO mapping 1	2
0x1601	19	Receive PDO mapping 2	
0x1602	15	Receive PDO mapping 3	
0x1603	21	Receive PDO mapping 4	
0x1A00	23	Transmit PDO mapping 1	
0x1A01	25	Transmit PDO mapping 2	3
0x1A02	25	Transmit PDO mapping 3	
0x1A03	25	Transmit PDO mapping 4	

PDO Assignment

<input type="checkbox"/>	0x1A00	
<input checked="" type="checkbox"/>	0x1A01	
<input type="checkbox"/>	0x1A02	
<input type="checkbox"/>	0x1A03	

PDO Content (0x1A00)

Index	Size	Name	Type
0x603F:00	2	Error code	UINT
0x6041:00	2	Statusword	UINT
0x6061:00	1	Modes of operation display	SINT
0x6064:00	4	Position actual value	DINT
0x606C:00	4	Velocity actual value	DINT
0x6077:00	2	Torque actual value	INT
0x60B9:00	2	Touch probe status	UINT

- “Inputs” (Process Data)
- , 4 PDO (TxPDO)가 0x1A01 PDO가
  - 0x1A01 PDO Content
  - , PDO Content Torque actual value torque

PDO Map

**SyncManager**

	SM	Size	Type
<input checked="" type="checkbox"/>	0	256	MBoxOut
<input checked="" type="checkbox"/>	1	256	MBoxIn
<input checked="" type="checkbox"/>	2	12	Outputs
<input checked="" type="checkbox"/>	3	28	Inputs

**PDO List**

Index	Size	Name	SM
0x1600	8	1st receive PDO Mapping	
0x1701	12	258th receive PDO Mapping	2
0x1702	19	259th receive PDO Mapping	
0x1703	17	260th receive PDO Mapping	
0x1704	23	261th receive PDO Mapping	
0x1705	19	262th receive PDO Mapping	

**PDO Assignment**

<input type="checkbox"/>	0x1600	
<input checked="" type="checkbox"/>	0x1701	
<input type="checkbox"/>	0x1702	
<input type="checkbox"/>	0x1703	
<input type="checkbox"/>	0x1704	
<input type="checkbox"/>	0x1705	

Apply All

**PDO Contents (0x1701)**

Index	Size	Name	Type
0x6040:00	2	Controlword	UINT
0x607A:00	4	Target position	DINT
0x60B8:00	2	Touch probe function	UINT
0x60FE:01	4	Physical outputs	UDINT

• PDO Content

**EDIT**

**PDO Editor**

- [0x4103:00] Coordinate System Setting Mode
- [0x4104:00] Coordinate System Setting Position
- [0x6040:00] Controlword
- [0x6060:00] Modes of operation
- [0x6071:00] Target torque
- [0x6072:00] Max torque
- [0x607A:00] Target position
- [0x607F:00] Max profile velocity
- [0x6081:00] Profile velocity
- [0x6086:00] Motion profile type
- [0x60B0:00] Position offset
- [0x60B1:00] Velocity offset
- [0x60B2:00] Torque offset
- [0x60B8:00] Touch probe function
- [0x60FE:00] Positive torque limit value

OK

• EDIT

ProcessData

가

Object

- / 가 가 .
- Edit OK .

SyncManager

	SM	Size	Type
<input checked="" type="checkbox"/>	0	256	MBoxOut
<input checked="" type="checkbox"/>	1	256	MBoxIn
<input checked="" type="checkbox"/>	2	17	Outputs
<input checked="" type="checkbox"/>	3	28	Inputs

PDO List

Index	Size	Name	SM
0x1600	8	1st receive PDO Mapping	
0x1701	12	258th receive PDO Mapping	2
0x1702	19	259th receive PDO Mapping	
0x1703	17	260th receive PDO Mapping	
0x1704	23	261th receive PDO Mapping	
0x1705	19	262th receive PDO Mapping	
0x1A00	22	1st transmit PDO Mapping	

PDO Assignment

<input type="checkbox"/>	0x1600	
<input checked="" type="checkbox"/>	0x1701	
<input type="checkbox"/>	0x1702	
<input type="checkbox"/>	0x1703	
<input type="checkbox"/>	0x1704	
<input type="checkbox"/>	0x1705	

Apply All

PDO Contents (0x1701)

Index	Size	Name	Type
0x6040:00	2	Controlword	UINT
0x6060:00	1	Modes of operation	SINT
0x607A:00	4	Target position	DINT
0x6081:00	4	Profile velocity	UDINT
0x60B8:00	2	Touch probe function	UINT
0x60FE:01	4	Physical outputs	UDINT

1) CANopen Process Data Object

2) , Data

3) 4) ,  
ESI

5) VendorID ProductCode가

6) Data RxPDO

7) Data TxPDO

From: <http://comizoa.com/info/> - -

Permanent link: [http://comizoa.com/info/doku.php?id=platform:ethercat:1\\_setup:10\\_config:20\\_desc:40\\_processdata&rev=1586752182](http://comizoa.com/info/doku.php?id=platform:ethercat:1_setup:10_config:20_desc:40_processdata&rev=1586752182)

Last update: 2024/07/08 18:22