

DSP_NOT_RUNNING 1
ESI_FILE_NOT_FOUND 1
EEPROM_READ_FAILED 1
REVISIONNO_NOT_MATCH 1
SLOT_SCAN_FAILED 3
ALIAS_DUPLICATED 3
REVERSE_CONNECTED_SLAVE 3
ALSTATE_NOT_INIT 4

Configurator

× Configuration SCAN

Error

.

DSP_NOT_RUNNING

- Master DSP(Fimrware)가 .
- PC .

ESI_FILE_NOT_FOUND

- **ESI File(.xml)** .
- ESI ¹⁾ .\ComiIDE\Data\Xml , Configurator .

EEPROM_READ_FAILED

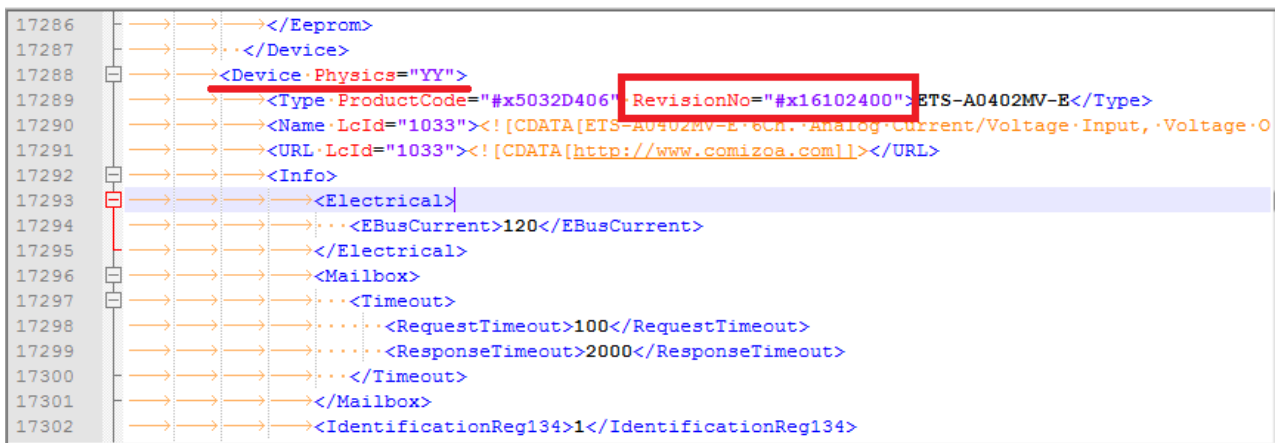
- EEPROM VendorID, ProductCode, RevisionNO
 ◦ ESI File(.xml)
- SCAN .

REVISIONNO_NOT_MATCH

- ESI File(.xml) RevisionNo 가
 ◦ ESI 가 ²⁾ .



- RevisionNo SlaveInfo Tab RevisionNo



- ESI "RevisionNo" 가
- RevisionNo가 Device 가 ESI 3) .\ComilIDE\Data\Xml , Configurator

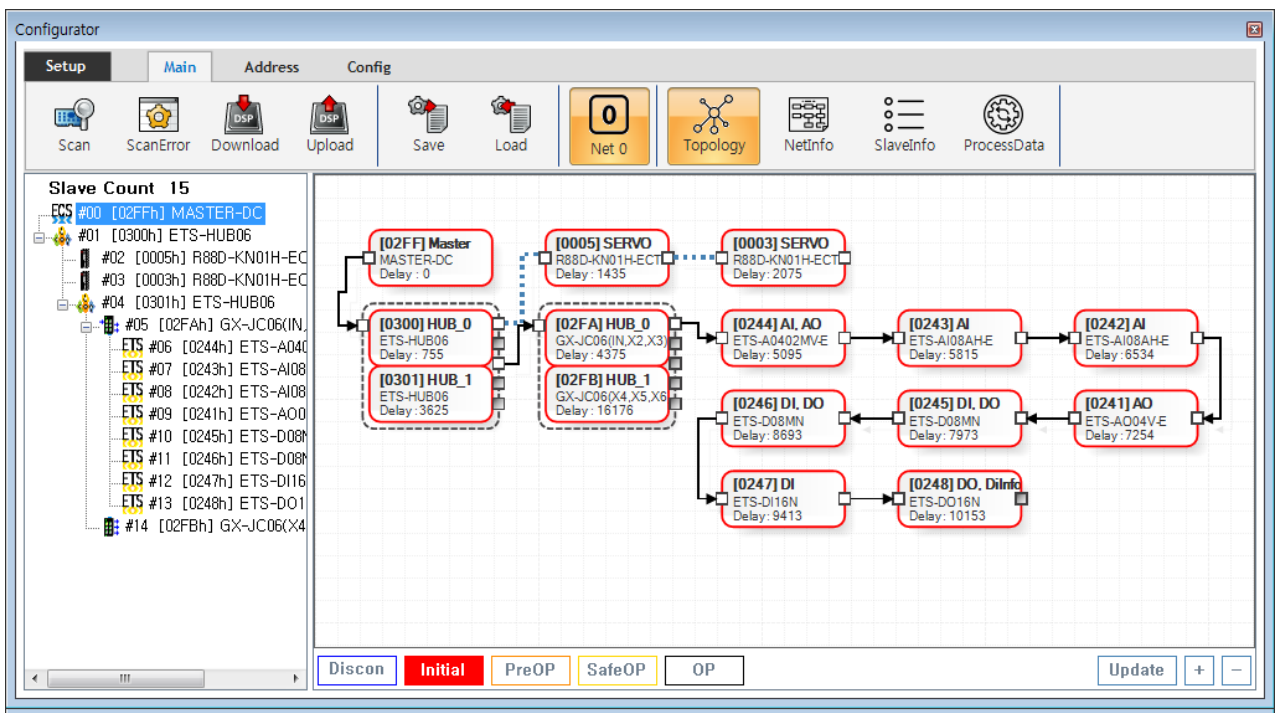
SLOT_SCAN_FAILED

- MDP Profile
 - ProcessData 가 , Master
 - Download , PDO Data가 OP Status
- SlotInfo Slot 가

ALIAS_DUPLICATED

- 가 가
-

REVERSE_CONNECTED_SLAVE



- InPort OutPort 가
 - TopologyView
- In/Out Port
 - Port 가 , / Port가 InPort

ALSTATE_NOT_INIT

- AI Status 가 Initial
◦ AI Status 가 Initial , EEPROM Read Failed
- , Scan .

1)

2)

SW(Firmware) RevisionNo

3)

From:

<http://comizoa.com/info/> - -

Permanent link:

http://comizoa.com/info/doku.php?id=platform:ethercat:1_setup:10_config:ts:10_scan_error&rev=1586177392

Last update: **2024/07/08 18:22**