

DSP\_NOT\_RUNNING ..... 1  
ESI\_FILE\_NOT\_FOUND ..... 1  
EEPROM\_READ\_FAILED ..... 1  
REVISIONNO\_NOT\_MATCH ..... 1  
SLOT\_SCAN\_FAILED ..... 3  
ALIAS\_DUPLICATED ..... 3  
REVERSE\_CONNECTED\_SLAVE ..... 3  
ALSTATE\_NOT\_INIT ..... 4

# Scan Error

× Configuration SCAN

Error

## DSP\_NOT\_RUNNING

- Master DSP(Fimrware)가
- PC
- **12V**

## ESI\_FILE\_NOT\_FOUND

- **ESI File(.xml)**
- ESI <sup>1)</sup> .\ComiIDE\Data\Xml , Configurator

## EEPROM\_READ\_FAILED

- EEPROM VendorID, ProductCode, RevisionNO  
  - ESI File(.xml)
- SCAN

## REVISIONNO\_NOT\_MATCH

- ESI File(.xml) RevisionNo 가  
  - ESI 가 <sup>2)</sup>



- RevisionNo **SlaveInfo** Tab RevisionNo



- ESI "RevisionNo" Device Type Node 가
- RevisionNo가 Device 가 ESI 3) '.\ComiIDE\Data\Xml' , Configurator

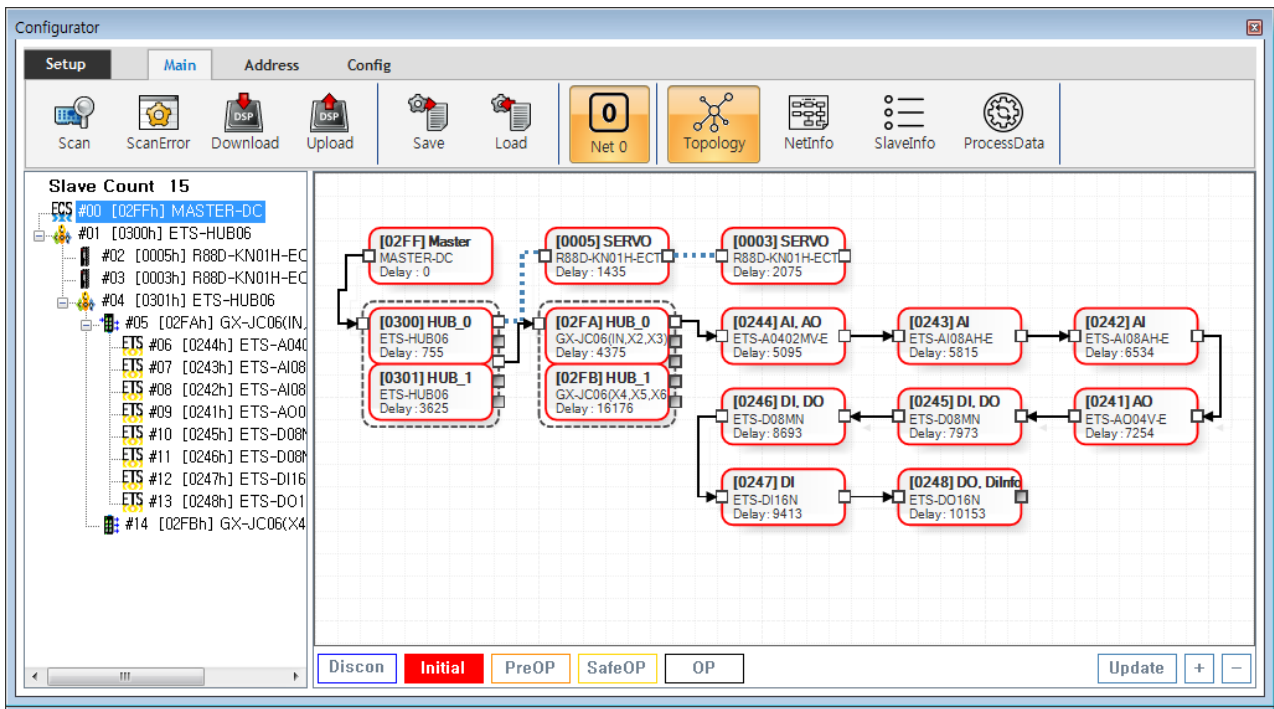
### SLOT\_SCAN\_FAILED

- MDP Profile 가
  - ProcessData 가 , Master
  - Download , PDO Data가 OP Status
- SlotInfo Slot 가

### ALIAS\_DUPLICATED

- 가 가
- 

### REVERSE\_CONNECTED\_SLAVE



- InPort OutPort 가

- TopologyView .
- In/Out Port  
◦ Port 가 , / Port가 InPort .

### ALSTATE\_NOT\_INIT

- AI Status 가 Initial  
◦ AI Status 가 Initial , EEPROM Read Failed
- , Scan .

1)

2)

SW(Firmware ) RevisionNo

3)

From:  
<http://comizoa.com/info/> - -

Permanent link:  
[http://comizoa.com/info/doku.php?id=platform:ethercat:1\\_setup:10\\_config:ts:10\\_scan\\_error&rev=1586181004](http://comizoa.com/info/doku.php?id=platform:ethercat:1_setup:10_config:ts:10_scan_error&rev=1586181004)

Last update: **2024/07/08 18:22**