

DSP_NOT_RUNNING	1
ESI_FILE_NOT_FOUND	1
EEPROM_READ_FAILED	1
REVISIONNO_NOT_MATCH	1
SLOT_SCAN_FAILED	3
ALIAS_DUPLICATED	3
REVERSE_CONNECTED_SLAVE	3
ALSTATE_NOT_INIT	4

Scan Error

x Configuration

SCAN

Error

.

DSP_NOT_RUNNING

- Master DSP(Fimrware)가 .
- PC .
- 12V .

ESI_FILE_NOT_FOUND

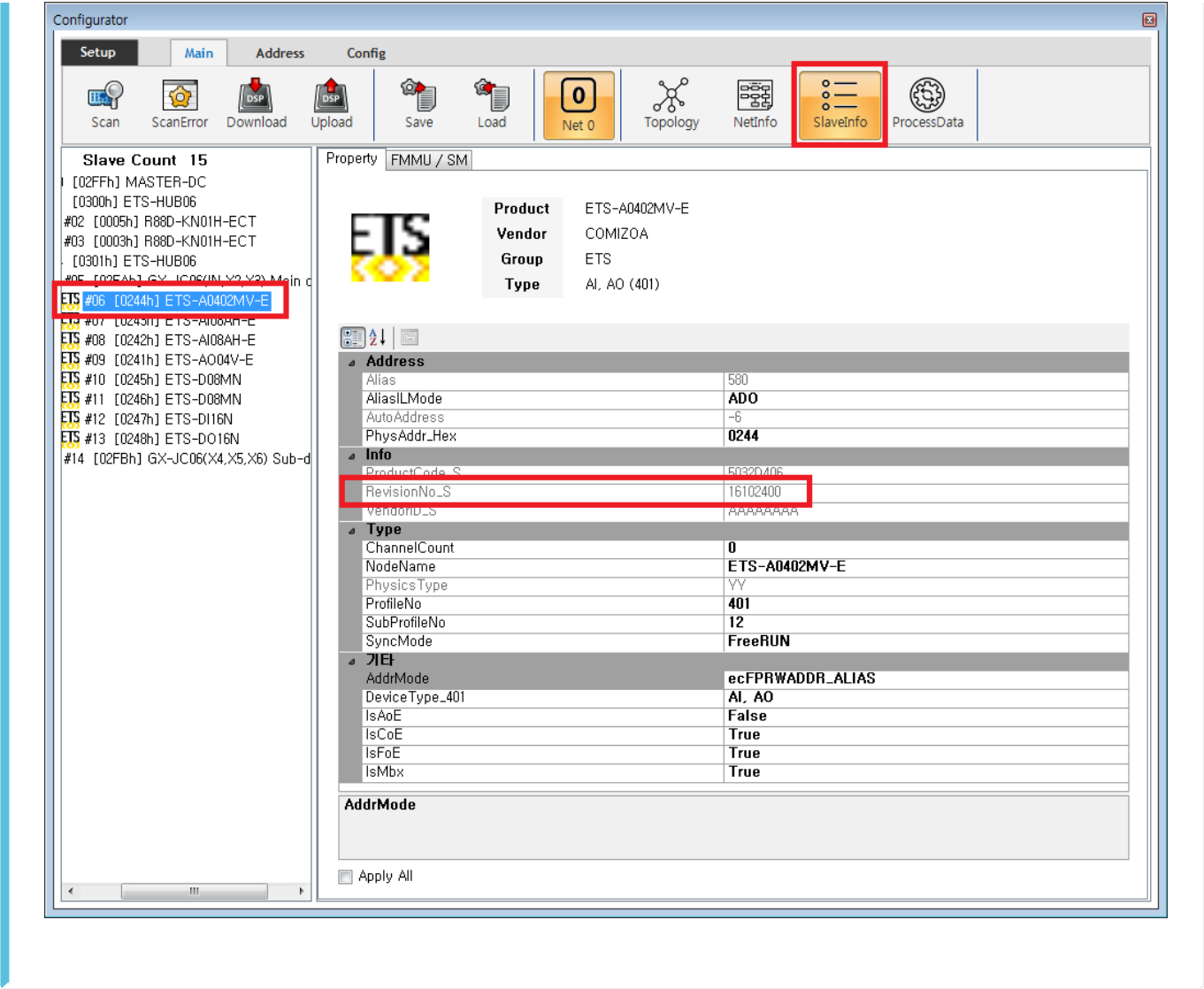
- ESI File(.xml) .
- ESI ¹⁾ .\ComilDE\Data\Xml , Configurator .

EEPROM_READ_FAILED

- EEPROM VendorID, ProductCode, RevisionNO
◦ ESI File(.xml)
- SCAN .

REVISIONNO_NOT_MATCH

- ESI File(.xml) RevisionNo 가 .
◦ ESI 가 ²⁾ .



• RevisionNo **SlaveInfo** Tab RevisionNo .



• ESI "RevisionNo" Device Type Node 가 .

• RevisionNo가 Device 가 ESI 3) '.\ComiIDE\Data\Xml'

, Configurator .

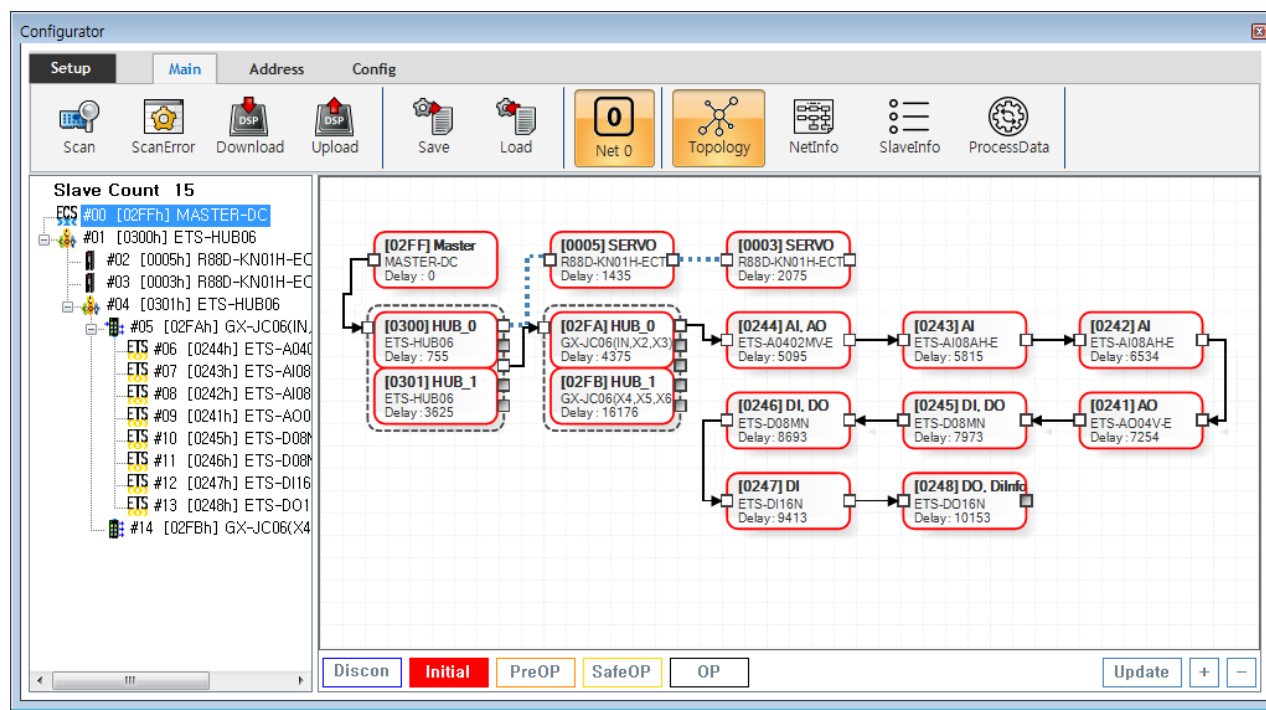
SLOT_SCAN_FAILED

- MDP Profile 가
 - ProcessData 가 , Master
 - Download , PDO Data가 OP Status
- SlotInfo Slot 가

ALIAS DUPLICATED

- 가 가 .
-

REVERSE_CONNECTED_SLAVE



- InPort OutPort 가

- TopologyView
 - In/Out Port가 , / Port가 InPort .

ALSTATE_NOT_INIT

- AI Status 가 Initial
 - AI Status 가 Initial , EEPROM Read Failed
- , Scan .

1)

2)

3)

SW(Firmware) RevisionNo

From:
<http://comizoa.com/info/> - -

Permanent link:
http://comizoa.com/info/doku.php?id=platform:ethercat:1_setup:10_config:ts:10_scan_error&rev=1586784693

Last update: 2024/07/08 18:22