

Scan Error	1
DSP_NOT_RUNNING	1
ESI_FILE_NOT_FOUND	1
EEPROM_READ_FAILED	1
REVISIONNO_NOT_MATCH	1
SLOT_SCAN_FAILED	3
ALIAS_DUPLICATED	3
REVERSE_CONNECTED_SLAVE	3
ALSTATE_NOT_INIT	4

Scan Error

× Configuration SCAN

Error

.

DSP_NOT_RUNNING

- Master DSP(Fimrware)가
- PC
- **12V**

ESI_FILE_NOT_FOUND

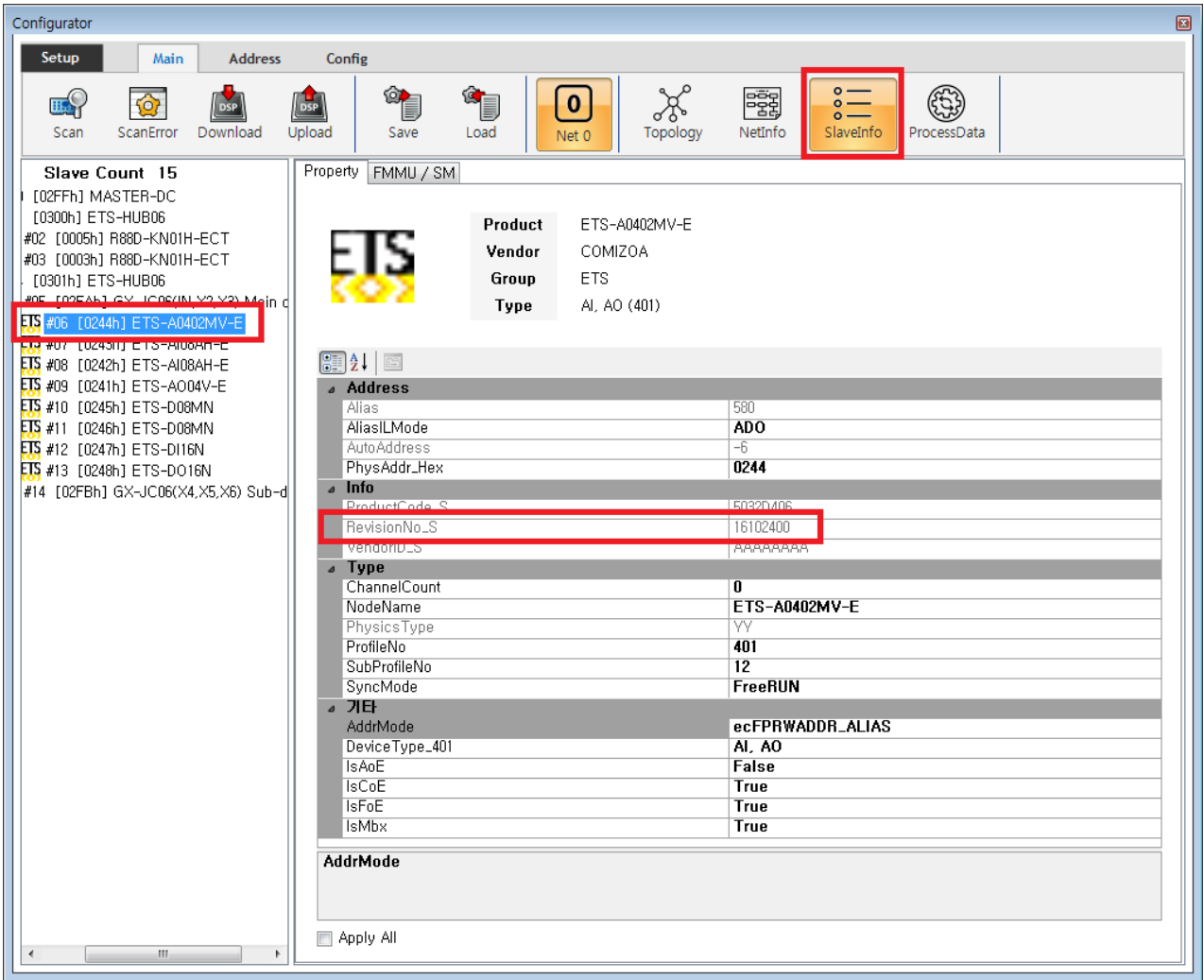
- **ESI File(.xml)**
- ESI ¹⁾ .\ComiIDE\Data\Xml , Configurator

EEPROM_READ_FAILED

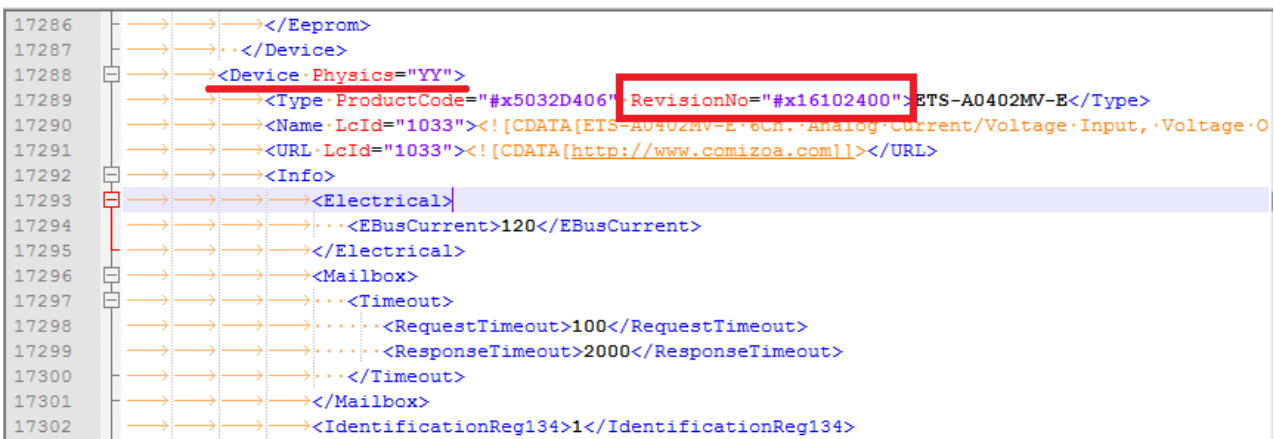
- EEPROM VendorID, ProductCode, RevisionNO
 - ESI File(.xml)
- **EEPROM Read Failed**
 - Master AIStatus Initial
 - Initial Slave
 - Slave AIStatus가 , SCAN

REVISIONNO_NOT_MATCH

- ESI File(.xml) RevisionNo 가
 - ESI 가 ²⁾



- RevisionNo **SlaveInfo** Tab RevisionNo



- ESI "RevisionNo" Device Type Node 가
- RevisionNo가 Device 가 ESI 3) '\\ComiIDE\Data\Xml' , Configurator

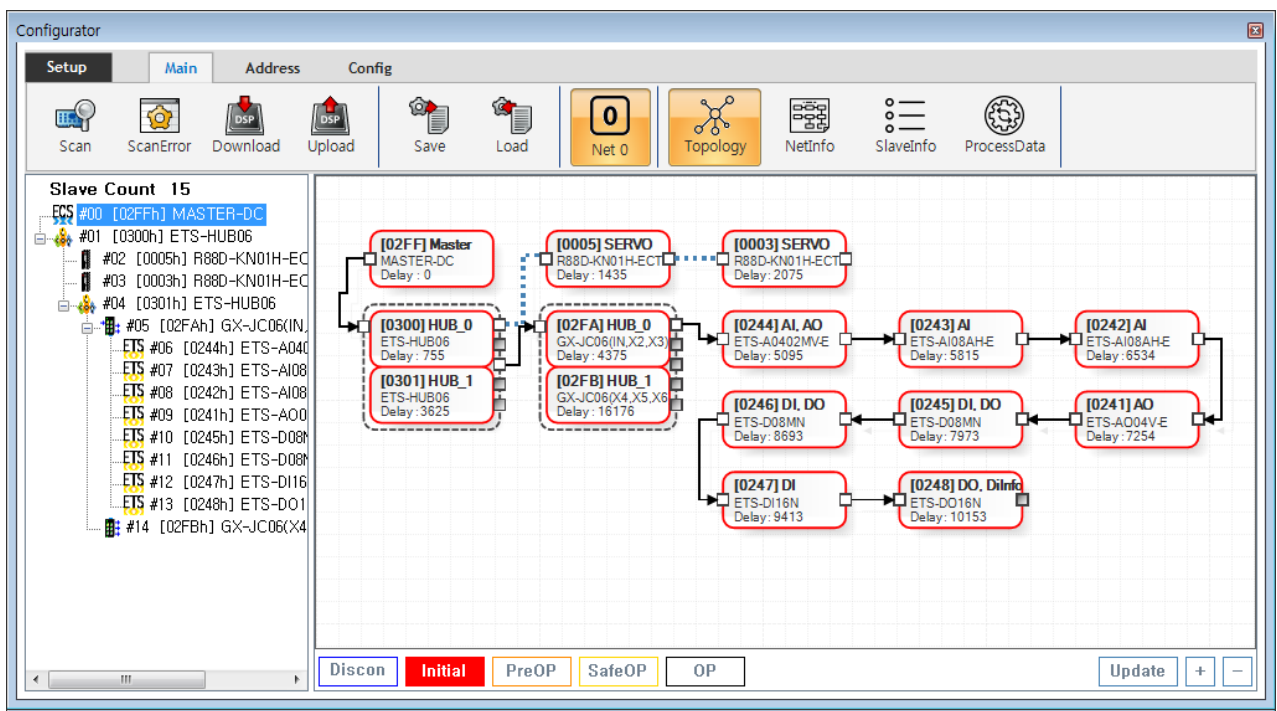
SLOT_SCAN_FAILED

- MDP Profile 가
 - ProcessData 가 , Master
 - Download , PDO Data가 OP Status
- SlotInfo Slot 가 Setup Read 0xF050

ALIAS_DUPLICATED

- 가 가
- DeviceID Switch Address Address read failed

REVERSE_CONNECTED_SLAVE



- InPort OutPort 가 .
- TopologyView .
- In/Out Port .
- Port 가 , / Port가 InPort .

ALSTATE_NOT_INIT

- AI Status 가 Initial .
- AI Status 가 Initial , EEPROM Read Failed
- , Scan .

1)

2)

SW(Firmware) RevisionNo

3)

From:

<http://comizoa.com/info/> - -

Permanent link:

http://comizoa.com/info/doku.php?id=platform:ethercat:1_setup:10_config:ts:10_scan_error&rev=1607069708

Last update: **2024/07/08 18:22**