

OP ..... 1  
  AIStatus Error ..... 1  
  Case 1 ..... 1  
  Case 2 ..... 1  
  Case 3 ..... 2  
  Case 4 ..... 2  
  Case 5 ..... 2  
  Case 6 ..... 3

# OP

× AIState가 OP-State

**AIStatus Error**

- Slave가 OP
  - **AI Status Error**
- 

**Case 1**

- Slave Address ,
- Slave Address Slave 가
- , EtherCAT Master가 Address<sup>1)</sup> Slave <sup>2)</sup>가
- Slave

**Case 2**

- x64 OS 'ComiECatConfig\_x64' Configuration x86 Application
- x64 OS 'ComiECatConfig\_x64' Configuration ,
  - CEcatNetCfg\_#\_#.cec<sup>3)</sup> C:\Windows\System32
- x86 Application c:\Windows\SysWow64
  - x64 Application C:\Windows\System32
- Configuration 가 OP
  - Configuration DeviceLoad Master Device Load x64 Application , x86 Application

- ComilDE Configuration .
- 'ComiECatConfig\_x86' Configuration .
- 'ComiECatConfig\_x64' Configuration . 'CEcatNetCfg\_#\_#.cec'  
c:\Windows\SysWow64 C:\Windows\System32

### Case 3

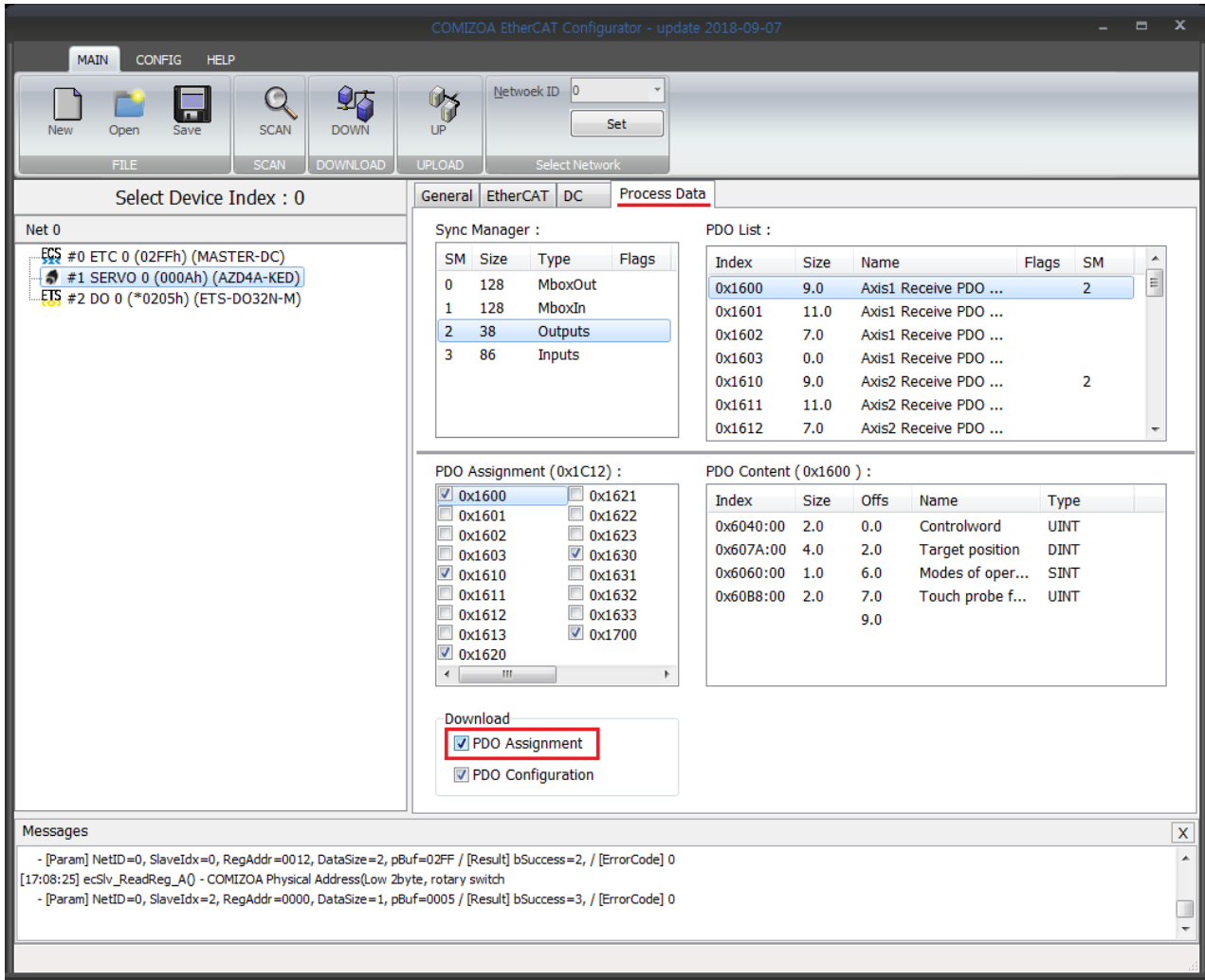
- MDP Type Slave Slot Module 가
- **Slot Module 가**

### Case 4

- ProcessData Assign
- **LS MECAPION : SafeOP**

### Case 5

- PDO Assign



- EcatConfig PDO Assignment .

```

<Mailbox DataLinkLayer="1">
  <CoE SdoInfo="1" PdoAssign="1" PdoConfig="1" CompleteAccess="0" SegmentedSdo="1" DiagHistory="1">
    <InitCmd>
      <Transition>PS</Transition>
      <Index>#x6060</Index>
      <SubIndex>0</SubIndex>
      <Data>08</Data>
    </InitCmd>
  </CoE>
</Mailbox>

```

- xml : PdoAssign="0" → PdoAssign="1"

## Case 6

- ComiEcatConfig 가 , OP
- EcatConfig(2016/03/07) SlaveListMode “ ”
  - Addressing , Scan Index
- 'ComilDE' Configuration .
- 2016/03/07 EcatConfig .
- 2016/03/07 'EcatConfig' “ ”

1)

2)

3)

### Configuration

From: <http://comizoa.com/info/> - -

Permanent link: [http://comizoa.com/info/doku.php?id=platform:ethercat:1\\_setup:10\\_config:ts:30\\_safeop\\_failed&rev=1586857834](http://comizoa.com/info/doku.php?id=platform:ethercat:1_setup:10_config:ts:30_safeop_failed&rev=1586857834)

Last update: **2024/07/08 18:22**