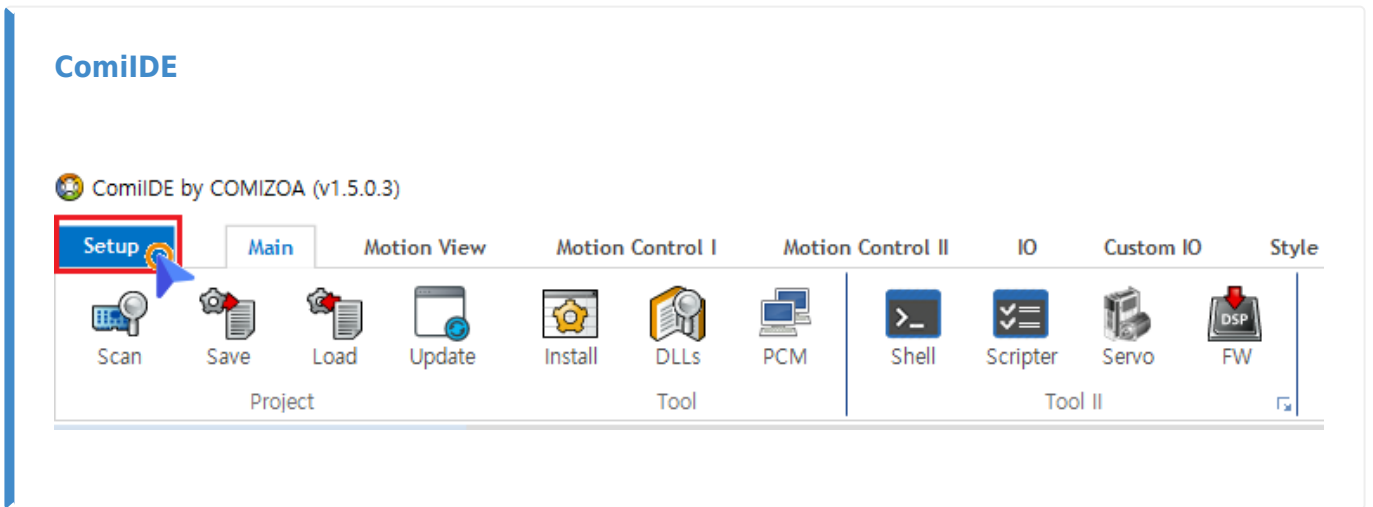
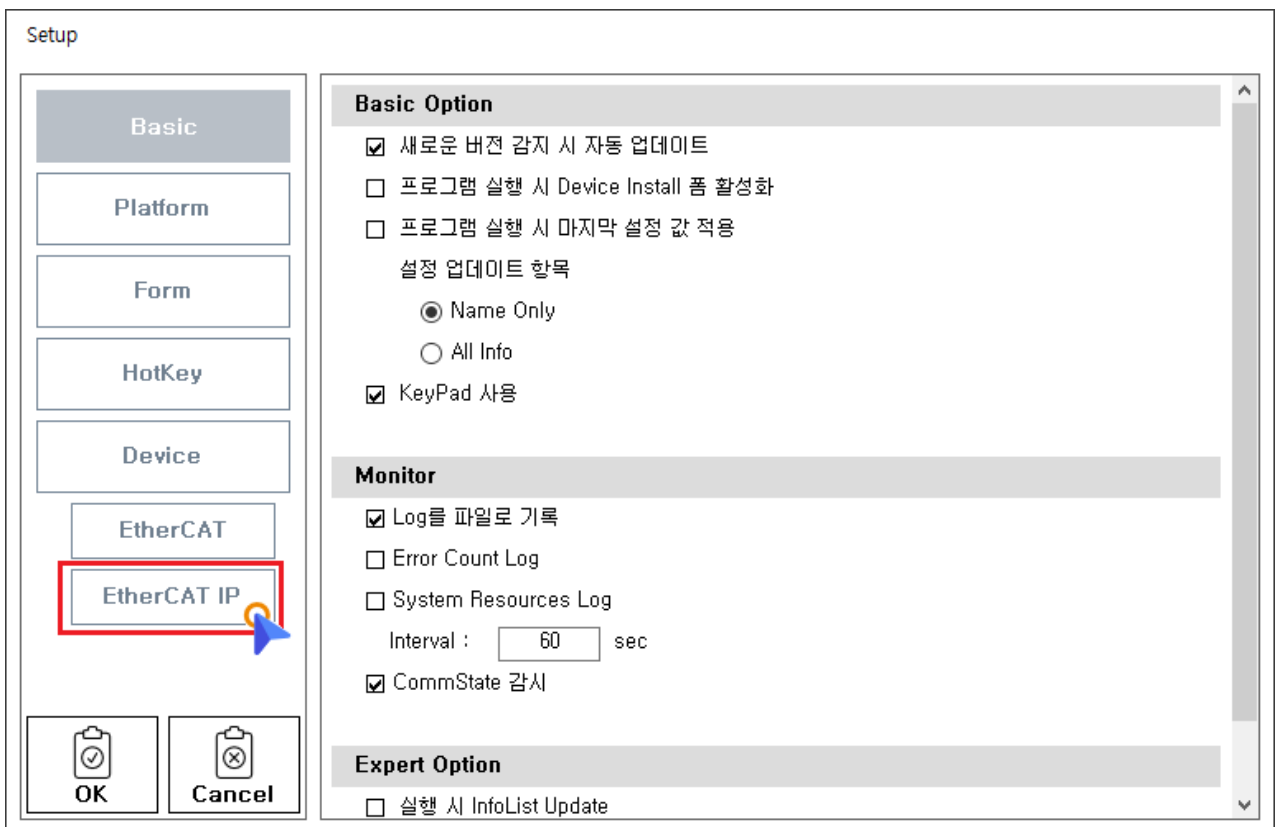


.....	1
ComilDE	1
ini	3

× StandAlone EtherCAT



- ComiIDE , Setup



- EtherCAT IP

Setup

Basic

Platform

Form

HotKey

Device

EtherCAT

EtherCAT IP

OK Cancel

Mode

StandAlone EtherCAT 사용

Simulation Mode 사용

DC Delay 4000

Control Message Setup

Local IP 192,168,1,49

Daemon IP 192,168,1,49

Daemon Port L 55000

Daemon Port M 5000

RX TimeOut L 3000

RX TimeOut M 2000

Comm Retry Count 0

IO Message Setup

Master IP 192,168,1,100

InPort 35040

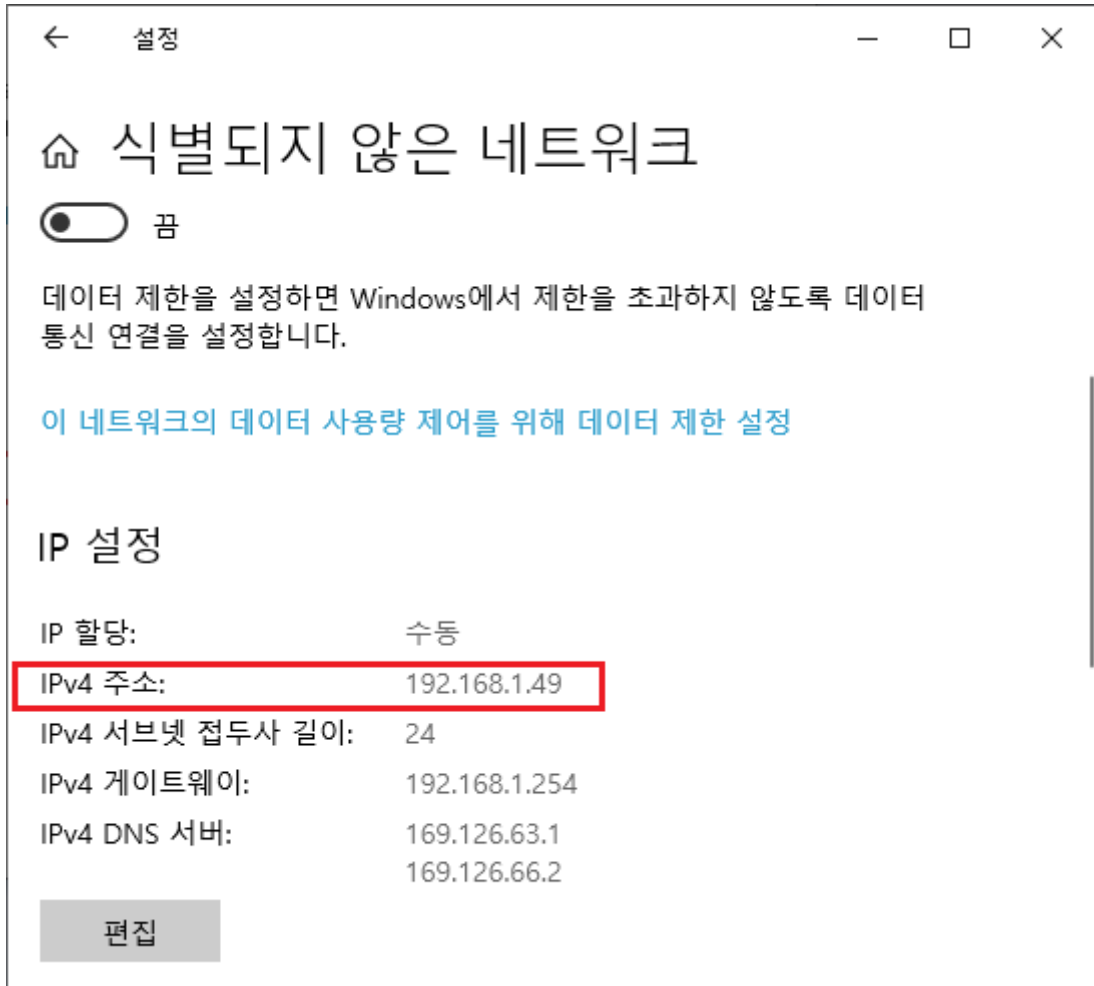
OutPort 35041

• StandAlone EtherCAT

- , PCI Type EtherCAT Master .

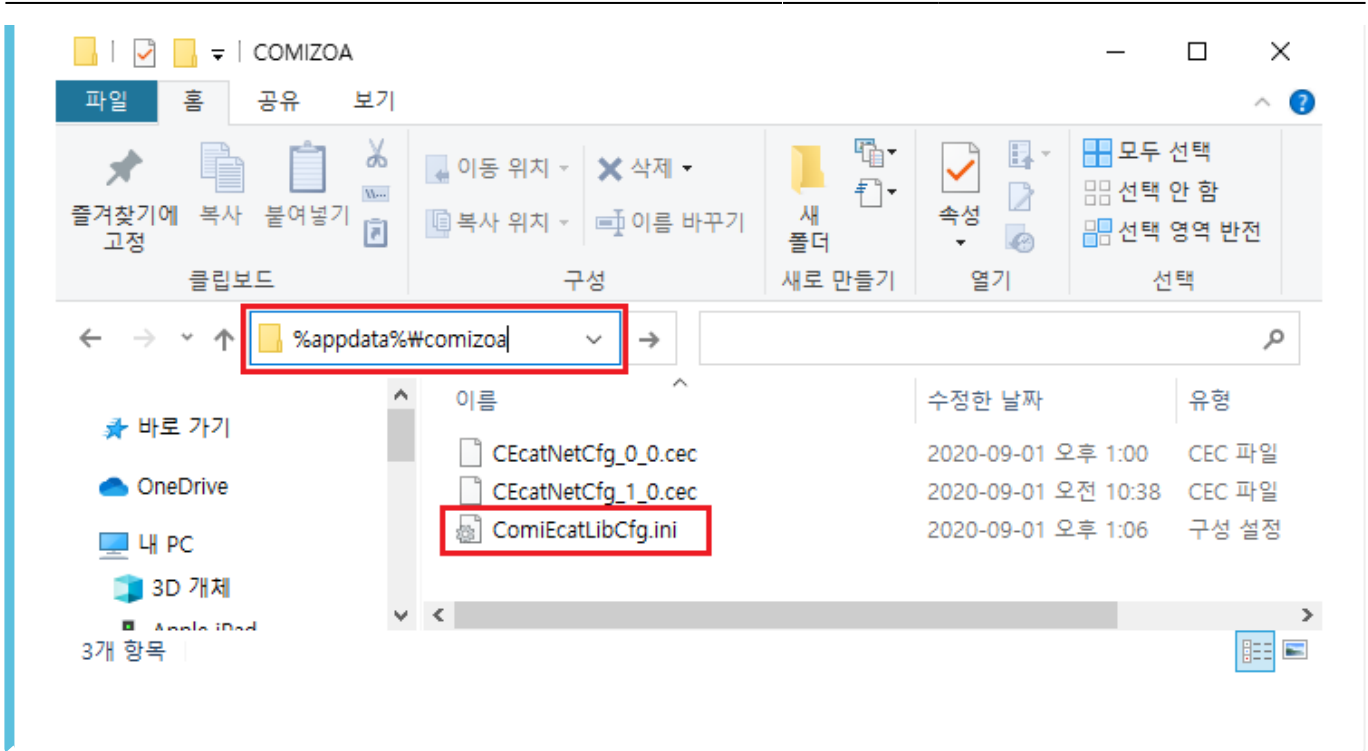
• Local IP, Daemon IP

- Local IP Daemon IP PC IP .



- Master IP
 - Master IP StandAlone EtherCAT Master IP
 - 192.168.1.100

ini



- ..\AppData\Roaming\COMIZOA\ComiEcatLibCfg.ini
 - %appdata%\comizoa

```
1
2 [DEBUG LOGGING]
3   LogType=3
4   LogLevel=2
5   LogFilePath=D:\10_Project\ComiIDE\ComiIDE\bin\Debug\Logs\log_200827_160
6   ErrLogType=0
7   Exclude=
8   Include=
9 [MEMORY LOG OPTIONS]
10  MemorySize (KB)=400000
11
12 [LIB_TUNES]
13  DC Setup Delay=4000
14  EmbeddedMode=1
15  SimulationMode=0
16
17 [CONTROL MSG COMM]
18  LOCAL_IP =192.168.1.49
19  DAEMON_IP =192.168.1.49
20  DAEMON_PORT_L =55000
21  DAEMON_PORT_M =5000
22  RX_TIMEOUT_L =3000
23  RX_TIMEOUT_M =2000
24  COMM_RETRY_NUM =0
25
26 [LIO_MSG_COMM]
27  MASTER_IP =192.168.1.100
28  IN_PORT =35040
29  OUT_PORT =35041
30
```

- 'EmbeddedMode' 1 .
- 'Local_IP', 'Daemon_IP' PC IP .
- 'Master_IP' , 'Master_IP' .

From:

<http://comizoa.com/info/> - -

Permanent link:

http://comizoa.com/info/doku.php?id=platform:ethercat:1_setup:20_ip:10_begin&rev=1598958357

Last update: **2024/07/08 18:22**