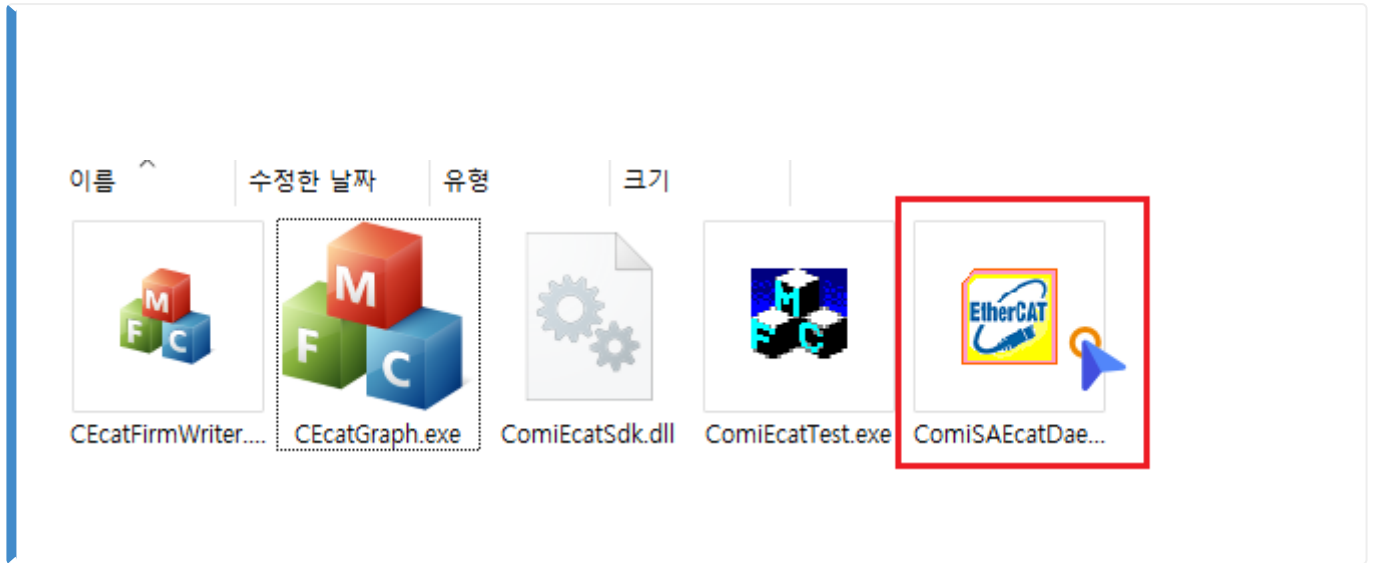


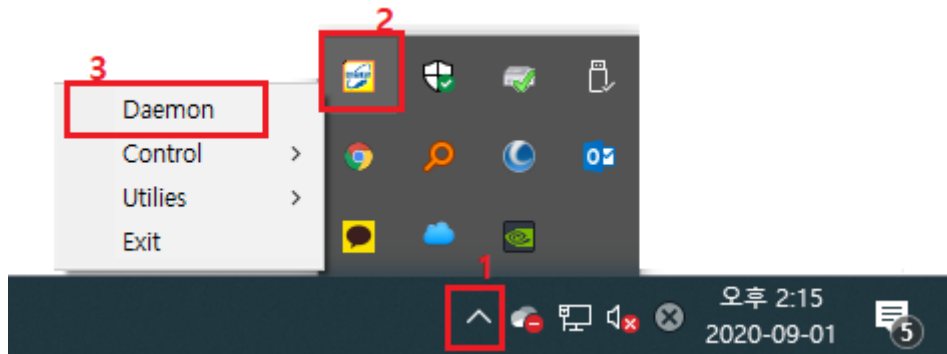
Daemon ..... 1  
..... 1  
Daemon ..... 2  
Slave Info. .... 3  
Network Config. .... 4

# Daemon

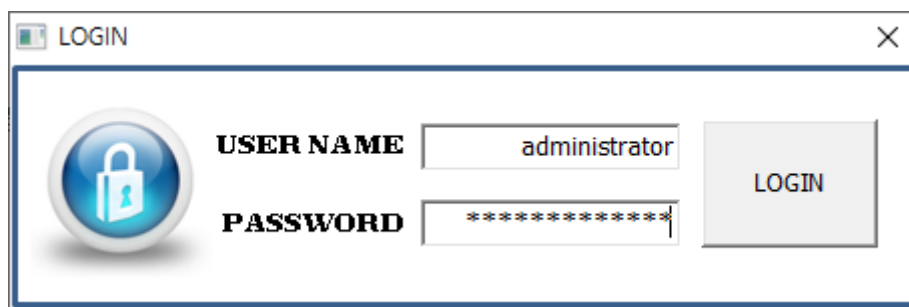
× Daemon



- **ComiSAEcatDaemon.exe**

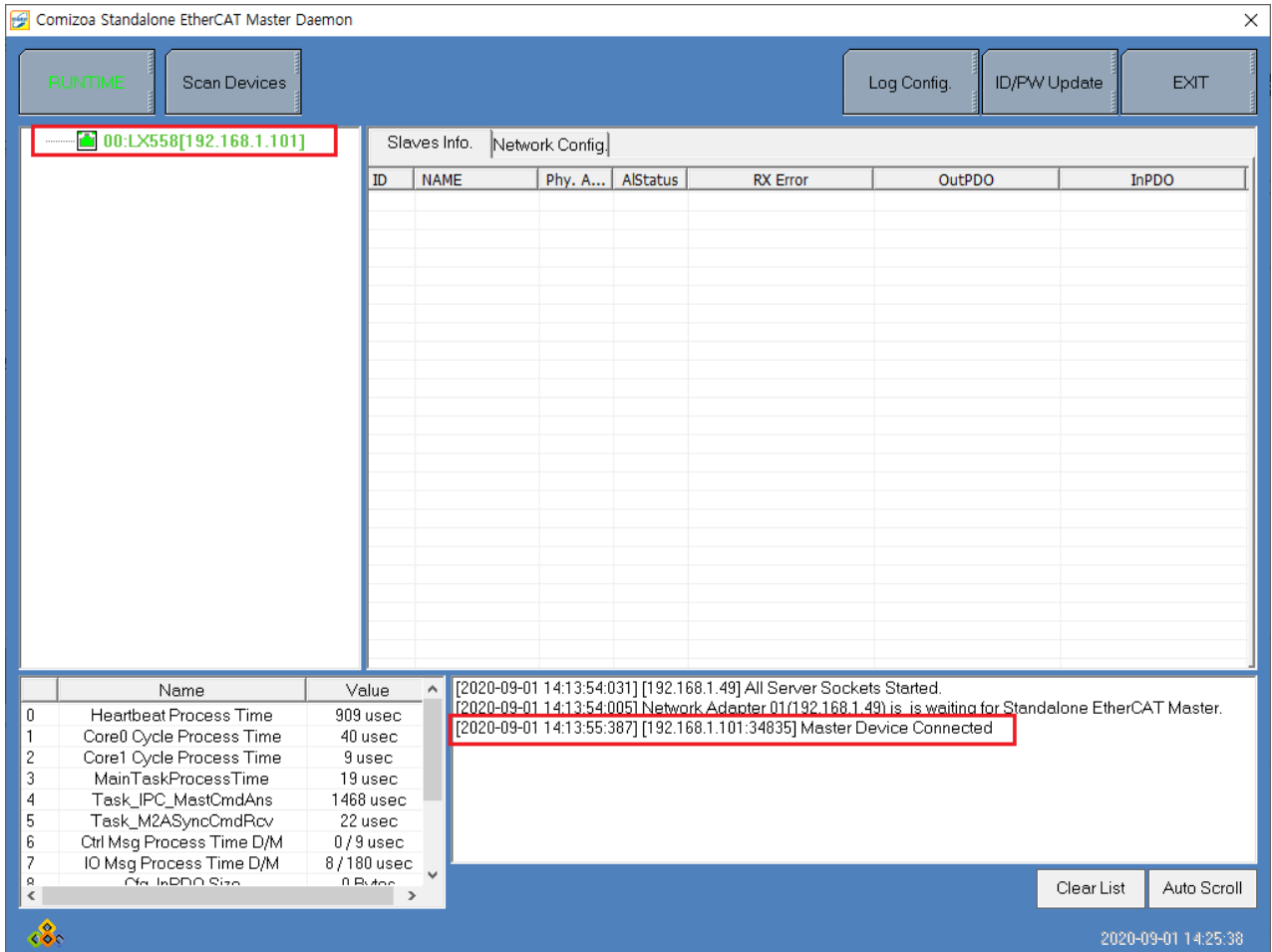


- Tray
- Tray **Daemon**



- ID Password 'administrator' .

### Daemon

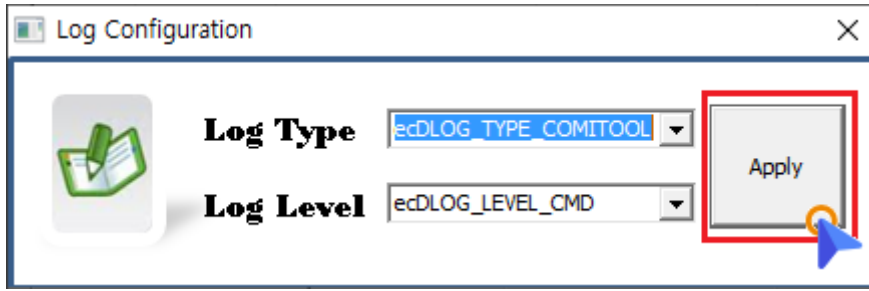


- 가 , Device List Master .

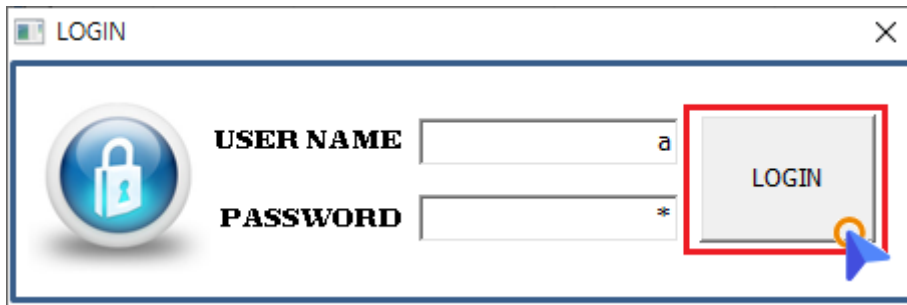


- **RUNTIME** : 'Simulation Mode' .  
 ◦ , 'Simulation Mode' 'RunTime Mode' .
- **Scan Device** : StandAlone EtherCAT Master .

- **Log Config** : Library Logging 가
- ComilDE **DLL Logger**



- **IP/PW Update** : ID Password , Login
- ID Password , Login



- **EXIT** : Daemon

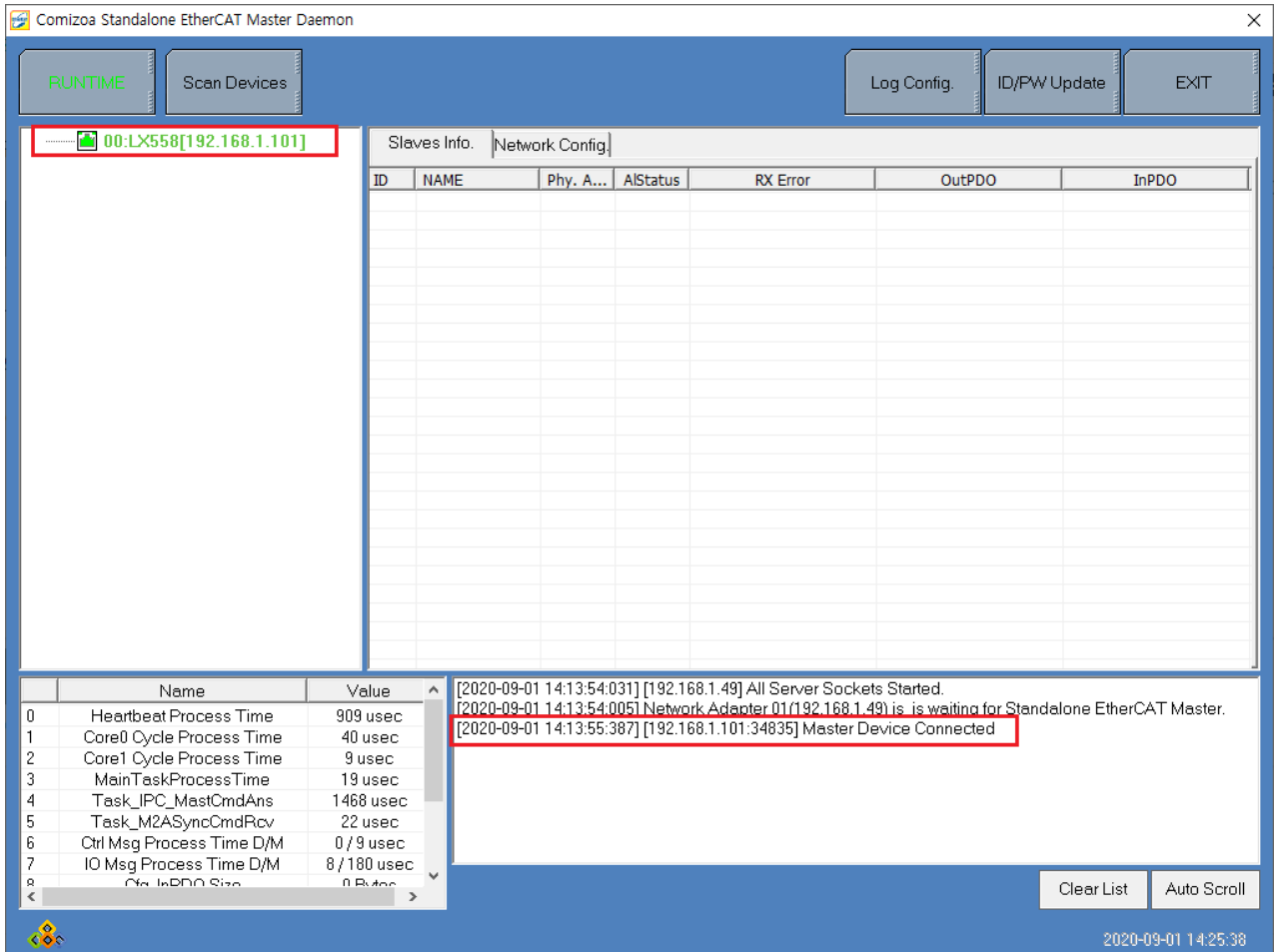
### Slave Info.

ID	NAME	Phy. A...	AIStatus	RX Error	OutPDO	InPDO
1	0x5132aa00	0x200	0x8	0x0		
2	0x5032da11	0x204	0x8	0x0	00	00 04

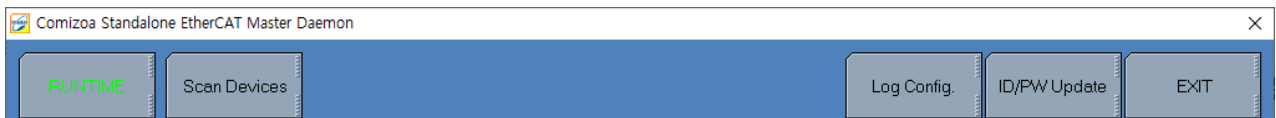
- Master
- Slave **Configurator**

### Network Config.

### DeviceID / DeviceIP



### • Network Config. Set Device Address



- **New(To) Device Config.** 'Device ID' 'Master Device IP' , **Write Device Info**
  - Device ID Device IP가 , Master

### Description

- **Start Library Server :**
- **Stop Library Server :**

- **Start Master Server :**
- **Stop Library Server :**

From:

<http://comizoa.com/info/> - -

Permanent link:

[http://comizoa.com/info/doku.php?id=platform:ethercat:1\\_setup:20\\_ip:20\\_daemon&rev=1598941659](http://comizoa.com/info/doku.php?id=platform:ethercat:1_setup:20_ip:20_daemon&rev=1598941659)

Last update: **2024/07/08 18:22**