

- Case 1 ..... 1
  - AddInfo ..... 1
  - Cause ..... 1
  - Solution ..... 1
  - Config Info ..... 2
- Case 2 ..... 2
  - AddInfo ..... 2
  - Cause ..... 2
  - Solution ..... 3
- Case 3 ..... 3
  - AddInfo ..... 3
  - Cause ..... 3
  - Solution ..... 3
- Case 4 ..... 3
  - AddInfo ..... 3
  - Cause ..... 3
  - Solution ..... 4

, , torque, , ,

x 가

### Case 1

#### AddInfo

(Cyclic Torque Mode)

Target Torque

가

가

.

#### Cause

- OutPDO Data Torque

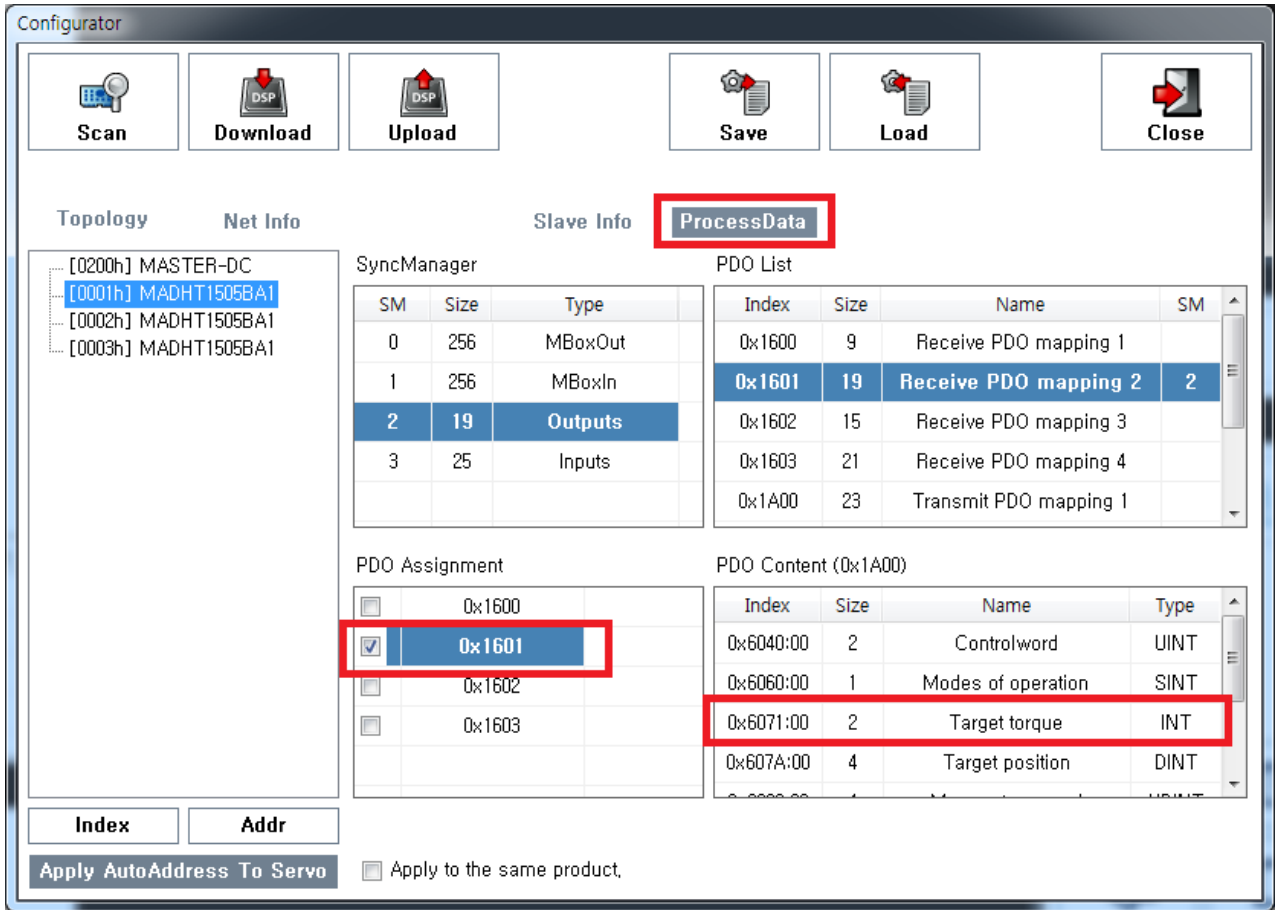
- 

1)

#### Solution

- OutPDO Data Torque
  - Torque

가 Configuration  
OutPDO Map



- Config

### Configuration Guide

- XML

. (OMRON xml )

- Torque Monitor가

### Torque Monitor Failed

×  
Config Info



## Case 2

### AddInfo

- 

### Cause

- SDO 0x6080 (Max motor speed) 0

2)

**Solution**

- SDO 0x6080 (Max motor speed)
- rpm

**Case 3**

**AddInfo**

- 

**Cause**

- Pr0.00 0
  - 
  - , 0x607E
- (Polarity)<sup>3)</sup>

**Solution**

- Pr0.00 0

**Case 4**

**AddInfo**

- 

**Cause**

- Pr0.08 0
- **PANASONIC :**

### Solution

- Pr0.08      0

1)

OutPDO Data

2)

Omron                      0x607F (Max Profile Speed)

3)

No Reverse : 0 / Reverse : 224

From:

<http://comizoa.com/info/> - -

Permanent link:

[http://comizoa.com/info/doku.php?id=platform:ethercat:70\\_users\\_guide:20\\_ts:torque\\_failed&rev=1544503562](http://comizoa.com/info/doku.php?id=platform:ethercat:70_users_guide:20_ts:torque_failed&rev=1544503562)

Last update: **2024/07/08 18:22**