

- 0. ETS-AI08H-E Range Mode Setting** ..... 1
- 1. ComilDE Dictionary** ..... 1
  - 1. ComilDE Dictionary ..... 1
  - 2. .... 2
  - 3. Range ..... 2
- 2. SDO Write** ..... 4
  - 1. Slave ..... 4
  - 2. .... 4
  - 3. SDO Write Range Mode ..... 5

# ETS-AI08H-E Range Mode

× ETS-AI08H-E Range Mode

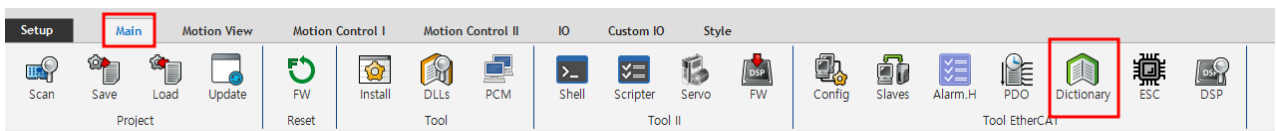
## 0. ETS-AI08H-E Range Mode Setting

▶ Analog Input Channel Setting (n = 0~7 : 채널 번호)

Index	Sub	Name	Value	Data Type	Flag	
0x80n0	0x00	AI Setting Ch. n	0x0B	UINT8	RO	
	0x01	Enable Limit 1	Limit 1 사용 여부	BOOL	RW	
	0x02	Enable Limit 2	Limit 2 사용 여부	BOOL	RW	
	0x03	Analog Type	0	Voltage Type	BOOL	RW
			1	Current Type		
	0x09	Range Mode	0	-10.24 ~ 10.24 (V)	BIT5	RW
			1	-5.12 ~ 5.12 (V)		
			2	-2.56 ~ 2.56 (V)		
			3	0 ~ 10.24 (V)		
			4	0 ~ 5.12 (V)		
			5	4 ~ 20 (mA)		
6			0 ~ 20 (mA)			
7			0 ~ 24 (mA)			
0x0A	Limit1 Value	Limit 1 값	INT32	RW		
0x0B	Limit2 Value	Limit 2 값	INT32	RW		

## 1. ComiIDE Dictionary

### 1. ComiIDE Dictionary



- Main - Dictionary

2.

Object Dictionary

02 : [0202] AES-CBC-AIO ✎ Update Interval 1000 Config

- EtherCAT
  - Net 0
    - 00 : [02FF] MASTER-DC
    - 01 : [0201] AES-CBC-DIO
    - 02 : [0202] AES-CBC-AIO**

Index	Name	Type	Size	Value	Value_Hex	Flag
0x1000	Device type	UDINT	4	791433	0xC1389	
0x1008	Device name	STRING(10)	10	AES-CBC-AI		
0x1009	Hardware version	STRING(4)	4	v1.0		
0x100A	Software version	STRING(8)	8	v1.0.0.0		
0x1018	Identity	DT1018	18			
0x1600	AO RxPDO-Map	DT1600	50			
0x1A00	AI TxPDO-Map00	DT1A00	38			
0x1A01	AI TxPDO-Map01	DT1A00	38			
0x1A02	AI TxPDO-Map02	DT1A00	38			
0x1A03	AI TxPDO-Map03	DT1A00	38			
0x1A04	AI TxPDO-Map04	DT1A00	38			
0x1A05	AI TxPDO-Map05	DT1A00	38			
0x1A06	AI TxPDO-Map06	DT1A00	38			
0x1A07	AI TxPDO-Map07	DT1A00	38			
0x1A08	AI TxPDO-Map08	DT1A00	38			
0x1A09	AI TxPDO-Map09	DT1A00	38			
0x1A0A	AI TxPDO-Map10	DT1A00	38			
0x1A0B	AI TxPDO-Map11	DT1A00	38			
0x1A20	AI(SOL) TxPDO-Map00	DT1A00	38			
0x1A21	AI(SOL) TxPDO-Map01	DT1A00	38			
0x1A22	AI(SOL) TxPDO-Map02	DT1A00	38			
0x1A23	AI(SOL) TxPDO-Map03	DT1A00	38			

Index Order ID Order

• ( ETS-AI08H-E )

3. Range

Object Dictionary

02 : [0202] AES-CBC-AIO ✎ Update Interval 1000 Config


- EtherCAT
  - Net 0
    - 00 : [02FF] MASTER-DC
    - 01 : [0201] AES-CBC-DIO
    - 02 : [0202] AES-CBC-AIO

Index	Name	Type	Size	Value	Value_Hex	Flag
0x7210	Analog(SOL) Output Channel 1	DT7000	4			
0x7220	Analog(SOL) Output Channel 2	DT7000	4			
0x7230	Analog(SOL) Output Channel 3	DT7000	4			
0x7240	Analog(SOL) Output Channel 4	DT7000	4			
0x7250	Analog(SOL) Output Channel 5	DT7000	4			
0x7260	Analog(SOL) Output Channel 6	DT7000	4			
0x7270	Analog(SOL) Output Channel 7	DT7000	4			
0x8000	Analog Input Setting Ch.0	DT8000	24			
0x0	SubIndex 000	USINT	1	11	0xB	
0x1	Enable Limit1	BOOL	0	0	0x0	
0x2	Enable Limit2	BOOL	0	0	0x0	
0x9	Range Mode	DT8001EN	1	0	0x0	
0xA	Limit1 Value	DINT	4	0	0x0	
0xB	Limit2 Value	DINT	4	0	0x0	
0x8010	Analog Input Setting Ch.1	DT8000	24			
0x8020	Analog Input Setting Ch.2	DT8000	24			
0x8030	Analog Input Setting Ch.3	DT8000	24			
0x8040	Analog Input Setting Ch.4	DT8000	24			
0x8050	Analog Input Setting Ch.5	DT8000	24			
0x8060	Analog Input Setting Ch.6	DT8000	24			
0x8070	Analog Input Setting Ch.7	DT8000	24			
0x8080	Analog Input Setting Ch.8	DT8000	24			

Index Order ID Order

• 0x80n0 Analog Input Channel Setting ( n )

Object Dictionary

02 : [0202] AES-CBC-AIO 

Update Interval  **Config**


EtherCAT

- Net 0
  - 00 : [02FF] MASTER-DC
  - 01 : [0201] AES-CBC-DIO
  - 02 : [0202] AES-CBC-AIO

Index	Name	Type	Size	Value	Value_Hex	Flag
0x7210	Analog(SOL) Output Channel 1	DT7000	4			
0x7220	Analog(SOL) Output Channel 2	DT7000	4			
0x7230	Analog(SOL) Output Channel 3	DT7000	4			
0x7240	Analog(SOL) Output Channel 4	DT7000	4			
0x7250	Analog(SOL) Output Channel 5	DT7000	4			
0x7260	Analog(SOL) Output Channel 6	DT7000	4			
0x7270	Analog(SOL) Output Channel 7	DT7000	4			
0x8000	Analog Input Setting Ch.0	DT8000	24			
0x0	SubIndex 000	USINT	1	11	0xB	
0x1	Enable Limit1	BOOL	0	0	0x0	
0x2	Enable Limit2	BOOL	0	0	0x0	
0x9	Range Mode	DT8001EN	1	0	0x0	
0xA	Limit1 Value	DINT	4	0	0x0	
0xB	Limit2 Value	DINT	4	0	0x0	
0x8010	Analog Input Setting Ch.1	DT8000	24			
0x8020	Analog Input Setting Ch.2	DT8000	24			
0x8030	Analog Input Setting Ch.3	DT8000	24			
0x8040	Analog Input Setting Ch.4	DT8000	24			
0x8050	Analog Input Setting Ch.5	DT8000	24			
0x8060	Analog Input Setting Ch.6	DT8000	24			
0x8070	Analog Input Setting Ch.7	DT8000	24			
0x8080	Analog Input Setting Ch.8	DT8000	24			

- Value

Object Dictionary

02 : [0202] AES-CBC-AIO 

Update Interval  **Config**


EtherCAT

- Net 0
  - 00 : [02FF] MASTER-DC
  - 01 : [0201] AES-CBC-DIO
  - 02 : [0202] AES-CBC-AIO

Index	Name	Type	Size	Value	Value_Hex	Flag
0x7210	Analog(SOL) Output Channel 1	DT7000	4			
0x7220	Analog(SOL) Output Channel 2	DT7000	4			
0x7230	Analog(SOL) Output Channel 3	DT7000	4			
0x7240	Analog(SOL) Output Channel 4	DT7000	4			
0x7250	Analog(SOL) Output Channel 5	DT7000	4			
0x7260	Analog(SOL) Output Channel 6	DT7000	4			
0x7270	Analog(SOL) Output Channel 7	DT7000	4			
0x8000	Analog Input Setting Ch.0	DT8000	24			
0x0	SubIndex 000	USINT	1	11	0xB	
0x1	Enable Limit1	BOOL	0	0	0x0	
0x2	Enable Limit2	BOOL	0	0	0x0	
0x9	Range Mode	DT8001EN	1	6	0x0	
0xA	Limit1 Value	DINT	4	0	0x0	
0xB	Limit2 Value	DINT	4	0	0x0	
0x8010	Analog Input Setting Ch.1	DT8000	24			
0x8020	Analog Input Setting Ch.2	DT8000	24			
0x8030	Analog Input Setting Ch.3	DT8000	24			
0x8040	Analog Input Setting Ch.4	DT8000	24			
0x8050	Analog Input Setting Ch.5	DT8000	24			
0x8060	Analog Input Setting Ch.6	DT8000	24			
0x8070	Analog Input Setting Ch.7	DT8000	24			
0x8080	Analog Input Setting Ch.8	DT8000	24			

- Enter

Object Dictionary

02 : [0202] AES-CBC-AIO 

Update Interval  **Config**

EtherCAT

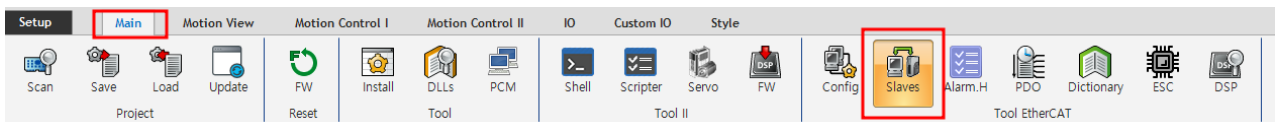
- Net 0
  - 00 : [02FF] MASTER-DC
  - 01 : [0201] AES-CBC-DIO
  - 02 : [0202] AES-CBC-AIO

Index	Name	Type	Size	Value	Value_Hex	Flag
0x7210	Analog(SOL) Output Channel 1	DT7000	4			
0x7220	Analog(SOL) Output Channel 2	DT7000	4			
0x7230	Analog(SOL) Output Channel 3	DT7000	4			
0x7240	Analog(SOL) Output Channel 4	DT7000	4			
0x7250	Analog(SOL) Output Channel 5	DT7000	4			
0x7260	Analog(SOL) Output Channel 6	DT7000	4			
0x7270	Analog(SOL) Output Channel 7	DT7000	4			
0x8000	Analog Input Setting Ch.0	DT8000	24			
0x0	SubIndex 000	USINT	1	11	0xB	
0x1	Enable Limit1	BOOL	0	0	0x0	
0x2	Enable Limit2	BOOL	0	0	0x0	
0x9	Range Mode	DT8001EN	1	6	0x6	
0xA	Limit1 Value	DINT	4	0	0x0	
0xB	Limit2 Value	DINT	4	0	0x0	
0x8010	Analog Input Setting Ch.1	DT8000	24			
0x8020	Analog Input Setting Ch.2	DT8000	24			
0x8030	Analog Input Setting Ch.3	DT8000	24			
0x8040	Analog Input Setting Ch.4	DT8000	24			
0x8050	Analog Input Setting Ch.5	DT8000	24			
0x8060	Analog Input Setting Ch.6	DT8000	24			
0x8070	Analog Input Setting Ch.7	DT8000	24			
0x8080	Analog Input Setting Ch.8	DT8000	24			

- Range mode

## 2. SDO Write

### 1. Slave



The screenshot shows a software interface with a top menu bar containing 'Setup', 'Main', 'Motion View', 'Motion Control I', 'Motion Control II', 'IO', 'Custom IO', and 'Style'. Below the menu bar is a toolbar with various icons. The 'Main' tab is highlighted with a red box. In the toolbar, the 'Slaves' icon, which depicts two server racks, is also highlighted with a red box.

- Main - Slave

### 2.

Slave RW

02 : [0202] AES-CBC-AIO

- EtherCAT
  - Net 0
    - 00 : [02FF] MASTER-DC
    - 01 : [0201] AES-CBC-DIO
    - 02 : [0202] AES-CBC-AIO

EEPROM CoE SDO Register Update

Address:

Size:

Value:

Decimal: 0

Buttons: RenewCRC, Read, Write

- 

### 3. SDO Write Range Mode

Slave RW

02 : [0202] AES-CBC-AIO

- EtherCAT
  - Net 0
    - 00 : [02FF] MASTER-DC
    - 01 : [0201] AES-CBC-DIO
    - 02 : [0202] AES-CBC-AIO

EEPROM CoE SDO Register Update

Index:

Sub Index:

Size:

Value:

Decimal: 0

Buttons: Read, Write

- CoE SDO

Slave RW

02 : [0202] AES-CBC-AIO

EtherCAT  
Net 0  
00 : [02FF] MASTER-DC  
01 : [0201] AES-CBC-DIO  
02 : [0202] AES-CBC-AIO

EEPROM CoE SDO Register Update

Index	0x8000
Sub Index	9
Size	1
Value	6
Decimal	6

Read Write

- Index 0x80n0 (n )
- SubIndex 9 (Range Mode)
- Size 1 (1byte)
- Value RangeMode
- Write

Slave RW

02 : [0202] AES-CBC-AIO

EtherCAT  
Net 0  
00 : [02FF] MASTER-DC  
01 : [0201] AES-CBC-DIO  
02 : [0202] AES-CBC-AIO

EEPROM CoE SDO Register Update

Index	0x8000
Sub Index	9
Size	1
Value	0x6
Decimal	6

Read Write

- Read

From:

<http://comizoa.com/info/> - -

Permanent link:

[http://comizoa.com/info/doku.php?id=tempmanuals:00\\_ets\\_ai08\\_rangemode\\_change&rev=1660123074](http://comizoa.com/info/doku.php?id=tempmanuals:00_ets_ai08_rangemode_change&rev=1660123074)

Last update: **2024/07/08 18:22**